



Chipsmall Limited consists of a professional team with an average of over 10 year of expertise in the distribution of electronic components. Based in Hongkong, we have already established firm and mutual-benefit business relationships with customers from,Europe,America and south Asia,supplying obsolete and hard-to-find components to meet their specific needs.

With the principle of “Quality Parts,Customers Priority,Honest Operation,and Considerate Service”,our business mainly focus on the distribution of electronic components. Line cards we deal with include Microchip,ALPS,ROHM,Xilinx,Pulse,ON,Everlight and Freescale. Main products comprise IC,Modules,Potentiometer,IC Socket,Relay,Connector.Our parts cover such applications as commercial,industrial, and automotives areas.

We are looking forward to setting up business relationship with you and hope to provide you with the best service and solution. Let us make a better world for our industry!



Contact us

Tel: +86-755-8981 8866 Fax: +86-755-8427 6832

Email & Skype: info@chipsmall.com Web: www.chipsmall.com

Address: A1208, Overseas Decoration Building, #122 Zhenhua RD., Futian, Shenzhen, China

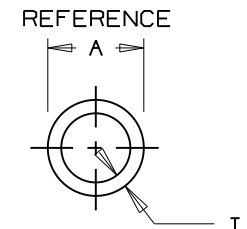
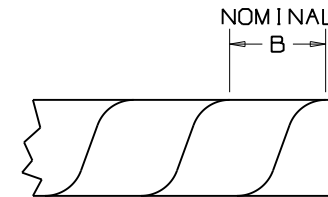


THIS COPY IS PROVIDED ON A RESTRICTED BASIS AND IS NOT TO BE USED IN ANY WAY DETRIMENTAL TO THE INTERESTS OF PANDUIT CORP.

* PANDUIT PART NUMBER	NOMINAL A IN (mm)	\triangle B IN (mm)	T IN (mm)	WEIGHT LBS / 100 FT (g)
T12FR	.125 (3.2)	.218±.047 (5.5±1.2)	.030±.006 (0.8±0.2)	0.4 (181.4)
T19FR	.188 (4.8)	.250±.047 (6.4±1.2)	.032±.008 (0.8±0.2)	0.9 (420.1)
T25FR	.250 (6.4)	.375±.047 (9.5±1.2)	.040±.008 (1.0±0.2)	1.1 (499.0)
T38FR	.375 (9.5)	.437±.047 (11.1±1.2)	.055±.010 (1.4±0.3)	2.4 (1088.6)
T50FR	.500 (12.7)	.500±.047 (12.7±1.2)	.060±.016 (1.5±0.4)	3.6 (1633.0)
T62FR	.625 (15.9)	.625±.047 (15.9±1.2)	.062±.020 (1.6±0.5)	4.7 (2131.9)
T75FR	.750 (19.1)	.875±.047 (22.2±1.2)	.065±.020 (1.7±0.5)	6.0 (2721.6)
T100FR	1.000 (25.4)	1.125±.047 (28.6±1.2)	.070±.020 (1.8±0.5)	8.8 (3991.7)

NOTES:

- * 1. SEE CURRENT PRICE SHEET FOR PART NUMBER SUFFIX DESIGNATIONS, PACKAGE SIZE AND PART COLOR
- Ⓐ 2. FOR ROLL SIZES LARGER THAN 10 FT., SPLICING MAY OCCUR.
- 3. PART NUMBERS DESIGNATE WITH THE LETTER 'Y' AT THE END ARE MANUFACTURED FROM A RoHS COMPLIANT MATERIAL.
PART NUMBER EXAMPLE:
T50FR-CY
- Ⓑ 4. REVERSE CUT



DIMENSIONS IN BRACKETS ARE METRIC [mm]	
CAD FILENAME/LAYERS G03597BK_DC_GB0239BF/00D	
TINLEY PARK, ILLINOIS	
NATURAL V-O FLAME RETARDANT SPIRAL WRAP	
UNLESS OTHERWISE SPECIFIED, DIMENSIONAL TOLERANCES ARE: (.X) ± ---- (.XXX) ± ---- (.XX) ± ---- ANGLES ± ----	UNLESS OTHERWISE SPECIFIED, ALL DIMENSIONS ARE GIVEN IN INCHES, THIRD ANGLE PROJECTION.
DRAWN BY JAD DATE 053008 CHK'D JVL	MAT'L: POLYETHYLENE FLAME RETARDANT
SCALE N/A	DWG A
DRAWING NO. GB0239BF	DWG SIZE

REV	DATE	BY	CHK	DESCRIPTION	ECN	R	CUST	SUP
OOD	12/22/11	LEF	VJS	D ADD NOMINAL TO THE "A" DIMENSION C BLANK OUT TOLERANCES IN TITLE BLOCK	GB0239BF	OOD	RAMI	
OOC	5/10/11	LEF	VJS	A REMOVED PHONE NUMBER FROM NOTE 2 B ADDED REVERSE CUT	GB0239BF	OOC	RAMI	
OOB	1-18-10	TMSA		REVISED 'T' WALL THICKNESS & WEIGHT	GB0239BF	OOB		