



Chipsmall Limited consists of a professional team with an average of over 10 year of expertise in the distribution of electronic components. Based in Hongkong, we have already established firm and mutual-benefit business relationships with customers from,Europe,America and south Asia,supplying obsolete and hard-to-find components to meet their specific needs.

With the principle of “Quality Parts,Customers Priority,Honest Operation,and Considerate Service”,our business mainly focus on the distribution of electronic components. Line cards we deal with include Microchip,ALPS,ROHM,Xilinx,Pulse,ON,Everlight and Freescale. Main products comprise IC,Modules,Potentiometer,IC Socket,Relay,Connector.Our parts cover such applications as commercial,industrial, and automotives areas.

We are looking forward to setting up business relationship with you and hope to provide you with the best service and solution. Let us make a better world for our industry!



Contact us

Tel: +86-755-8981 8866 Fax: +86-755-8427 6832

Email & Skype: info@chipsmall.com Web: www.chipsmall.com

Address: A1208, Overseas Decoration Building, #122 Zhenhua RD., Futian, Shenzhen, China



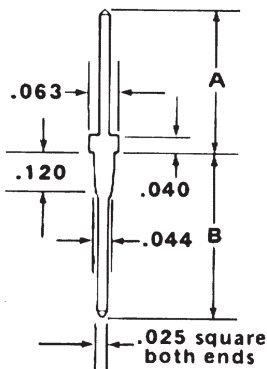
Pins and Terminals



Terminals: Vector Wiring Terminals are useful for breadboarding or prototyping using Vectorbord Plugboards™ and accessories. Individual stamped and/or machine terminals are provided in convenient package quantities. Tools for insertion and staking are also available.

T46 - Press-In Terminals for 0.042" diameter holes

- Single and double-tailed (accessible from both sides) wire-wrap terminals
- 0.025" square posts
- Provides secure contact without soldering or staking
- Rectangular base with stepped shank presses into plain or plated-through holes and is retained without etching or soldering
- Pointed ends slide neatly into all wrapping bits
- 260 Cartridge Brass



Part No.	A	B
T46-2-9	.36"	.42"
T46-3-9	.46"	.60"
T46-4-9	.04"	.42"
T46-5-9	.28"	.60"

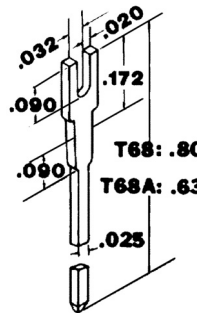
P133A Insertion Tool



T44, T68 Bifurcated Miniwrap Terminals for 0.042" holes

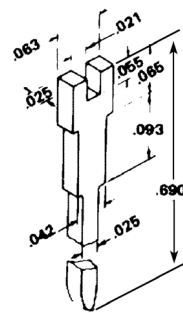


- Wire-Wrap tail with two-pronged receptacle for wires or leads
- 0.025" square posts
- Rectangular terminal with stepped shank presses securely into plated or unplated holes, requires no staking or soldering
- Bifurcated end holds soldered leads securely
- T44: maximum 0.021" diameter leads or 24 gage wires
- T68: maximum 0.032" diameter leads or 20 gage wires
- 260 Cartridge Brass



T68
T68A

Insertion Tool: A13-1



T44

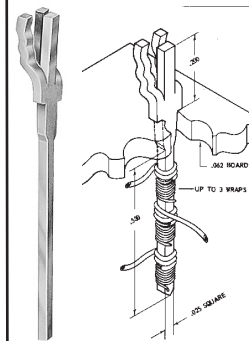
Insertion Tool: A13



A13

T49 - Trifurcated Klipwrap Terminals for 0.042" diameter holes

- Wire-wrap tail with three-pronged receptacle for wires or leads
- 0.025" square posts
- Wires or leads are crimped into receptacle on component side, secured for soldering
- Holds 0.018" - 0.025" diameter leads or 22 gage wires in lower slot, 0.032" - 0.040" diameter leads or 17 gage wires in upper slot
- Overall length - 0.650", 0.215" above 0.062" thick board with 0.373" below the board
- Phosphor Bronze



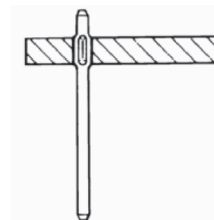
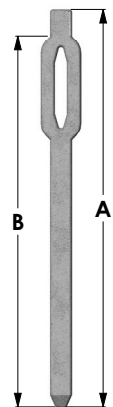
P156



T125, T126 -Wire-Wrap Terminals for .042" diameter holes

- Pressfit wire-wrap terminals, ideal for connecting voltage and ground holes in Vectorbord plus™ and Pads & Planes™ patterns
- 2-level terminals: Part No. T125
- 3-level terminals: Part No. T126
- Phosphor Bronze

Pins & Terminals



Part No.	A	B
T125/C	.560"	.529"
T126/C	.700"	.669"

Packages of 100 each

Terminal: Tin Plate Part No.	Terminal: Gold Plate Part No.	Package Qty	Hand Insertion Tool
T44/C	T44-1/C	100	A13
T44/M	T44-1/M	1000	A13
T46-2-9/M		1000	P133A
T46-3-9/C		100	P133A
T46-3-9/M	T46-3A9/M	1000	P133A
T46-4-9/C		100	P133A
T46-4-9/M	T46-4A9/M	1000	P133A
T46-5-9/C		100	P133A
T46-5-9/M		1000	P133A
T49/C	T49A/C	100	P156
T49/M	T49A/M	1000	P156
T68/C		100	A13-1
T68/M	T68-1/M	1000	A13-1
T68A/M		1000	A13-1



P133A