



Chipsmall Limited consists of a professional team with an average of over 10 year of expertise in the distribution of electronic components. Based in Hongkong, we have already established firm and mutual-benefit business relationships with customers from,Europe,America and south Asia,supplying obsolete and hard-to-find components to meet their specific needs.

With the principle of “Quality Parts,Customers Priority,Honest Operation,and Considerate Service”,our business mainly focus on the distribution of electronic components. Line cards we deal with include Microchip,ALPS,ROHM,Xilinx,Pulse,ON,Everlight and Freescale. Main products comprise IC,Modules,Potentiometer,IC Socket,Relay,Connector.Our parts cover such applications as commercial,industrial, and automotives areas.

We are looking forward to setting up business relationship with you and hope to provide you with the best service and solution. Let us make a better world for our industry!



Contact us

Tel: +86-755-8981 8866 Fax: +86-755-8427 6832

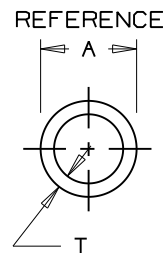
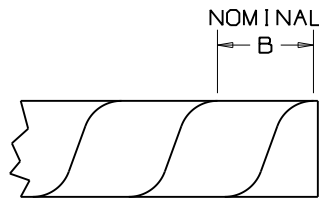
Email & Skype: info@chipsmall.com Web: www.chipsmall.com

Address: A1208, Overseas Decoration Building, #122 Zhenhua RD., Futian, Shenzhen, China



THIS COPY IS PROVIDED ON A RESTRICTED BASIS AND IS NOT TO BE USED IN ANY WAY DETRIMENTAL TO THE INTERESTS OF PANDUIT CORP.

*PANDUIT PART NUMBER	A IN (mm)	B IN (mm)	T IN (mm)	WEIGHT LBS (g) / 100 FT
T12N	.125 (3.2)	.218±.047 (5.5±1.2)	.015±.004 (0.4±0.1)	0.3 (136.1)
T19N	.188 (4.8)	.250±.047 (6.4±1.2)	.020±.008 (0.5±0.2)	0.6 (250.0)
T25N	.250 (6.4)	.375±.047 (9.5±1.2)	.023±.008 (0.6±0.2)	0.8 (362.9)
T38N	.375 (9.5)	.437±.047 (11.1±1.2)	.030±.010 (0.8±0.3)	1.5 (680.4)
T50N	.500 (12.7)	.500±.047 (12.7±1.2)	.032±.012 (0.8±0.3)	2.3 (1043.3)
T62N	.625 (15.9)	.625±.047 (15.9±1.2)	.035±.020 (0.9±0.5)	3.1 (1406.1)
T75N	.750 (19.1)	.875±.047 (22.2±1.2)	.040±.020 (1.0±0.5)	4.2 (1905.1)
T100N	1.000 (25.4)	1.125±.047 (28.6±1.2)	.045±.020 (1.1±0.5)	6.2 (2800.0)



- * Notes:
- 1) See current price sheet for part number suffix designations, package size and part color.
 - 2) For roll sizes larger than 10 ft., splicing may occur.
 - 3) Reverse Cut.

DIMENSIONS IN PARENTHESES ARE IN METRIC UNITS
 CAD FILENAME/LAYERS G03597BG_DC_G00239BN_PB_NYLONWRAP_04/00A

PANDUIT CORP. TINLEY PARK, ILLINOIS

(NATURAL) SPIRAL WRAP

UNLESS OTHERWISE SPECIFIED, DIMENSIONAL TOLERANCES ARE:
 (.X) ± ---- (.XXX) ± ----
 (.XX) ± ---- ANGLES ± ----

UNLESS OTHERWISE SPECIFIED, ALL DIMENSIONS ARE GIVEN IN INCHES, THIRD ANGLE PROJECTION.

REV	DATE	BY	CHK	DESCRIPTION	ECN	R	CUST	SUP
4	5/10/11	LEF	VJS	A REMOVED REF. TO PHONE NUMBERS IN NOTE 2 B ADDED NOTE 3 REVERSE CUT	GB0239BN	4	RAMI	
3	6-24-97	JAD		ADDED NOTE 2	GB0239BN	3		
2	1-20-97	RJK		ADDED T19N TO DRAWING	GB0239BN	2		
1	6-5-96	CJG		REMOVED TOLERANCES FROM DIM. 'A'	GB0239BN	1		
R	5-11-93	SJSU		INITIAL RELEASE	GB0239BN	R		

DRAWN BY SJSU
 DATE 5-11-93
 CHK'D JVL

MAT'L: NYLON 6/6

SCALE NONE
 DRAWING NO. GB0239BN
 DWG SIZE A