



Chipsmall Limited consists of a professional team with an average of over 10 year of expertise in the distribution of electronic components. Based in Hongkong, we have already established firm and mutual-benefit business relationships with customers from,Europe,America and south Asia,supplying obsolete and hard-to-find components to meet their specific needs.

With the principle of “Quality Parts,Customers Priority,Honest Operation,and Considerate Service”,our business mainly focus on the distribution of electronic components. Line cards we deal with include Microchip,ALPS,ROHM,Xilinx,Pulse,ON,Everlight and Freescale. Main products comprise IC,Modules,Potentiometer,IC Socket,Relay,Connector.Our parts cover such applications as commercial,industrial, and automotives areas.

We are looking forward to setting up business relationship with you and hope to provide you with the best service and solution. Let us make a better world for our industry!



Contact us

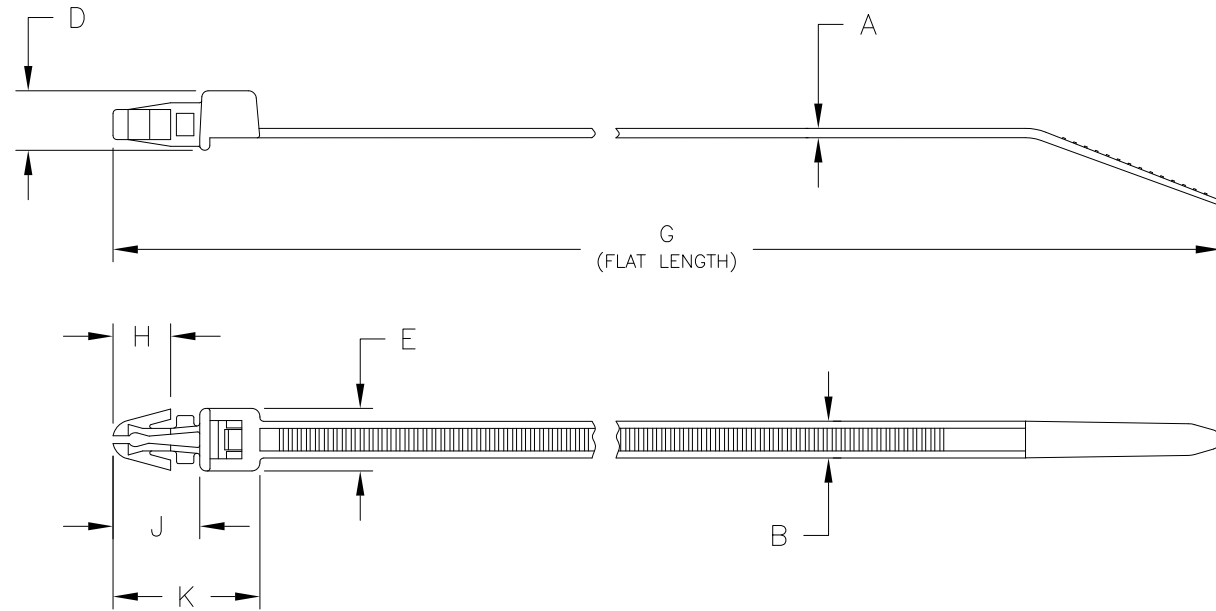
Tel: +86-755-8981 8866 Fax: +86-755-8427 6832

Email & Skype: info@chipsmall.com Web: www.chipsmall.com

Address: A1208, Overseas Decoration Building, #122 Zhenhua RD., Futian, Shenzhen, China



Revision level		Revision Record	Changed	Date	Approved	Date
part	drawing					
—	07					



HOLE DIA: 6.35 TO 7.11
MAX THICKNESS: 3.56

Panel Specifications

SEE CHART
(CONSULT FACTORY FOR
AVAILABLE COLORS)

Material

Dimension tolerances
unless otherwise specified
.XXX =
.XXX =
.XX =
.X = NOTED
∠ =

Dimension Units mm

PERFORMANCE
SPECIFICATION

Type	Cable Range (mm)	Material	A	B	D	E	G	H	J	K	Min Loop Tensile Strength (newtons)
T50RSF	1.6 to 44.5	PA66	1.3 ±0.2	4.7±0.2	7.5 ±0.5	7.8 ±0.5	210.0 ±10.0	7.2 ±0.5	11.2 ±0.5	17.9 ±0.5	225
		PA66HIR									
		PA66HS									
		PA66UV									
		PA66HIRHSUV									

ACAD MECH 2013		Drawn	G.G.G.	02/09/94	Scale	1:1	Computer File Number CT\CST\2050021_07	
		Approved	K.A.C.	12/06/13				Title
ALL PROPRIETARY RIGHTS IN THE SUBJECT MATTER SHOWN ON THIS DRAWING ARE EXCLUSIVE PROPERTY OF HELLERMANNTYTON		HellermannTyton 7930 N. Faulkner Rd. Milwaukee, WI 53224 Ph: (414) 355-1130 Fx: (414) 362-8338			T50RSF PUSH MOUNT TIE			Format
								Drawing-No
					CT2050021CST			Sheet 1 of 1