



Chipsmall Limited consists of a professional team with an average of over 10 year of expertise in the distribution of electronic components. Based in Hongkong, we have already established firm and mutual-benefit business relationships with customers from,Europe,America and south Asia,supplying obsolete and hard-to-find components to meet their specific needs.

With the principle of “Quality Parts,Customers Priority,Honest Operation,and Considerate Service”,our business mainly focus on the distribution of electronic components. Line cards we deal with include Microchip,ALPS,ROHM,Xilinx,Pulse,ON,Everlight and Freescale. Main products comprise IC,Modules,Potentiometer,IC Socket,Relay,Connector.Our parts cover such applications as commercial,industrial, and automotives areas.

We are looking forward to setting up business relationship with you and hope to provide you with the best service and solution. Let us make a better world for our industry!



## Contact us

Tel: +86-755-8981 8866 Fax: +86-755-8427 6832

Email & Skype: info@chipsmall.com Web: www.chipsmall.com

Address: A1208, Overseas Decoration Building, #122 Zhenhua RD., Futian, Shenzhen, China



THIS COPY IS PROVIDED ON A RESTRICTED BASIS AND IS NOT TO BE USED IN ANY WAY DETRIMENTAL TO THE INTERESTS OF PANDUIT CORP.

COVER

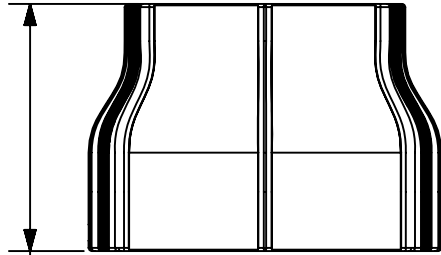
BASE

PANDUIT P/N	WEIGHT
T702EE	1.211 LBS [549.31 g]

△E  
△A

NOTES:

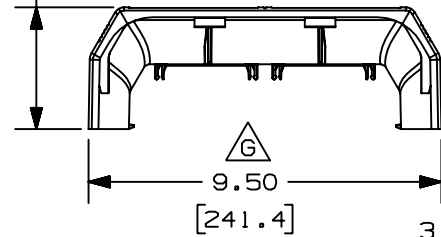
1. SEE CURRENT CATALOG FOR ADDITIONAL PART SUFFIXES TO INDICATE COLOR AND PACKAGE QUANTITY.
2. THIS PART IS INTENDED TO BE USED WITH PANDUIT TWIN 70 RACEWAY.
3. DIMENSIONS IN PARENTHESES ARE IN METRIC.



6.66 △G  
[169.1]

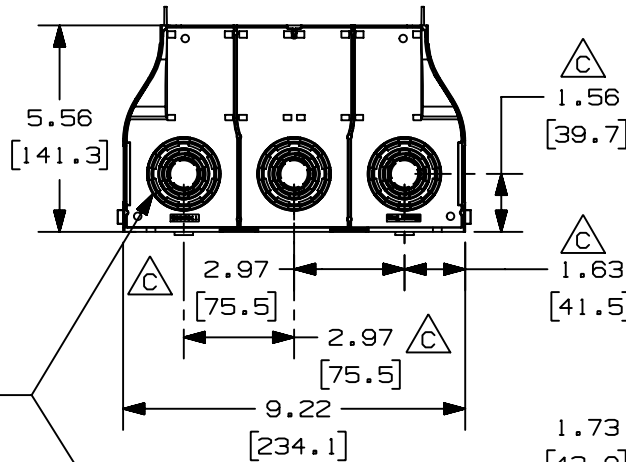
CONCENTRIC BREAKOUTS FOR CONDUIT SIZES: 1/2", 3/4", 1", 1 1/4", 1 1/2"

3.28 △G  
[83.3]



9.50 △G  
[241.4]

3.16  
[80.4]



5.56  
[141.3]

1.56 △C  
[39.7]

△C

2.97  
[75.5]

2.97 △C  
[75.5]

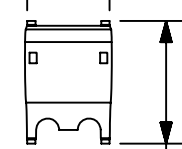
1.63 △C  
[41.5]

9.22  
[234.1]

INSERT △D



1.73  
[43.9]



3 INSERTS △D

2.57  
[65.3]

△C

2.97  
[75.5]

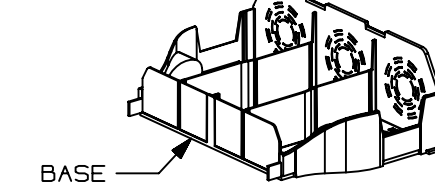
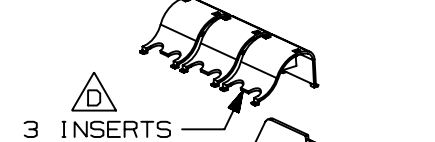
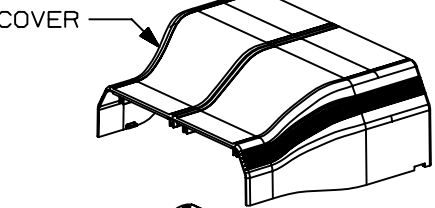
1.56 △C  
[39.7]

△C

2.97  
[75.5]

2.97 △C  
[75.5]

1.63 △C  
[41.5]



CAD FILENAME/LAYERS △F D34866DX\_DC\_T702EE\_03A.PRT

PANDUIT CORP. TINLEY PARK, ILLINOIS

T702 ENTRANCE END FITTING (T702EE) CUSTOMER DRAWING

UNLESS OTHERWISE SPECIFIED, DIMENSIONAL TOLERANCES ARE:  
(.X) ± (.XXX) ±  
(.XX) ±.03 (.8) ANGLES ±

UNLESS OTHERWISE SPECIFIED, ALL DIMENSIONS ARE GIVEN IN INCHES, THIRD ANGLE PROJECTION.

DRAWN BY DW

MAT'L:

SCALE NONE

DATE 02-27-98

PVC

DRAWING NO. 34866-71

CHECKED BY HIW

△A

SIZE A

REV	DATE	BY	CHK	DESCRIPTION	ECN	CHK	CUST	SUP
-	-----	---	--	H. REVISED PART DESCRIPTION: T702 ENTRANCE END FITTING WAS TWIN 70 ENTRANCE END	-----	-----	-----	
-	-----	---	--	G. ADDED DIMENSIONS F. REVISED CAD FILE NAME	-----	-----	-----	
3	08-13-04	JBN	PM	E. REVISED WEIGHT INFORMATION D. ADDED BEND RADIUS INSERTS	34866-71	RGRO	RGRO	
2	03-15-00	JHNU	BKR	C. ADDED DIMENSIONS FOR BREAKOUTS	34866-71	HIW	HIW	
1	07-27-99	DW	HIW	B. REVISED TITLE NAME A. MAT'L WAS ABS/PC AND REVISED WEIGHT	34866-71	HIW	HIW	
R	02-27-98	DW	HIW	RELEASED TO PRODUCTION	34866-71	HIW	HIW	