



Chipsmall Limited consists of a professional team with an average of over 10 year of expertise in the distribution of electronic components. Based in Hongkong, we have already established firm and mutual-benefit business relationships with customers from,Europe,America and south Asia,supplying obsolete and hard-to-find components to meet their specific needs.

With the principle of “Quality Parts,Customers Priority,Honest Operation,and Considerate Service”,our business mainly focus on the distribution of electronic components. Line cards we deal with include Microchip,ALPS,ROHM,Xilinx,Pulse,ON,Everlight and Freescale. Main products comprise IC,Modules,Potentiometer,IC Socket,Relay,Connector.Our parts cover such applications as commercial,industrial, and automotives areas.

We are looking forward to setting up business relationship with you and hope to provide you with the best service and solution. Let us make a better world for our industry!



Contact us

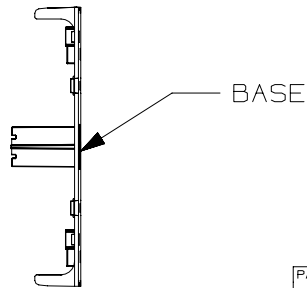
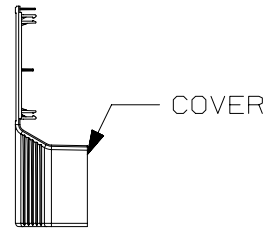
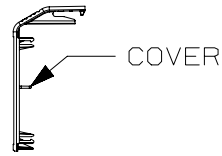
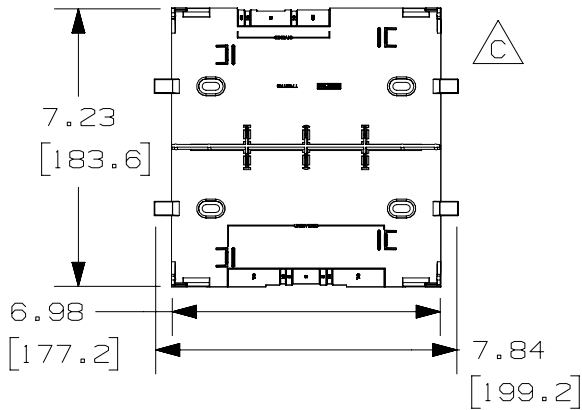
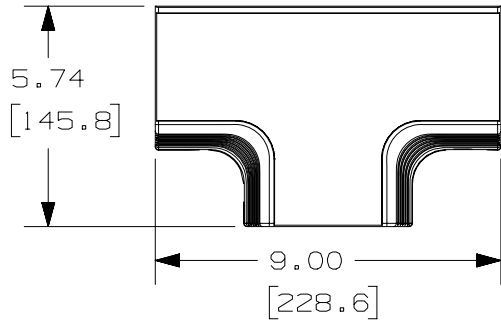
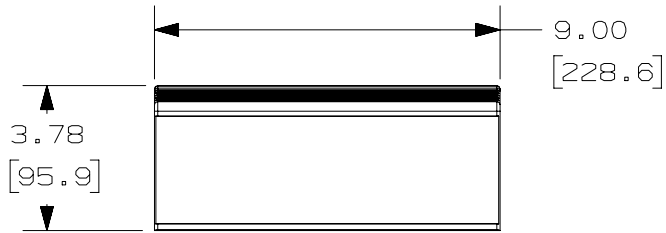
Tel: +86-755-8981 8866 Fax: +86-755-8427 6832

Email & Skype: info@chipsmall.com Web: www.chipsmall.com

Address: A1208, Overseas Decoration Building, #122 Zhenhua RD., Futian, Shenzhen, China



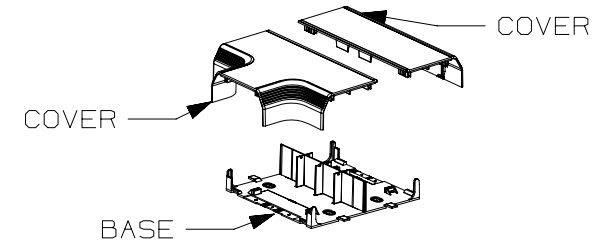
THIS COPY IS PROVIDED ON A RESTRICTED BASIS AND IS NOT TO BE USED IN ANY WAY DETRIMENTAL TO THE INTERESTS OF PANDUIT CORP.



PANDUIT P/N	WEIGHT
T702TR	8.6 LB/10 PCS (3.9 kg/10 PCS)

NOTES:

- SEE CURRENT CATALOG FOR ADDITIONAL PART SUFFIXES TO INDICATE COLOR AND OR PACKAGE QUANTITY.
- THIS PRODUCT IS FEATURED WITH THE TIA/EIA COMPLIANT BEND RADIUS.
- BREAKOUTS FOR LD3, LD5, LD10, T45 AND T-70 RACEWAYS.
- COVER IS EXTENDED OUT AND DOWN AROUND SIDES OF BASE WHEN ASSEMBLED.
- USE INSERT T702TRI, FOR DIVIDED TRANSITIONS.
- DIMENSIONS IN PARENTHESES ARE IN METRIC.



PART NUMBER: T702TR	PRODUCT SPECIFICATION NUMBER: N/A
FMEA/CONTROL PLAN NUMBER: N/A	PACKAGING INSTRUCTION NUMBER: N/A
INSPECTION INSTRUCTION NUMBER: N/A	WORK INSTRUCTION NUMBER: N/A

TITLE								
TWIN-70 TRANSITION								
CUSTOMER DRAWING								
ITEM REVISION NAME	PANDUIT							
D34866EC/03	MATERIAL: PVC A							
DATASET FILE NAME								
D34866EC_DC_T702TR/03	DRAWING NUMBER: 34866-91 E							
UNLESS OTHERWISE SPECIFIED, DIMENSIONAL TOLERANCES ARE: IN [mm]								
.x ± .1 [2.54] .xxx ± .005 [.127]	THIRD ANGLE PROJECTION							
.xx ± .01 [.25] ANGLES ± 5 °								
	DRAWN BY: DW DATE: 04-07-98 CHK: HIW SCALE: NONE							
REV	DATE	BY	CHK	APR	DESCRIPTION	ECN	SHT 1 OF 1	SIZE
								A

REV	DATE	BY	CHK	APR	DESCRIPTION	ECN
3	7-12-16	BJN	WFMI	SRI	D. UPDATED METRIC WEIGHT TO 3.9 kg/10 PCS, WAS 3.8 g/10 PCS E. UPDATED TITLE BLOCK	34866-91
2	01-13-00	JHNU	BKR	HIW	C. REVISED GEOMETRY FOR T45 BREAKOUT B. ADDED T45 TO NOTE 3	34866-91
1	07-29-99	DW	HIW	HIW	A. REVISED MATERIAL AND WEIGHT	34866-91
R	04-07-98	DW	HIW	HIW	RELEASED TO PRODUCTION	34866-91

D10100DA/14