



Chipsmall Limited consists of a professional team with an average of over 10 year of expertise in the distribution of electronic components. Based in Hongkong, we have already established firm and mutual-benefit business relationships with customers from,Europe,America and south Asia,supplying obsolete and hard-to-find components to meet their specific needs.

With the principle of “Quality Parts,Customers Priority,Honest Operation,and Considerate Service”,our business mainly focus on the distribution of electronic components. Line cards we deal with include Microchip,ALPS,ROHM,Xilinx,Pulse,ON,Everlight and Freescale. Main products comprise IC,Modules,Potentiometer,IC Socket,Relay,Connector.Our parts cover such applications as commercial,industrial, and automotives areas.

We are looking forward to setting up business relationship with you and hope to provide you with the best service and solution. Let us make a better world for our industry!



Contact us

Tel: +86-755-8981 8866 Fax: +86-755-8427 6832

Email & Skype: info@chipsmall.com Web: www.chipsmall.com

Address: A1208, Overseas Decoration Building, #122 Zhenhua RD., Futian, Shenzhen, China



RF Power Pot Capacitors with Mounting Tags, Class 1 Ceramic



FEATURES

- High reliability
- Multiple terminals
- Wide range of capacitance values

APPLICATIONS

- Induction and dielectric heating
- Antenna units
- Filter, bypass, and coupling circuits

QUICK REFERENCE DATA											
DESCRIPTION	VALUE										
Ceramic Class	1										
Ceramic Dielectric	R7, R16, R42, R85			R7, R42, R85				R7, R16, R42, R85, R230			
Type	TA 045090, TB 045090, TC 045090, TD 045090, TE 045090			TA 045120, TB 045120, TC 045120, TD 045120, TE 045120				TA 045150, TB 045150, TC 045150, TD 045150, TE 045150			
Voltage (V _p)	9000	10 000	10 000	11 000	12 000	13 000	11 000	12 000	13 000	14 000	
Min. Capacitance (pF)	2500	60	1600	160	80	50	5000	2000	400	60	
Max. Capacitance (pF)	2500	1600	1600	500	100	1000	5000	2000	1600	4000	
Mounting	Screw terminal										

MATERIAL

Capacitor elements made from class 1 ceramic dielectric with noble metal electrodes.

Connection terminals:
made from copper / brass, silver plated.

FINISH

Capacitor body completely protective lacquered.
The contoured insulating rim is additionally glazed.

MARKING

Type designator, capacitance value and tolerance, rated peak voltage, ceramic material code, production date code, manufacturer logo.

CAPACITANCE RANGE

50 pF to 5.0 nF

CAPACITANCE TOLERANCE

± 20 %; ± 10 %; ± 5 %

DIELECTRIC STRENGTH TEST

200 % of rated AC voltage (50 Hz, 5 minutes)

INSULATION RESISTANCE

Min. 100 000 MΩ (at 25 °C)

CERAMIC DIELECTRICS

- R7 (TCC + 100 ppm/K)
- R16 (TCC + 100 ppm/K)
- R42 (TCC - 250 ppm/K)
- R85 (TCC - 750 ppm/K)
- R230 (TCC - 750 ppm/K)

RATED VOLTAGE

- 9.0 kV_p
- 10.0 kV_p
- 11.0 kV_p
- 12.0 kV_p
- 13.0 kV_p
- 14.0 kV_p

DISSIPATION FACTOR

- R7: max. 0.07 %
- R16: max. 0.04 %
- R42, R85, R230: max. 0.05 %

Measuring frequencies:

1 MHz (< 1 nF); 300 kHz or 100 kHz (≥ 1 nF)

OPERATING TEMPERATURE RANGE

-55 °C to +100 °C

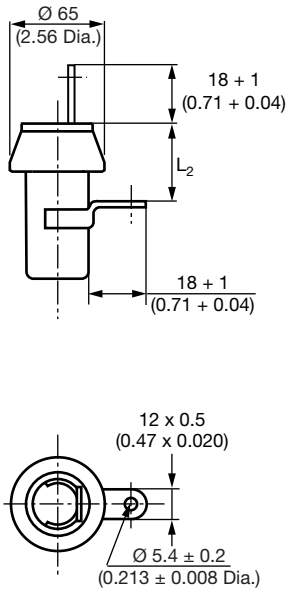
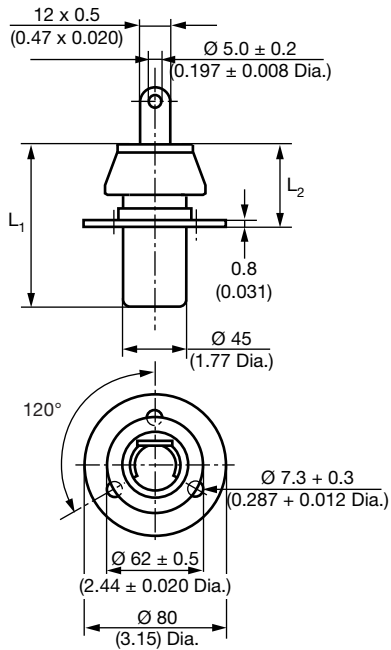
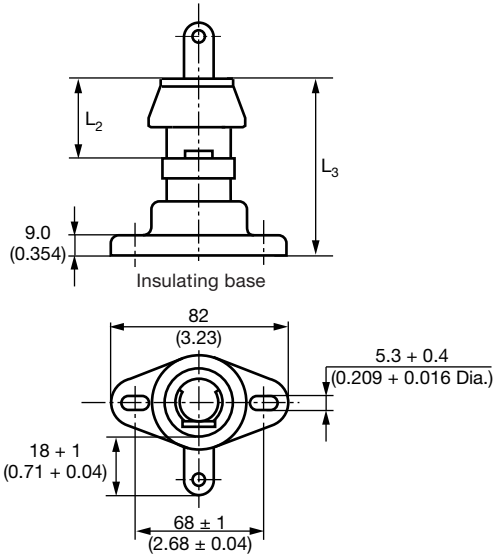
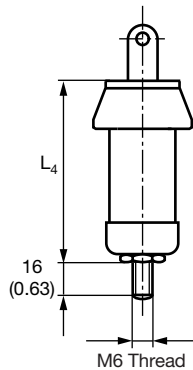
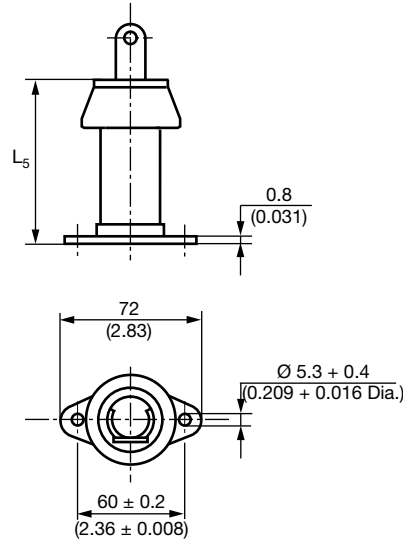


SAP PART NUMBER AND ELECTRICAL DATA							
PART NUMBER	CERAMIC	CAP. VALUES (pF)	RATED VOLTAGE (kV _p)	RATED POWER ⁽¹⁾ (kvar)	RATED CURRENT (A _{rms})		
TYPE T. 045090							
T#045090BH600##BF1	R7	60	10	22	12		
T#045090BH800##BF1		80					
T#045090BH101##BF1		100					
T#045090BH161##BF1		160					
T#045090BH201##BG1	R16	200					
T#045090BH251##BG1		250					
T#045090BH301##BG1		300					
T#045090BH401##BH1	R42	400					
T#045090BH501##BH1		500					
T#045090BH601##BH1		600					
T#045090BH801##BJ1	R85	800		9.0		28	
T#045090BH102##BJ1		1000					
T#045090BH162##BJ1		1600					
T#045090WC252##BJ1		2500					
TYPE T. 045120							
T#045120WH500##BF1	R7	50	13	28	10		
T#045120WH600##BF1		60					
T#045120WF800##BF1		80	12				
T#045120WF101##BF1		100					
T#045120WE161##BF1		160	11				
T#045120WH251##BH1	R42	250	13				
T#045120WH301##BH1		300					
T#045120WH401##BH1		400					
T#045120WE501##BH1		500		11			
T#045120WH601##BJ1	R85	600	13	35			
T#045120WH801##BJ1		800					
T#045120WH102##BJ1		1000					
T#045120BH162##BJ1		1600				10	
TYPE T. 045150							
T#045150WJ600##BF1	R7	60	14	35	12		
T#045150WJ800##BF1		80					
T#045150WJ101##BF1		100					
T#045150WJ201##BG1	R16	200					
T#045150WJ301##BH1	R42	300				13	
T#045150WH401##BH1		400					
T#045150WH501##BH1		500					
T#045150WH601##BH1		600					
T#045150WJ801##BJ1	R85	800		14		42	
T#045150WH102##BJ1		1000					
T#045150WH162##BJ1		1600					
T#045150WF202##BJ1		2000					12
T#045150WJ302##BK1		R230					3000
T#045150WJ402##BK1	4000						
T#045150WE502##BK1	5000		11				

Notes

- # 2nd digit: code letter of the terminal version A, B, C, D, E
- ## 14th to 15th digit: capacitance tolerance code $\pm 20\% = 38$, $\pm 10\% = 36$, $\pm 5\% = 33$
- (¹) The surface temperature during operation must not exceed +100 °C

DIMENSIONS in millimeters (inches)

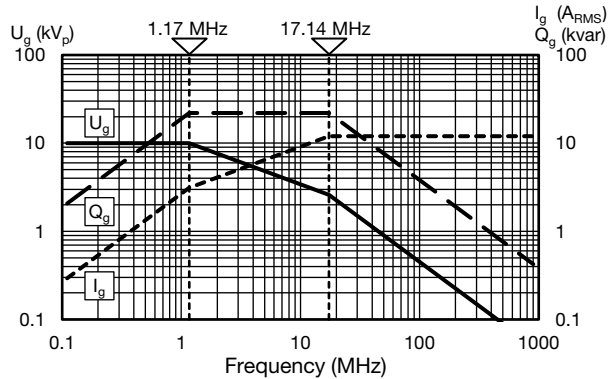
TA

TB

TC

TD

TE


TYPE	T. 045090	T. 045120	T. 045150
Length L ₁	90 (3.54)	120 (4.72)	150 (5.91)
Length L ₂	45 ± 2 (1.77 ± 0.08)	60 ± 2 (2.36 ± 0.08)	75 ± 2 (2.95 ± 0.08)
Length L ₃	96 ± 2 (3.78 ± 0.08)	126 ± 2 (4.96 ± 0.08)	156 ± 2 (6.14 ± 0.08)
Length L ₄	97 (3.82)	127 (5.00)	157 (6.18)
Length L ₅	92 ± 2 (3.62 ± 0.08)	122 ± 2 (4.80 ± 0.08)	152 ± 2 (5.98 ± 0.08)

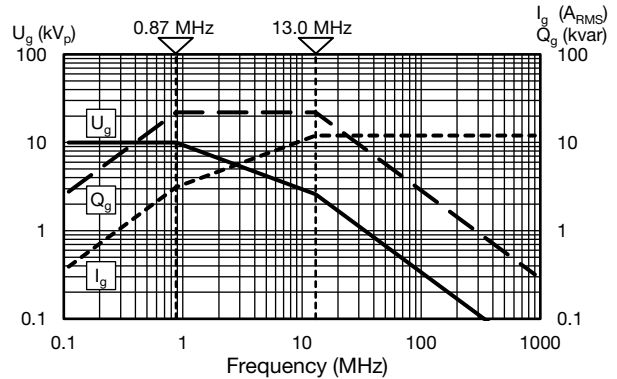


DERATING DIAGRAMS

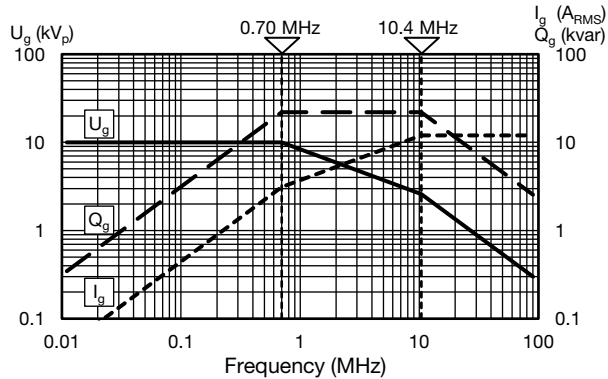
T#045090BH600##BF1



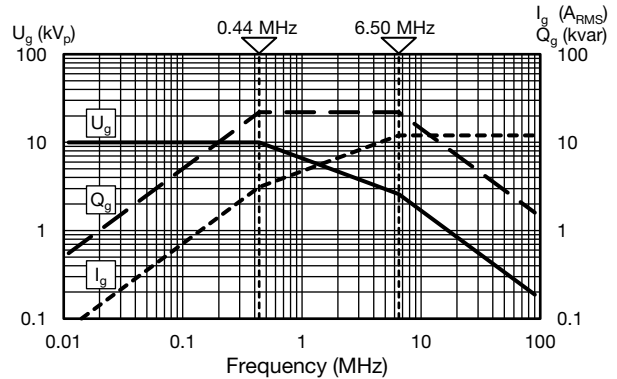
T#045090BH800##BF1



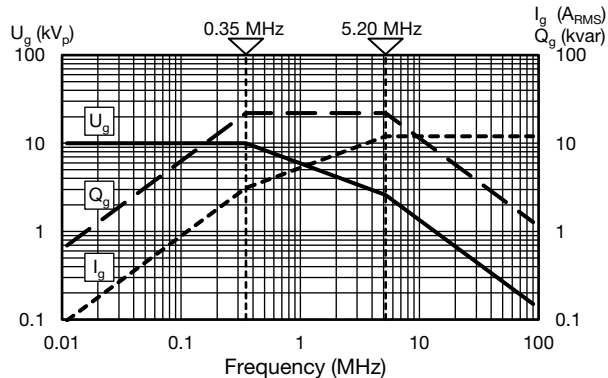
T#045090BH101##BF1



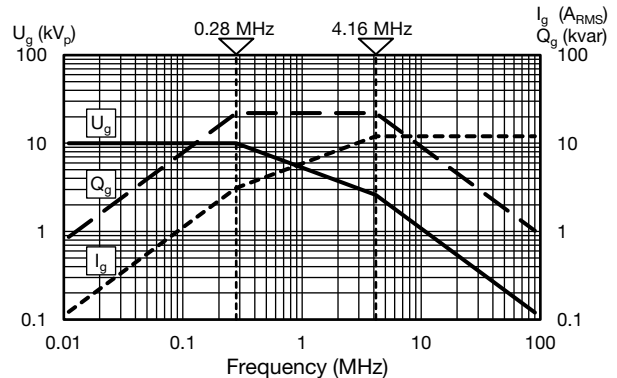
T#045090BH161##BF1



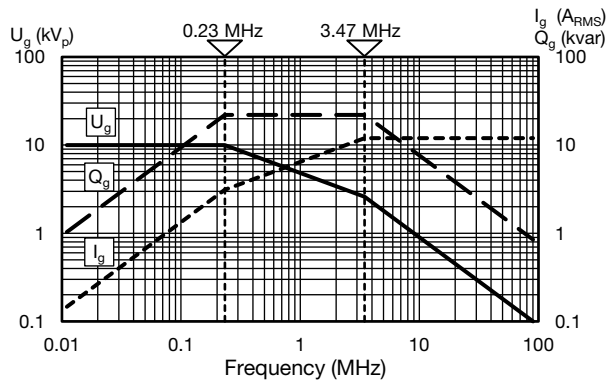
T#045090BH201##BG1



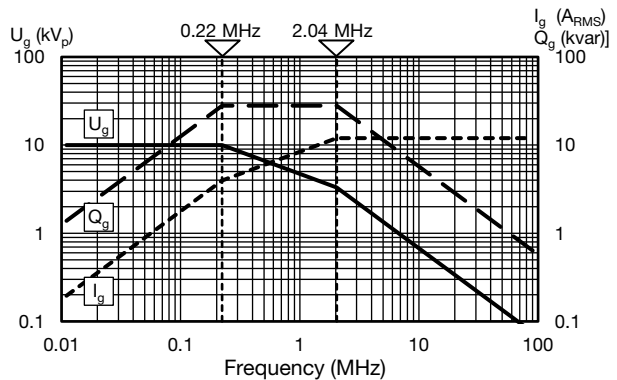
T#045090BH251##BG1



T#045090BH301##BG1



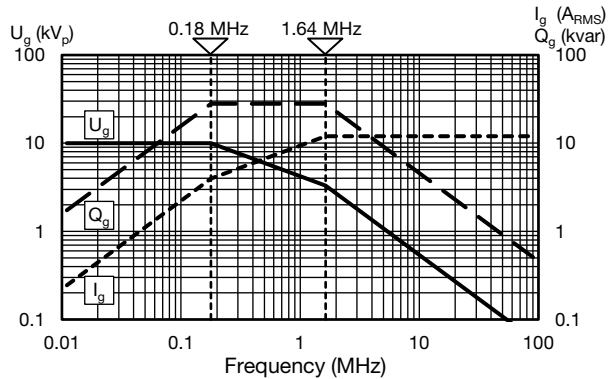
T#045090BH401##BH1



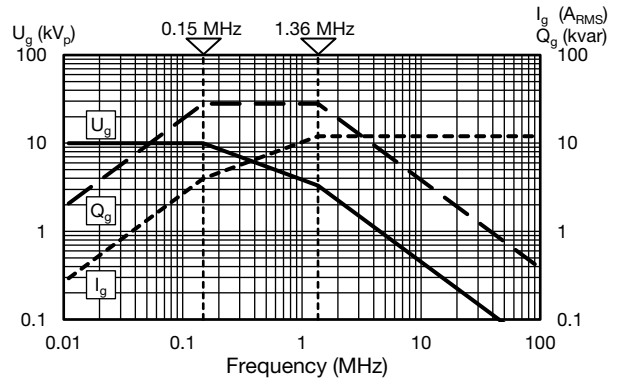


DERATING DIAGRAMS

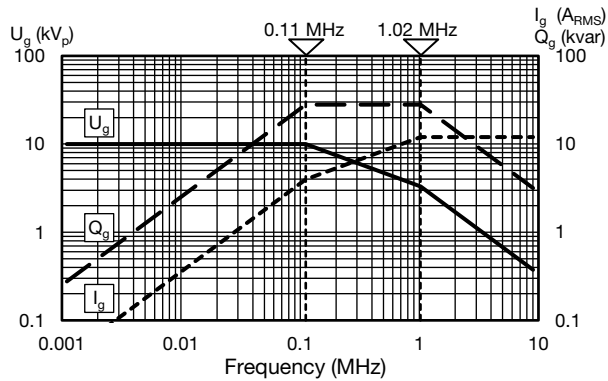
T#045090BH501##BH1



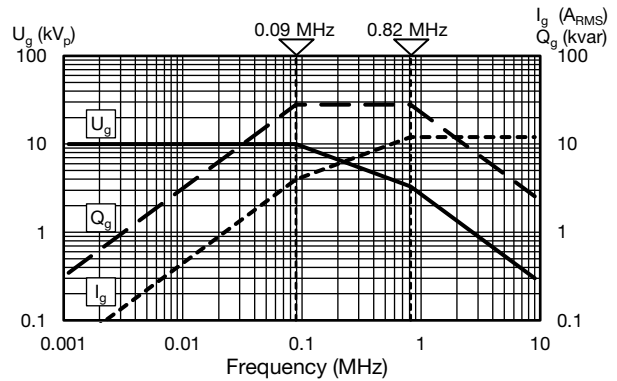
T#045090BH601##BH1



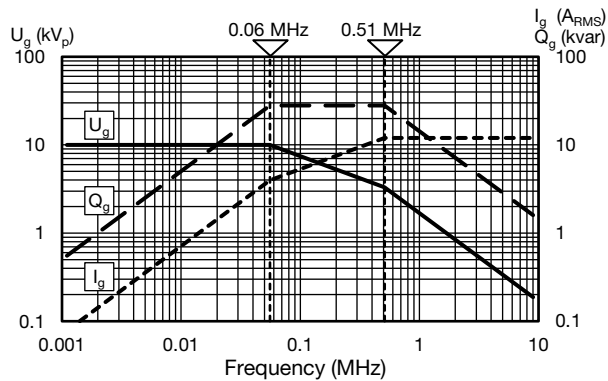
T#045090BH801##BJ1



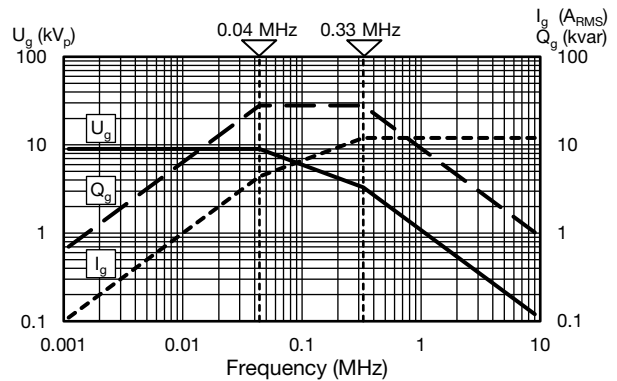
T#045090BH102##BJ1



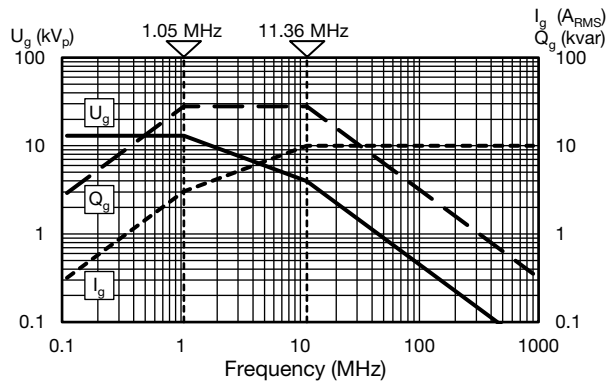
T#045090BH162##BJ1



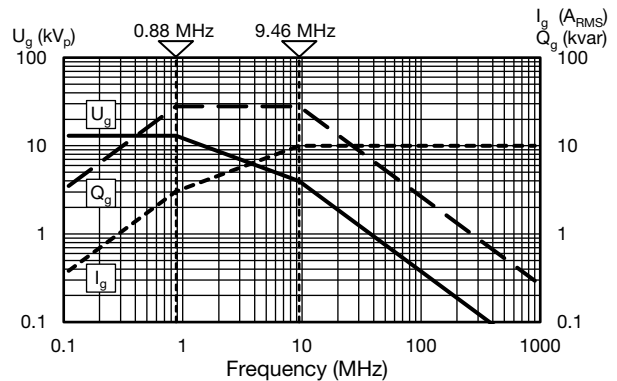
T#045090WC252##BJ1



T#045120WH500##BF1

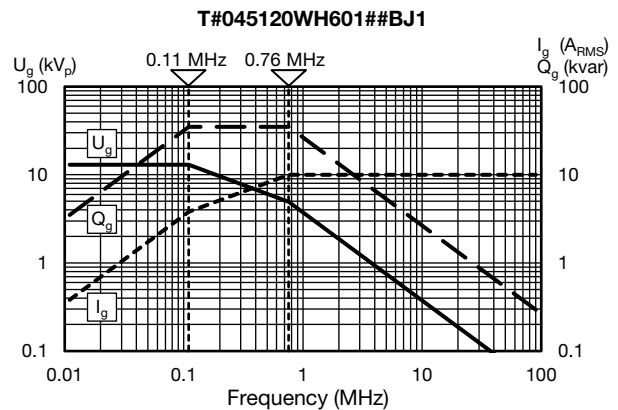
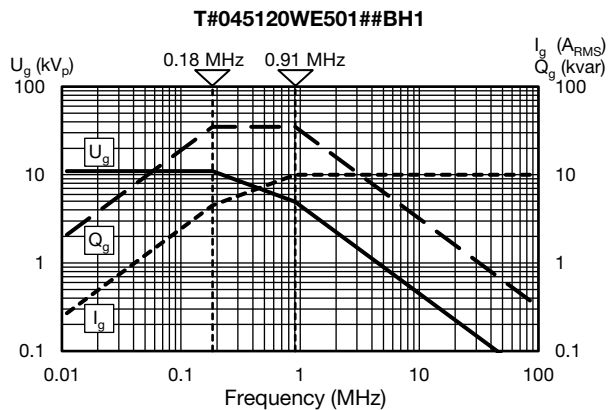
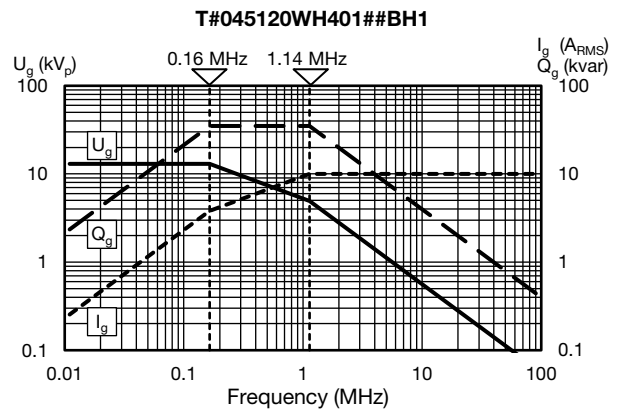
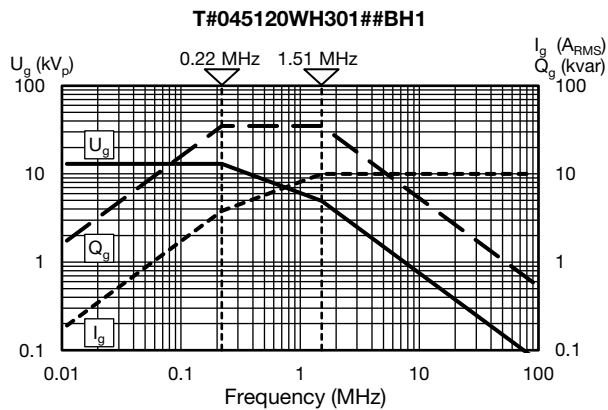
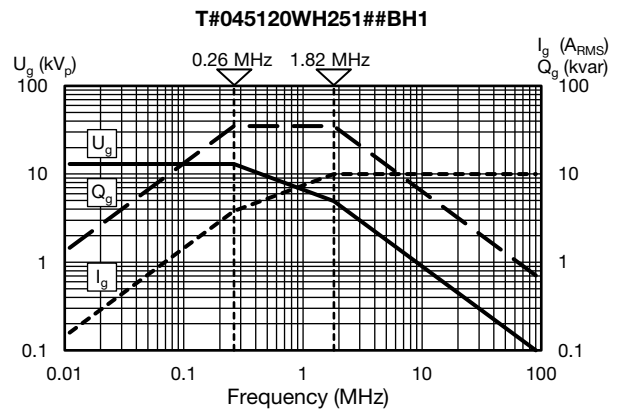
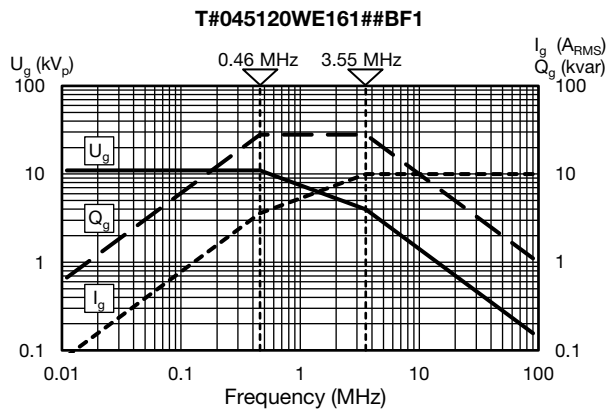
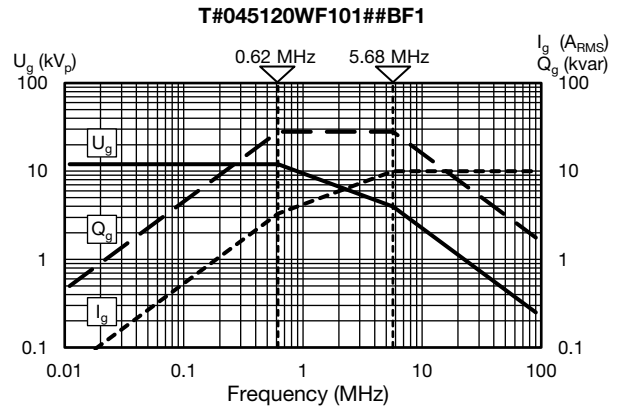
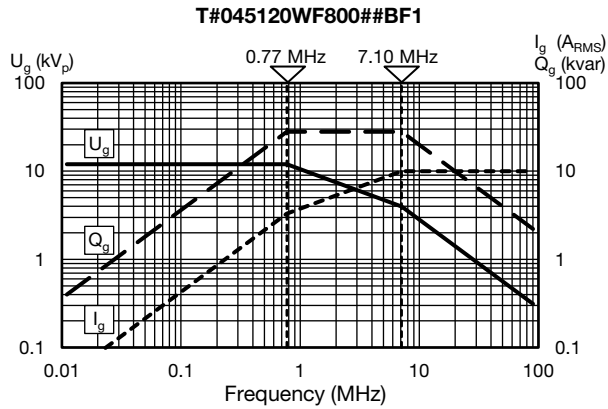


T#045120WH600##BF1





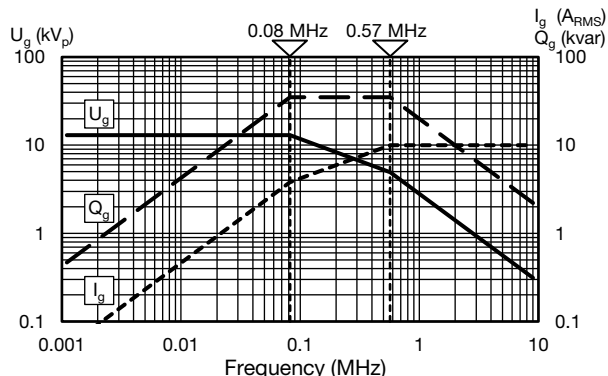
DERATING DIAGRAMS



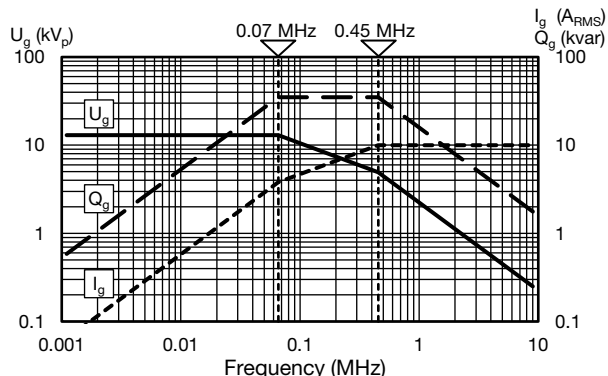


DERATING DIAGRAMS

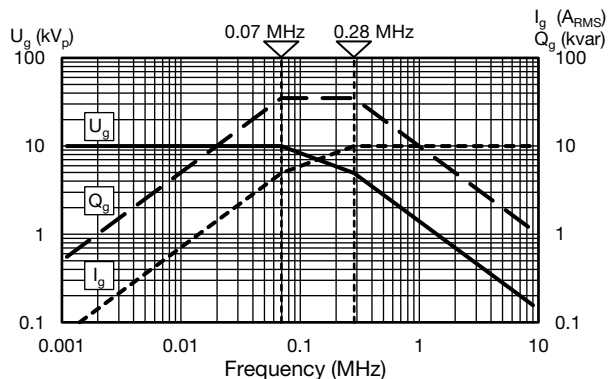
T#045120WH801##BJ1



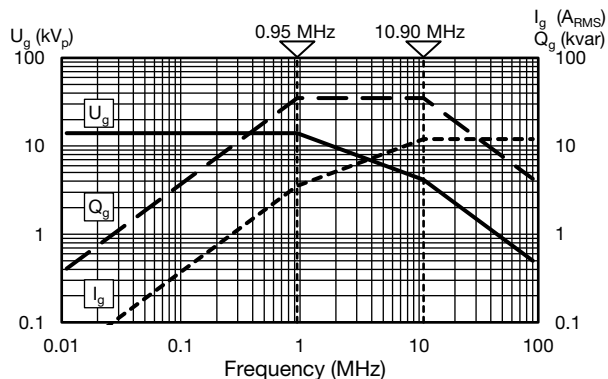
T#045120WH102##BJ1



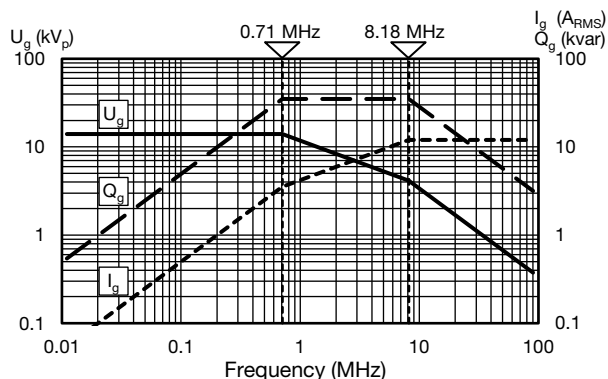
T#045120BH162##BJ1



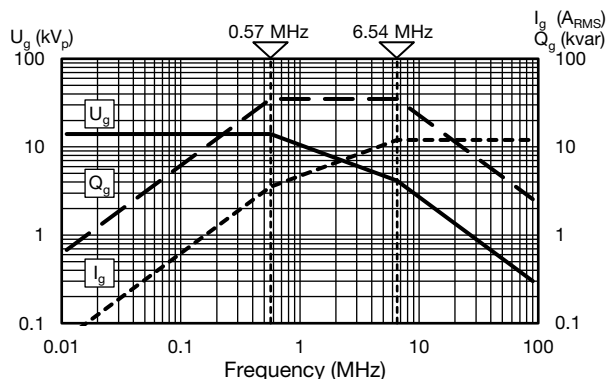
T#045150WJ600##BF1



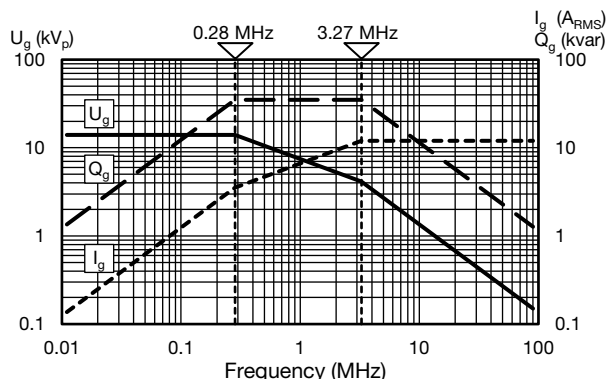
T#045150WJ800##BF1



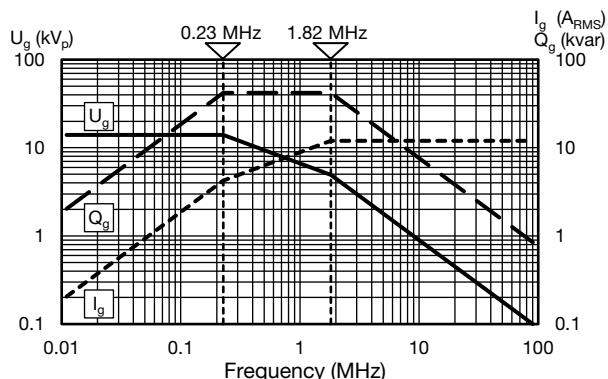
T#045150WJ101##BF1



T#045150WJ201##BG1



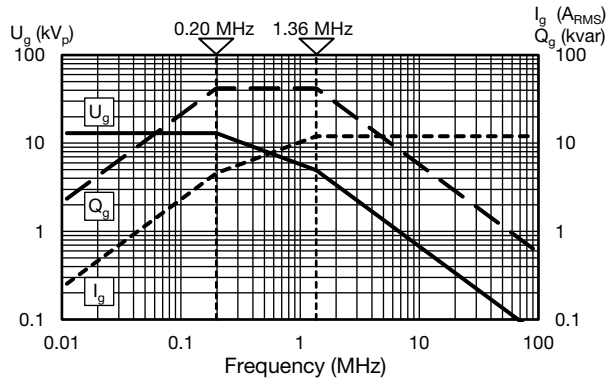
T#045150WJ301##BH1



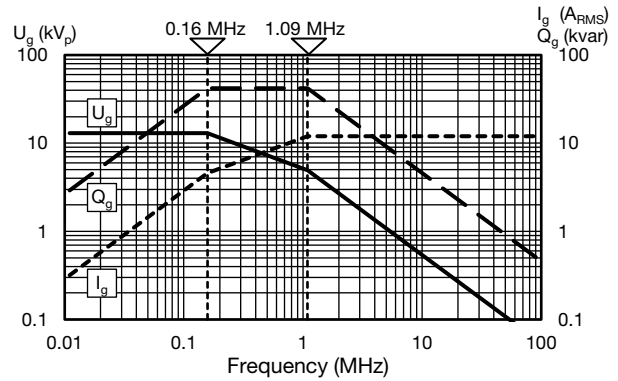


DERATING DIAGRAMS

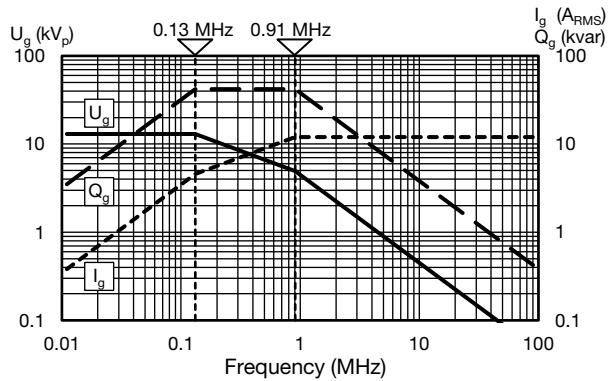
T#045150WH401##BH1



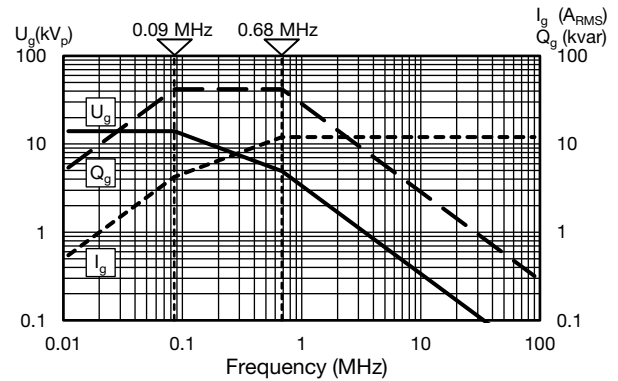
T#045150WH501##BH1



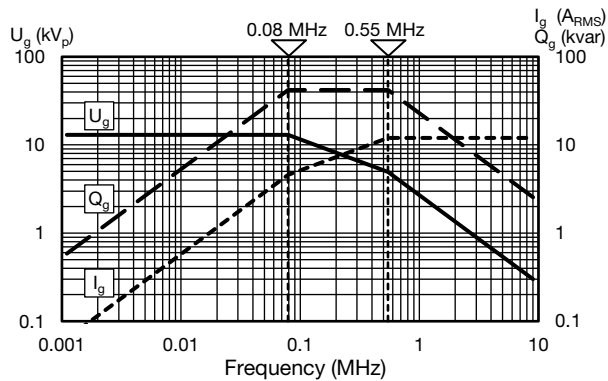
T#045150WH601##BH1



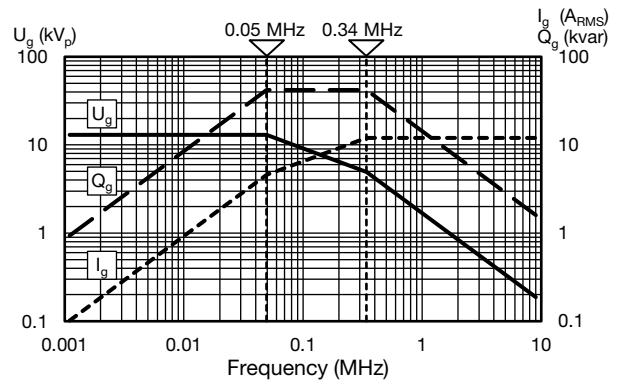
T#045150WJ801##BJ1



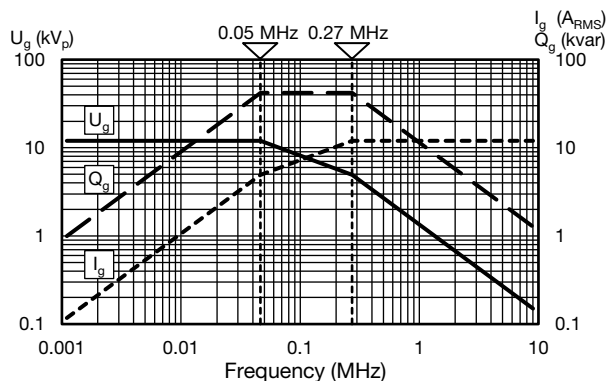
T#045150WH102##BJ1



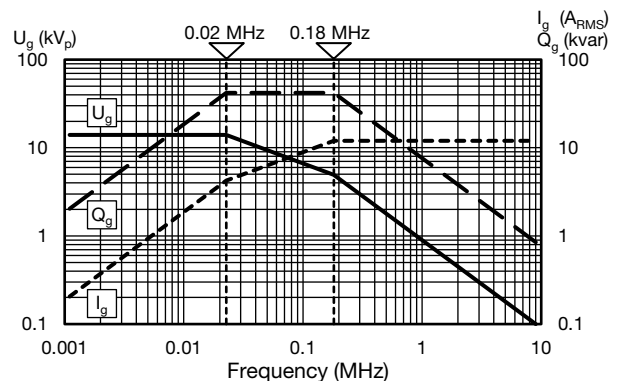
T#045150WH162##BJ1



T#045150WF202##BJ1

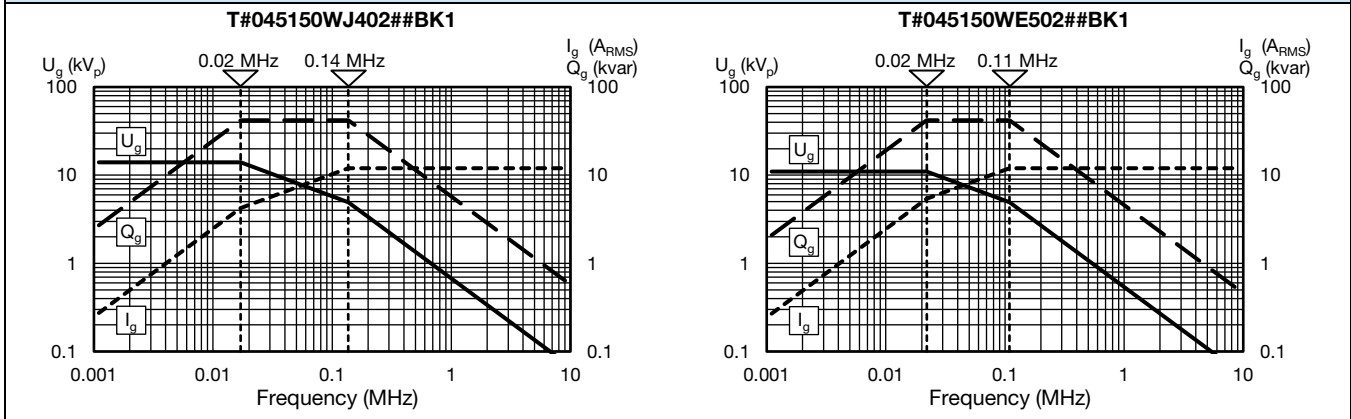


T#045150WJ302##BK1





DERATING DIAGRAMS



RELATED DOCUMENTS

General Information

www.vishay.com/doc?22071



Disclaimer

ALL PRODUCT, PRODUCT SPECIFICATIONS AND DATA ARE SUBJECT TO CHANGE WITHOUT NOTICE TO IMPROVE RELIABILITY, FUNCTION OR DESIGN OR OTHERWISE.

Vishay Intertechnology, Inc., its affiliates, agents, and employees, and all persons acting on its or their behalf (collectively, "Vishay"), disclaim any and all liability for any errors, inaccuracies or incompleteness contained in any datasheet or in any other disclosure relating to any product.

Vishay makes no warranty, representation or guarantee regarding the suitability of the products for any particular purpose or the continuing production of any product. To the maximum extent permitted by applicable law, Vishay disclaims (i) any and all liability arising out of the application or use of any product, (ii) any and all liability, including without limitation special, consequential or incidental damages, and (iii) any and all implied warranties, including warranties of fitness for particular purpose, non-infringement and merchantability.

Statements regarding the suitability of products for certain types of applications are based on Vishay's knowledge of typical requirements that are often placed on Vishay products in generic applications. Such statements are not binding statements about the suitability of products for a particular application. It is the customer's responsibility to validate that a particular product with the properties described in the product specification is suitable for use in a particular application. Parameters provided in datasheets and / or specifications may vary in different applications and performance may vary over time. All operating parameters, including typical parameters, must be validated for each customer application by the customer's technical experts. Product specifications do not expand or otherwise modify Vishay's terms and conditions of purchase, including but not limited to the warranty expressed therein.

Except as expressly indicated in writing, Vishay products are not designed for use in medical, life-saving, or life-sustaining applications or for any other application in which the failure of the Vishay product could result in personal injury or death. Customers using or selling Vishay products not expressly indicated for use in such applications do so at their own risk. Please contact authorized Vishay personnel to obtain written terms and conditions regarding products designed for such applications.

No license, express or implied, by estoppel or otherwise, to any intellectual property rights is granted by this document or by any conduct of Vishay. Product names and markings noted herein may be trademarks of their respective owners.