



Chipsmall Limited consists of a professional team with an average of over 10 year of expertise in the distribution of electronic components. Based in Hongkong, we have already established firm and mutual-benefit business relationships with customers from,Europe,America and south Asia,supplying obsolete and hard-to-find components to meet their specific needs.

With the principle of “Quality Parts,Customers Priority,Honest Operation,and Considerate Service”,our business mainly focus on the distribution of electronic components. Line cards we deal with include Microchip,ALPS,ROHM,Xilinx,Pulse,ON,Everlight and Freescale. Main products comprise IC,Modules,Potentiometer,IC Socket,Relay,Connector.Our parts cover such applications as commercial,industrial, and automotives areas.

We are looking forward to setting up business relationship with you and hope to provide you with the best service and solution. Let us make a better world for our industry!



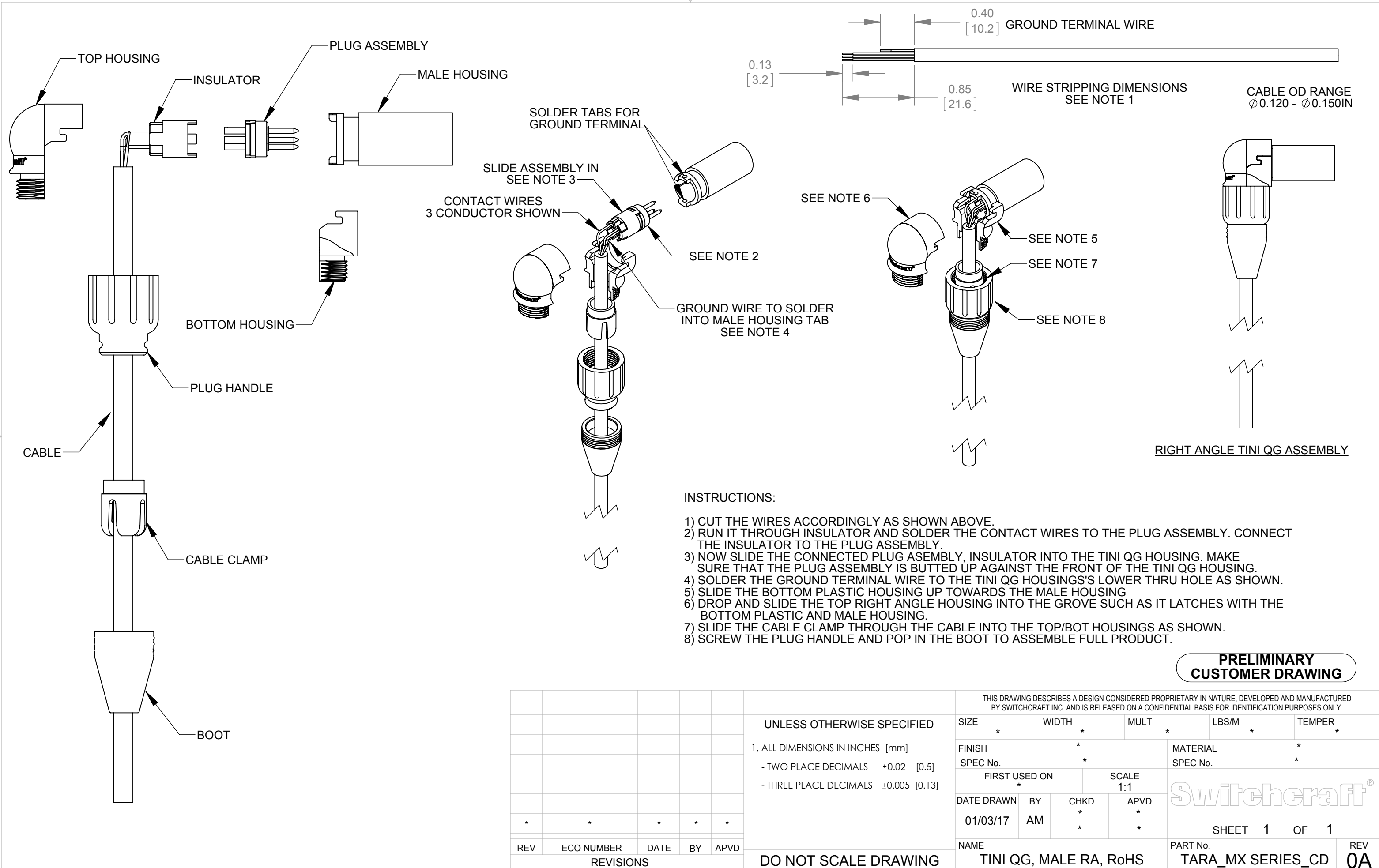
Contact us

Tel: +86-755-8981 8866 Fax: +86-755-8427 6832

Email & Skype: info@chipsmall.com Web: www.chipsmall.com

Address: A1208, Overseas Decoration Building, #122 Zhenhua RD., Futian, Shenzhen, China





SOLDER TABS FOR GROUND TERMINAL

SLIDE ASSEMBLY IN SEE NOTE 3

CONTACT WIRES 3 CONDUCTOR SHOWN

SEE NOTE 2

GROUND WIRE TO SOLDER INTO MALE HOUSING TAB SEE NOTE 4

0.40 [10.2] GROUND TERMINAL WIRE

0.13 [3.2]

0.85 [21.6]

WIRE STRIPPING DIMENSIONS SEE NOTE 1

CABLE OD RANGE $\varnothing 0.120 - \varnothing 0.150\text{IN}$

SEE NOTE 6

SEE NOTE 5

SEE NOTE 7

SEE NOTE 8

RIGHT ANGLE TINI QG ASSEMBLY

- INSTRUCTIONS:
- 1) CUT THE WIRES ACCORDINGLY AS SHOWN ABOVE.
 - 2) RUN IT THROUGH INSULATOR AND SOLDER THE CONTACT WIRES TO THE PLUG ASSEMBLY. CONNECT THE INSULATOR TO THE PLUG ASSEMBLY.
 - 3) NOW SLIDE THE CONNECTED PLUG ASSEMBLY, INSULATOR INTO THE TINI QG HOUSING. MAKE SURE THAT THE PLUG ASSEMBLY IS BUTTED UP AGAINST THE FRONT OF THE TINI QG HOUSING.
 - 4) SOLDER THE GROUND TERMINAL WIRE TO THE TINI QG HOUSING'S LOWER THRU HOLE AS SHOWN.
 - 5) SLIDE THE BOTTOM PLASTIC HOUSING UP TOWARDS THE MALE HOUSING
 - 6) DROP AND SLIDE THE TOP RIGHT ANGLE HOUSING INTO THE GROVE SUCH AS IT LATCHES WITH THE BOTTOM PLASTIC AND MALE HOUSING.
 - 7) SLIDE THE CABLE CLAMP THROUGH THE CABLE INTO THE TOP/BOT HOUSINGS AS SHOWN.
 - 8) SCREW THE PLUG HANDLE AND POP IN THE BOOT TO ASSEMBLE FULL PRODUCT.

PRELIMINARY CUSTOMER DRAWING

UNLESS OTHERWISE SPECIFIED 1. ALL DIMENSIONS IN INCHES [mm] - TWO PLACE DECIMALS ± 0.02 [0.5] - THREE PLACE DECIMALS ± 0.005 [0.13]					THIS DRAWING DESCRIBES A DESIGN CONSIDERED PROPRIETARY IN NATURE, DEVELOPED AND MANUFACTURED BY SWITCHCRAFT INC. AND IS RELEASED ON A CONFIDENTIAL BASIS FOR IDENTIFICATION PURPOSES ONLY.				
					SIZE *	WIDTH *	MULT *	LBS/M *	TEMPER *
REVISIONS REV ECO NUMBER DATE BY APVD					FINISH * SPEC No. *		MATERIAL * SPEC No. *		
					FIRST USED ON *		SCALE 1:1		
DO NOT SCALE DRAWING					DATE DRAWN	BY	CHKD	APVD	
					01/03/17	AM	*	*	
SolidWorks CAD File B					NAME TINI QG, MALE RA, RoHS			PART No. TARA_MX SERIES_CD	
					SHEET 1 OF 1			REV 0A	