



Chipsmall Limited consists of a professional team with an average of over 10 year of expertise in the distribution of electronic components. Based in Hongkong, we have already established firm and mutual-benefit business relationships with customers from,Europe,America and south Asia,supplying obsolete and hard-to-find components to meet their specific needs.

With the principle of “Quality Parts,Customers Priority,Honest Operation,and Considerate Service”,our business mainly focus on the distribution of electronic components. Line cards we deal with include Microchip,ALPS,ROHM,Xilinx,Pulse,ON,Everlight and Freescale. Main products comprise IC,Modules,Potentiometer,IC Socket,Relay,Connector.Our parts cover such applications as commercial,industrial, and automotives areas.

We are looking forward to setting up business relationship with you and hope to provide you with the best service and solution. Let us make a better world for our industry!



## Contact us

Tel: +86-755-8981 8866 Fax: +86-755-8427 6832

Email & Skype: info@chipsmall.com Web: www.chipsmall.com

Address: A1208, Overseas Decoration Building, #122 Zhenhua RD., Futian, Shenzhen, China



# 2 Series

## Miniature Screened 0.5A, 1.5kV



- **1.5kV Isolation**
- **1A Carry current (up to 30MHz)**
- **1" Package size**
- **Custom versions can be designed to meet particular applications**
- **Long life expectancy**

A subminiature package relay for RF applications in the 1-30MHz band.

The use of vacuum reed switches with Ruthenium over Rhodium contacts offers high isolation voltages, low contact resistance and long operating lifetime.

Additional RF screening is available to enhance the RF performance for more demanding applications.

All connections are via PCB.

Available with SPNO (Form A), SPNC (Form B) or latching (Bistable) switching action.

Contact Specification	unit	condition	TAR212SM	TBR212SM	TLR212SM
Contact material			Ruthenium*	Ruthenium*	Ruthenium*
Switch action			SPNO	SPNC	Bistable
Carry Current max	A	RMS@30MHz	1.0	1.0	1.0
Switching Current	A	DC max	0.5	0.5	0.5
Switching Power	W	max	10	10	10
Switching Voltage Max	V	dc or ac peak	300	300	300
Isolation across contacts	kV	DC max	1.5	1.5	1.5
Capacitance	pF	coil/screen gnd	<0.4	<0.4	<0.4
Contact connections		pin position	1 & 4	1 & 4	1 & 4
Lifetime	operations	dry switching	10 <sup>9</sup>	10 <sup>9</sup>	10 <sup>9</sup>
Contact Resistance	mW	max	200	200	200
insulation Resistance	mW	max (typical)	10 <sup>10</sup> (10 <sup>13</sup> )	10 <sup>10</sup> (10 <sup>13</sup> )	10 <sup>10</sup> (10 <sup>13</sup> )

\* Ruthenium over Rhodium

Coil at 20°C					
Operating Voltage	V	Nominal	12	12	12
Must Operate Voltage	V		8	8	8
Must Release Voltage	V		2	2	N/A
Resistance	W	Nominal	200	900	1530
RF Screening			Full	Full	Full
RF Screening Connection		pin position	8	8	8
Coil Connection		pin position	6 & 7	6 & 7	6 & 7

Relay					
Construction			Covered	Covered	Covered
Operate Time	ms	max incl bounce	1.0	1.0	1.0
Release Time	ms	max incl bounce	0.5	0.5	N/A
Isolation Contact to all other terminals	kV	DC max	1.5	1.5	1.5
Isolation Contact to Screen	V	DC max	250	250	250

Environmental					
Storage Temperature	°C	range		-40 to +125	
Operating Temperature	°C	limited current		-40 to +85	
Weight	gm	typical	20	20	20

Please refer to this document for circuit design notes:-  
<http://www.cynergy3.com/blog/application-notes-reed-relays-0>

Cynergy3 Components Ltd.  
 7 Cobham Road  
 Ferndown Industrial Estate  
 Wimborne, Dorset BH21 7PE  
 Telephone +44 (0) 1202 897969

Email:sales@cynergy3.com

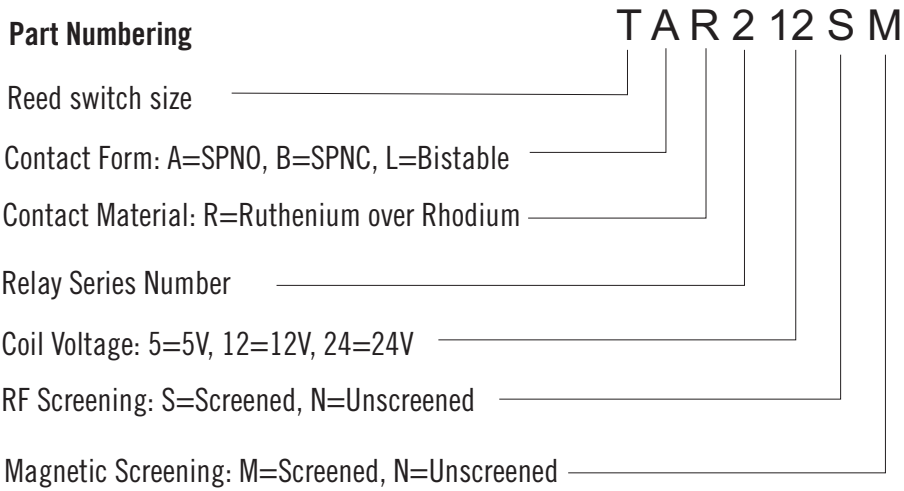
ISO9001 CERTIFIED

2 Series 2016

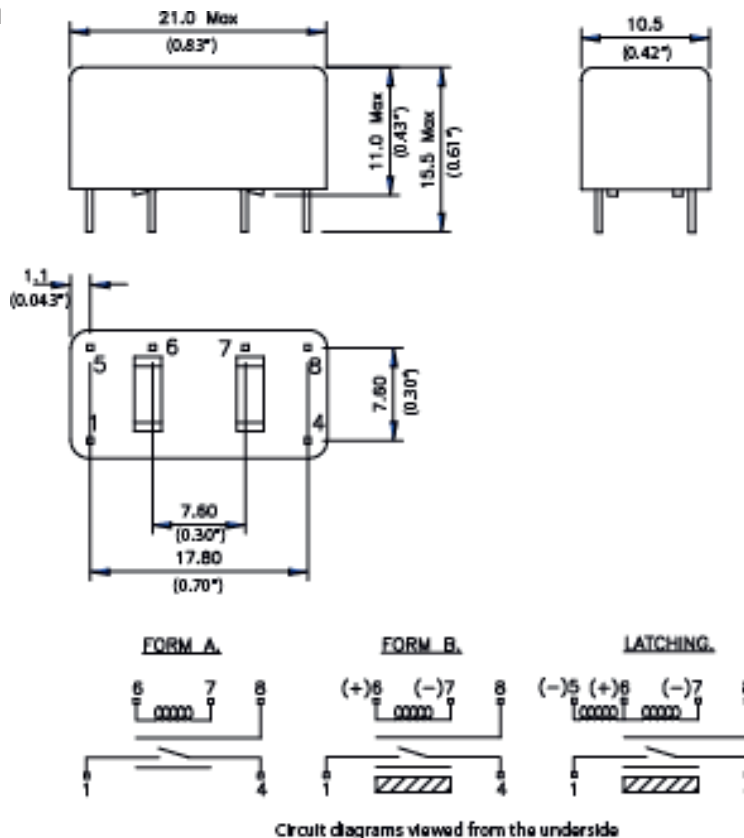
www.cynergy3.com

# 2 Series

Miniature Screened 0.5A, 1.5kV



## Mechanical Diagram



Cynergy3 Components Ltd.  
 7 Cobham Road  
 Ferndown Industrial Estate  
 Wimborne, Dorset BH21 7PE  
 Telephone +44 (0) 1202 897969

Email: sales@cynergy3.com

**ISO9001 CERTIFIED**

Please refer to this document for circuit design notes:-  
<http://www.cynergy3.com/blog/application-notes-reed-relays-0>

www.cynergy3.com