



Chipsmall Limited consists of a professional team with an average of over 10 year of expertise in the distribution of electronic components. Based in Hongkong, we have already established firm and mutual-benefit business relationships with customers from,Europe,America and south Asia,supplying obsolete and hard-to-find components to meet their specific needs.

With the principle of “Quality Parts,Customers Priority,Honest Operation,and Considerate Service”,our business mainly focus on the distribution of electronic components. Line cards we deal with include Microchip,ALPS,ROHM,Xilinx,Pulse,ON,Everlight and Freescale. Main products comprise IC,Modules,Potentiometer,IC Socket,Relay,Connector.Our parts cover such applications as commercial,industrial, and automotives areas.

We are looking forward to setting up business relationship with you and hope to provide you with the best service and solution. Let us make a better world for our industry!



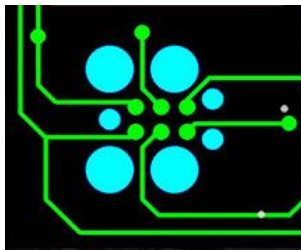
Contact us

Tel: +86-755-8981 8866 Fax: +86-755-8427 6832

Email & Skype: info@chipsmall.com Web: www.chipsmall.com

Address: A1208, Overseas Decoration Building, #122 Zhenhua RD., Futian, Shenzhen, China





Tag-Connect



TC2030-CTX Plug-of-Nails™ Cable

ARM Cortex 10-pin Cable with 6-Pin TC2030 Plug-of-Nails™ Connector.

Tag-Connect Plug-of-Nails™
TC2030-NL



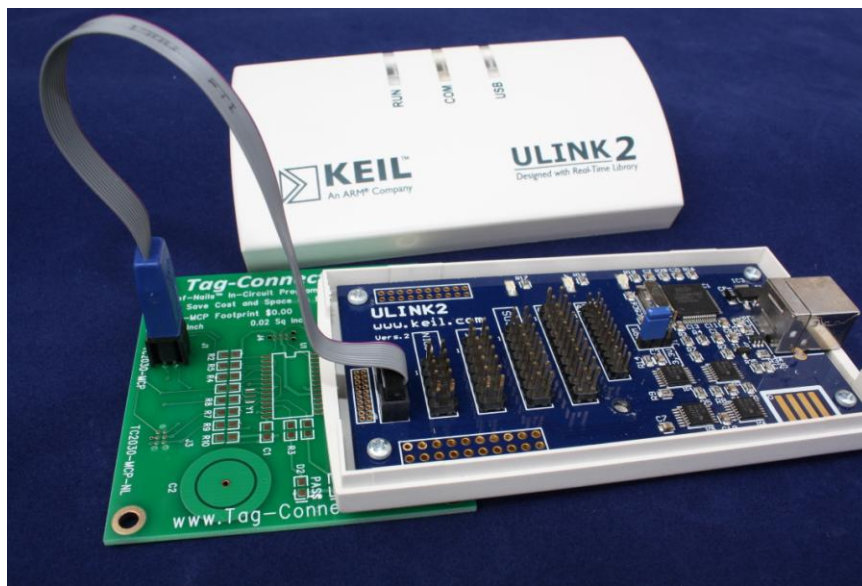
0.02 Sq Inch



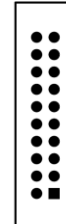
0.06 Sq Inch

Cortex SWD
FTSH-105 micro header

**Footprint Space
Comparison**
66% Space Saving



ARM 20-Pin



TC2030

**ARM 20-Pin vs
TC2030**
**84% Space
Saving**

(Illustration only - ULINK2 not included!)

Tag-Connect - Save Cost and Space on Every Board!

The TC2050-CTX and TC2030-CTL-NL are Plug-of-Nails™ Spring-Pin cables intended for ARM CORTEX SWD (Single Wire Debug) applications. Our patented Plug-of-Nails™ connectors plug directly to a tiny footprint of pads and locating holes in your PCB saving you cost and PCB space. The cable's ribbon connector plugs into the standard FTSH-105 style 10-pin Cortex Debug Connector as found in KEIL's ULINK2 and other CORTEX compatible debuggers.

Connections:

10-Pin Cortex Debug Connector		6-Pin TC2030 Footprint
1 VCC	2 SWDIO / TMS	1 VCC
3 GND	4 SWCLK / TCK	2 SWDIO / TMS
5 GND	6 SWO / TDO	3 nRESET
7 NC / RTCK	8 NC / TDI	4 SWCLK / TCK
9 GNDDetect	10 nRESET	5 GND (also connected to GNDDetect)
		6 SWO / TDO

Notes

Please refer to TC2030-IDC or TC2030-IDC-NL datasheets for details of the TC2030 footprints. See also our TC2050-ARM2010 20-pin ARM adapter for use with our TC2050-IDC series cables.

Visit www.Tag-Connect.com for technical support and product info.

TC2050-IDC Plug-of-Nails™ Connectors are protected by U.S. Patent Nos. 7,878,834 & 8,057,248. International Patent Pending