



Chipsmall Limited consists of a professional team with an average of over 10 year of expertise in the distribution of electronic components. Based in Hongkong, we have already established firm and mutual-benefit business relationships with customers from,Europe,America and south Asia,supplying obsolete and hard-to-find components to meet their specific needs.

With the principle of “Quality Parts,Customers Priority,Honest Operation,and Considerate Service”,our business mainly focus on the distribution of electronic components. Line cards we deal with include Microchip,ALPS,ROHM,Xilinx,Pulse,ON,Everlight and Freescale. Main products comprise IC,Modules,Potentiometer,IC Socket,Relay,Connector.Our parts cover such applications as commercial,industrial, and automotives areas.

We are looking forward to setting up business relationship with you and hope to provide you with the best service and solution. Let us make a better world for our industry!



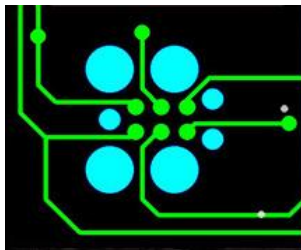
Contact us

Tel: +86-755-8981 8866 Fax: +86-755-8427 6832

Email & Skype: info@chipsmall.com Web: www.chipsmall.com

Address: A1208, Overseas Decoration Building, #122 Zhenhua RD., Futian, Shenzhen, China



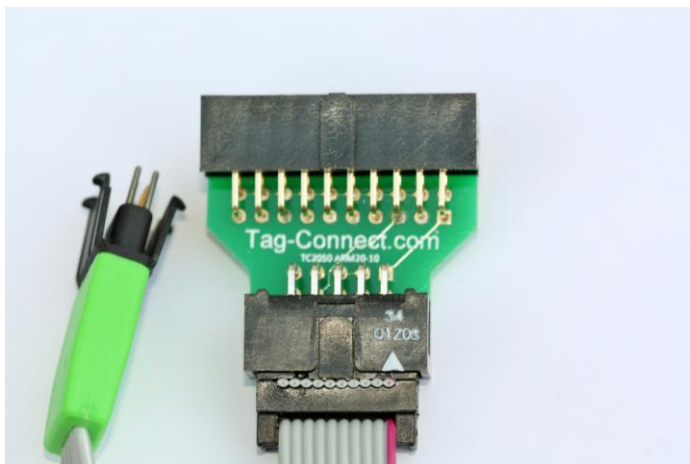


Tag-Connect



TC2050-ARM2010 ARM 20-pin to TC2050 Adapter

ARM 20-pin to ARM 10-pin JTAG or ARM SWD using TC2050 Cables Plug-of-Nails™ Cables.



*(Pictures for illustrational use only - TC2050-IDC Cable and Segger's J-Link Debugger not included!
J-Link is a product of Segger Microcontroller GmbH & Co. KG with whom Tag-Connect has no association)*

Tag-Connect - Save Cost and Space on Every Board!

The TC2050-ARM2010 is a Tag-Connect adapter board allowing our TC2050-IDC cables to be used for ARM JTAG and ARM SWD (Single Wire Debug) applications. Although intended for use with our patented TC2050-IDC Plug-of-Nails™ Cables, the adapter may be useful to people wishing to use 10-pin 0.1" ribbon headers on their PCB.

Connections:

ARM 20-pin Connector		10-Pin / TC2050 Footprint (JTAG Mode)	10-Pin / TC2050 Footprint (SWD Mode)
1 VCC	2 NC	1 VCC	1 VCC
3 nTRST	4 GND	2 TMS	2 SWDIO
5 TDI	6 GND	3 GND	3 GND
7 SWDIO/TMS	8 GND	4 TCK	4 SWCLK
9 SWCLK/TCLK	10 GND	5 GND	5 GND
11 RTCK	12 GND	6 TDO	6 SWO
13 SWO/TDO	14 GND	7 (Not used)	7 RTCLK
15 RESET	16 GND	8 TDI	8 (Not used)
17 NC	18 GND	9 (Not used)	9 * nTRST if R1 fitted
19 NC	20 GND	10 RESET	10 RESET

* Pin 9 of ARM 10-pin JTAG and SWD is traditionally GND. To optionally supply the nTRST signal to this pin solder a zero-Ohm 0805 SMT resistor (or jumper wire) on the back of the adaptor board. This allows access to all of the active signals traditionally supplied on the 20-pin header.

Visit www.Tag-Connect.com for technical support and product info.

TC2050-IDC Plug-of-Nails™ Connectors are protected by U.S. Patent No. 7,878,834. International Patent Pending