



Chipsmall Limited consists of a professional team with an average of over 10 year of expertise in the distribution of electronic components. Based in Hongkong, we have already established firm and mutual-benefit business relationships with customers from,Europe,America and south Asia,supplying obsolete and hard-to-find components to meet their specific needs.

With the principle of “Quality Parts,Customers Priority,Honest Operation,and Considerate Service”,our business mainly focus on the distribution of electronic components. Line cards we deal with include Microchip,ALPS,ROHM,Xilinx,Pulse,ON,Everlight and Freescale. Main products comprise IC,Modules,Potentiometer,IC Socket,Relay,Connector.Our parts cover such applications as commercial,industrial, and automotives areas.

We are looking forward to setting up business relationship with you and hope to provide you with the best service and solution. Let us make a better world for our industry!



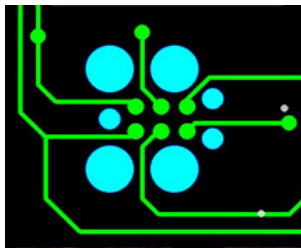
Contact us

Tel: +86-755-8981 8866 Fax: +86-755-8427 6832

Email & Skype: info@chipsmall.com Web: www.chipsmall.com

Address: A1208, Overseas Decoration Building, #122 Zhenhua RD., Futian, Shenzhen, China



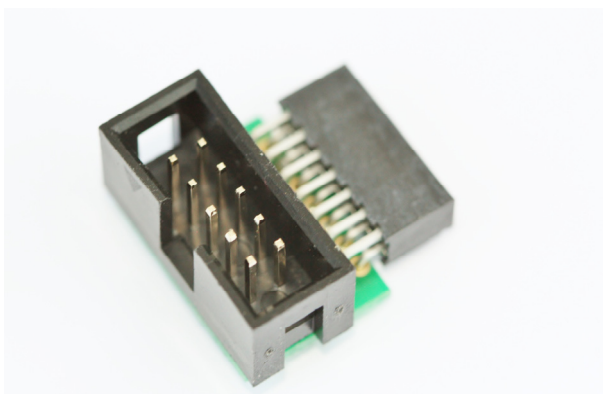
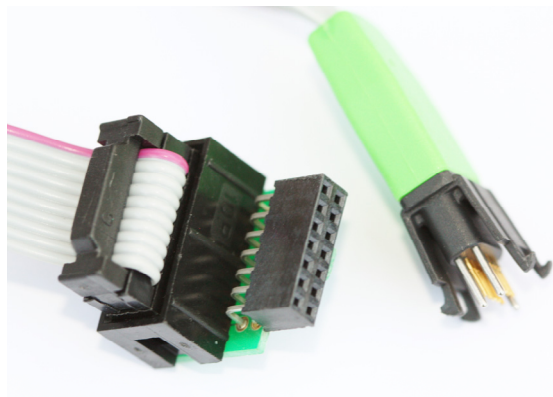


Tag-Connect



TC2050-XILINX Adaptor for Xilinx Platform Cable

Allows Xilinx Platform Cable II and compatible programmers to use TC2050-IDC Plug-of-Nails™ Cables.



(Picture with Cable for illustrational use only - TC2050-IDC Cable not included)

Tag-Connect - Save Cost and Space on Every Board!

The TC2050-XILINX is an adaptor designed to be plugged into the 2mm 14-pin Header found on Xilinx's Platform Cable II and compatible programmers. Although primarily intended for use with our patented TC2050-IDC Plug-of-Nails™ Cables, this adaptor may be useful to people wishing to use a 10-pin 0.1" ribbon header on their PCB.

Xilinx Platform Cable 2mm Connector		TC2050-IDC 0.1" Header (TC2050 board footprint)	
1 NC	2 VREF	1 VREF	2 TMS/SS/PROG
3 GND	4 TMS/SS/PROG	3 GND	4 TCK/SCLK/CCLK
5 GND	6 TCK/SCLK/CCLK	5 GND	6 TDO/MISO/DONE
7 GND	8 TDO/MISO/DONE	7 GND	8 TDI/MOSI/DIN
9 GND	10 TDI/MOSI/DIN	9 PGND	10 HALT/WP/INIT
11 GND	12 NC		
13 PGND	14 HALT/WP/INIT		

Note: Xilinx supply and recommend use of a 6" ribbon cable with their Platform Cable II.
To ensure signal integrity you may wish to consider reducing the length of the TC2050-IDC ribbon cable.

For technical support and product information please visit: www.Tag-Connect.com

TC2050-IDC Plug-of-Nails™ Connectors are protected under U.S. Patent No. 7,878,834. International Patent Pending