



Chipsmall Limited consists of a professional team with an average of over 10 year of expertise in the distribution of electronic components. Based in Hongkong, we have already established firm and mutual-benefit business relationships with customers from,Europe,America and south Asia,supplying obsolete and hard-to-find components to meet their specific needs.

With the principle of “Quality Parts,Customers Priority,Honest Operation,and Considerate Service”,our business mainly focus on the distribution of electronic components. Line cards we deal with include Microchip,ALPS,ROHM,Xilinx,Pulse,ON,Everlight and Freescale. Main products comprise IC,Modules,Potentiometer,IC Socket,Relay,Connector.Our parts cover such applications as commercial,industrial, and automotives areas.

We are looking forward to setting up business relationship with you and hope to provide you with the best service and solution. Let us make a better world for our industry!



Contact us

Tel: +86-755-8981 8866 Fax: +86-755-8427 6832

Email & Skype: info@chipsmall.com Web: www.chipsmall.com

Address: A1208, Overseas Decoration Building, #122 Zhenhua RD., Futian, Shenzhen, China



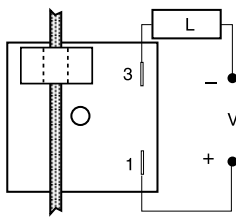
TCS SERIES

Current Sensor

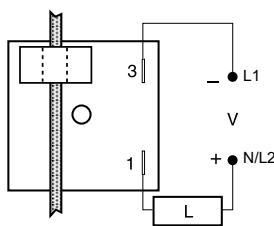


Wiring Diagram

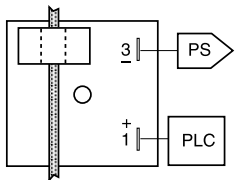
POSITIVE SWITCHING



NEGATIVE SWITCHING

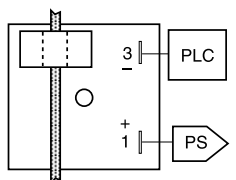


SINKING



L = Load
V = Voltage
PS = Power Supply
PLC = PLC Digital Input Module

SOURCING



Monitored AC conductor must be insulated.

Description

The TCS Series is a low cost method of go/no go current detection. It includes a solid-state output to sink or source current when connected directly to a standard PLC digital input module. Its normally open or normally closed output can also be used to control relays, lamps, valves, and small heaters rated up to 1A steady, 10A inrush. The TCS is self-powered (no external power required to operate the unit) and available with an adjustable actuation range of 2 - 20A or factory fixed actuation points from 2 - 45A.

Operation

Normally Open: When a current equal to or greater than the actuate current is passed through the toroidal sensor, the output closes. When the current is reduced to 95% of the actuate current or less, the output opens.

Normally Closed: When the current through the toroid is equal to or greater than the actuate current, the output opens. When the current is reduced below 95% of the actuate current, the output closes. To increase sensitivity, multiple turns may be made through the TCS's toroidal sensor. The trip point range is divided by the number of turns through the toroidal sensor to create a new range. When using an external CT, select a 2VA, 0-20A output CT rated for the current to be monitored. Select TCS adjustment range 0. Pass one secondary wire lead through the TCS' toroid and connect the secondary leads together.

Features & Benefits

FEATURES	BENEFITS
Self powered	No control voltage is required to operate the unit
Totally solid state and encapsulated	No moving parts to arc and wear out over time and encapsulated to protect against shock, vibration, and humidity
Can connect directly to PLC	Solid state output to sink or source current can be connected directly to a standard PLC digital input module
1A steady, 10A inrush solid-state output	Provides 100 million operations in typical conditions
Complete isolation between sensed current and control circuit	Allows you to monitor a load in a separate electrical system

Ordering Information

MODEL	OUTPUT VOLTAGE	ACTUATE CURRENT	OUTPUT FORM	MODEL	OUTPUT VOLTAGE	ACTUATE CURRENT	OUTPUT FORM
TCSG2A	3 to 50VDC	Fixed, 2A	Normally open	TCSH2B	24 to 240VAC	Fixed, 2A	Normally closed
TCSGAA	3 to 50VDC	2-20A adjustable	Normally open	TCSH5B	24 to 240VAC	Fixed, 5A	Normally closed
TCSGAB	3 to 50VDC	2-20A adjustable	Normally closed	TCSHAA	24 to 240VAC	2-20A adjustable	Normally open
TCSH2A	24 to 240VAC	Fixed, 2A	Normally open	TCSHAB	24 to 240VAC	2-20A adjustable	Normally closed

If you don't find the part you need, call us for a custom product 800-843-8848

TCS SERIES

Accessories



P1023-6 Mounting bracket
The 90° orientation of mounting slots makes installation/removal of modules quick and easy.



P1015-64 (AWG 14/16) Female Quick Connect
These 0.25 in. (6.35 mm) female terminals are constructed with an insulator barrel to provide strain relief.



P1015-18 Quick Connect to Screw Adapter
Screw adapter terminal designed for use with all modules with 0.25 in. (6.35 mm) male quick connect terminals.

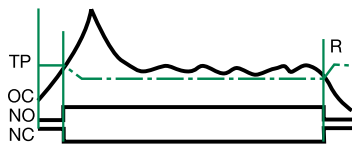


C103PM (AL) DIN Rail
35 mm aluminum DIN rail available in a 36 in. (91.4 cm) length.



P1023-20 DIN Rail Adapter
Allows module to be mounted on a 35 mm DIN type rail with two #10 screws.

Function Diagram



TP = Trip Point
OC = Monitored Current
NO = Normally Open Output
NC = Normally Closed Output
R = Reset

Specifications

Sensor Type	Toroid, through hole wiring, alternating current, monitored wire must be properly insulated
Current to Actuate	Adjustable: - 2 - 20A, guaranteed range Fixed: - 2 - 45A, +0/-20%
Reset Current	≅ 95% of the actuate current
Maximum Allowable Current	Steady - 50A turns Inrush - 300A turns for 10s
Actuate Current vs. Temp. & Voltage	≤ ±5%
Response Times	Overcurrent - ≤ 200ms Undercurrent - ≤ 1s
Burden Output Type	< 0.5VA
Form Rating Voltage	Solid state NO or NC 1A steady, 10A inrush AC - 24 to 240VAC +10/-20% DC - 3 to 50VDC
Voltage Drop	AC NO & NC - ≅ 2.5V DC NO & NC - ≅ 1.2V
Protection Circuitry	Encapsulated
Dielectric Breakdown	≥ 2000V RMS terminals to mounting surface
Insulation Resistance	≥ 100 MΩ
Mechanical Mounting Dimensions	Surface mount with one #10 (M5 x 0.8) screw H 50.8 mm (2"); W 50.8 mm (2"); D 44.5 mm (1.75")
Termination	0.25 in. (6.35 mm) male quick connect terminals (2)
Sensor Hole	0.36 in. (9.14 mm) for up to #4 AWG (21.1 mm ²) THHN wire
Environmental Operating/Storage Temperature	-20° to 60°C / -40° to 85°C
Humidity	95% relative, non-condensing
Weight	≅ 2.6 oz (74 g)