



Chipsmall Limited consists of a professional team with an average of over 10 year of expertise in the distribution of electronic components. Based in Hongkong, we have already established firm and mutual-benefit business relationships with customers from,Europe,America and south Asia,supplying obsolete and hard-to-find components to meet their specific needs.

With the principle of “Quality Parts,Customers Priority,Honest Operation,and Considerate Service”,our business mainly focus on the distribution of electronic components. Line cards we deal with include Microchip,ALPS,ROHM,Xilinx,Pulse,ON,Everlight and Freescale. Main products comprise IC,Modules,Potentiometer,IC Socket,Relay,Connector.Our parts cover such applications as commercial,industrial, and automotives areas.

We are looking forward to setting up business relationship with you and hope to provide you with the best service and solution. Let us make a better world for our industry!



Contact us

Tel: +86-755-8981 8866 Fax: +86-755-8427 6832

Email & Skype: info@chipsmall.com Web: www.chipsmall.com

Address: A1208, Overseas Decoration Building, #122 Zhenhua RD., Futian, Shenzhen, China





TRANSMISSIVE SENSORS

SURFACE-MOUNT

IN A NUTSHELL

3 mm Wide gap of 3 mm

Moisture sensitivity level (MSL) of 1
Surface-mount package
Rugged, single piece construction

Output current of 1.6 mA

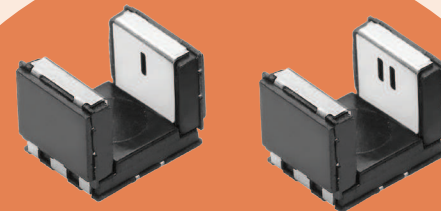
1.6 mA

Compact size, 5.5 mm x 4.0 mm x 4.0 mm
Automotive qualified, AEC-Q101

9 μs Rise time of 9 μs, typical

Deep slot for turn and push function

Operating temperature up to +125°C



TCPT1350X01 / TCUT1350X01



TCPT1600X01 / TCUT1600X01

APPLICATIONS

- Gear shift
- Ignition lock
- Adaptive headlight control
- Climate control knobs
- Latches
- Simple encoders
- Switches
- Motor speed and travel distance



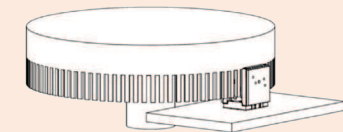
AUTOMOTIVE

COMPETITIVE ADVANTAGE

- Extremely high operating temperature
- Package design ensures alignment of emitter and detector
- High photo current output allows lower forward current of emitter



Part Number	TCPT1350X01	TCUT1350X01	TCPT1600X01	TCUT1600X01
Single Channel	•		•	
Dual Channel		•		•
Slot Depth	2.8	2.8	4.5	4.5
L x W x H	5.5 mm x 4 mm x 4 mm		5.5 mm x 4 mm x 5.7 mm	
Function	Presence of object determines speed of turn	Determines speed and direction of turn	Turn and push function presence of object determines speed of turn	Turn and push function determines speed and direction of turn
Gap	3 mm			
Operating Temperature	-40 °C to +125 °C		-40 °C to +105 °C	
Output Current	1.6 mA at I _F = 15 mA			
On / Off Time	9 μs, 16 μs			



How it works: simple encoder drawings

