



Chipsmall Limited consists of a professional team with an average of over 10 year of expertise in the distribution of electronic components. Based in Hongkong, we have already established firm and mutual-benefit business relationships with customers from,Europe,America and south Asia,supplying obsolete and hard-to-find components to meet their specific needs.

With the principle of “Quality Parts,Customers Priority,Honest Operation,and Considerate Service”,our business mainly focus on the distribution of electronic components. Line cards we deal with include Microchip,ALPS,ROHM,Xilinx,Pulse,ON,Everlight and Freescale. Main products comprise IC,Modules,Potentiometer,IC Socket,Relay,Connector.Our parts cover such applications as commercial,industrial, and automotives areas.

We are looking forward to setting up business relationship with you and hope to provide you with the best service and solution. Let us make a better world for our industry!



## Contact us

Tel: +86-755-8981 8866 Fax: +86-755-8427 6832

Email & Skype: info@chipsmall.com Web: www.chipsmall.com

Address: A1208, Overseas Decoration Building, #122 Zhenhua RD., Futian, Shenzhen, China





# **TE3124**

## **PRINTER**

### **THERMAL TRANSFER**

### **PRINTER**

## **TECHNICAL DATASHEET**

**TTDS-213 issue 5, May 2015**

The TE3124 printer is a robust 24 hour duty cycle, industrial computer-driven 600dpi thermal transfer printer. Specially designed to print on a wide range of TE Connectivity (TE) labels, cable markers, and identification marker sleeves. Recommended when a high resolution of print is essential.

**Features**

- High accuracy printing
- Easy to use
- Light weight
- Small footprint
- Easy to fit accessories
- High definition for 3D barcodes & graphics

**Applications**

- Office environment
- Light Industrial environment

**Approvals / Declarations**

- CE
- FCC Class A
- CB
- UL
- GOST
- CCC

**Environmental**

- Further information and a downloadable declaration covering RoHS and REACH compliance can be found at the 'TE Product Compliance Support Centre':

<http://www.te.com/en/resources/product-compliance.html>

**Specifications**

The printer's 600dpi resolution combined with recommended media and Thermal Transfer ribbons, meet all relevant TE RW performance specifications.

Print quality and print performance can only be guaranteed when specific TE printer and ribbons are used.

The current list of printers and ribbons can be found in TE document 411-121005 'Identification Printer Product Ribbon Matrix'. This document can be found at the TE document centre:

<http://www.te.com/commerce/DocumentDelivery/DDEController>

**PRINTER ORDERING INFORMATION**

DESCRIPTION	PART NUMBER
TE3124-PRINTER	CC9352-000

**PRINTER PROPERTIES**

**PERFORMANCE**

PRINT SPEED	30, 40, 50, 75, 100mm/s. (1, 1.5, 2, 3, 4 in/s)
PRINT WIDTH MAX:	105.6mm (4.16 in)
PRINT DEFINITION:	600 dpi Thermal Transfer
LABEL WIDTH	4 to 106mm (0.16 to 4.2 in), 116mm (4.6 in) backing paper width
LABEL HEIGHT	5mm (0.2 in) minimum to 1,000mm (39.4 in) maximum
MEDIA ROLL CAPACITY	205mm (8 in) Outside Diameter, inside core diameter 38 – 100mm (1.5 – 4 in)
INK RIBBONS	25mm (1 inch) core, ink inside or outside, variable length up to 500M (1640 ft)
CUT MODE	Cutter & Perforator available as accessories. Cut length up to >5mm. Up to 120 cuts/min
SENSOR	Variable position Gap & Reflective (automatic calibration)
ELECTRICAL REQUIREMENTS	100 to 240V - 50/60Hz, PFC
OPERATING TEMPERATURE	+5°C to +40°C (+41°F to +104°F).
OPERATING HUMIDITY	10% to 85% non-condensing RH
POWER CONSUMPTION	Power save mode 9W Typical 45W / Max 65W
PHYSICAL CHARACTERISTICS	Depth: 446mm (17.5 inches) Height: 274mm (10.8 inches) Width: 242mm (9.5 inches) Weight: 9kg (19.8 lb)
PERFORATOR/CUTTER	Maximum physical product width 110mm (4.3 in). Cuts/minute length up to 120 cuts, 150 perforations Cutting length >5mm (0.2 in)
INTERFACES	USB 2.0 High speed slave for PC connection at the rear of the printer USB master at rear of the printer X2 RS232 C 1.200 up to 230.400 Baud rate / 8 Bit Ethernet 10 / 100 Base T, LPD, Raw IP-Printing, ftp-Printing, DHCP, HTTP, FTP, SMTP, SNMP, TIME, Zeroconf, mDNS, SOAP
ELECTRONICS	RAM 64MB, Processor speed 266MHz, Memory IFFS flash 8MB

**PRINTER SPARE PARTS ORDERING INFORMATION**

<b>600 dpi Printhead</b>	
Description:	TTC-PRINTER-PRINthead-600
Part number	CP3963-000
<b>Drive roller</b>	
Part number	TTC-PRINTER-ROLLER
Description:	CP3965-000
<b>Media Sensor</b>	
Description:	TTC-PRINTER-2000/3000-MEDIA SENSOR
Part number	CN8299-000

**PRINTER ACCESSORY ORDEING INFORMATION**

Cutter	
Description:	TTC-PRINTER-CUTTER
Part number:	ED4096-000
Perforator:	
Description:	TTC-PRINTER-PERFORATOR
Part number:	ED4095-000
Metal Cover	
Description:	TE3124-METAL-COVER
Part number:	EC9823-000
Universal reel holder	
Description:	PRINTER-UNIVERSAL-REEL-HOLDER
Part number:	EC9926-000



TE3124 fitted with, metal cover and Cutter/Perforator

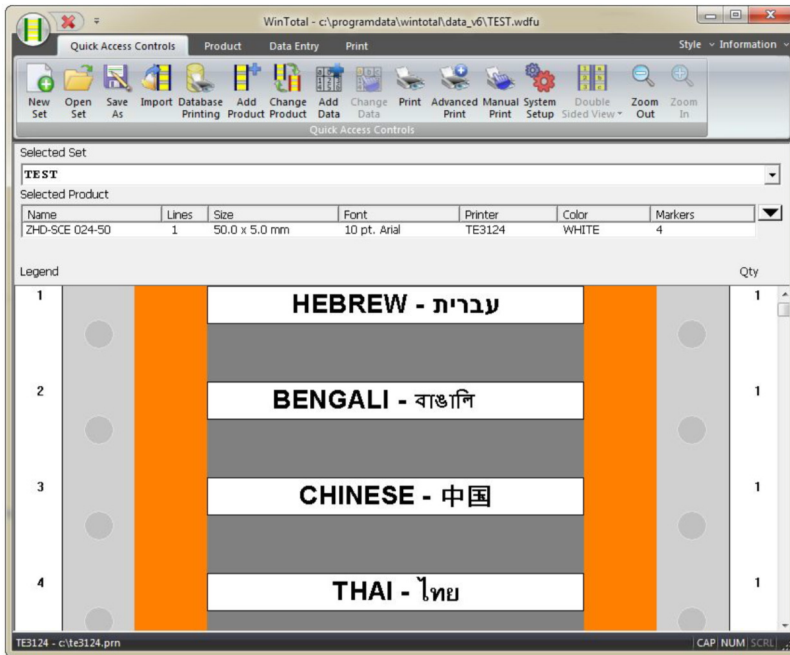


TE3124 with Universal REEL HOLDER

**SOFTWARE ORDERING INFORMATION**

WINTOTAL 6 (Dongle)	
Description	WINTOTAL-6-DONGLE
Part number	EC9816-000
WINTOTAL 5 (Dongle)	
Description	WINTOTAL-5-DONGLE
Part number	ED4097-000
Printeasy 5 Express	
Description	PEP-5-Express
Part number	CC6161-000
Printeasy 5 Pro	
Description	PEP-5-Pro
Part number	CC6174-000
Printeasy 5 Suite	
Description	PEP-5-Suite
Part number	CC6178-000

SOFTWARE



Cable Markers are fully supported by WINTOTAL and PrintEasy label printing software, available from the TE product store:

<http://www.te.com/en/general/label-printing-software.html>

Contact a TE representative for further information

te.com

TE Connectivity, TE Connectivity (logo) and Every Connection Counts are trademarks. All other logos, products and/or company names referred to herein might be trademarks of their respective owners.

The information given herein, including drawings, illustrations and schematics which are intended for illustration purposes only, is believed to be reliable. However, TE Connectivity makes no warranties as to its accuracy or completeness and disclaims any liability in connection with its use. TE Connectivity's obligations shall only be as set forth in TE Connectivity's Standard Terms and Conditions of Sale for this product and in no case will TE Connectivity be liable for any incidental, indirect or consequential damages arising out of the sale, resale, use or misuse of the product. Users of TE Connectivity products should make their own evaluation to determine the suitability of each such product for the specific application.

© 2015 TE Connectivity Ltd. family of companies All Rights Reserved.