



Chipsmall Limited consists of a professional team with an average of over 10 year of expertise in the distribution of electronic components. Based in Hongkong, we have already established firm and mutual-benefit business relationships with customers from,Europe,America and south Asia,supplying obsolete and hard-to-find components to meet their specific needs.

With the principle of “Quality Parts,Customers Priority,Honest Operation,and Considerate Service”,our business mainly focus on the distribution of electronic components. Line cards we deal with include Microchip,ALPS,ROHM,Xilinx,Pulse,ON,Everlight and Freescale. Main products comprise IC,Modules,Potentiometer,IC Socket,Relay,Connector.Our parts cover such applications as commercial,industrial, and automotives areas.

We are looking forward to setting up business relationship with you and hope to provide you with the best service and solution. Let us make a better world for our industry!



## Contact us

Tel: +86-755-8981 8866 Fax: +86-755-8427 6832

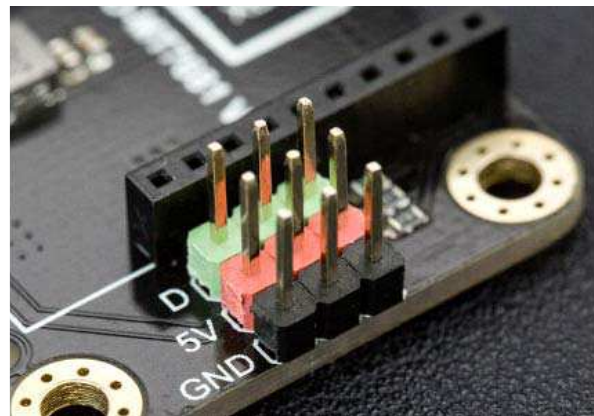
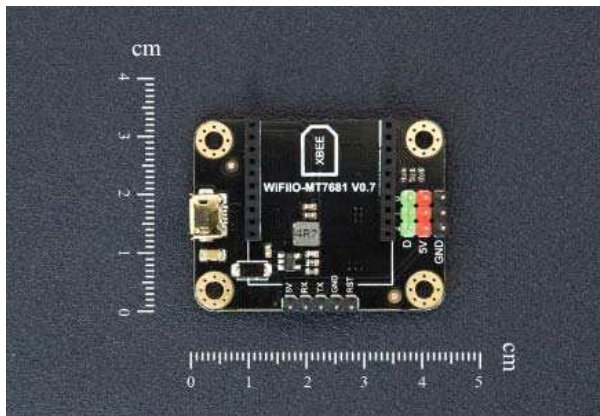
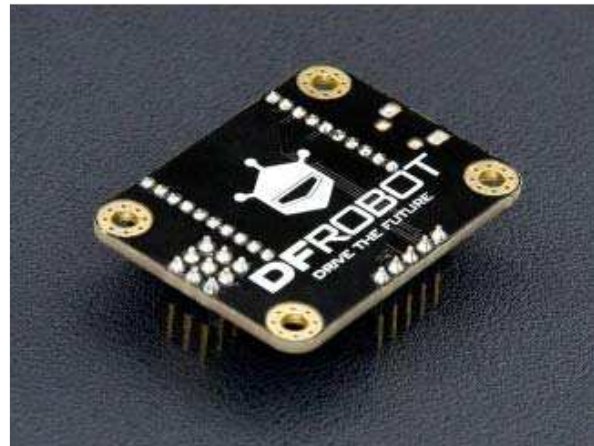
Email & Skype: info@chipsmall.com Web: www.chipsmall.com

Address: A1208, Overseas Decoration Building, #122 Zhenhua RD., Futian, Shenzhen, China





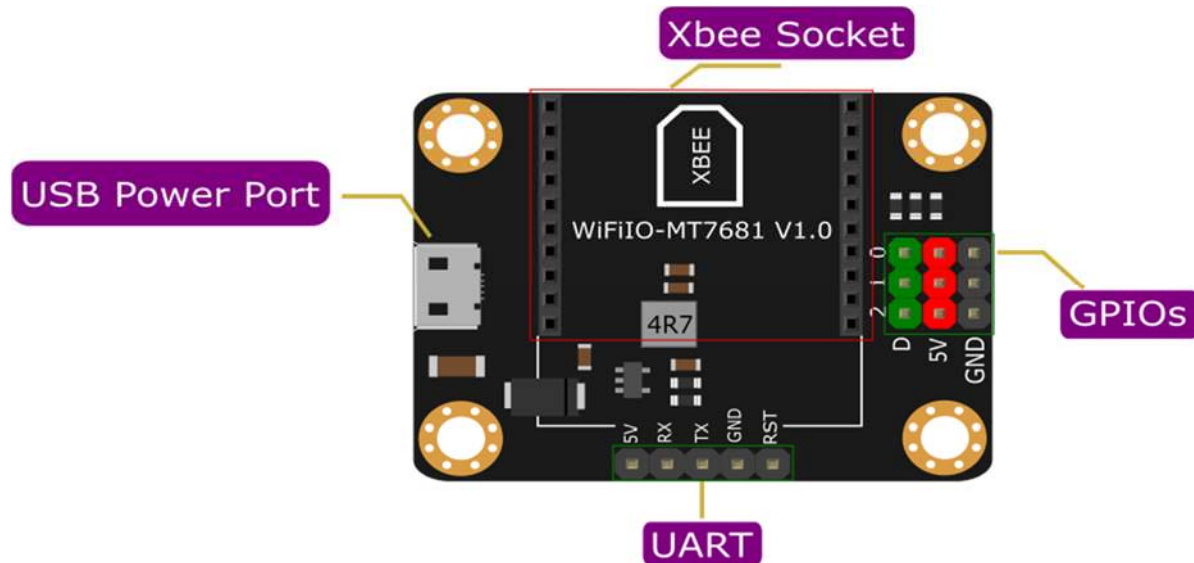
## WiFi Bee-MT7681 I/O Breakout Board SKU:TEL0103



### INTRODUCTION

The WiFi Bee I/O breakout board is a special board designed for the WiFi Bee-MT7681. It has a USB power port, a UART and three GPIO pins integrated on to the board. The use the DFRobot Gravity interface, meaning you can plug Gravity sensors and modules in directly, such as relays, buzzers, buttons, switches .etc. DFRobot also offers a variety of control options, including a mobile phone app (Android), web pages, AT commands etc. Users can choose the best control method according to their needs.

In an occasional test, we found that the I/O breakout board is not only compatible with the WiFi Bee, but also compatible with Bluno Bee and Xbee modules, and support wireless GPIO control.



## FEATURES

- Standard Xbee interface, compatible with WiFi Bee-MT7681 and other wireless modules
- Supports USB independent power supply

## SPECIFICATION

- Operating Voltage: 5V
- Interface Type: Gravity XH2.54 Digital Sensor Pin
- Dimension: 42 \* 32 \* 12 mm/ 1.65 \* 1.26 \* 0.47 inches
- Weight: 8g

## SHIPPING LIST

- WiFiBee-MT7681 IO Breakout Board x 1