



Chipsmall Limited consists of a professional team with an average of over 10 year of expertise in the distribution of electronic components. Based in Hongkong, we have already established firm and mutual-benefit business relationships with customers from,Europe,America and south Asia,supplying obsolete and hard-to-find components to meet their specific needs.

With the principle of “Quality Parts,Customers Priority,Honest Operation,and Considerate Service”,our business mainly focus on the distribution of electronic components. Line cards we deal with include Microchip,ALPS,ROHM,Xilinx,Pulse,ON,Everlight and Freescale. Main products comprise IC,Modules,Potentiometer,IC Socket,Relay,Connector.Our parts cover such applications as commercial,industrial, and automotives areas.

We are looking forward to setting up business relationship with you and hope to provide you with the best service and solution. Let us make a better world for our industry!



Contact us

Tel: +86-755-8981 8866 Fax: +86-755-8427 6832

Email & Skype: info@chipsmall.com Web: www.chipsmall.com

Address: A1208, Overseas Decoration Building, #122 Zhenhua RD., Futian, Shenzhen, China





Bluetooth Audio Receiver Module SKU: TEL0108



Introduction

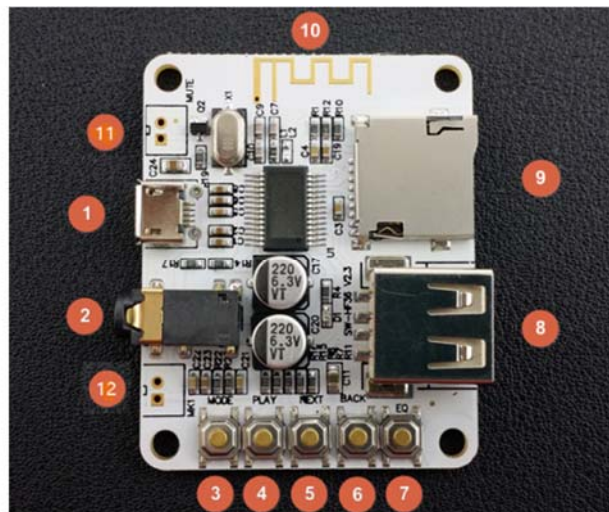
This Bluetooth Audio receiver module includes a USB port and TF card slot. With a pre-amp output, you can drive headphones or a 3W speaker directly. You can also add an active power amplifier and connect a loudspeaker. The module supports MP3, WMA, WAV and lossless FLAC audio formats. With its compact form factor and 5V DC power requirement, this is an ideal module for people who want to turn a boring old loudspeaker into a wireless bluetooth speaker. Awesome!

Specification

- Power Supply: 5V DC (Delivered via MicroUSB port)
- Audio Decoding: MP3, WMA, WAV, FLAC
- TF Card Capacity: 16GB (Max)
- Audio Input: Bluetooth, USB, TF card
- Dimensions: 40 x 50mm / 1.57 x 1.97"
- Weight: 14g

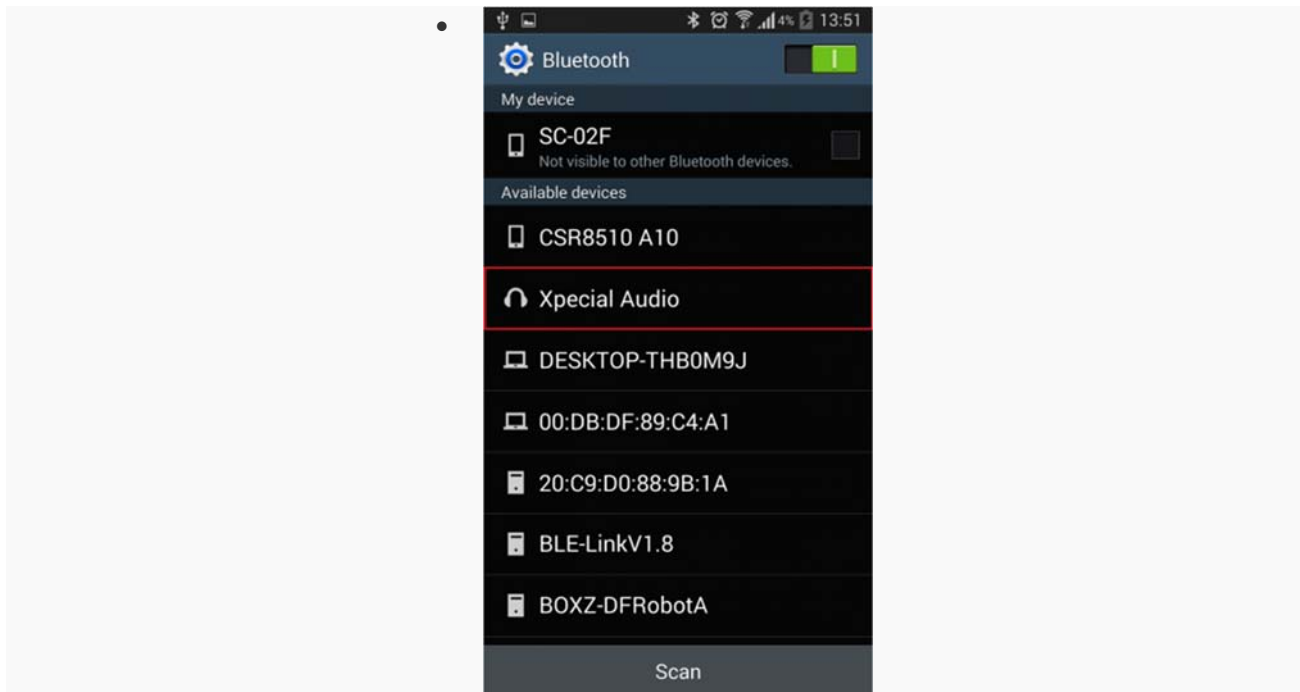
Board Overview

Function		
No.	Name	Description
1	MicroUSB	5V DC (Power Only)
2	3.5mm Headphone Jack	3.5mm Headphone Jack
3	Mode	Mode Switch: Bluetooth/TF Card/USB
4	Play	Play/Pause
5	Next	Short Press: Next Song / Long Press: Volume +
6	Back	Short Press: Previous / Long Press: Volume -
7	EQ	Equalizer
8	USB	USB Port
9	TF Slot	TF Card Max-16GB
10	Bluetooth Antenna	Bluetooth Antenna
11	MUTE	Mute Switch
12	MK1	Microphone

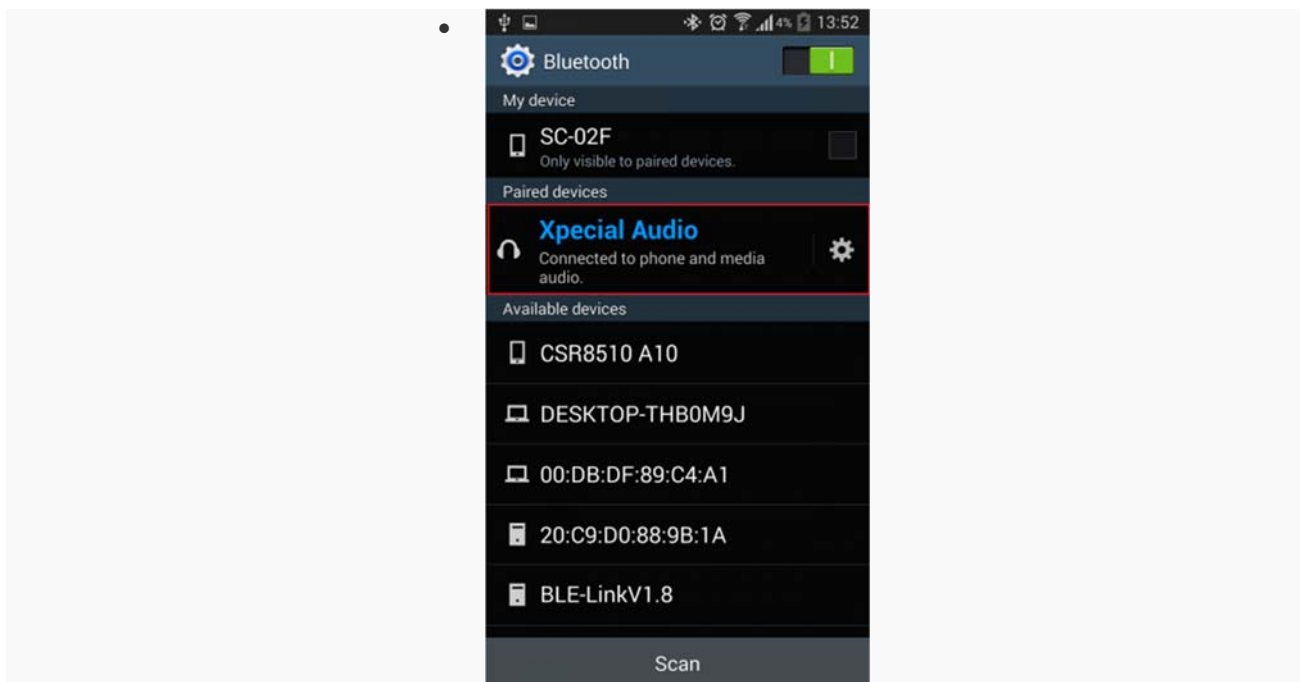


Tutorial

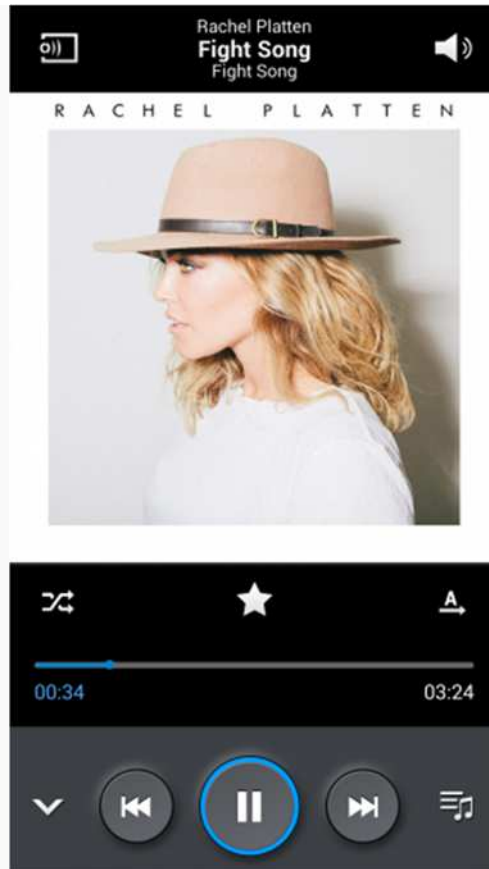
This units usage is similar to an ordinary bluetooth headset :



Search "Xpecial Audio"



Click "pair", Done!



Open the music player and enjoy your music!

For any questions, advice or cool ideas to share, please visit the **DFRobot Forum**.