



Chipsmall Limited consists of a professional team with an average of over 10 year of expertise in the distribution of electronic components. Based in Hongkong, we have already established firm and mutual-benefit business relationships with customers from,Europe,America and south Asia,supplying obsolete and hard-to-find components to meet their specific needs.

With the principle of “Quality Parts,Customers Priority,Honest Operation,and Considerate Service”,our business mainly focus on the distribution of electronic components. Line cards we deal with include Microchip,ALPS,ROHM,Xilinx,Pulse,ON,Everlight and Freescale. Main products comprise IC,Modules,Potentiometer,IC Socket,Relay,Connector.Our parts cover such applications as commercial,industrial, and automotives areas.

We are looking forward to setting up business relationship with you and hope to provide you with the best service and solution. Let us make a better world for our industry!



## Contact us

Tel: +86-755-8981 8866 Fax: +86-755-8427 6832

Email & Skype: info@chipsmall.com Web: www.chipsmall.com

Address: A1208, Overseas Decoration Building, #122 Zhenhua RD., Futian, Shenzhen, China



### Switch Housing

For screw attachment from the front.

**Material and surface:**

Housing and end caps made of stainless steel, material no. 1.4301. Blasted surface and electropolished.

**Function elements:**

Depending on the type with push button or emergency stop.

**Connection A:**

Plug M12 x 1 out of the attachment face.

**Connection B:**

Connection Cable 10 m out of the attachment face.

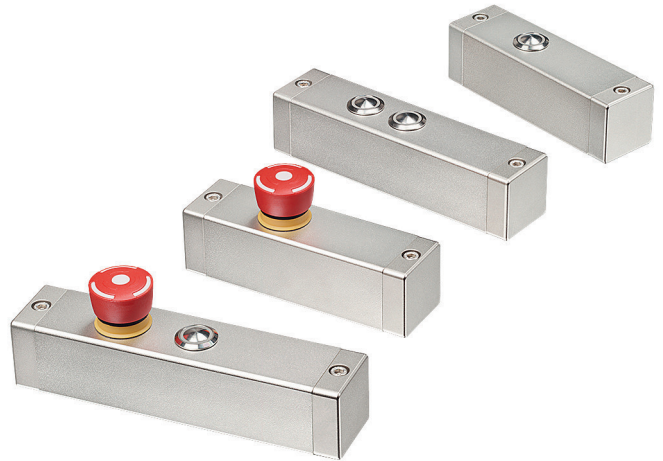
**Protection class:**



IP 65 (for version A with screwed coupling).



**Note:**

On request customized variants are possible.

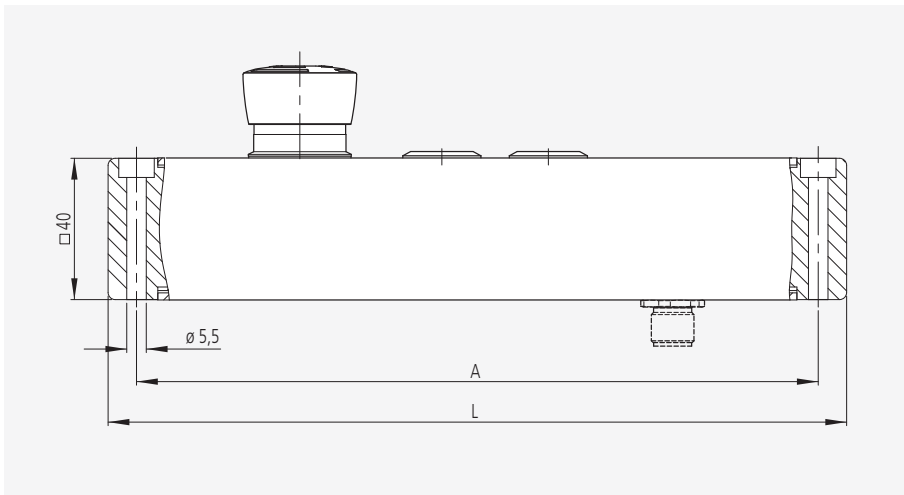
*screw attachment from the front*



Typ	A	L	Connection	
			A Plug	B Cable
			Order no.	Order no.
<b>TG-01</b>				
1 push button	120	136	TG-01S.F120.36	TG-01K.F120.36
<b>TG-02</b>				
2 push buttons	150	166	TG-02S.F150.36	TG-02K.F150.36
<b>TG-20</b>				
Emergency stop	120	136	TG-20S.F120.36	TG-20K.F120.36
<b>TG-04</b>				
Emergency stop + 1 push buttons	160	176	TG-04S.F160.36	TG-04K.F160.36
<b>TG-05</b>				
Emergency stop + 2 push buttons	190	206	TG-05S.F190.36	TG-05K.F190.36

Handle accessories			
Coupling with cable			
8-pole (M12 x 1)		12-pole (M12 x 1)	
	L	Order no.	Order no.
	10 m	FZ-KS.G08.10	FZ-KS.G12.10
	10 m	FZ-KS.W08.10	FZ-KS.W12.10





## Technical data

Typ	TG-01	TG-02	TG-20	TG-04	TG-05
<b>Emergency stop</b> (2 NC contacts)	-	-	WH(1) GN(3)  BN(2) YE(4)	BN(1) WH(3)  BU(2) GN(4)	BN(1) WH(3)  BU(2) GN(4)
<b>Push button 1 LED green</b> (change-over contact)	LED green GY(5) WH(1) GN(3)  PK(6) BN(2)	LED green GY(5) WH(1) GN(3)  PK(6) BN(2)	-	LED green RD(9) PK(5) BK(7)  VT(10) YE(6)	LED green RD(9) PK(5) BK(7)  VT(10) YE(6)
<b>Push button 2 LED red</b> (NO contact)	-	LED rot red YE(4) BU(7)  PK(6) RD(8)	-	-	LED red GY(8) GY/PK(11)  VT(10) RD/BU(12)
<b>Emergency stop</b>	1-42 V AC/DC max. 100 mA				
<b>Push button</b>	24 V AC/DC max. 1 A				
<b>Operating voltage LED</b>	24 V DC (12 V optional)				
<b>Connection type</b>	8-pole M12 x 1			12-pole M12 x 1	
<b>Connector assignment</b> (Plug side view)					
<b>Mounting cutout</b>					