



Chipsmall Limited consists of a professional team with an average of over 10 year of expertise in the distribution of electronic components. Based in Hongkong, we have already established firm and mutual-benefit business relationships with customers from,Europe,America and south Asia,supplying obsolete and hard-to-find components to meet their specific needs.

With the principle of “Quality Parts,Customers Priority,Honest Operation,and Considerate Service”,our business mainly focus on the distribution of electronic components. Line cards we deal with include Microchip,ALPS,ROHM,Xilinx,Pulse,ON,Everlight and Freescale. Main products comprise IC,Modules,Potentiometer,IC Socket,Relay,Connector.Our parts cover such applications as commercial,industrial, and automotives areas.

We are looking forward to setting up business relationship with you and hope to provide you with the best service and solution. Let us make a better world for our industry!



Contact us

Tel: +86-755-8981 8866 Fax: +86-755-8427 6832

Email & Skype: info@chipsmall.com Web: www.chipsmall.com

Address: A1208, Overseas Decoration Building, #122 Zhenhua RD., Futian, Shenzhen, China

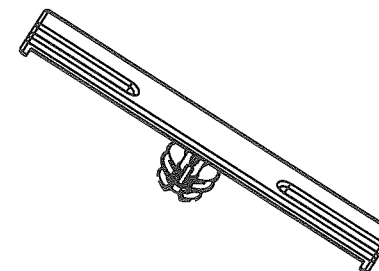
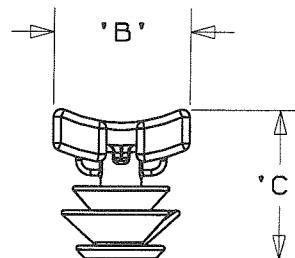
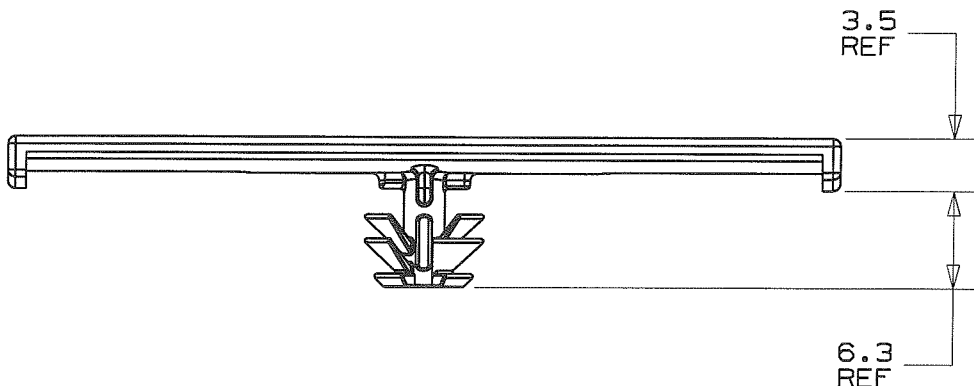
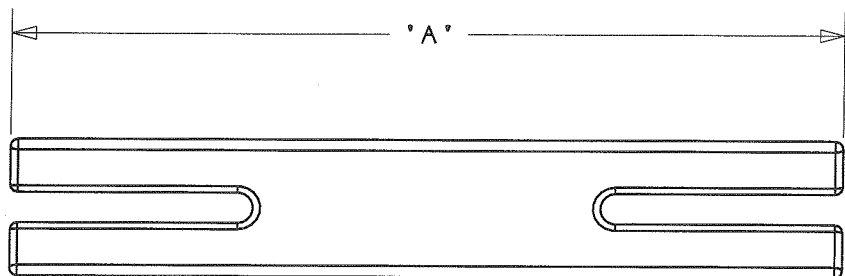


THIS COPY IS PROVIDED ON A RESTRICTED BASIS AND IS NOT TO BE USED IN ANY WAY DETRIMENTAL TO THE INTERESTS OF PANDUIT CORP.

PANDUIT PART NO.	'A'	'B'	'C'	WEIGHT grams/100 pcs
THMSC55H04	55.0	9.0	9.8	85

NOTES:

- SEE CURRENT PRICE SHEET FOR PART NUMBER SUFFIX DESIGNATION FOR PACKAGE SIZE.
- APPLICATION SPECIFICATION:
HOLE DIAMETER: 6.3 - 7.1 mm
PANEL THICKNESS: 3.4 - 3.6 mm
- MATERIAL:
-30: BLACK HEAT STABILIZED NYLON 6/6.
-39: NATURAL HEAT STABILIZED NYLON 6/6.



SCALE: 1:1

ALL DIMENSIONS ARE METRIC [mm]

CAD FILENAME/LAYERS G03601DA_DC_GB0239NX/00B

PANDUIT

CORP.

TINLEY PARK, ILLINOIS

THMSC55H04
TIE HARNESS MOUNT

UNLESS OTHERWISE SPECIFIED,
ALL DIMENSIONS ARE METRIC
TOLERANCE: ±0.5mm

REV	DATE	BY	CHK	DESCRIPTION	ECN	R	CUST	SUP
OOB	04/06/09	GDH	<i>GDH</i>	ADDED PRODUCT WEIGHT TO TABLE	GB0239NX	OOB	<i>KLN</i>	
OOA	02/11/09	GDH		INITIAL RELEASE	GB0239NX	OOA		

DRAWN BY
GDH

MAT'L:

SCALE
2:1

DATE
02/11/09

SEE NOTE 3.

DRAWING NO.

GB0239NX

DWG

A

CHK'D
KLN

SIZE