



Chipsmall Limited consists of a professional team with an average of over 10 year of expertise in the distribution of electronic components. Based in Hongkong, we have already established firm and mutual-benefit business relationships with customers from,Europe,America and south Asia,supplying obsolete and hard-to-find components to meet their specific needs.

With the principle of “Quality Parts,Customers Priority,Honest Operation,and Considerate Service”,our business mainly focus on the distribution of electronic components. Line cards we deal with include Microchip,ALPS,ROHM,Xilinx,Pulse,ON,Everlight and Freescale. Main products comprise IC,Modules,Potentiometer,IC Socket,Relay,Connector.Our parts cover such applications as commercial,industrial, and automotives areas.

We are looking forward to setting up business relationship with you and hope to provide you with the best service and solution. Let us make a better world for our industry!



Contact us

Tel: +86-755-8981 8866 Fax: +86-755-8427 6832

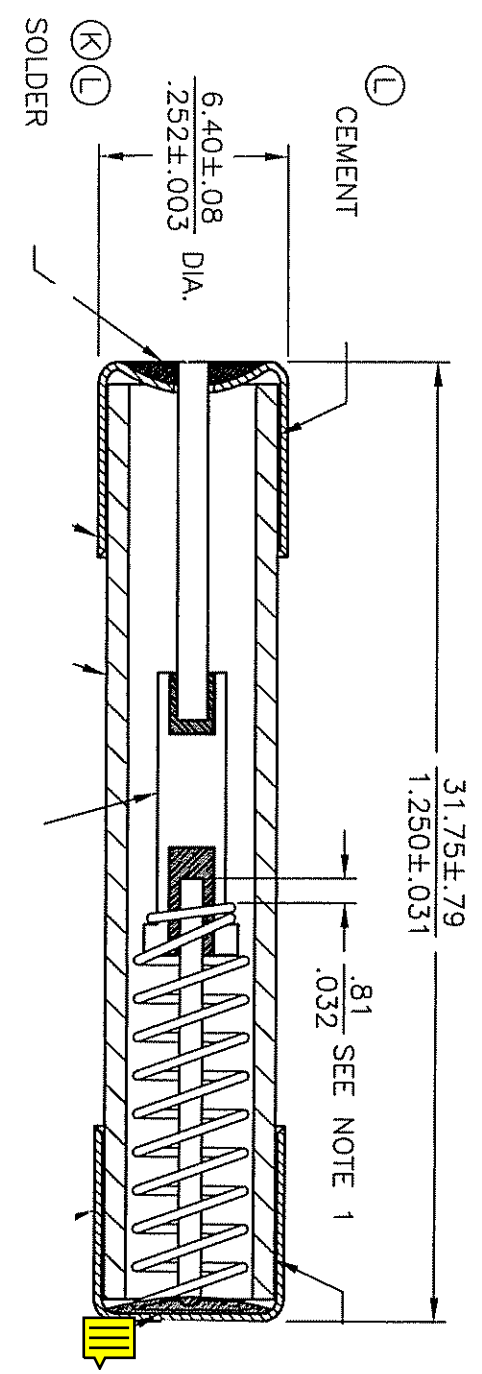
Email & Skype: info@chipsmall.com Web: www.chipsmall.com

Address: A1208, Overseas Decoration Building, #122 Zhenhua RD., Futian, Shenzhen, China



CONFIDENTIAL. THE INFORMATION CONTAINED IN THIS DOCUMENT IS THE PROPERTY OF COOPER INDUSTRIES, INC. IT IS NOT FOR PUBLIC DISCLOSURE. POSSESSION OF THE INFORMATION DOES NOT CONVEY ANY RIGHT TO LOAN, SELL OR DISCLOSE THE INFORMATION. UNAUTHORIZED REPRODUCTION OR USE OF THE INFORMATION IS PROHIBITED. THIS DOCUMENT IS TO BE RETURNED TO COOPER INDUSTRIES, INC. UPON COMPLETION OF THE PURPOSE FOR WHICH IT IS LOANED OR UPON REQUEST.

COOPER INDUSTRIES, INC.
 This is an unpublished work. The disclosure of this work is limited to select personnel. Further dissemination or disclosure to the public is PROHIBITED. This work is protected by Federal Copyright law and thereunder or reserved by Cooper Industries.



(K) (L) FERRULE
 STAMPED "BUSS TJD"

NOTES:
 1) HEATER MUST EXTEND $\frac{.81}{.032}$ FROM END OF SPRING AT ABSORBER.

(M)

SCALE		4X	UNLESS OTHERWISE SPECIFIED TOLERANCES TO BE:	
METRIC ± .3mm		INDICATES CRITICAL DIMENSION OR FEATURE		
INCHES ± .005"		ANGULAR ± 2°		
TITLE		SUP NO		
HEAT LIMITER		TJD		
DATE		DATED		
12-6-02		11-23-99		
NO		CHANGE		
TJD		N		
DWC		TCB		
ENG.		J02456		
DISTRIBUTION		56 J		
50150		St. Louis, MO 63178		
COOPER Bussmann				