



Chipsmall Limited consists of a professional team with an average of over 10 year of expertise in the distribution of electronic components. Based in Hongkong, we have already established firm and mutual-benefit business relationships with customers from,Europe,America and south Asia,supplying obsolete and hard-to-find components to meet their specific needs.

With the principle of “Quality Parts,Customers Priority,Honest Operation,and Considerate Service”,our business mainly focus on the distribution of electronic components. Line cards we deal with include Microchip,ALPS,ROHM,Xilinx,Pulse,ON,Everlight and Freescale. Main products comprise IC,Modules,Potentiometer,IC Socket,Relay,Connector.Our parts cover such applications as commercial,industrial, and automotives areas.

We are looking forward to setting up business relationship with you and hope to provide you with the best service and solution. Let us make a better world for our industry!



Contact us

Tel: +86-755-8981 8866 Fax: +86-755-8427 6832

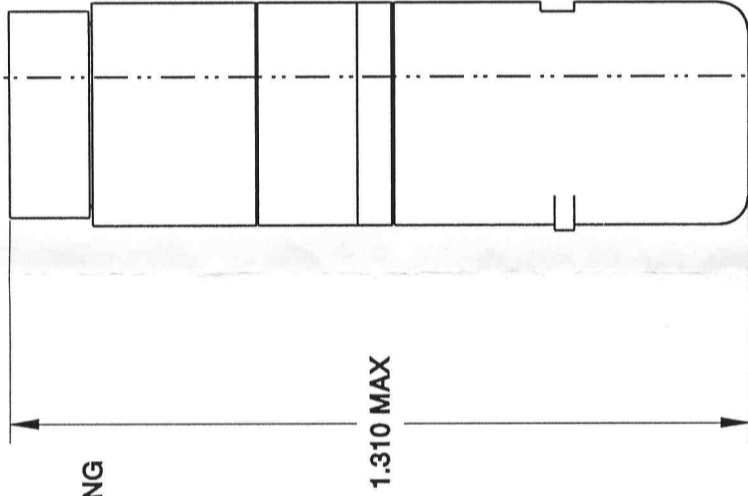
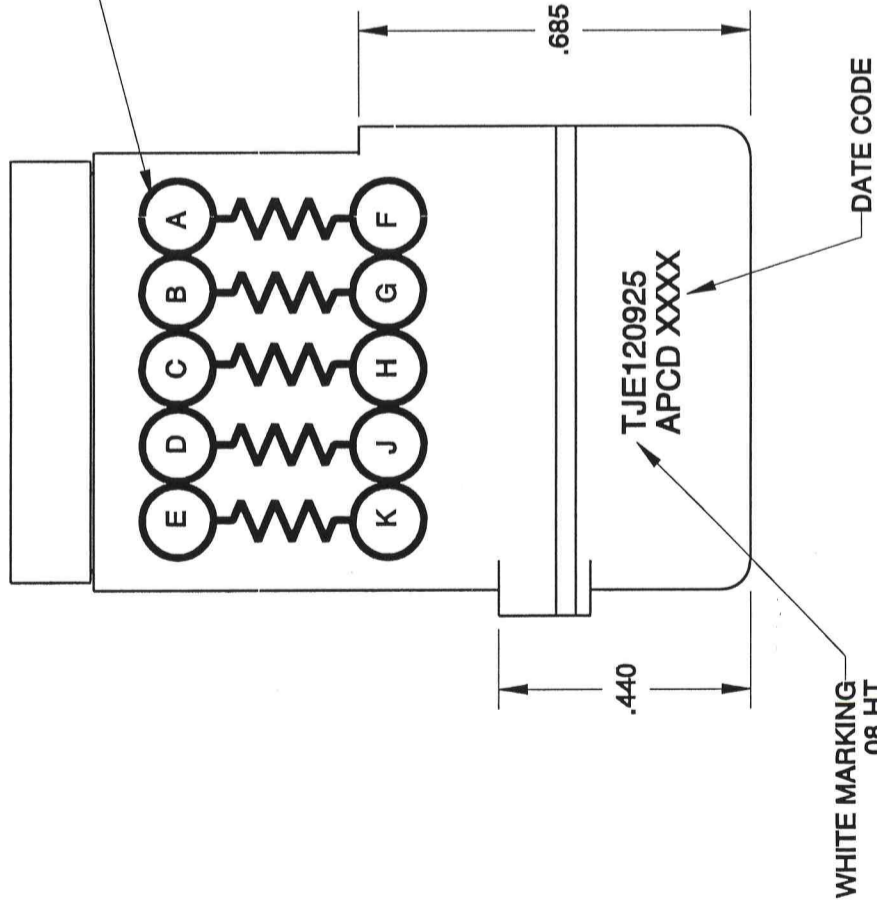
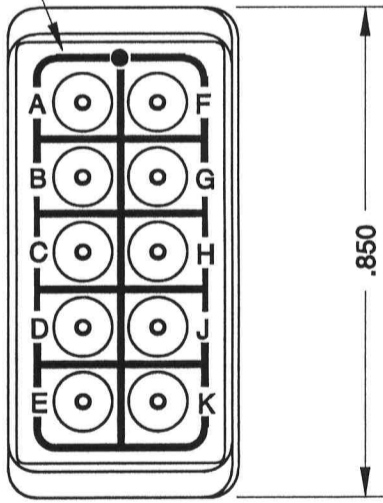
Email & Skype: info@chipsmall.com Web: www.chipsmall.com

Address: A1208, Overseas Decoration Building, #122 Zhenhua RD., Futian, Shenzhen, China

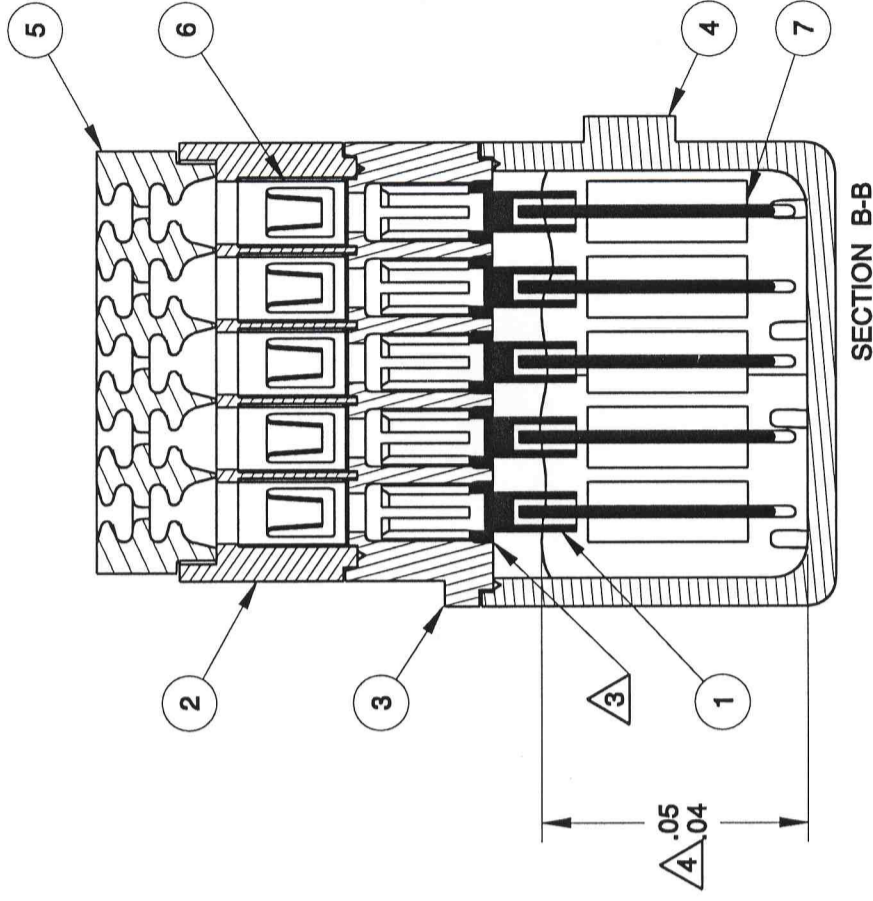


REV	ECN	DESCRIPTION	APP'D
-	5679	RELEASE	

GROMMET MARKING
COLOR: WHITE
AW-2087



- NOTES:
1. MATERIALS:
HOUSING - POLYETHERIMIDE, COLOR: BLACK.
GROMMET - SILICONE ELASTOMER, COLOR: BLUE
RESISTOR: 499Ω, 1 W, ±1%
2. MODULE SUPPLIED WITH 11 PIN CONTACTS, M39029/1-101; AND 2 SEALING PLUGS, MS24788-20.
 3. CONTACTS SHALL BE SEATED WITHIN .020 MAX BELOW AND .010 MAX ABOVE BOTTOM SURFACE OF BUS HOUSING.
 4. DOW CORNING SYLGARD 186



ID	PART #	DESCRIPTION	QTY
1	210210000	CONTACT TJE SZ 16/20	10
2	220320000	CLIP HOUSING, ELECTRONIC MODULE,	1
3	220420000	BUS HOUSING, ELECTRONIC MODULE,	1
4	220620000	COMPONENT HOUSING, ELECTRONIC MODULE,	1
5	270100200	GROMMET, SIZE 20/22 TJM	1
6	310000101	CONTACT RETAINER SIZE 20 STAINLESS STEEL	10
7	320000499	RESISTOR, 499 OHM 1W, RWR81S499FR-TR	5

Amphenol Pcd		TITLE ELECTRONIC MODULE SZ 20 RESISTOR 499 Ω 1W	
ENGR D. LANG	CHKD D. LANG	DWG NO. TJE120925	REV 1
DIMENSIONS ANSI Y14.5M UNITS: INCHES Pro/E FILE		TOLERANCES .XX ±0.01 .XXX ±0.005 ANGLES ±1.0°	
ORIGINAL NOT FOR CUSTOMER DISTRIBUTION		PROJECTION 	
THIS DOCUMENT CONTAINS PROPRIETARY INFORMATION WHICH IS THE CONFIDENTIAL PROPERTY OF AMPHENOL PCD INC., PEABODY, MA			
APPD		SCALE: 3:1 SHEET 1 OF 1	