



Chipsmall Limited consists of a professional team with an average of over 10 year of expertise in the distribution of electronic components. Based in Hongkong, we have already established firm and mutual-benefit business relationships with customers from,Europe,America and south Asia,supplying obsolete and hard-to-find components to meet their specific needs.

With the principle of “Quality Parts,Customers Priority,Honest Operation,and Considerate Service”,our business mainly focus on the distribution of electronic components. Line cards we deal with include Microchip,ALPS,ROHM,Xilinx,Pulse,ON,Everlight and Freescale. Main products comprise IC,Modules,Potentiometer,IC Socket,Relay,Connector.Our parts cover such applications as commercial,industrial, and automotives areas.

We are looking forward to setting up business relationship with you and hope to provide you with the best service and solution. Let us make a better world for our industry!



Contact us

Tel: +86-755-8981 8866 Fax: +86-755-8427 6832

Email & Skype: info@chipsmall.com Web: www.chipsmall.com

Address: A1208, Overseas Decoration Building, #122 Zhenhua RD., Futian, Shenzhen, China



TACT
SWITCHESNAVIGATION
SWITCHESPUSHBUTTON
SWITCHESTOGGLE
SWITCHESROCKER
SWITCHESSLIDE
SWITCHESSNAP-ACTION
SWITCHESDIP
SWITCHESKEYLOCK
SWITCHESROTARY
SWITCHESDETECTOR
SWITCHESCAP
OPTIONS

SERIES TL 1260 SWITCHES

TACT SWITCHES - ILLUMINATED RIGHT ANGLE



FEATURES & BENEFITS

- ▶ Illuminated
- ▶ Right angle thru-hole tact switch
- ▶ Multiple colors available

APPLICATIONS/MARKETS

- ▶ Telecommunications
- ▶ Consumer Electronics
- ▶ Audio/visual
- ▶ Medical
- ▶ Testing/instrumentation
- ▶ Computer/servers/peripherals

SPECIFICATIONS

Contact Rating:	50mA @ 12 VDC
Life Expectancy:	50,000 cycles
Contact Resistance:	100mΩ
Insulation Resistance:	100MΩ
Dielectric Strength:	500 VAC
Actuation Force:	160 gf ± 50 gf
Operating Temperature:	-20°C to 70°C
Travel:	0.20 ±.01mm

MATERIALS

Actuator:	PBT
Housing:	POM
Terminals:	Brass, silver plated
Moving Contact:	Stainless Steel, silver plated
Button:	Nylon



HOW TO ORDER

SERIES	MODEL NO.	LED	CONTACT MATERIAL	CAP	CAP COLOR
TL	1260	R = Red G = Green Y = Yellow B = Blue	Q = Silver	R = Round	BLK =Black GRN =Green RED =Red YEL =Yellow GRY =Gray

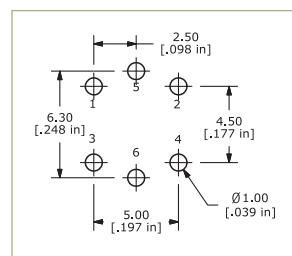
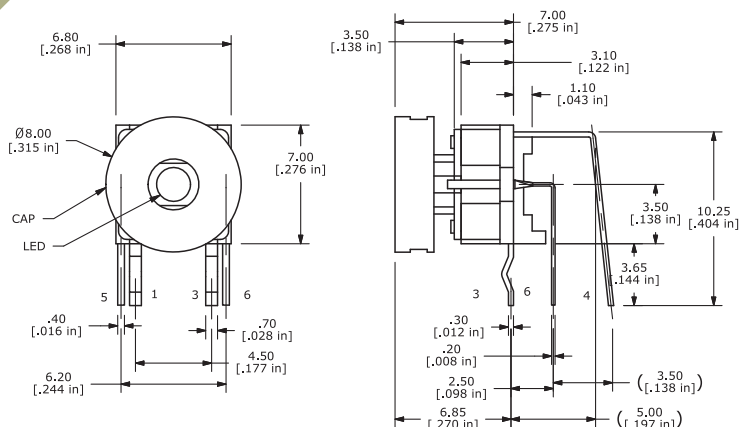


Example Ordering Number

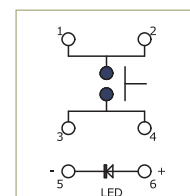
TL-1260-G-Q-R-BLK

Specifications subject to change without notice.

TL 1260



P.C. MOUNTING



SCHEMATIC

LED Specifications	Units	Blue	Green	Red	Yellow
Forward Current	mA	30	30	30	30
Forward Voltage	V	3.5-4.0	2.0-2.5	3.3-3.8	2.0-2.5
Luminous Intensity @ 20mA	mcd	230	120	50	200