



Chipsmall Limited consists of a professional team with an average of over 10 year of expertise in the distribution of electronic components. Based in Hongkong, we have already established firm and mutual-benefit business relationships with customers from,Europe,America and south Asia,supplying obsolete and hard-to-find components to meet their specific needs.

With the principle of “Quality Parts,Customers Priority,Honest Operation,and Considerate Service”,our business mainly focus on the distribution of electronic components. Line cards we deal with include Microchip,ALPS,ROHM,Xilinx,Pulse,ON,Everlight and Freescale. Main products comprise IC,Modules,Potentiometer,IC Socket,Relay,Connector.Our parts cover such applications as commercial,industrial, and automotives areas.

We are looking forward to setting up business relationship with you and hope to provide you with the best service and solution. Let us make a better world for our industry!



Contact us

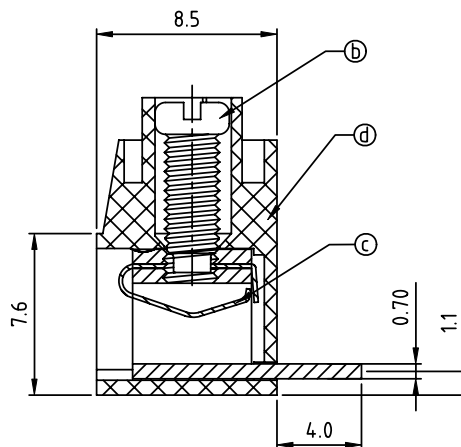
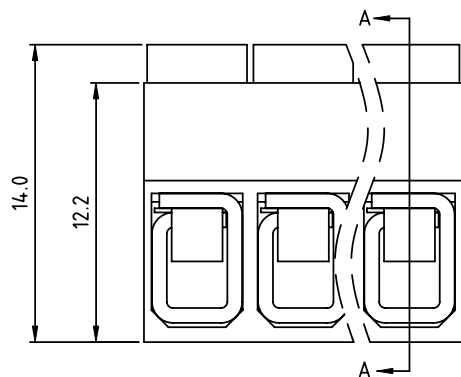
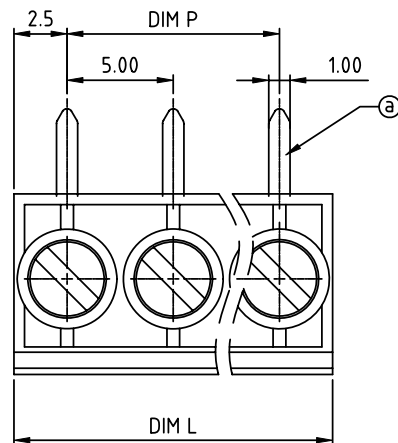
Tel: +86-755-8981 8866 Fax: +86-755-8427 6832

Email & Skype: info@chipsmall.com Web: www.chipsmall.com

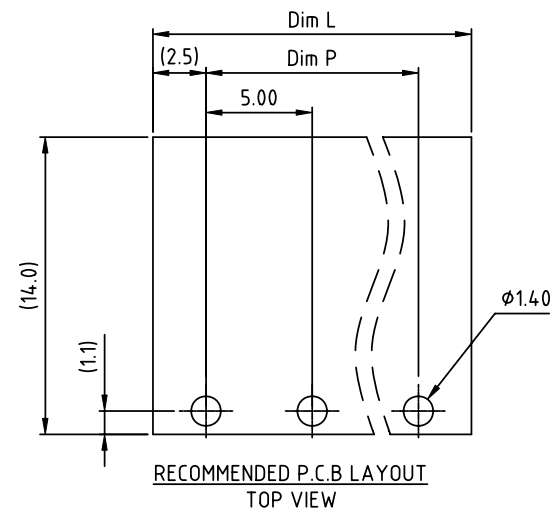
Address: A1208, Overseas Decoration Building, #122 Zhenhua RD., Futian, Shenzhen, China



PRODUCT NUMBER	PITCH
TLxx05x000J0G	5.00 mm




SECTION A-A



Material

- Item ① Terminal body: Brass stamping, Tin plated
- Item ② Terminal screw: Steel Zinc plating "-" slot type
- Item ③ Wire guard: PhBz, Tin plated
- Item ④ Terminal (housing): Thermoplastic (UL94V-0)

Electrical cULus

- Voltage rating: 250VAC
- Current rating: 15A
- Wire range:
 - Solid wire(AWG): 12-22
 - Stranded wire(AWG): 12-22
- Torque(Lb-In): 3.5
- Screw: M2.5
- Wire strip length: 6-7mm
- Withstanding Voltage: 1.6KV
- Operating temperature: -40°C to +115°C
- Soldering temperature: 260°C±5°C/5 Sec
- Safety Approval: 

N = Number of poles
 Dim L = N x 5.0
 Dim P = (N-1) x 5.0

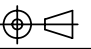
Poles	Dim L	Dim P
2-6p	±0.15	±0.10
7-12p	±0.20	±0.20
13-18p	±0.30	±0.25
19-24p	±0.40	±0.30

PART NO.: TL xx 05 x 0 00J0 G

Solid Block
 No. of poles
 02 2 poles
 03 3 poles
 ...
 24 24 poles

Body Color
 0 Black (RAL9005)
 2 Red (RAL3001/D)
 3 Orange(RAL2011/P)
 4 Yellow(RAL1018/A)
 5 Green(RAL6018/T)
 6 Blue (RAL5015/A)
 8 Grey(RAL7035/D)
 9 White(RAL1102)
 C Green(RAL6018/U)

RoHS compliant
 (lead<4%)
 In copper Alloy

mat'l. code				surface	tolerance	projection	product family			
ltr ecn no dr date				ASME Y14.5	ASME Y14.5		TERMINAL BLOCK			
				tolerances unless otherwise specified		MM	title			
				angles	X.±0.5		TERMINAL BLOCK			
				flatness	X.X±0.3		WIRE PROTECTOR, 90D WIRE INLET			
				X*±1°	X.XX±0.1	scale	dwg no			
				dr	EVIN ZHONG	040114	sheet 1 of 1			
				enr	EVIN ZHONG	040114	size			
				chr	HANKE FENG	040114	TLxx05x000J0G			
				appd	SHI JUN	040114	A4			
sheet index				revision	A		type			
sheet				1			CUSTOMER Drawing			