



Chipsmall Limited consists of a professional team with an average of over 10 year of expertise in the distribution of electronic components. Based in Hongkong, we have already established firm and mutual-benefit business relationships with customers from,Europe,America and south Asia,supplying obsolete and hard-to-find components to meet their specific needs.

With the principle of “Quality Parts,Customers Priority,Honest Operation,and Considerate Service”,our business mainly focus on the distribution of electronic components. Line cards we deal with include Microchip,ALPS,ROHM,Xilinx,Pulse,ON,Everlight and Freescale. Main products comprise IC,Modules,Potentiometer,IC Socket,Relay,Connector.Our parts cover such applications as commercial,industrial, and automotives areas.

We are looking forward to setting up business relationship with you and hope to provide you with the best service and solution. Let us make a better world for our industry!



Contact us

Tel: +86-755-8981 8866 Fax: +86-755-8427 6832

Email & Skype: info@chipsmall.com Web: www.chipsmall.com

Address: A1208, Overseas Decoration Building, #122 Zhenhua RD., Futian, Shenzhen, China

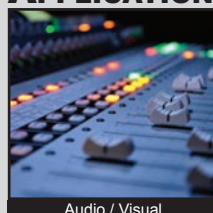


TL3210 SERIES TACT SWITCH

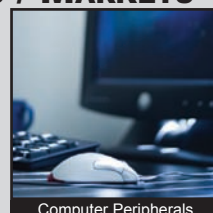
ANTI-VANDAL SWITCHES
DETECTOR SWITCHES
DIP SWITCHES
KEYLOCK SWITCHES
NAVIGATION SWITCHES
PUSHBUTTON SWITCHES
ROCKER SWITCHES
ROTARY SWITCHES
SLIDE SWITCHES
SNAP ACTION SWITCHES
TACTILE SWITCHES
TOGGLE SWITCHES
CAP OPTIONS



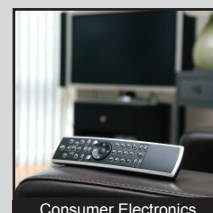
APPLICATIONS / MARKETS



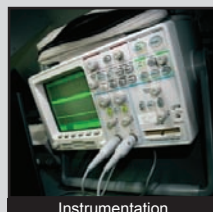
Audio / Visual



Computer Peripherals



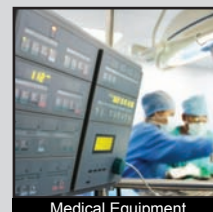
Consumer Electronics



Instrumentation



Telecommunication



Medical Equipment

RoHS

SPECIFICATIONS

Electrical Rating: 50mA @ 12VDC
Life Expectancy: 100,000 Cycles
Contact Resistance: 500mΩ Max.
Insulation Resistance: 100 MΩ Min. at 100VDC
Dielectric Strength: 250VAC for 1 min.
Operating Temperature: -20°C to 70°C
Storage Temperature: -30°C to 80°C
Operating Force: 160 gf +/- 50 gf
Travel: 0.2mm +/- 0.1mm
Contact Arrangement: SPST, Normally Open

FEATURES & BENEFITS

- Illumination options
- Tape & Reel packaging: 2000 pieces per reel
- Miniature size: 5.6mm x 3.5mm
- Surface Mount Design

PART NUMBER CONFIGURATOR

Series	Model	Actuator	Force	LED	Contact Material
TL	3210	A	F160	B - Blue G - Green R - Red Y - Yellow W - White X - Red/Green Bi-color Z - Green/Yellow Bi-color	Q - Silver

Specifications subject to change without notice



E-SWITCH®

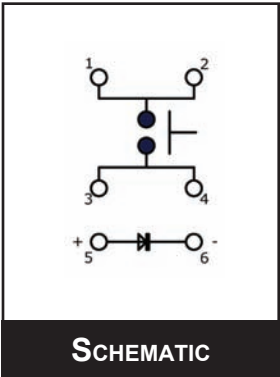
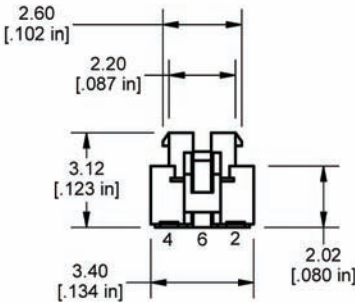
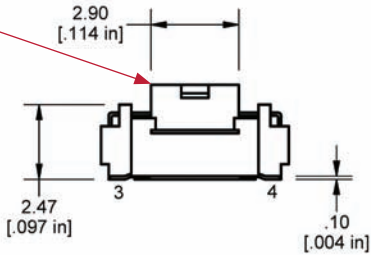
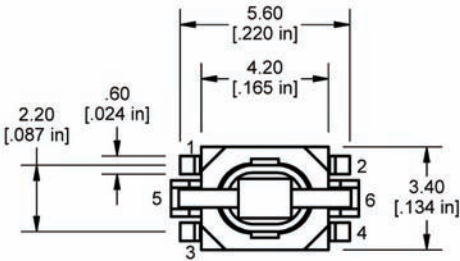
www.e-switch.com

800.867.2717

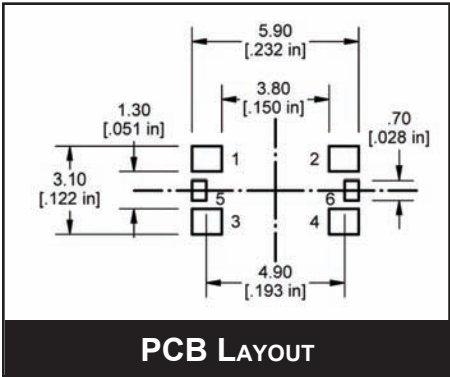
2

BODY DIMENSIONS

This surface taped
for automated
pickup: Remove
tape after soldering



SCHEMATIC



PCB LAYOUT

LED Specifications			
	Forward Current (mA)	Forward Voltage V @ 20mA	Luminous Intensity (mcd)
Blue	20mA	3.8 min - 3.3 typ. VDC	80 mcd
Red	20mA	1.95 typ. - 2.5 max VDC	230 mcd
Green	20mA	2.1 typ. - 2.5 max VDC	50 mcd
Yellow	20mA	2.0 typ. - 2.5 max VDC	160 mcd
White	20mA	3.3 typ. - 4.0 max. VDC	300 mcd
Red/Green Bi-color	Red: 20mA Green: 20mA	Red: 1.95 typ - 2.5 max VDC Green: 3.3 typ. - 4.1 max. VDC	Red: 220 mcd Green: 200 mcd
Yellow/Green Bi-Color	Yellow: 20mA Green: 20mA	Yellow: 2.0 typ. - 2.5 max VDC Green: 2.1 typ. - 2.5 max VDC	Yellow: 180 mcd Green: 60 mcd