



Chipsmall Limited consists of a professional team with an average of over 10 year of expertise in the distribution of electronic components. Based in Hongkong, we have already established firm and mutual-benefit business relationships with customers from,Europe,America and south Asia,supplying obsolete and hard-to-find components to meet their specific needs.

With the principle of “Quality Parts,Customers Priority,Honest Operation,and Considerate Service”,our business mainly focus on the distribution of electronic components. Line cards we deal with include Microchip,ALPS,ROHM,Xilinx,Pulse,ON,Everlight and Freescale. Main products comprise IC,Modules,Potentiometer,IC Socket,Relay,Connector.Our parts cover such applications as commercial,industrial, and automotives areas.

We are looking forward to setting up business relationship with you and hope to provide you with the best service and solution. Let us make a better world for our industry!



Contact us

Tel: +86-755-8981 8866 Fax: +86-755-8427 6832

Email & Skype: info@chipsmall.com Web: www.chipsmall.com

Address: A1208, Overseas Decoration Building, #122 Zhenhua RD., Futian, Shenzhen, China

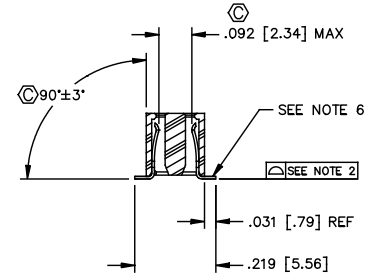
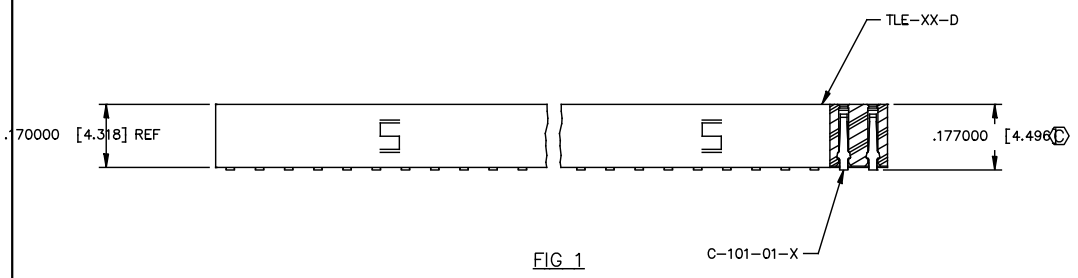
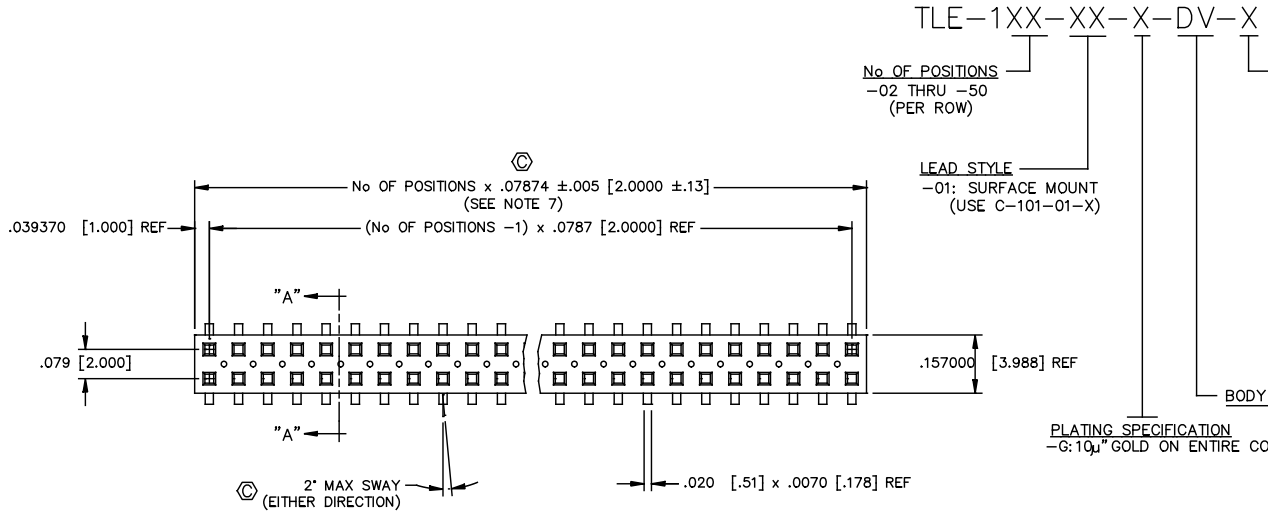


REVISION AE

DO NOT SCALE FROM THIS PRINT

DIMENSIONS ARE IN INCHES		UNLESS OTHERWISE NOTED		TOLERANCES ARE:	
ONE PLACE DECIMALS ± .1	THREE PLACE DECIMALS ± .005	ANGLES ± 2°			
TWO PLACE DECIMALS ± .01	FOUR PLACE DECIMALS ± .0020				

TITLE: DUAL ROW 2mm x 2mm ASSEMBLY
 DWG NO: TLE-1XX-XX-X-DV-X
 SHEET 1 OF 2



- NOTES:
1. MINIMUM PUSHOUT FORCE: .4 lb.
 2. COPLANARITY; POS -02 THRU -26: .004 POS -27 THRU -50: .006
 3. REPRESENTS A CRITICAL DIMENSION.
 4. ALL POSITIONS TO BE PACKAGED IN TUBES.
 5. FOR EVERY FINISHED PART, ONE POSITION WILL BE LOST WHEN CUTTING BODY TO LENGTH.
 6. BURR ALLOWANCE: .003 [.08] MAX
 7. CUT FLASH TO BE .010 [.25] MAX WITH NO FLASH ALLOWED IN HOLES OR EXTENDING BELOW LEADS.
 8. END WALLS TO BE .027+/- .005 [.69+/- .13] AFTER CUT.

PATENT NUMBERS
 5713755 / 5961339

PROPRIETARY NOTE
 This document contains confidential and proprietary information of Samtec, Inc. It is intended for the use of the recipient only. It is not to be distributed, copied, or otherwise used without the express written consent of Samtec, Inc.

MATERIAL:
 BODY:
 VECTRA E1301
 COLOR: BLACK
 TERMINAL:
 PHOSPHER BRONZE

EXISPROD\ASSEMBLY\2MM TLE-ASM

samtec

520 PARK EAST BLVD. NEW ALBANY, INDIANA 47150
 PHONE (812) 944-6733 P.O. BOX 1147
 CODE 55322

MADE BY: D PURVIS 01-20-97

TLE-1XX-XX-X-DV-X
 SHEET 1 OF 2