



Chipsmall Limited consists of a professional team with an average of over 10 year of expertise in the distribution of electronic components. Based in Hongkong, we have already established firm and mutual-benefit business relationships with customers from,Europe,America and south Asia,supplying obsolete and hard-to-find components to meet their specific needs.

With the principle of “Quality Parts,Customers Priority,Honest Operation,and Considerate Service”,our business mainly focus on the distribution of electronic components. Line cards we deal with include Microchip,ALPS,ROHM,Xilinx,Pulse,ON,Everlight and Freescale. Main products comprise IC,Modules,Potentiometer,IC Socket,Relay,Connector.Our parts cover such applications as commercial,industrial, and automotives areas.

We are looking forward to setting up business relationship with you and hope to provide you with the best service and solution. Let us make a better world for our industry!



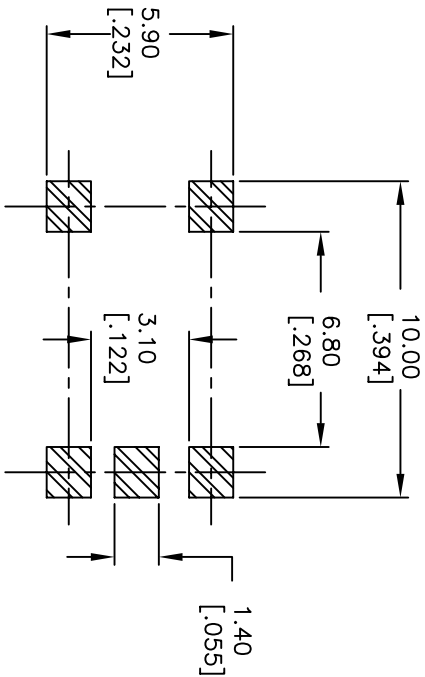
Contact us

Tel: +86-755-8981 8866 Fax: +86-755-8427 6832

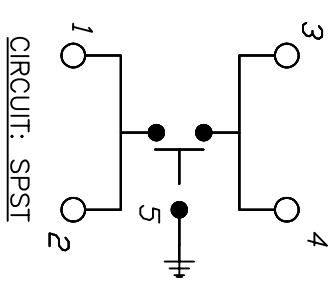
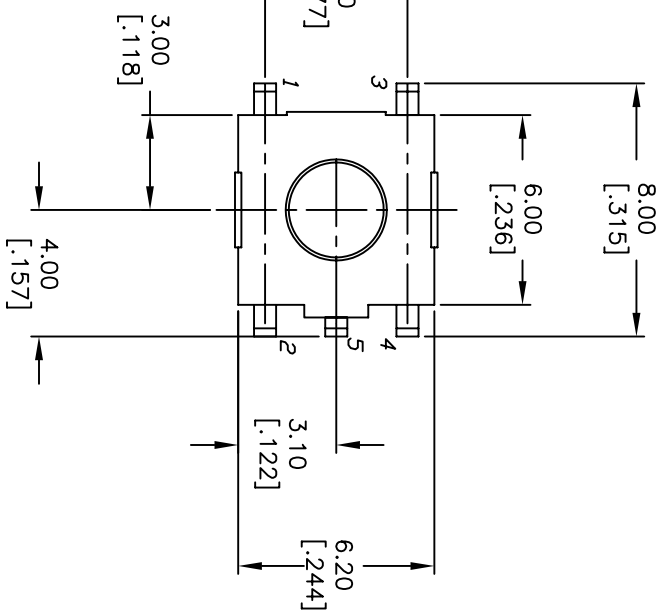
Email & Skype: info@chipsmall.com Web: www.chipsmall.com

Address: A1208, Overseas Decoration Building, #122 Zhenhua RD., Futian, Shenzhen, China



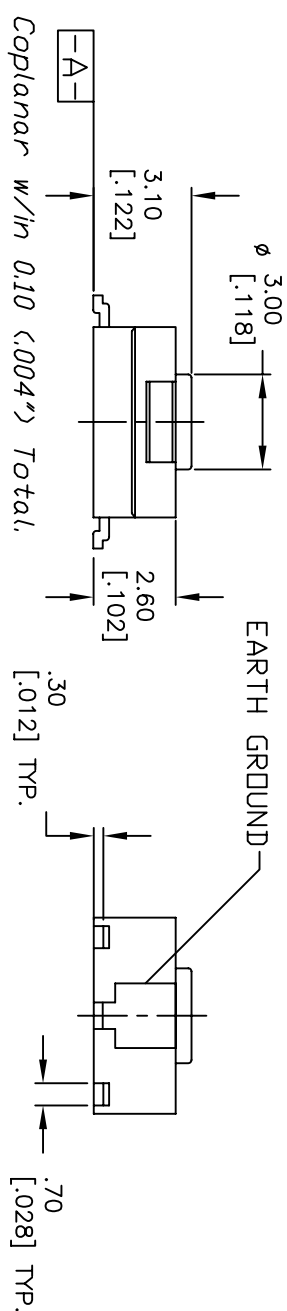


RECOMMENDED P.C.B. LAND



NOTES:

1. ALL DIMENSIONS IN MM
2. GENERAL TOLERANCE: X.X=±0.4
X.XX=±0.25
3. TERMINAL NOS FOR REF. ONLY
4. TRAVEL: 0.25 +0.2/-0.1mm
5. RATING: 50mA, 12VDC
6. OPERATING FORCE: 260±50gf
7. CONTACT RESISTANCE: 50m OHM MAX.
8. PACKAGED: TAPE & REEL 1,500 PER REEL 5 Terminals
9. INSULATION RESISTANCE: 100M OHMS
10. DIELECTRIC DITRENGTH: 250 VAC
11. OPERATING TEMP: -20°C TO 70°C
12. 2002/95/EC (ROHS) COMPLIANT
13. ELECTRICAL LIFE: 100,000 CYCLES
14. BOUNCE: <10m SEC.



Caplanar w/in 0.10 (.004") Total.

<div>E-SWITCH®</div>				
E	15835	EDIT NOTES	3/1/06	PH
D	15759	EDIT NOTES	2/13/06	PH
C	15514	EDIT CIRCUIT LAYOUT	11/10/05	PH
B	11904	REVISED AND REDRAWN	6/25/02	CJB
REV.	ECN No.	DESCRIPTION	DATE	CHKD
TITLE TLE3303 F260 Q G (TAPE & REEL)				
SCALE 4:1		DATE 6/25/02	DR CJB	DWG P010526
			REV E	
THE INFORMATION CONTAINED IN THIS DOCUMENT IS PROPRIETARY TO E-SWITCH AND IS NOT TO BE COPIED OR TRANSFERRED				