



Chipsmall Limited consists of a professional team with an average of over 10 year of expertise in the distribution of electronic components. Based in Hongkong, we have already established firm and mutual-benefit business relationships with customers from,Europe,America and south Asia,supplying obsolete and hard-to-find components to meet their specific needs.

With the principle of "Quality Parts,Customers Priority,Honest Operation,and Considerate Service",our business mainly focus on the distribution of electronic components. Line cards we deal with include Microchip,ALPS,ROHM,Xilinx,Pulse,ON,Everlight and Freescale. Main products comprise IC,Modules,Potentiometer,IC Socket,Relay,Connector.Our parts cover such applications as commercial,industrial, and automotives areas.

We are looking forward to setting up business relationship with you and hope to provide you with the best service and solution. Let us make a better world for our industry!



## Contact us

Tel: +86-755-8981 8866 Fax: +86-755-8427 6832

Email & Skype: info@chipsmall.com Web: www.chipsmall.com

Address: A1208, Overseas Decoration Building, #122 Zhenhua RD., Futian, Shenzhen, China





# MODULAR CONNECTORS

CL 222 TM

## EMI-PROTECTED JACKS

### GENERAL

The EMI-protected modular connectors have been developed from the TM Series connectors, to resist noise. Designed to comply with the FCC (Federal Communications Commission) 68 Standard, they range from standard parts to EMI-protected parts.

Furthermore, they are highly operable and resistant to severe environmental conditions to ensure customer satisfaction with shielding performance.

### FEATURES

- (1) Plug connectors have a single-body shell and clamp to ensure secure protection from EMI.
- (2) To prevent electrostatic problems, plug connectors are designed so that the metal shell can be covered with a plastic hood.
- (3) Jack connectors that allow the shielded parts to be connected first during mating to protect the circuits within the set.
- (4) Plug harnesses can be wired easily and securely with a special tool.
- (5) Eight-conductor plugs and jack connectors comply with the ISO 8877 Standard (ISDN interface connector).

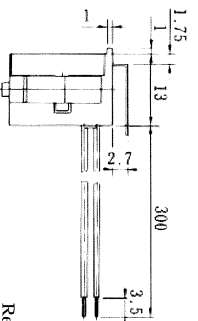
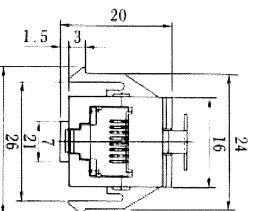
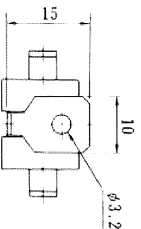
### MAIN APPLICATIONS

ISDN related equipment, HBS, mobile telephones, office automation equipment.

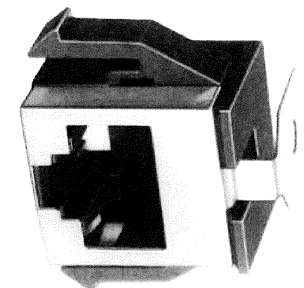
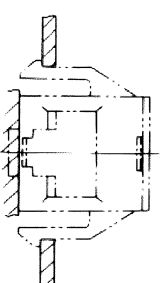
### JACKS WITH LEAD WIRES

#### TM11R-88-35S-300

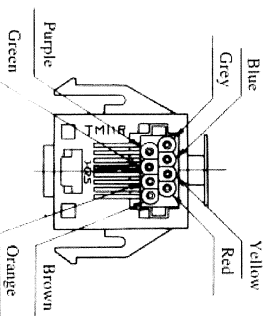
CL No.	Part No.	ROHS
222-4449-3	TM11R-88-35S-300M	YES



Reference mounting drawing



Standard color arrangement



Note : Standard finish color is gray.

The product information in this catalog is for reference only. Please request the Engineering Drawing for the most current and accurate design information.  
 All non-Rohs products have been discontinued, or will be discontinued soon. Please check the products status on the Hirose website Rohs search at [www.hirose-connectors.com](http://www.hirose-connectors.com), or contact your Hirose sales representative.

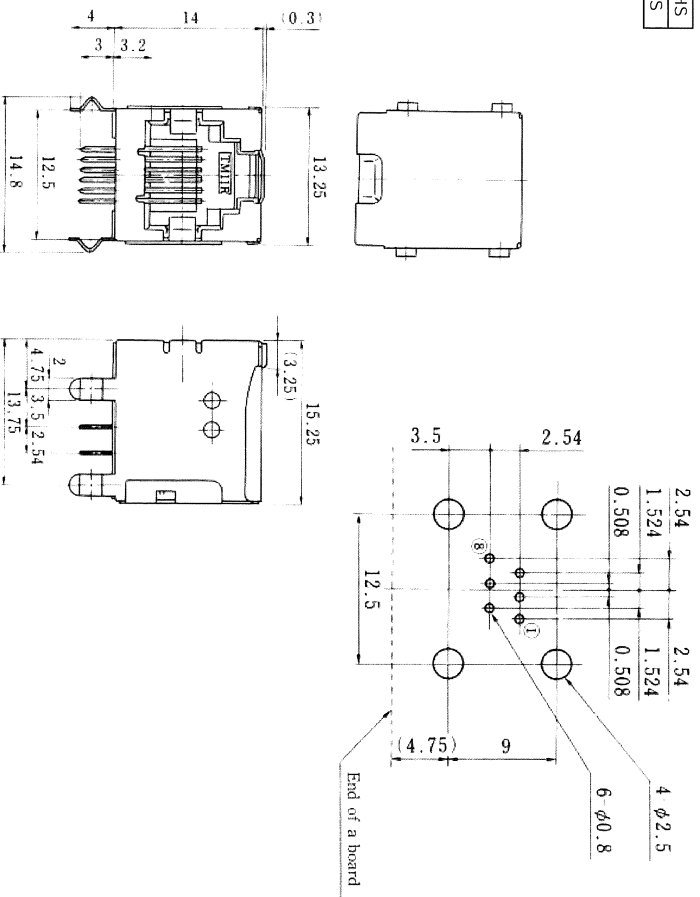
# MODULAR CONNECTORS

CL 222 TM

## Right angle dip type connectors

### ● TM11R-5C-66

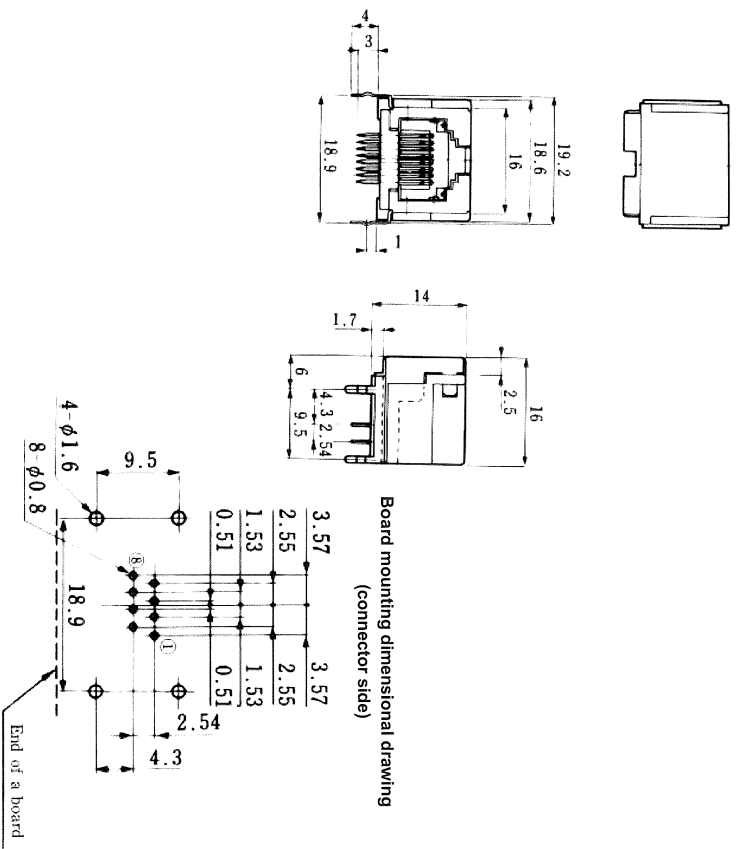
CL No.	Part No.	ROHS
222-2148-6-50	TM11R-5C-66 (50)	YES



Board mounting dimensional drawing (connector side)

### ● TM11R-5C-88

CL No.	Part No.	ROHS
222-1378-0-50	TM11R-5C-88 (50)	YES



Board mounting dimensional drawing (connector side)

Note : Cover standard color is black.

The product information in this catalog is for reference only. Please request the Engineering Drawing for the most current and accurate design information. All non-Rohs products have been discontinued or will be discontinued soon. Please check the products status on the Hirose website Rohs search at [www.hirose-connectors.com](http://www.hirose-connectors.com), or contact your Hirose sales representative.

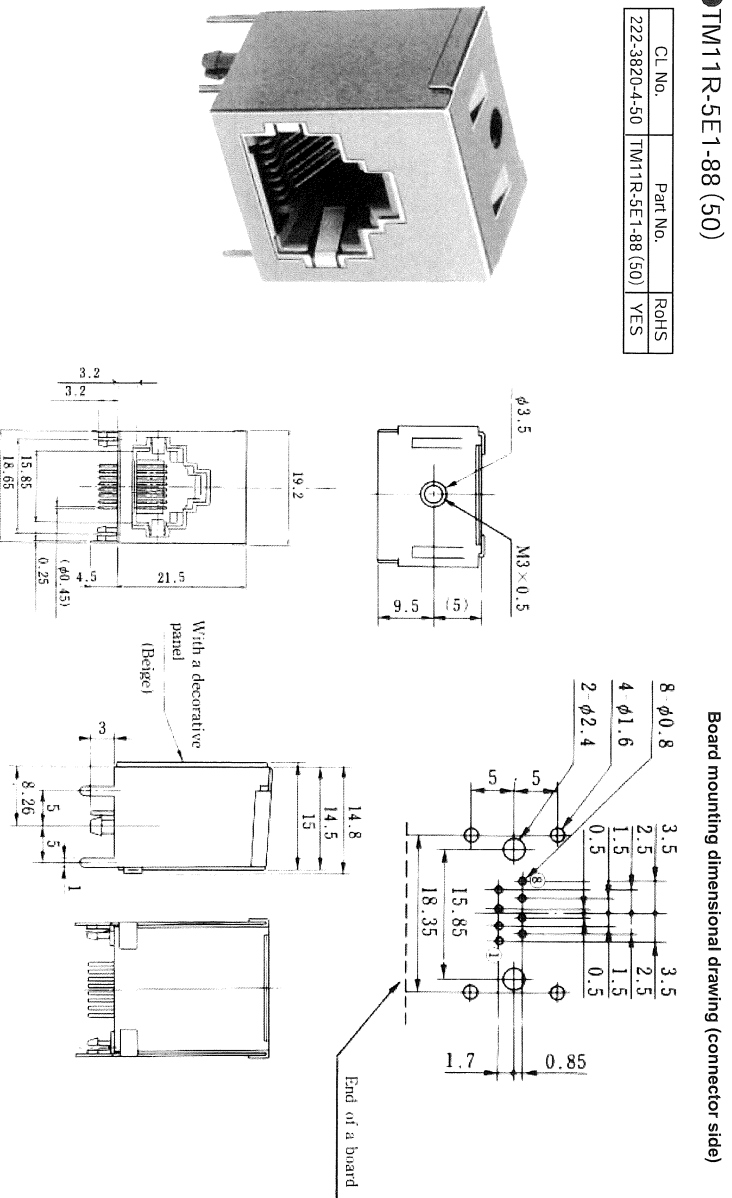
# MODULAR CONNECTORS

CI 222 TM

## Right angle dip type connectors (With a decorative panel)

### ● TM11R-5E1-88 (50)

Cl. No.	Part No.	Rohs
222-3820-4-50	TM11R-5E1-88 (50)	YES



## Straight dip type connectors

### ● TM11R-3C-88 (50)

Cl. No.	Part No.	Rohs
222-2133-9-50	TM11R-3C-88 (50)	YES

