



Chipsmall Limited consists of a professional team with an average of over 10 year of expertise in the distribution of electronic components. Based in Hongkong, we have already established firm and mutual-benefit business relationships with customers from,Europe,America and south Asia,supplying obsolete and hard-to-find components to meet their specific needs.

With the principle of “Quality Parts,Customers Priority,Honest Operation,and Considerate Service”,our business mainly focus on the distribution of electronic components. Line cards we deal with include Microchip,ALPS,ROHM,Xilinx,Pulse,ON,Everlight and Freescale. Main products comprise IC,Modules,Potentiometer,IC Socket,Relay,Connector.Our parts cover such applications as commercial,industrial, and automotives areas.

We are looking forward to setting up business relationship with you and hope to provide you with the best service and solution. Let us make a better world for our industry!



Contact us

Tel: +86-755-8981 8866 Fax: +86-755-8427 6832

Email & Skype: info@chipsmall.com Web: www.chipsmall.com

Address: A1208, Overseas Decoration Building, #122 Zhenhua RD., Futian, Shenzhen, China



COUNT	DESCRIPTION OF REVISIONS	BY	CHKD	DATE	COUNT	DESCRIPTION OF REVISIONS	BY	CHKD	DATE
△					△				
△					△				

APPLICABLE STANDARD			
RATING	OPERATING TEMPERATURE RANGE	-25 °C TO 80 °C	STORAGE TEMPERATURE RANGE °C TO °C
	VOLTAGE	125 V AC	CURRENT 500 mA

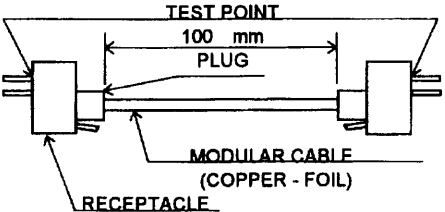
SPECIFICATIONS

ITEM	TEST METHOD	REQUIREMENTS	QT	AT
------	-------------	--------------	----	----

CONSTRUCTION

GENERAL EXAMINATION	VISUALLY AND BY MEASURING INSTRUMENT.	ACCORDING TO DRAWING.	○	○
MARKING	CONFIRMED VISUALLY.		○	○

ELECTRIC CHARACTERISTICS


CONTACT RESISTANCE	100 mA DC (OR 1000 Hz AC). MEASUREMENT POINTS SHALL BE AS FOLLOWS. TEST POINT  RECEPTACLE (ONE EXAMPLE OF CONNECTOR CONFIGURATION IS SHOWN.)	200 mΩ MAX.	○	○
INSULATION RESISTANCE	100 V DC.	100 MΩ MIN.	○	○
VOLTAGE PROOF	500 V AC FOR 1 min.	NO FLASHOVER OR BREAKDOWN.	○	○

MECHANICAL CHARACTERISTICS

MECHANICAL OPERATION	200 TIMES INSERTIONS AND EXTRACTIONS.	① CONTACT RESISTANCE: 220 mΩ MAX. ② NO DAMAGE, CRACK AND LOOSENESS, OF PARTS.	○	—
VIBRATION	FREQUENCY 10 TO 55 Hz, SINGLE AMPLITUDE 0.75 mm, — m/s ² AT 2 h, FOR 3 DIRECTIONS.	① NO ELECTRICAL DISCONTINUITY OF 5 μs.	○	—
SHOCK	490 m/s ² DIRECTIONS OF PULSE 11 ms AT 3 TIME FOR 3 DIRECTION.	② CONTACT RESISTANCE: 220 mΩ MAX. ③ NO DAMAGE, CRACK AND LOOSENESS, OF PARTS.	○	—

ENVIRONMENTAL CHARACTERISTICS

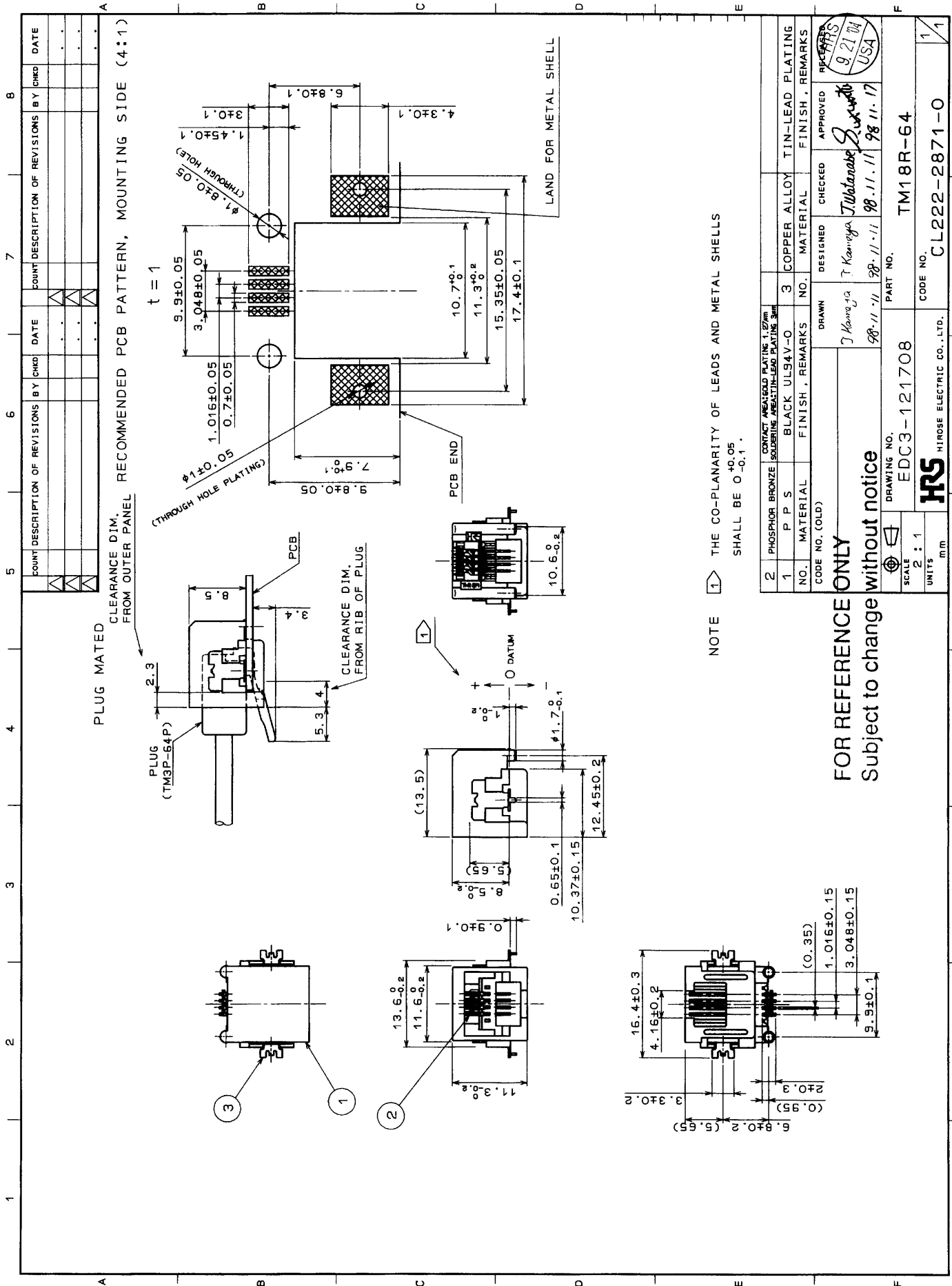
DAMP HEAT (STEADY STATE)	EXPOSED AT 40 °C, 90 TO 95 %, 500 h.	① CONTACT RESISTANCE: 220 mΩ MAX. ② INSULATION RESISTANCE: 1 MΩ MIN. (AT HIGH HUMIDITY) ③ INSULATION RESISTANCE: 10 MΩ MIN. (AT DRY) ④ NO DAMAGE, CRACK AND LOOSENESS, OF PARTS.	○	—
RAPID CHANGE OF TEMPERATURE	TEMPERATURE -55±3 → 5 TO 35 → 85±2 → 5 TO 35°C TIME 30 TO 35→5 MAX→30 TO 35→5 MAX min UNDER 5 CYCLES.	① CONTACT RESISTANCE: 220 mΩ MAX. ② INSULATION RESISTANCE: 100 MΩ MIN. ③ NO DAMAGE, CRACK AND LOOSENESS, OF PARTS.	○	—
CORROSION SALT MIST	EXPOSED IN 5 % SALT WATER SPRAY FOR 48 h.	① CONTACT RESISTANCE: 220 mΩ MAX. ② NO DAMAGE, CRACK AND LOOSENESS,	○	—

REMARKS FOR REFERENCE ONLY Subject to change without notice Unless otherwise specified, refer to JIS C 5402.	DRAWN	DESIGNED	CHECKED	APPROVED	RELEASED
	<i>J. Kambe</i> 98.11.11	<i>J. Kaneko</i> 98.11.11	<i>T. Watanabe</i> 98.11.11	<i>[Signature]</i> 98.11.17	

Note QT:Qualification Test AT:Assurance Test ○:Applicable Test

HRS HIROSE ELECTRIC CO., LTD.	SPECIFICATION SHEET	PART NO. TM18R - 64
CODE NO.(OLD) CL	DRAWING NO. ELC4 - 121708	CODE NO. CL 222 - 2871 - 0

TO
Q2



CLEARANCE DIM. FROM OUTER PANEL
 PLUG MATED
 t = 1
 RECOMMENDED PCB PATTERN, MOUNTING SIDE (4:1)

NOTE 1 THE CO-PLANARITY OF LEADS AND METAL SHELLS SHALL BE 0±0.1.

FOR REFERENCE ONLY
 without notice
 Subject to change

2	PHOSPHOR BRONZE CONTACT AREA-LEAD PLATING 1.27mm			
1	P P S BLACK UL94V-0	3	COPPER ALLOY TIN-LEAD PLATING	
NO. MATERIAL FINISH, REMARKS		MATERIAL FINISH, REMARKS		APPROVED
DRAWN		DESIGNED		CHECKED
J. Kameya		T. Kanoy		T. Kanoy
98.11.11		98.11.11		98.11.17
SCALE 2 : 1		PART NO. TM18R-64		FORM NO. 225
UNITS mm		CODE NO. CL222-2871-0		1 / 1

(0.35)
 1.016±0.15
 3.048±0.15
 9.5±0.1

