



Chipsmall Limited consists of a professional team with an average of over 10 year of expertise in the distribution of electronic components. Based in Hongkong, we have already established firm and mutual-benefit business relationships with customers from,Europe,America and south Asia,supplying obsolete and hard-to-find components to meet their specific needs.

With the principle of “Quality Parts,Customers Priority,Honest Operation,and Considerate Service”,our business mainly focus on the distribution of electronic components. Line cards we deal with include Microchip,ALPS,ROHM,Xilinx,Pulse,ON,Everlight and Freescale. Main products comprise IC,Modules,Potentiometer,IC Socket,Relay,Connector.Our parts cover such applications as commercial,industrial, and automotives areas.

We are looking forward to setting up business relationship with you and hope to provide you with the best service and solution. Let us make a better world for our industry!



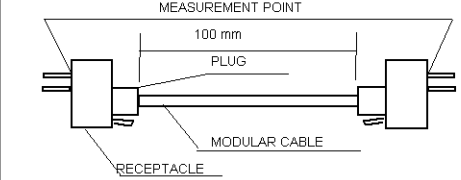
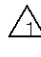


Contact us

Tel: +86-755-8981 8866 Fax: +86-755-8427 6832

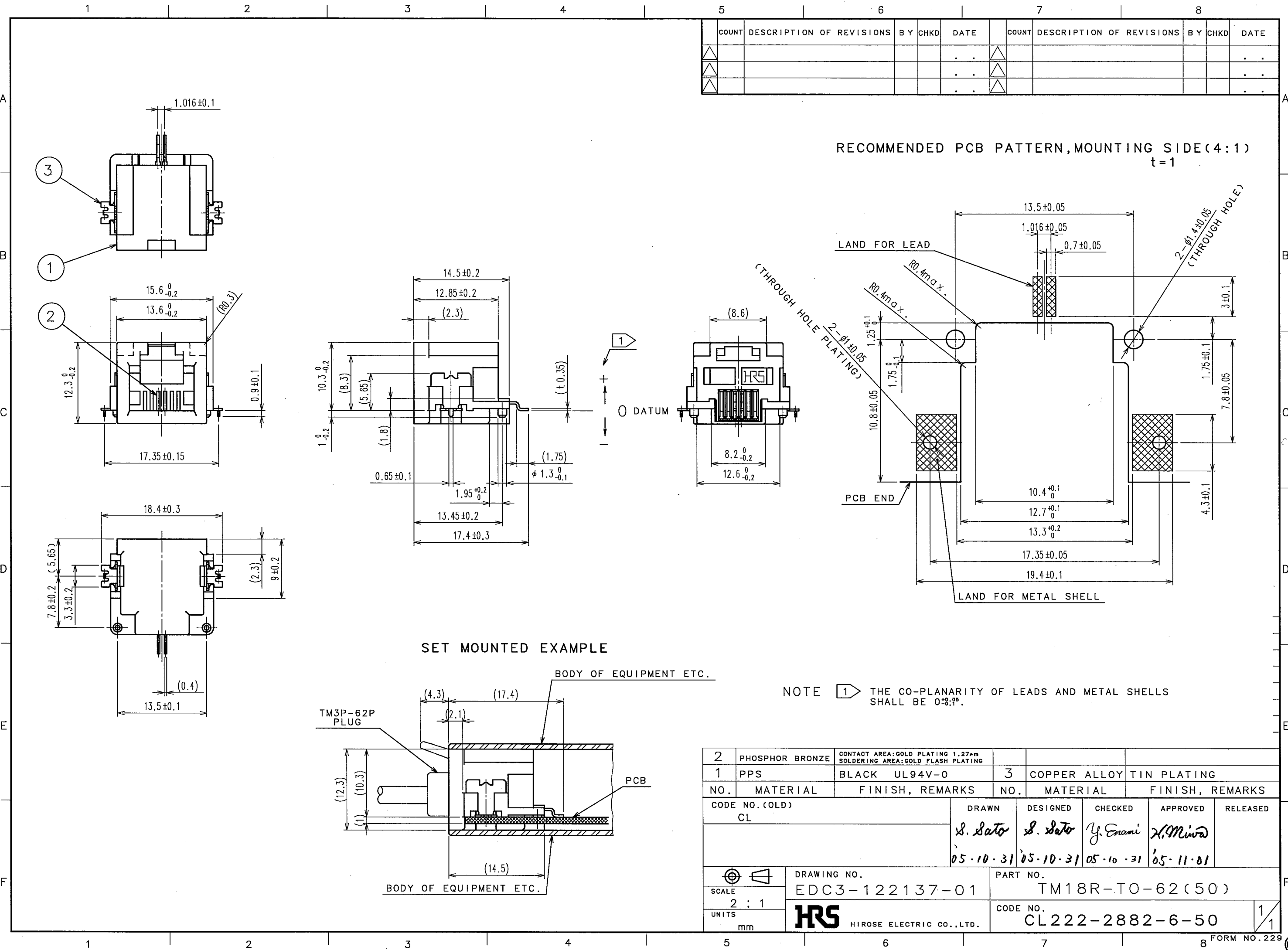
Email & Skype: info@chipsmall.com Web: www.chipsmall.com

Address: A1208, Overseas Decoration Building, #122 Zhenhua RD., Futian, Shenzhen, China



APPLICABLE STANDARD				
RATING	OPERATING TEMPERATURE RANGE	-25°C TO +80°C	STORAGE TEMPERATURE RANGE	-25°C TO +80°C
	VOLTAGE	AC 125 V	CURRENT	0.5 A
SPECIFICATIONS				
ITEM	TEST METHOD	REQUIREMENTS	QT	AT
CONSTRUCTION				
GENERAL EXAMINATION	VISUALLY AND BY MEASURING INSTRUMENT.	ACCORDING TO DRAWING.	X	X
MARKING	CONFIRMED VISUALLY.		X	X
ELECTRIC CHARACTERISTICS				
CONTACT RESISTANCE	100 mA MAX (DC OR 1000 Hz).  (ONE EXAMPLE CONNECTOR CONFIGURATION IS SHOWN.)	200 mΩ MAX.	X	X
INSULATION RESISTANCE	100 V DC.	100 MΩ MIN.	X	X
VOLTAGE PROOF	500 V AC FOR 1 min.	NO FLASHOVER OR BREAKDOWN.	X	X
MECHANICAL CHARACTERISTICS				
MECHANICAL OPERATION	200 TIMES INSERTIONS AND EXTRACTIONS.	1) CONTACT RESISTANCE: 220 mΩ MAX. 2) NO DAMAGE, CRACK AND LOOSENESS OF PARTS.	X	-
VIBRATION	FREQUENCY 10 TO 55 Hz SINGLE AMPLITUDE 0.75 mm, - m/s ² AT 10 CYCLES FOR 3 DIRECTIONS.	1) NO ELECTRICAL DISCONTINUITY OF 5μs. 2) CONTACT RESISTANCE: 220 mΩ MAX. 3) NO DAMAGE, CRACK AND LOOSENESS OF PARTS.	X	-
SHOCK	490 m/s ² DIRECTIONS OF PULSE 11 ms AT 3 TIMES FOR 3 DIRECTIONS.		X	-
ENVIRONMENTAL CHARACTERISTICS				
DAMP HEAT, CYCLIC	EXPOSED AT +40°C, 90~95 %, 500 h	1) CONTACT RESISTANCE: 220 mΩ MAX. 2) INSULATION RESISTANCE: 1 MΩ MIN. (AT HIGH HUMIDITY) 10 MΩ MIN. (AT DRY) 3) NO DAMAGE, CRACK AND LOOSENESS OF PARTS.	X	-
RAPID CHANGE OF TEMPERATURE	TEMPERATURE -55±3→5~35→85±2→5~35 °C TIME 30~35→5MAX→30~35→5MAX min UNDER 5 CYCLES.	1) CONTACT RESISTANCE: 220 mΩ MAX. 2) INSULATION RESISTANCE: 100 MΩ MIN. 3) NO DAMAGE, CRACK AND LOOSENESS OF PART	X	-
CORROSION SALT MIST	EXPOSED IN 5 % SALT WATER SPRAY FOR 48 h.	1) CONTACT RESISTANCE: 220 mΩ MAX. 2) NO HEAVY CORROSION.	X	-
 DELETED				
COUNT	DESCRIPTION OF REVISIONS	DESIGNED	CHECKED	DATE
4	DIS-E-000366	SS.SATOH	YH.ENAMI	05.11.04
REMARK		APPROVED	HO.MIWA	05.11.01
		CHECKED	YH.ENAMI	05.10.31
		DESIGNED	SS.SATOH	05.10.31
		DRAWN	SS.SATOH	05.10.31
Unless otherwise specified, refer to JIS C 5402.		DRAWING NO.		ELC4-122137-01
	SPECIFICATION SHEET	PART NO.	TM18R-T0-62 (50)	
	HIROSE ELECTRIC CO., LTD.	CODE NO.	CL222-2882-6-50	 1/

TO
Q



COUNT	DESCRIPTION OF REVISIONS	BY	CHKD	DATE	COUNT	DESCRIPTION OF REVISIONS	BY	CHKD	DATE
△					△				
△					△				
△					△				

RECOMMENDED PCB PATTERN, MOUNTING SIDE (4:1)
t=1

SET MOUNTED EXAMPLE

NOTE 1 THE CO-PLANARITY OF LEADS AND METAL SHELLS SHALL BE 0°±30°.

2	PHOSPHOR BRONZE	CONTACT AREA: GOLD PLATING 1.27µm SOLDERING AREA: GOLD FLASH PLATING	3	COPPER ALLOY	TIN PLATING		
1	PPS	BLACK UL94V-0					
NO.	MATERIAL	FINISH, REMARKS	NO.	MATERIAL	FINISH, REMARKS		
CODE NO. (OLD)	CL		DRAWN	DESIGNED	CHECKED	APPROVED	RELEASED
			S. Sato	S. Sato	Y. Enami	H. Miwa	
			05-10-31	05-10-31	05-10-31	05-11-01	
DRAWING NO. EDC3-122137-01			PART NO. TM18R-TO-62(50)				
SCALE 2:1			CODE NO. CL222-2882-6-50				
UNITS mm			HS HIROSE ELECTRIC CO., LTD.				