



Chipsmall Limited consists of a professional team with an average of over 10 year of expertise in the distribution of electronic components. Based in Hongkong, we have already established firm and mutual-benefit business relationships with customers from,Europe,America and south Asia,supplying obsolete and hard-to-find components to meet their specific needs.

With the principle of “Quality Parts,Customers Priority,Honest Operation,and Considerate Service”,our business mainly focus on the distribution of electronic components. Line cards we deal with include Microchip,ALPS,ROHM,Xilinx,Pulse,ON,Everlight and Freescale. Main products comprise IC,Modules,Potentiometer,IC Socket,Relay,Connector.Our parts cover such applications as commercial,industrial, and automotives areas.

We are looking forward to setting up business relationship with you and hope to provide you with the best service and solution. Let us make a better world for our industry!



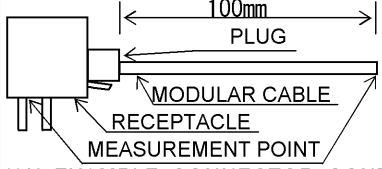
Contact us

Tel: +86-755-8981 8866 Fax: +86-755-8427 6832

Email & Skype: info@chipsmall.com Web: www.chipsmall.com

Address: A1208, Overseas Decoration Building, #122 Zhenhua RD., Futian, Shenzhen, China

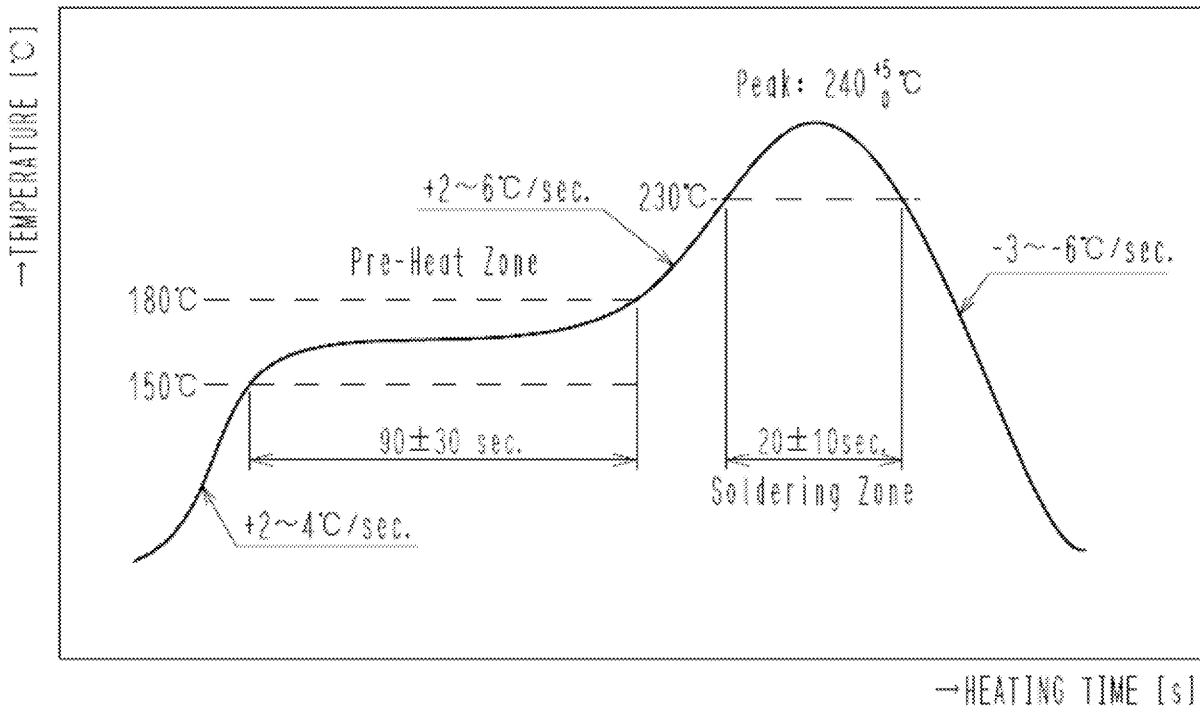


| APPLICABLE STANDARD | | | | | |
|--|---|--------------------------|--|------------------|----------------|
| RATING | OPERATING TEMPERATURE RANGE | -25 °C TO +80 °C | STORAGE TEMPERATURE RANGE | -25 °C TO +60 °C | |
| | VOLTAGE | 125 V AC | OPERATING HUMIDITY RANGE | 95 % MAX. | |
| | CURRENT | 500mA | APPLICABLE CABLE | — | |
| SPECIFICATIONS | | | | | |
| ITEM | TEST METHOD | | REQUIREMENTS | QT | AT |
| CONSTRUCTION | | | | | |
| GENERAL EXAMINATION | VISUALLY AND BY MEASURING INSTRUMENT. | | ACCORDING TO DRAWING. | X | X |
| MARKING | CONFIRMED VISUALLY. | | | X | X |
| ELECTRIC CHARACTERISTICS | | | | | |
| CONTACT RESISTANCE | 100 mA MAX (DC OR 1000 Hz AC).  (AN EXAMPLE CONNECTOR CONFIGURATION IS SHOWN.) | | 60 mΩ MAX. | X | X |
| INSULATION RESISTANCE | 100 V DC. | | 100 MΩ MIN. | X | X |
| VOLTAGE PROOF (CONTACT TO CONTACT) | 500 V AC FOR 1 min. | | NO FLASHOVER OR BREAKDOWN. | X | X |
| MECHANICAL CHARACTERISTICS | | | | | |
| MECHANICAL OPERATION | 5000 TIMES INSERTIONS AND EXTRACTIONS. | | 1) CONTACT RESISTANCE: 90 mΩ MAX. 2) NO DAMAGE, CRACK AND LOOSENESS OF PARTS. | X | — |
| VIBRATION | FREQUENCY 10 TO 55 Hz SINGLE AMPLITUDE 0.75 mm, AT 2 HOURS FOR 3 DIRECTIONS. | | 1) NO ELECTRICAL DISCONTINUITY OF 5 μs. 2) CONTACT RESISTANCE: 90 mΩ MAX. 3) NO DAMAGE, CRACK AND LOOSENESS OF PARTS. | X | — |
| SHOCK | 490 m/s ² DIRECTIONS OF PULSE 11 ms AT 3 TIMES FOR 3 DIRECTIONS. | | | X | — |
| ENVIRONMENTAL CHARACTERISTICS | | | | | |
| DAMP HEAT, CYCLIC | EXPOSED AT +40 °C, 90 TO 95 % , 500 h | | 1) CONTACT RESISTANCE: 90 mΩ MAX. 2) INSULATION RESISTANCE: 1 MΩ MIN. (AT HIGH HUMIDITY) 10 MΩ MIN. (AT DRY) 3) NO DAMAGE, CRACK AND LOOSENESS OF PARTS. | X | — |
| RAPID CHANGE OF TEMPERATURE | TEMPERATURE -55±3 → 5 TO 35 → 85±2 → 5 TO 35 °C TIME 30 +5/0 → 5 MAX. → 30 +5/0 → 5 MAX. min UNDER 5 CYCLES. | | 1) CONTACT RESISTANCE: 90 mΩ MAX. 2) INSULATION RESISTANCE: 100 MΩ MIN. 3) NO DAMAGE, CRACK AND LOOSENESS OF PART | X | — |
| CORROSION SALT MIST | EXPOSED IN 5 % SALT WATER SPRAY FOR 48 h. | | 1) CONTACT RESISTANCE: 90 mΩ MAX. 2) NO HEAVY CORROSION. | X | — |
| | | | | | |
| | COUNT | DESCRIPTION OF REVISIONS | DESIGNED | CHECKED | DATE |
| △ | | | | | |
| REMARK | | | APPROVED | KN. ICHIKAWA | 11. 01. 13 |
| | | | CHECKED | KN. ICHIKAWA | 11. 01. 13 |
| | | | DESIGNED | HN. ANDO | 11. 01. 11 |
| Unless otherwise specified, refer to JIS C 5402. | | | DRAWN | HN. ANDO | 11. 01. 11 |
| Note QT:Qualification Test AT:Assurance Test X:Applicable Test | | | DRAWING NO. | | ELC4-127281-00 |
| HRS | SPECIFICATION SHEET | | PART NO. | TM25RS-5CNA-88 | |
| | HIROSE ELECTRIC CO., LTD. | | CODE NO. | CL222-2967-7-00 | △ 1/2 |

SPECIFICATIONS


| ITEM | TEST METHOD | REQUIREMENTS | QT | AT |
|------|-------------|--------------|----|----|
|------|-------------|--------------|----|----|

RECOMMENDED TEMPERATURE PROFILE (REFLOW SOLDERING, MOUNTING AREA)

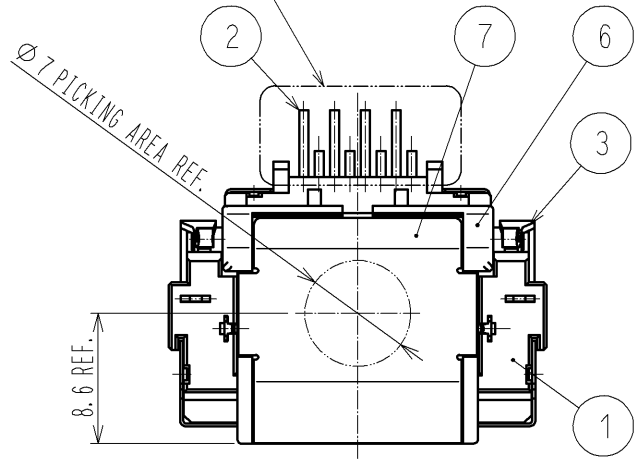
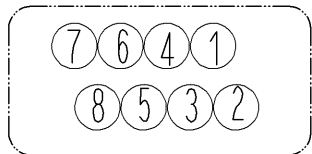


RECOMMENDED MANUAL SOLDERING TEMPERATURE

- TEMPERATURE : 350±10°C
- HEATING TIME : 4sec. MAX.

| | | | | | |
|--|---------------------------|-------------|----------------|-----------------|---|
| Note QT:Qualification Test AT:Assurance Test X:Applicable Test | | DRAWING NO. | ELC4-127281-00 | | |
| HRS | SPECIFICATION SHEET | | PART NO. | TM25RS-5CNA-88 | |
| | HIROSE ELECTRIC CO., LTD. | | CODE NO | CL222-2967-7-00 |  2/2 |

2 MOUNTING AREA PIN ASSIGNMENT

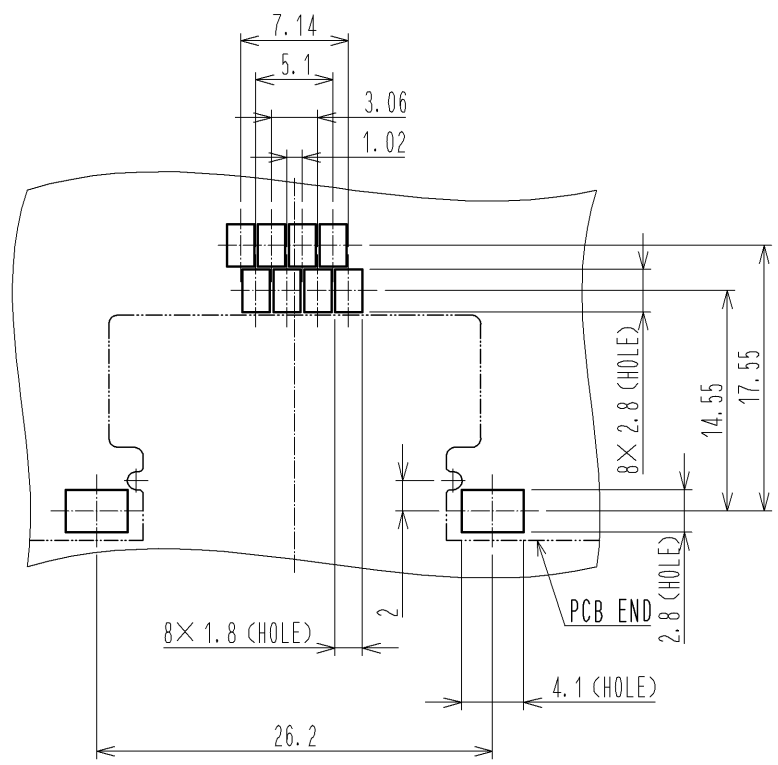
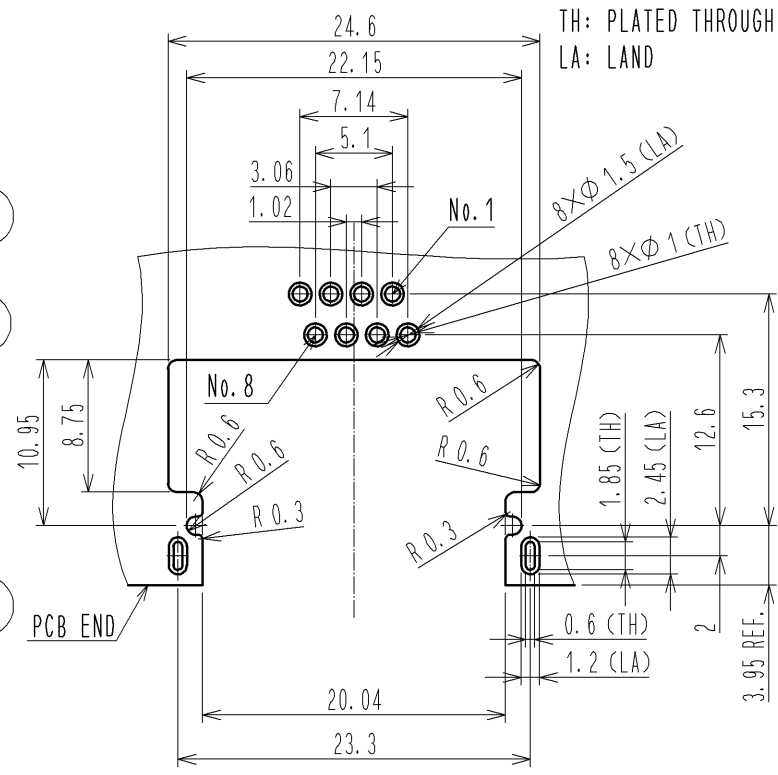


RECOMMENDED PC BORAD PATTERN

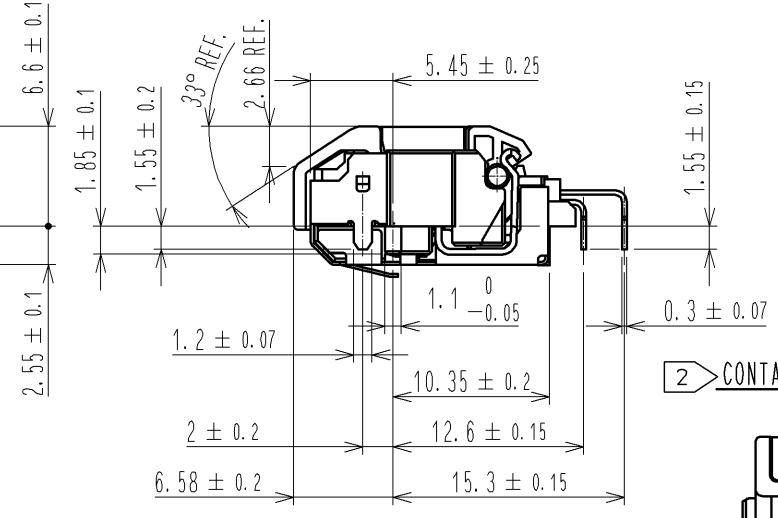
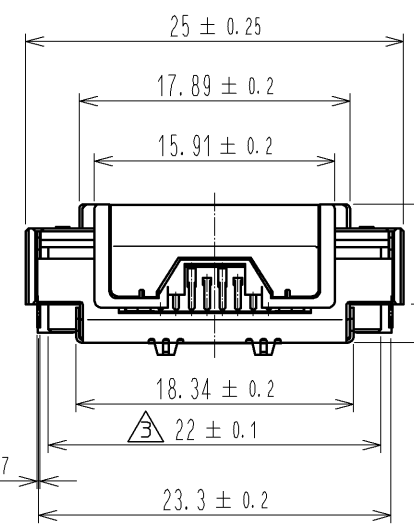
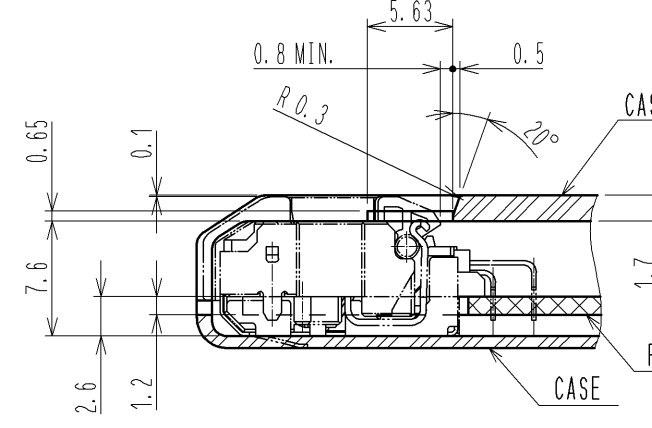
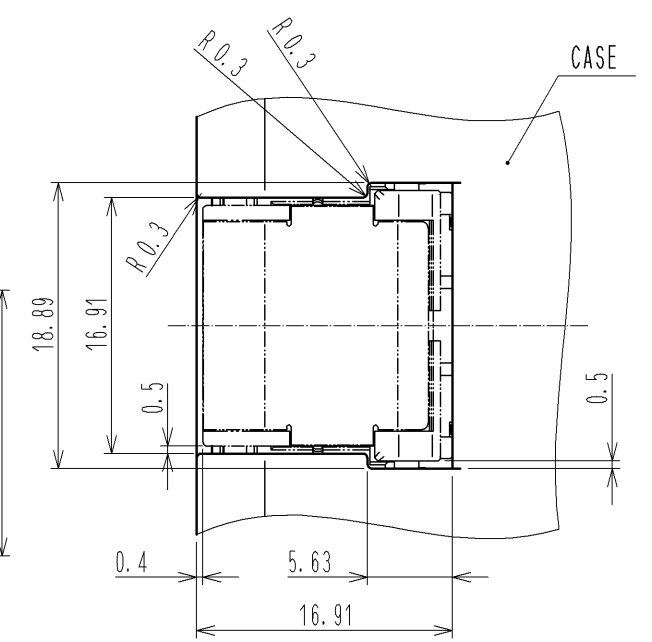
PCB THICKNESS: t1.2
TH: PLATED THROUGH HOLE
LA: LAND

METAL MASK DIMENSIONS FOR REFERENCE

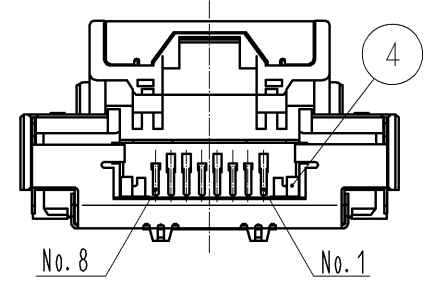
THICKNESS : t0.12



INSTALLATION DIMENSIONS FOR REFERENCE



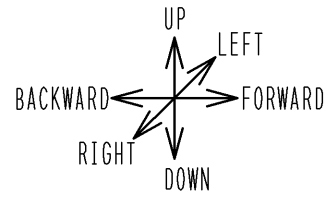
2 CONTACT AREA PIN ASSIGNMENT



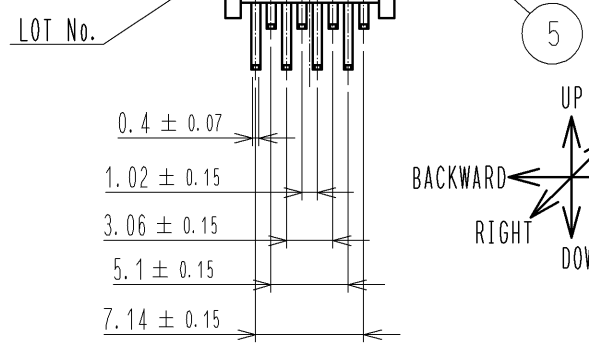
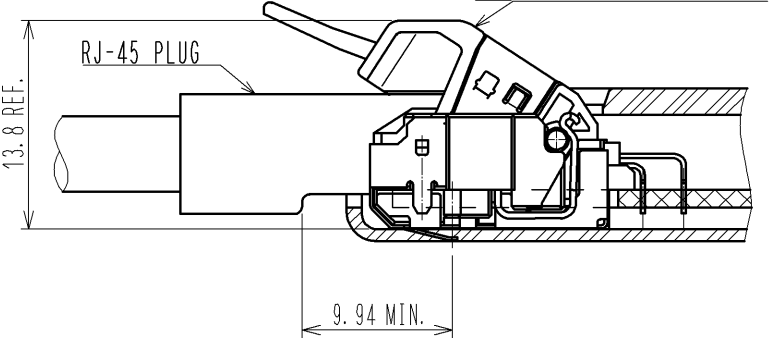
NOTES

- 1 WRENCHING STRENGTH IN EACH DIRECTION IS STATED AS FOLLOWS.
BACKWARD AND FORWARD : 60N MIN.
RIGHT AND LEFT : 30MIN.
UP AND DOWN : 15N MIN. MOVING PART SHALL NOT BE COME OFF.
AFTER IT IS EXAMINATED 20 TIMES : 10N MIN.
- 2 PIN ASSIGNMENT IS AS SHOWN IN FIGURE.
PLEASE NOTE THE PIN ASSIGNMENT IS FOR MOUNTING AREA AND DIFFERENT FROM THAT FOR CONTACT AREA.

1 WRENCHING DIRECTION



REVISED CONFIGURATION



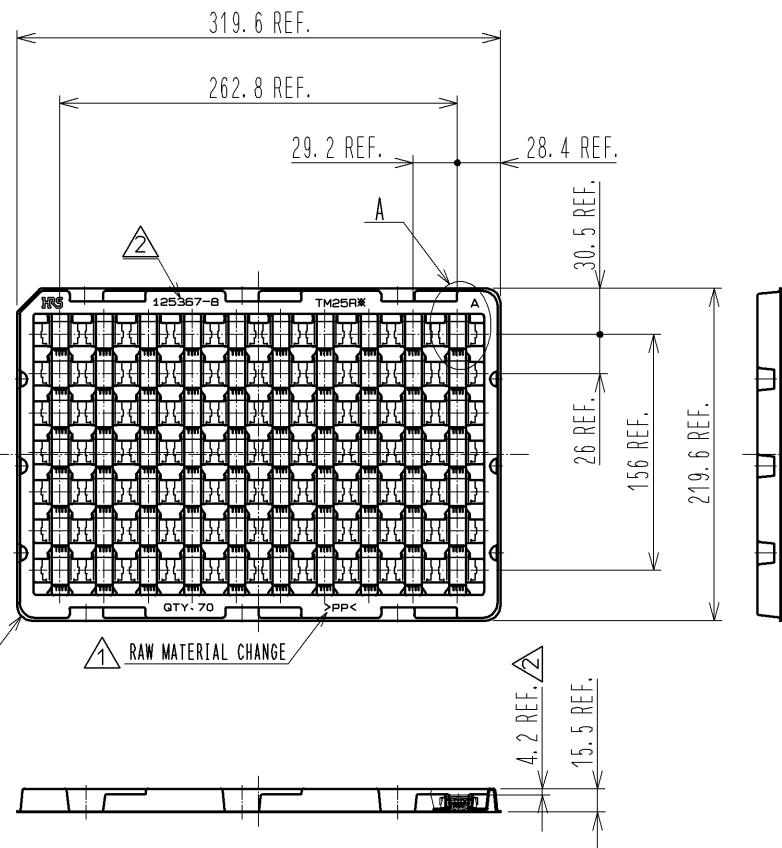
| NO. | MATERIAL | FINISH | REMARKS | NO. | MATERIAL | FINISH | REMARKS |
|-----|-----------------|--------|---|-----|-----------------|--------|--|
| 4 | STAINLESS STEEL | | | 8 | PP | | CLEAR, TRAY |
| 3 | STAINLESS STEEL | | | 7 | STAINLESS STEEL | | NICKEL PLATING : 0.1µm MIN. |
| 2 | PHOSPHOR BRONZE | | CONTACT AREA : GOLD PLATING 0.2µm MIN. MOUNTING AREA : GOLD PLATING 0.03µm MIN. UNDER PLATING : NICKEL PLATING 1µm MIN. | 6 | POLYAMIDE | | BLACK, UL94V-0 |
| 1 | POLYAMIDE | | BLACK, UL94V-0 | 5 | STAINLESS STEEL | | BOTH SIDE TIN PLATING 38µm MIN. UNDER PLATING NICKEL PLATING 125µm MIN. |

| UNITS | SCALE | COUNT | DESCRIPTION OF REVISIONS | DESIGNED | CHECKED | DATE |
|-------|-------|-------|--------------------------|----------|------------|------------|
| mm | 2 : 1 | 1 | DIS-E-004428 | HN. ANDO | AH. KODAMA | 12. 11. 14 |

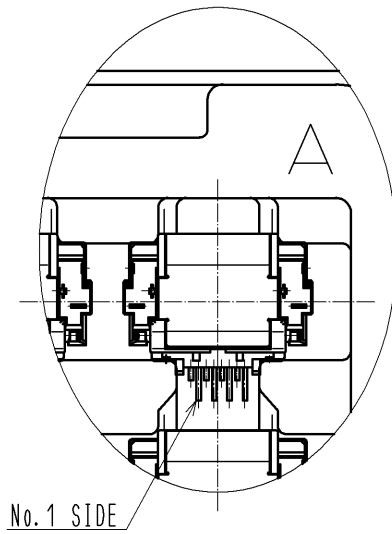
| APPROVED | DATE | DRAWING NO. |
|--------------|------------|-----------------|
| KN. ICHIKAWA | 11. 01. 13 | EDC3-127281-00 |
| KN. ICHIKAWA | 11. 01. 13 | PART NO. |
| HN. ANDO | 11. 01. 13 | TM25RS-5CNA-88 |
| HN. ANDO | 11. 01. 13 | CODE NO. |
| | | CL222-2967-7-00 |

3 PACKING OF TRAY (FREE)

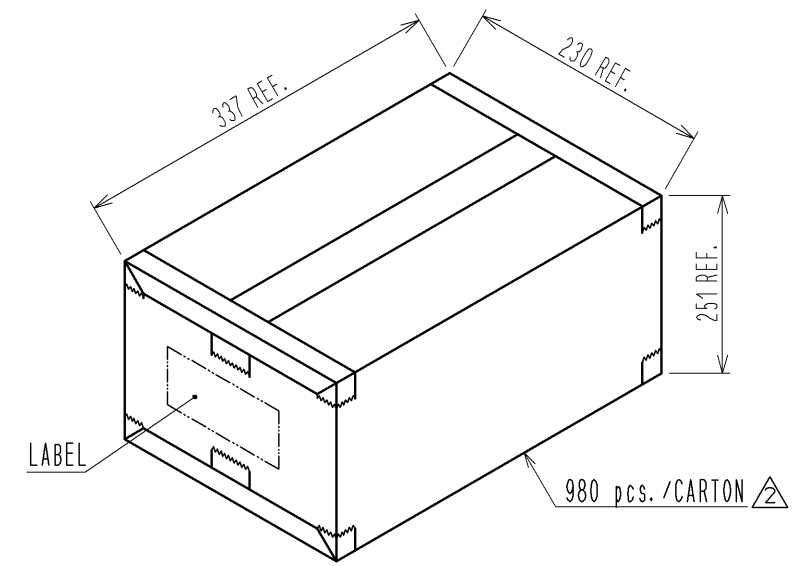
A TYPE 70 pcs./TRAY



A (1:1)

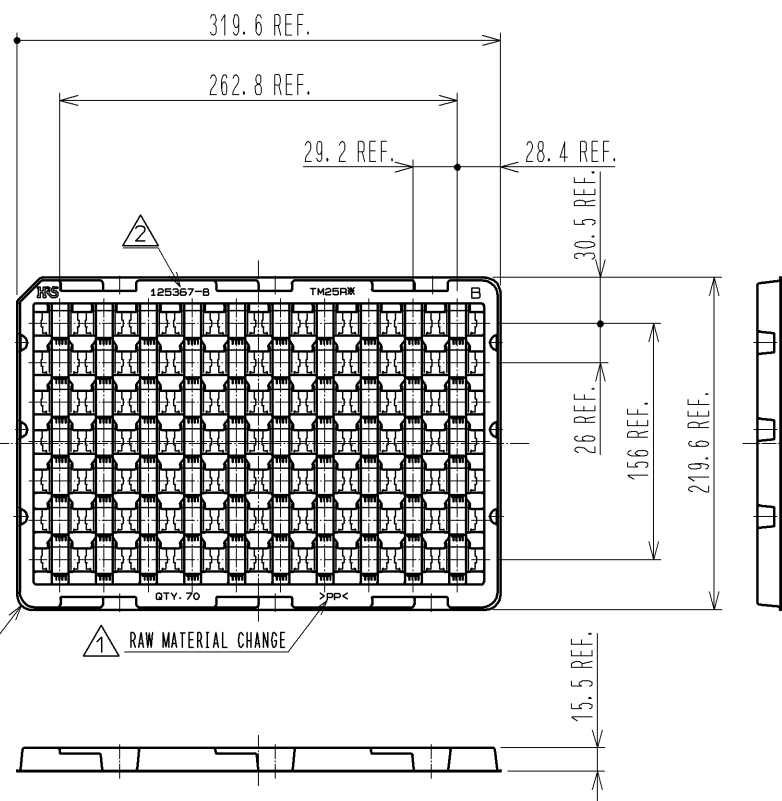


4 PACKING OF CARTON (FREE)



5 4 ACCUMULATION OF TRAY (FREE)

B TYPE 70 pcs./TRAY



CORRUGATED CARDBOARD

PP BAND

CORRUGATED CARDBOARD

EMPTY TRAY : 1 pcs.

TRAY : 7 pcs.

CONTENTS OF A LABEL

| 荷 札 | | | | |
|--|----------------------------|----------------------------|---------|------|
| 得意先名 (Customer Name) | | 納入場所 (Shipment to) | | |
| 注文番号 (P/O No.) | 得意先品名 (Customer Part Name) | | 自販 | |
| 受注製番 | 1箱の入り数 (This box contains) | 個 (Qty) | 個 (Pcs) | 発送場所 |
| 搬出登録 (Delivery Register No.) | 得意先数量 (Pcs) | | | |
| 品目コード | 仕様 | HRS品名 (Hirose Part Number) | | |
| 仕様名 | | | 工事番号 | |
| 特記事項 | | | | |
| 二枚分岐 | 営業コード | MADE IN JAPAN | | |
| ヒロセ電機株式会社 Hirose Electric Co., Ltd. | | | | |

- NOTES
- 3 PACKING : 70 pcs./TRAY
 - 4 THE PACKING SPECIFICATION CAN VARY WITH PACKING QUANTITIES.
 - 5 2 SETS OF BANNED TRAYS ARE USED IN CARTON BOX WHEN PRODUCTS ARE STORED MAXIMUM.

| | | |
|------------|-------------|-----------------|
| HRS | DRAWING NO. | EDC3-127281-00 |
| | PART NO. | TM25RS-5CNA-88 |
| | CODE NO. | CL222-2967-7-00 |
| | | 3/2 |