



Chipsmall Limited consists of a professional team with an average of over 10 year of expertise in the distribution of electronic components. Based in Hongkong, we have already established firm and mutual-benefit business relationships with customers from,Europe,America and south Asia,supplying obsolete and hard-to-find components to meet their specific needs.

With the principle of “Quality Parts,Customers Priority,Honest Operation,and Considerate Service”,our business mainly focus on the distribution of electronic components. Line cards we deal with include Microchip,ALPS,ROHM,Xilinx,Pulse,ON,Everlight and Freescale. Main products comprise IC,Modules,Potentiometer,IC Socket,Relay,Connector.Our parts cover such applications as commercial,industrial, and automotives areas.

We are looking forward to setting up business relationship with you and hope to provide you with the best service and solution. Let us make a better world for our industry!



Contact us

Tel: +86-755-8981 8866 Fax: +86-755-8427 6832

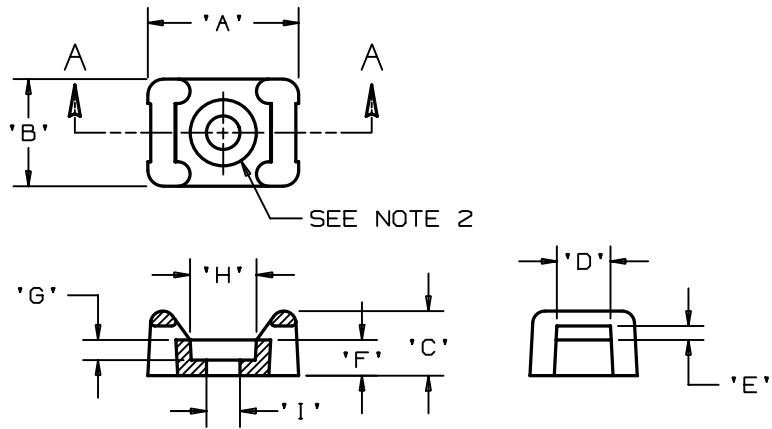
Email & Skype: info@chipsmall.com Web: www.chipsmall.com

Address: A1208, Overseas Decoration Building, #122 Zhenhua RD., Futian, Shenzhen, China



THIS COPY IS PROVIDED ON A RESTRICTED BASIS AND IS NOT TO BE USED IN ANY WAY DETRIMENTAL TO THE INTERESTS OF PANDUIT CORP.

PANDUIT PART NO.*	RECOMMENDED FASTENER	'A'	'B'	'C'	'D' ±0.010 ±(0.25)	'E' +0.020 +(0.51)	'F'	'G' 'REF'	'H' 'REF'	'I' 'REF'	USE WITH THESE CABLE TIE CROSS SECTIONS	WEIGHT (g) lbs/100 pcs.
TM2S8-100	#8 (M4) SCREW	0.590 (14.98)	0.378 (9.6)	0.271 (6.88)	0.215 (5.46)	0.058 (1.5)	0.152 (3.86)	0.102 (2.59)	0.332	0.176	MINIATURE INTERMEDIATE STANDARD	0.065 (29.5)



SECTION A-A

- NOTES:
 *1. SEE CURRENT PRICE SHEET FOR PART NUMBER SUFFIX DESIGNATION FOR PACKAGE SIZE.
 2. HOLE DIMENSIONS SHOULD ACCOMMODATE SPECIFIED RECOMMENDED FASTENER.

DIMENSIONS IN BRACKETS ARE METRIC [mm]

CAD FILENAME/LAYERS
G00239CJ_PB_TM2S8_04

PANDUIT CORP.

TINLEY PARK, ILLINOIS

TIE MOUNT - TM2S8-100

UNLESS OTHERWISE SPECIFIED,
 DIMENSIONAL TOLERANCES ARE:
 (.X) ±0.05 [1.3] (.XXX) ±0.020 (0.51)
 (.XX) ± ANGLES ± 5°

UNLESS OTHERWISE SPECIFIED,
 ALL DIMENSIONS ARE GIVEN
 IN INCHES, THIRD ANGLE PROJECTION.

DRAWN BY MDE
 DATE 3-07-96
 CHK'D

MAT'L:
 WEATHER RESISTANT POLYPROPYLENE

SCALE NONE

DRAWING NO. GB0239CJ
 DWG SIZE A

REV	DATE	BY	CHK	DESCRIPTION	ECN	R	CUST	SUP
4	1-15-02	LGG		ADDED DIM 'H' & 'I' TO TABLE ADDED 'REF' TO DIM 'G'	GB0239CJ	4		
3	12-21-00	CGSM		REMOVED DIMS 'G' AND 'J', MADE DIM 'H' INTO 'G', ADDED NOTE 2	GB0239CJ	3		
2	11-15-99	JAD		Revised dimension A,C,D,F,H,& J	GB0239CJ	2		
1	6-12-97	JAD		REVISED DATE IN TITLE BLOCK	GB0239CJ	1		
R	03-07-96	MDE		INITIAL RELEASE	GB0239CJ	R		