



Chipsmall Limited consists of a professional team with an average of over 10 year of expertise in the distribution of electronic components. Based in Hongkong, we have already established firm and mutual-benefit business relationships with customers from,Europe,America and south Asia,supplying obsolete and hard-to-find components to meet their specific needs.

With the principle of “Quality Parts,Customers Priority,Honest Operation,and Considerate Service”,our business mainly focus on the distribution of electronic components. Line cards we deal with include Microchip,ALPS,ROHM,Xilinx,Pulse,ON,Everlight and Freescale. Main products comprise IC,Modules,Potentiometer,IC Socket,Relay,Connector.Our parts cover such applications as commercial,industrial, and automotives areas.

We are looking forward to setting up business relationship with you and hope to provide you with the best service and solution. Let us make a better world for our industry!



Contact us

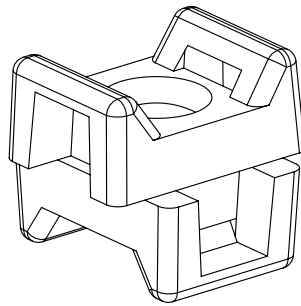
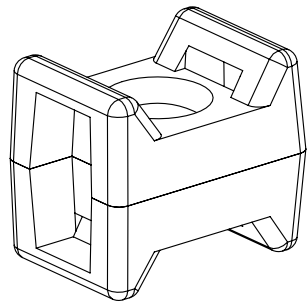
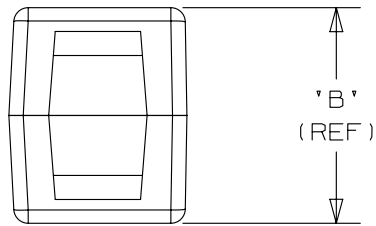
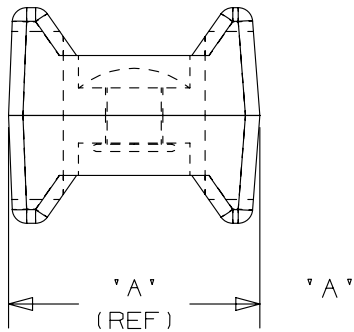
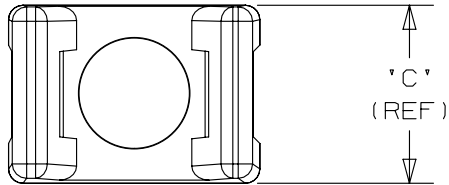
Tel: +86-755-8981 8866 Fax: +86-755-8427 6832

Email & Skype: info@chipsmall.com Web: www.chipsmall.com

Address: A1208, Overseas Decoration Building, #122 Zhenhua RD., Futian, Shenzhen, China



PANDUIT PART NO. *	DIMENSIONS			USE WITH ANY OF THESE CABLE TIES	WEIGHT lbs / 100 (g) / pcs.
	'A'	'B'	'C'		
TM3-X2--	0.87 (22.10)	0.75 (19.05)	0.62 (15.75)	M, I, S, LH	0.97 (439.9)
TM1-X2--	0.52 (13.21)	0.46 (11.68)	0.32 (8.13)	M	0.17 (77.1)



ROTATED 90°

NOTES:

- SEE CURRENT PRICE SHEET FOR PART NUMBER SUFFIX DESIGNATION FOR PACKAGE SIZE AND COLOR OPTIONS.
- CABLE TIE CROSS-SECTION CODE:
M = MINATURE
I = INTERMEDIATE
S = STANDARD
LH = LIGHT HEAVY
- RIVET MATERIAL: 5056-S ALUMINUM

SEE www.panduit.com FOR CURRENT PART NUMBER SUFFIX DESIGNATION, PACKAGE SIZE AND PART COLOR.

DIMENSIONS IN BRACKETS ARE METRIC. {MM}

TITLE				SWIVEL TIE MOUNT - (TM_-X2-_-)			
ITEM REVISION NAME				10B015IN/00			
DATASET FILE NAME				10B015IN/00_DC_GB244BA_REV_05			
UNLESS OTHERWISE SPECIFIED, DIMENSIONAL TOLERANCES ARE: IN [mm]				PANDUIT			
.x ± .1 [2.54] .xxx ± .005 [.127] .xx ± .01 [.25] ANGLES ± 5 °							
				THIRD ANGLE PROJECTION			
DRAWING NUMBER:				GB2446BA			
DRAWN BY	DATE	CHK	SCALE	SHT 1 OF 1		SIZE	
JAD	11/01/00	MPH	1.5X			A4	

5	2/28/13	BWG	MPH	PBC	REMOVED MOUNT MATERIAL NOTE, ADDED STANDARD MATERIAL WWW.PANDUIT.COM NOTE. CREATED NEW CADFILE.	GB2446BA
REV	DATE	BY	CHK	APR	DESCRIPTION	ECN