



Chipsmall Limited consists of a professional team with an average of over 10 year of expertise in the distribution of electronic components. Based in Hongkong, we have already established firm and mutual-benefit business relationships with customers from,Europe,America and south Asia,supplying obsolete and hard-to-find components to meet their specific needs.

With the principle of “Quality Parts,Customers Priority,Honest Operation,and Considerate Service”,our business mainly focus on the distribution of electronic components. Line cards we deal with include Microchip,ALPS,ROHM,Xilinx,Pulse,ON,Everlight and Freescale. Main products comprise IC,Modules,Potentiometer,IC Socket,Relay,Connector.Our parts cover such applications as commercial,industrial, and automotives areas.

We are looking forward to setting up business relationship with you and hope to provide you with the best service and solution. Let us make a better world for our industry!



Contact us

Tel: +86-755-8981 8866 Fax: +86-755-8427 6832

Email & Skype: info@chipsmall.com Web: www.chipsmall.com

Address: A1208, Overseas Decoration Building, #122 Zhenhua RD., Futian, Shenzhen, China



| | | | | | | | | | | | |
|---|-------|--------------------------|----|------|------|---|-------|--------------------------|----|------|------|
| △ | COUNT | DESCRIPTION OF REVISIONS | BY | CHKD | DATE | △ | COUNT | DESCRIPTION OF REVISIONS | BY | CHKD | DATE |
| △ | | | | | | △ | | | | | |

| | | | | | | | | | | | |
|---------------------|-----------------------------|-----------------|-----------------|--|---------|---------------------------|--------------|--|--|--|--|
| APPLICABLE STANDARD | | | | | | | | | | | |
| RATING | OPERATING TEMPERATURE RANGE | -25 °C TO 60 °C | | | | STORAGE TEMPERATURE RANGE | — °C TO — °C | | | | |
| | VOLTAGE | 125 V AC (TM) | 10.5 V DC (PWJ) | | CURRENT | 0.5 A DC (TM) | 2 A DC (PWJ) | | | | |

SPECIFICATIONS

| ITEM | TEST METHOD | REQUIREMENTS | QT | AT |
|------|-------------|--------------|----|----|
|------|-------------|--------------|----|----|

| | | | | |
|---------------------|---------------------------------------|-----------------------|---|---|
| CONSTRUCTION | | | | |
| GENERAL EXAMINATION | VISUALLY AND BY MEASURING INSTRUMENT. | ACCORDING TO DRAWING. | ○ | ○ |
| MARKING | CONFIRMED VISUALLY. | | ○ | ○ |

ELECTRIC CHARACTERISTICS

| | | | | |
|-----------------------|--|----------------------------|---|---|
| CONTACT RESISTANCE | 100 mA DC (OR 1000 Hz AC). MEASUREMENT POINTS SHALL BE AS FOLLOWS. TM | 200 mΩ MAX. | ○ | — |
| | <p>(ONE EXAMPLE OF CONNECTOR CONFIGURATION IS SHOWN.)</p> | | | |
| | 100 mA DC (OR 1000 Hz AC). MEASUREMENT POINTS SHALL BE AS FOLLOWS. PWJ | 30 mΩ MAX. | ○ | — |
| | | | | |
| INSULATION RESISTANCE | 100 V DC. | 100 MΩ MIN. | ○ | — |
| VOLTAGE PROOF | 500 V AC FOR 1 min. | NO FLASHOVER OR BREAKDOWN. | ○ | ○ |

MECHANICAL CHARACTERISTICS

| | | | | | |
|---|--|--|---|---|---|
| MECHANICAL OPERATION | TM | 200 TIMES INSERTIONS AND EXTRACTIONS. | ① CONTACT RESISTANCE: 220 mΩ MAX. ② NO DAMAGE, CRACK AND LOOSENESS, OF PARTS. | ○ | — |
| | PWJ | 200 TIMES INSERTIONS AND EXTRACTIONS. (EIAJ RC - 5320-8) | ① CONTACT RESISTANCE: 100 mΩ MAX. ② NO DAMAGE, CRACK AND LOOSENESS, OF PARTS. | ○ | — |
| VIBRATION | FREQUENCY 10 TO 55 Hz, SINGLE AMPLITUDE 1.5 mm, — m/s ² AT 2 h, FOR 3 DIRECTIONS. | | ① NO ELECTRICAL DISCONTINUITY OF — μs. ② CONTACT RESISTANCE: — mΩ MAX. | ○ | — |
| SHOCK | 490 m/s ² DIRECTIONS OF PULSE 11 ms AT 3 TIME FOR 3 DIRECTION. | | ③ NO DAMAGE, CRACK AND LOOSENESS, OF PARTS. | ○ | — |
| CONTACT INSERTION AND EXTRACTION FORCES (PWJ CONTACT) | OUTER DIAMETER: 4.8±0.06 INNER DIAMETER: 1.75±0.06 (EIAJ RC - 5320-8) | | INSERTION FORCE 5 N MIN TO 20 N MAX EXTRACTION FORCE 4 N MIN TO 15 N MAX | ○ | — |

| | | | | | | | |
|---------|--|-------------|-------------|-----|-----|-----|-----------------|
| REMARKS | 8/16/04 | 製 図 | 担 当 | 検 査 | 査 閲 | 承 認 | 出 国 |
| | Unless otherwise specified, refer to JIS C 5402. | 技術 26.15 鈴木 | 技術 26.15 鈴木 | 田中 | 田中 | 田中 | HRS 8.10.01 USA |

| | | | |
|--|--------------------------|---------------------------|-----|
| Note QT:Qualification Test AT:Assurance Test ○:Applicable Test | | PART NO. TM5RT1 - 1204PWJ | |
| CODE NO.(OLD) CL | DRAWING NO. ELC4 - 43183 | CODE NO. 222-3539-9 | 1/2 |

TO
2



SPECIFICATIONS

| ITEM | TEST METHOD | REQUIREMENTS | QT | AT |
|--------------------------------------|--|---|----|----|
| ENVIRONMENTAL CHARACTERISTICS | | | | |
| DAMP HEAT (STEADY STATE) | EXPOSED AT 60 °C, 90 TO 95 %, 500 h. | ① CONTACT RESISTANCE: \leq $m\Omega$ MAX. ② INSULATION RESISTANCE: 1 M Ω MIN. (AT HIGH HUMIDITY) ③ INSULATION RESISTANCE: 10 M Ω MIN. (AT DRY) ④ NO DAMAGE, CRACK AND LOOSENESS, OF PARTS. | ○ | — |
| RAPID CHANGE OF TEMPERATURE | TEMPERATURE -55 \pm 3 \rightarrow 5 TO 35 \rightarrow 85 \pm 2 \rightarrow 5 TO 35°C TIME 30 TO 35 \rightarrow 5 MAX \rightarrow 30 TO 35 \rightarrow 5 MAX min UNDER 5 CYCLES. | ① CONTACT RESISTANCE: \leq $m\Omega$ MAX. ② INSULATION RESISTANCE: \geq M Ω MIN. ③ NO DAMAGE, CRACK AND LOOSENESS, OF PARTS. | ○ | — |
| CORROSION SALT MIST | EXPOSED IN 5 % SALT WATER SPRAY FOR 48 h. | ① CONTACT RESISTANCE: \leq $m\Omega$ MAX. ② NO DAMAGE, CRACK AND LOOSENESS, OF PARTS. | ○ | — |
| RESISTANCE TO SOLDERING HEAT | SOLDER TEMPERATURE, 260 \pm 5 °C FOR IMMERSION, DURATION, 5 \pm 1 s. (WHEN USING FLOW SOLDER) | NO DEFORMATION OF CASE AND EXCESSIVE LOOSENESS OF THE TERMINALS. | ○ | — |
| DIP CONDITION | PRE-HEAT SOLDER TEMPERATURE: 90°C ~ 130°C IMMERSION TIME 3 \pm 0.5 sec. SOLDER TEMPERATURE: 230°C \pm 5°C (WHEN USING FLOW SOLDER) | NO DEFORMATION IN APPEARANCE OR SOLDERLESS ON CONTACT SURFACE ETC. | ○ | — |
| REMARKS | | | | |

REMARKS

| | | | | | |
|-----|-----|-----|-----|-----|-----|
| 製 図 | 担 当 | 検 査 | 査 閲 | 承 認 | 出 国 |
| | | | | | |

8/16/04 (長)

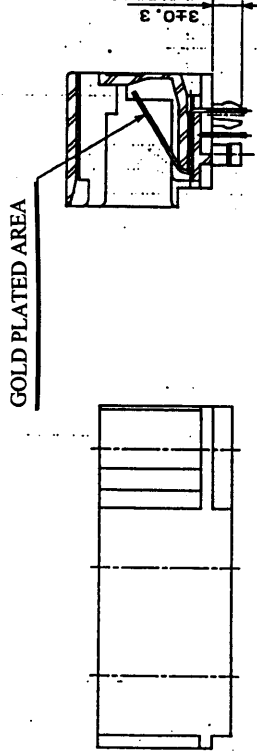
Unless otherwise specified, refer to JIS C 5402.

Note QT:Qualification Test AT:Assurance Test ○:Applicable Test

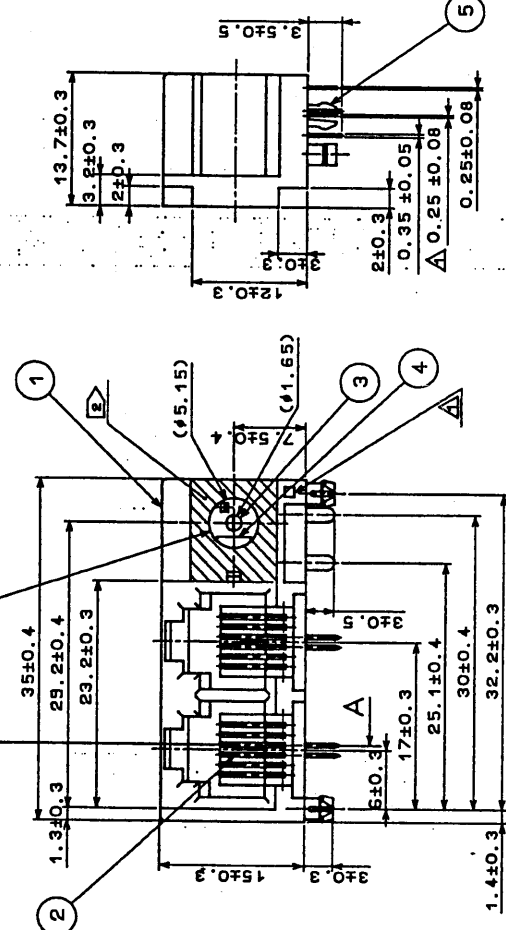
| | | |
|--------------------------------------|------------------------------------|-------------------------------------|
| HRS HIROSE ELECTRIC CO., LTD. | SPECIFICATION SHEET | PART NO. TM5RT1 - 1204PWJ |
| CODE NO.(OLD) CL | DRAWING NO. ELC4 - 43183 | CODE NO. 222-3539-9 |
| | | 2/2 |



| | | | | | | | |
|----|-----------|------|--------|-----|-----|------|-----|
| Δ3 | RE-E-0620 | 訂正配番 | 年月日 | Δ09 | 年月日 | 訂正配番 | 年月日 |
| △ | △ | △ | 2.7.17 | △ | | △ | |



VIEW AA
EXTERNAL POWER SUPPLY JACK PORTION



NOTE
1 APPLICABLE PLUG OF THE EXTERNAL POWER SUPPLY JACK PORTION IS IN ACCORDANCE WITH EIAJ, RC-5320 VOLTAGE CLASSIFICATION 3.
2 HATCHING AREA IS ROUGH FINISH.

| | | |
|-------------|-----------------|--|
| 3 | COPPER ALLOY | SILVER PLATING |
| 2 | PHOSPHOR BRONZE | SELECTIVE GOLD PLATING + TIN-LEAD PLATE |
| 1 | PBT | (BLACK) UL94V-0 |
| NO MATERIAL | FINISH, REMARKS | |
| 5 | COPPER ALLOY | TIN-LEAD PLATING |
| 4 | COPPER ALLOY | SILVER PLATING |
| NO MATERIAL | FINISH, REMARKS | |

8/16/01

承認書

承認品名: TM5RT H5

承認規格: JIS B 1011 USA

承認年月日: 2001.08.10

承認場所: 東京

承認者: 田中

承認機材: TM5RT1-1204PWJ

承認品番: ADC3-43183-5

承認品名: 外部電源ジャック部品

承認規格: JIS B 1011 USA

承認年月日: 2001.08.10

承認場所: 東京

承認者: 田中

承認機材: TM5RT1-1204PWJ

承認品番: CL222-3539-9

FOR REFERENCE ONLY
Subject to change without notice

| | |
|----|----|
| 原圖 | 02 |
|----|----|