



Chipsmall Limited consists of a professional team with an average of over 10 year of expertise in the distribution of electronic components. Based in Hongkong, we have already established firm and mutual-benefit business relationships with customers from,Europe,America and south Asia,supplying obsolete and hard-to-find components to meet their specific needs.

With the principle of “Quality Parts,Customers Priority,Honest Operation,and Considerate Service”,our business mainly focus on the distribution of electronic components. Line cards we deal with include Microchip,ALPS,ROHM,Xilinx,Pulse,ON,Everlight and Freescale. Main products comprise IC,Modules,Potentiometer,IC Socket,Relay,Connector.Our parts cover such applications as commercial,industrial, and automotives areas.

We are looking forward to setting up business relationship with you and hope to provide you with the best service and solution. Let us make a better world for our industry!



## Contact us

Tel: +86-755-8981 8866 Fax: +86-755-8427 6832

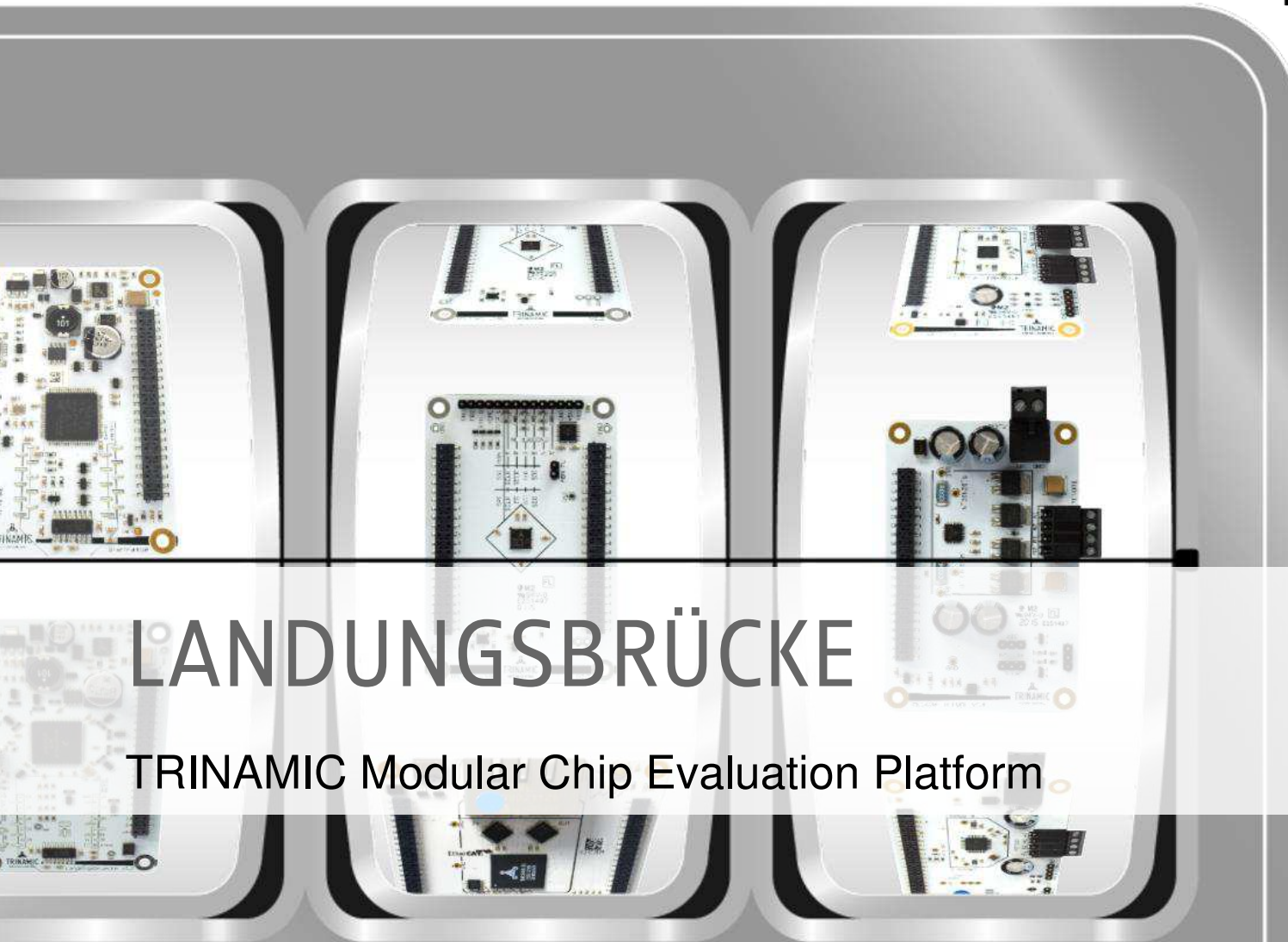
Email & Skype: info@chipsmall.com Web: www.chipsmall.com

Address: A1208, Overseas Decoration Building, #122 Zhenhua RD., Futian, Shenzhen, China





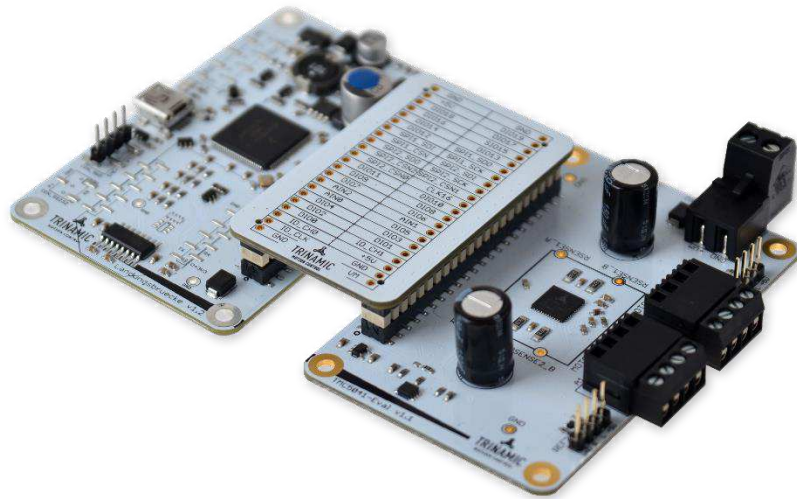
**TRINAMIC**  
MOTION CONTROL



# LANDUNGSBRÜCKE

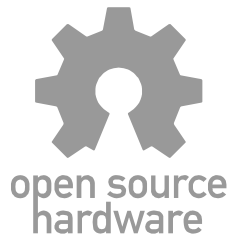
TRINAMIC Modular Chip Evaluation Platform

# LANDUNGSBRÜCKE

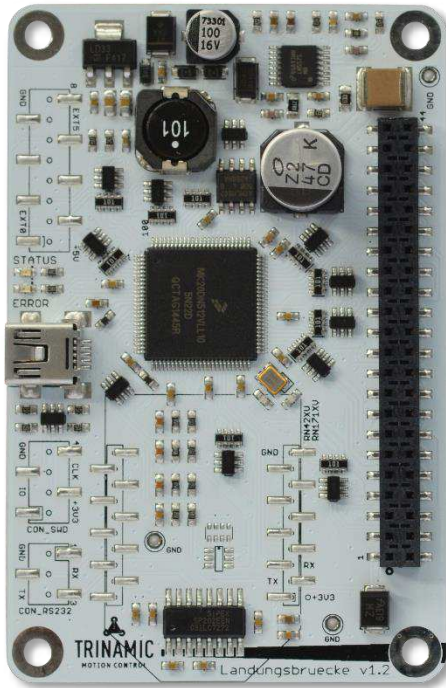


## Modular IC Evaluation

- Flexible
- Easy to Use
- Open Source Hardware
- Proven Reference Designs



# LANDUNGSBRÜCKE

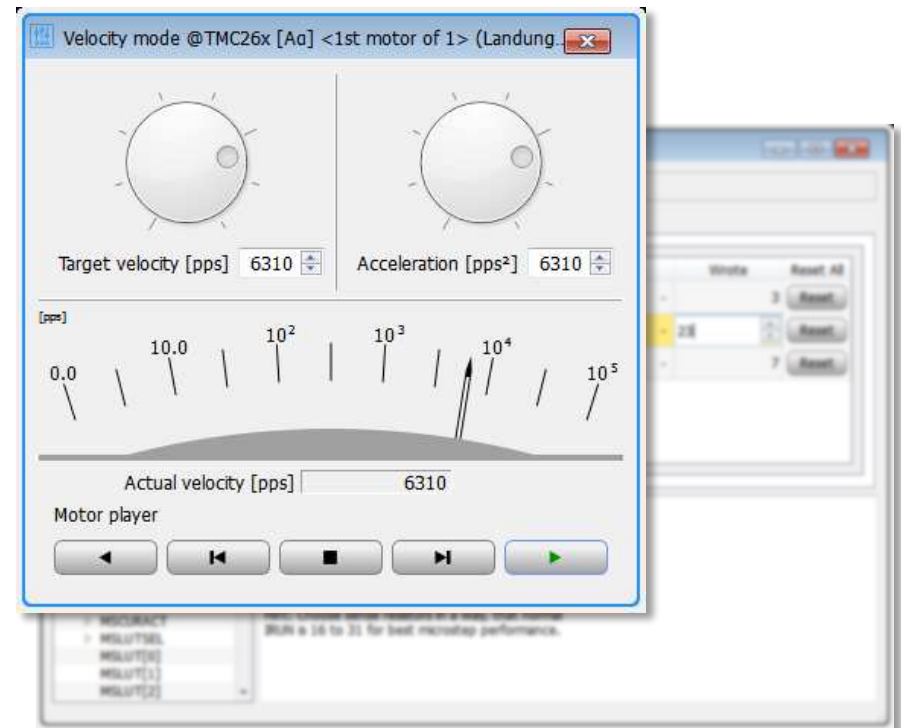
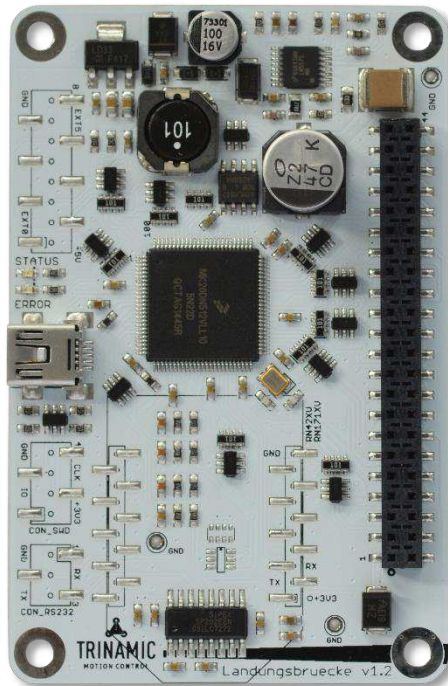


- MCU Board with Freescale Kinetis M4
- Connects to TMCL IDE easy Evaluation Tools
- open source Firmware and reference Code

# LANDUNGSBRÜCKE

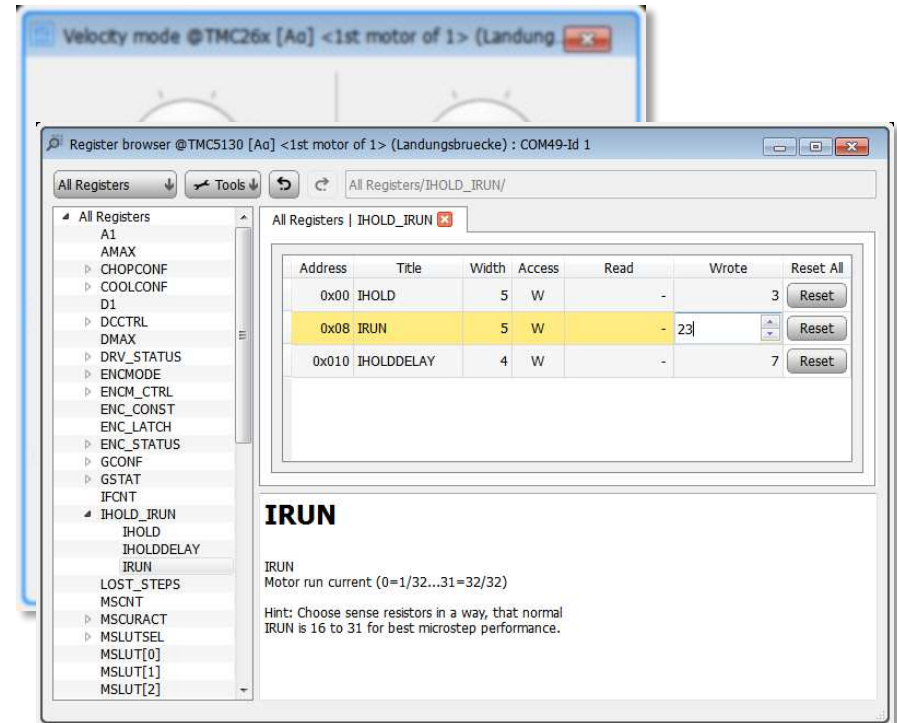
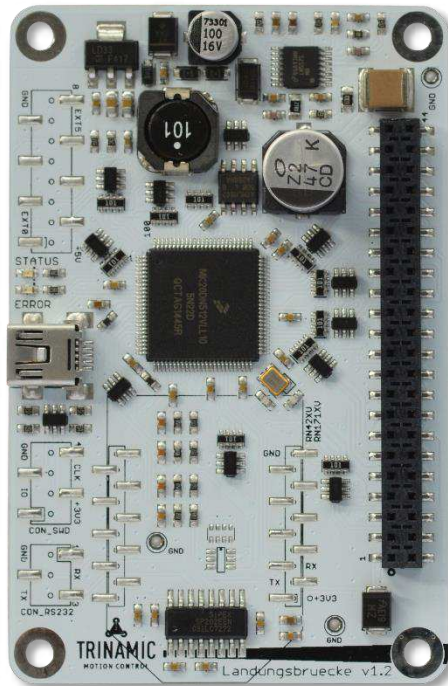


## Easy Start Tools



# LANDUNGSBRÜCKE

## Deep Dive into Registers



Address	Title	Width	Access	Read	Wrote	Reset All
0x00	IHOLD	5	W	-	3	Reset
0x08	IRUN	5	W	-	23	Reset
0x010	IHOLDDELAY	4	W	-	7	Reset

**IRUN**

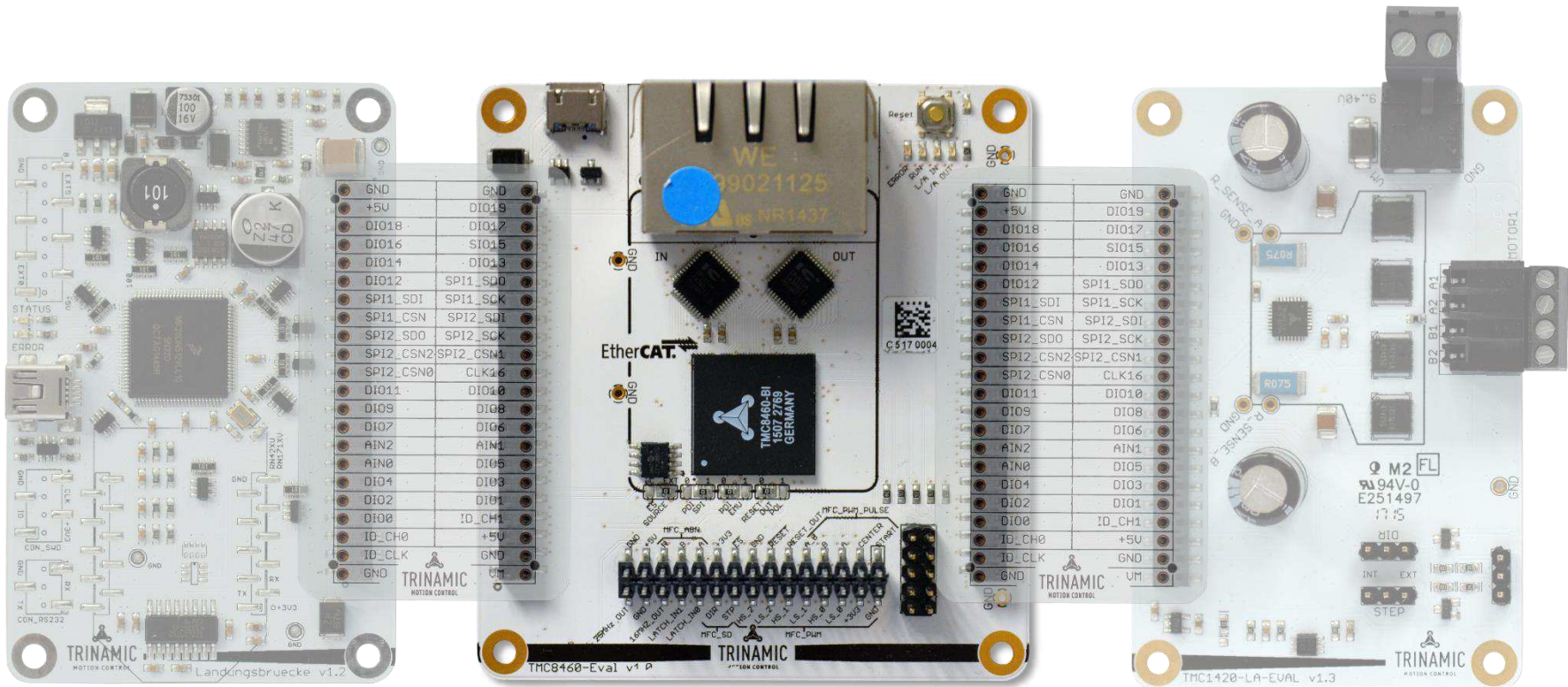
IRUN  
Motor run current (0=1/32...31=32/32)

Hint: Choose sense resistors in a way, that normal IRUN is 16 to 31 for best microstep performance.

# BUS INTERFACES



**TRINAMIC**  
MOTION CONTROL



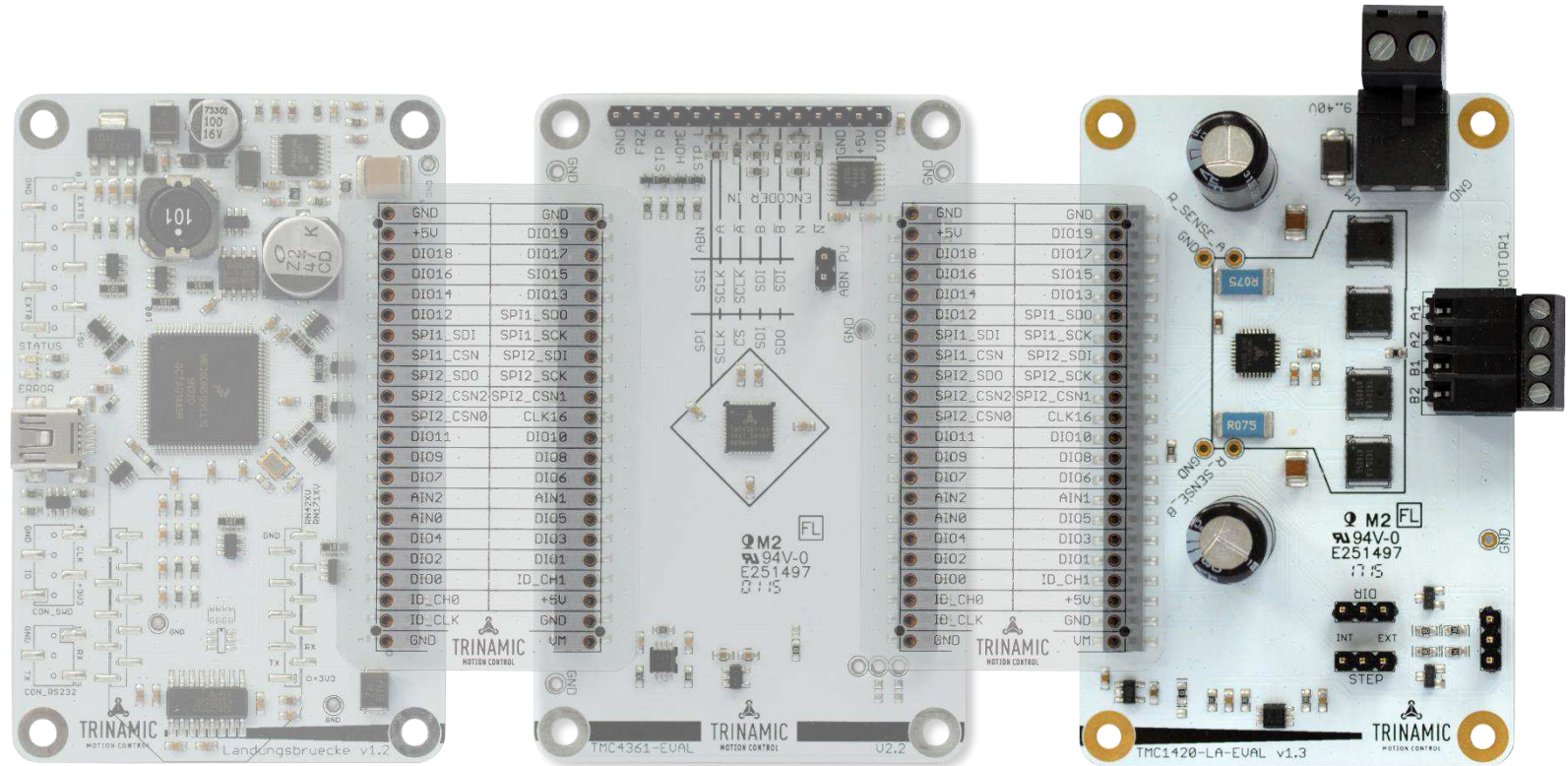




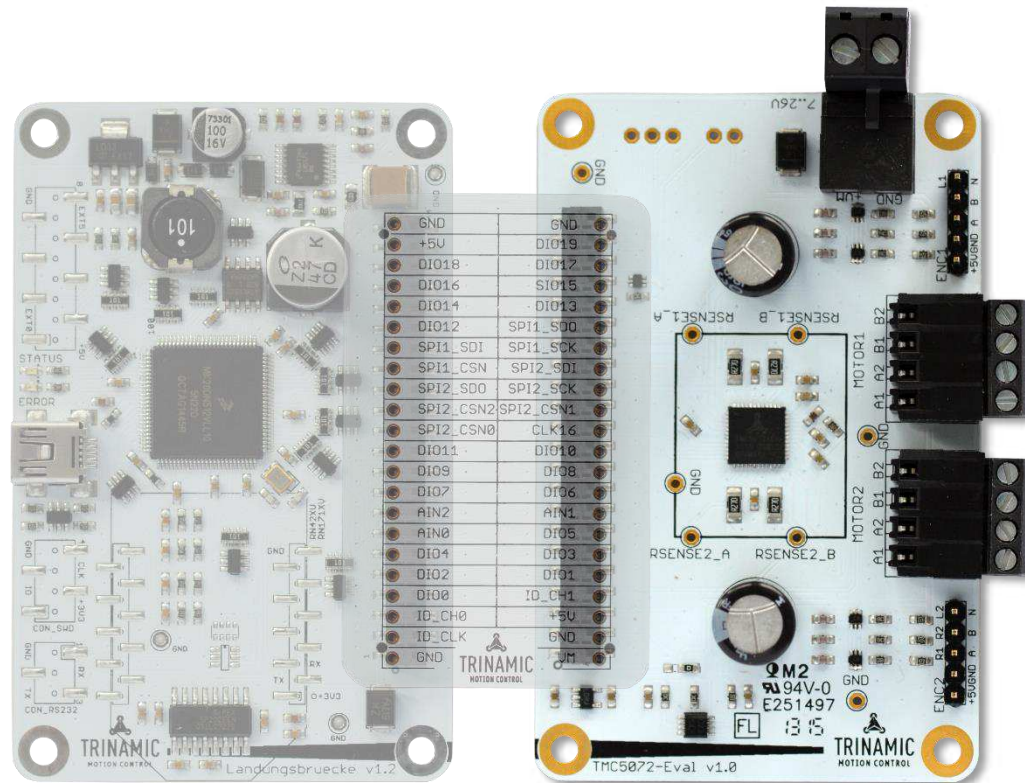
# STEPPER MOTOR DRIVERS



**TRINAMIC**  
MOTION CONTROL



# STEPPER MOTOR cDRIVERS





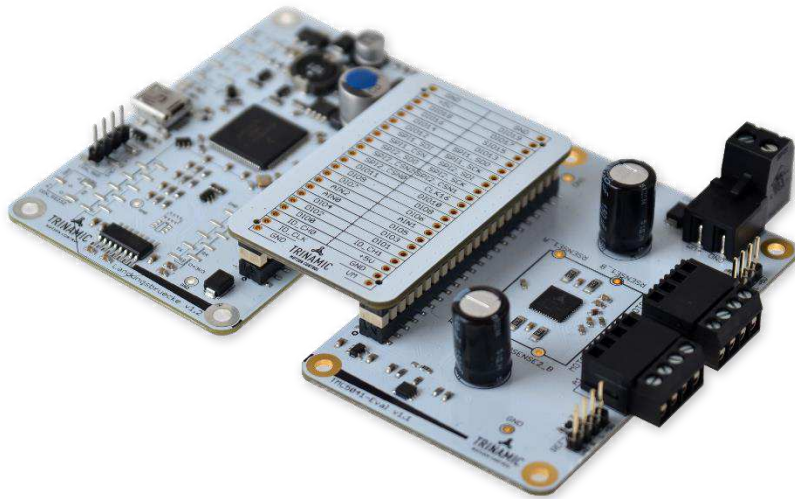
**TRINAMIC**  
MOTION CONTROL



**NOW AVAILABLE!**

Kits and Single Boards

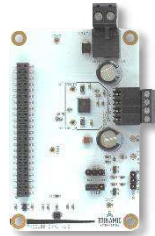
# EVAL-KITS



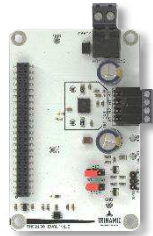
Kits come with everything necessary to start evaluation from the box:

- MCU Board
- Eselsbrücke Interposer Board
- Motor Driver Board
- USB Cable

# STEPPER DRIVER



TMC2100-EVAL



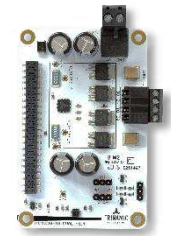
TMC2130-EVAL



TMC2660-EVAL



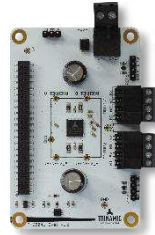
TMC1420-EVAL



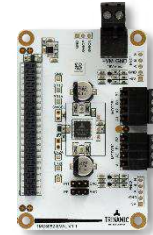
TMC1620-EVAL

Supply Voltage	7...46V	7...46V	9...29V	9...40V	9...60V
Current (RMS)	1.1A	1.1A	3A	4A	4.5A
SPI	-	✓	✓	✓	✓
S/D	✓	✓	✓	✓	✓
stealthChop™	✓	✓	-	-	-
spreadCycle™	✓	✓	✓	✓	✓
coolStep™	-	✓	✓	✓	✓
stallGuard2™	-	✓	✓	✓	✓
dcStep™ enabled	-	✓	-	-	-
Kit Available	✓	✓	-	✓	✓

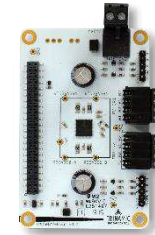
# STEPPER cDRIVER



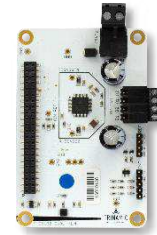
TMC5041-EVAL



TMC5062-EVAL



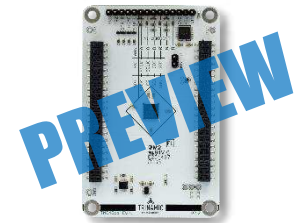
TMC5072-EVAL



TMC5130-EVAL

Supply Voltage	7...26V	7...18V	7...26V	7...46V
Current (RMS)	1.1A	1.1A	1.1A	1.4A
SPI	✓	✓	✓	✓
S/D	✓	✓	✓	✓
stealthChop™	✓	-	✓	✓
spreadCycle™	✓	✓	✓	✓
coolStep™	✓	✓	✓	✓
stallGuard2™	✓	✓	✓	✓
dcStep™ enabled	✓	✓	✓	✓
Kit Available	✓	✓	✓	✓

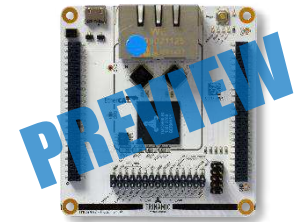
# MOTION CONTROLLER



**TMC4361-EVAL**

Number of Axes	1
SPI	✓
S/D	✓
Encoder Interface	a/b/n quadrature
Closed Loop Position Control	✓
Closed Loop Current Control	✓
sixPoint™ Ramps	✓
Advanced S-Shape Ramps	✓
Supported Drivers	TMC26x, TMC21x0, TMC24x
Kit Available	-

# BUS INTERFACES



**TMC8460**

Bus Interface	EtherCAT
SPI	✓
S/D	✓
PWM	3 Channels
Encoder Interface	a/b/n quadrature
Standalone Mode	(USB Supply)
Kit Available	✓