



Chipsmall Limited consists of a professional team with an average of over 10 year of expertise in the distribution of electronic components. Based in Hongkong, we have already established firm and mutual-benefit business relationships with customers from,Europe,America and south Asia,supplying obsolete and hard-to-find components to meet their specific needs.

With the principle of "Quality Parts,Customers Priority,Honest Operation,and Considerate Service",our business mainly focus on the distribution of electronic components. Line cards we deal with include Microchip,ALPS,ROHM,Xilinx,Pulse,ON,Everlight and Freescale. Main products comprise IC,Modules,Potentiometer,IC Socket,Relay,Connector.Our parts cover such applications as commercial,industrial, and automotives areas.

We are looking forward to setting up business relationship with you and hope to provide you with the best service and solution. Let us make a better world for our industry!



Contact us

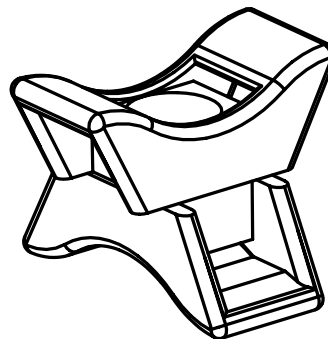
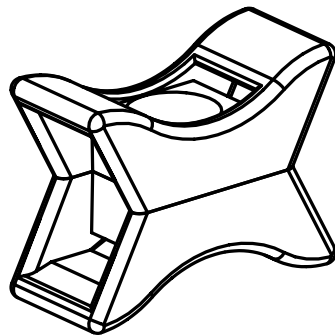
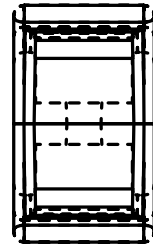
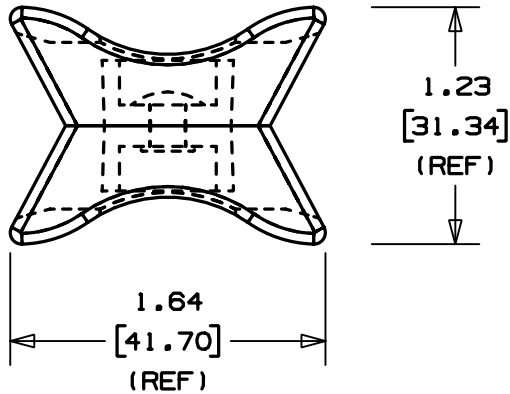
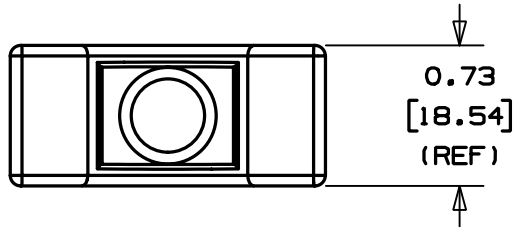
Tel: +86-755-8981 8866 Fax: +86-755-8427 6832

Email & Skype: info@chipsmall.com Web: www.chipsmall.com

Address: A1208, Overseas Decoration Building, #122 Zhenhua RD., Futian, Shenzhen, China



THIS COPY IS PROVIDED ON A RESTRICTED BASIS AND IS NOT TO BE USED IN ANY WAY DETRIMENTAL TO THE INTERESTS OF PANDUIT CORP.



ROTATED 90°

PANDUIT PART NO. *	USE WITH ANY OF THESE CABLE TIES	WEIGHT lbs / 50 (g) / pcs
TMEH-X2-__	EH	1.14 (517.1)

NOTES:

- SEE CURRENT PRICE SHEET FOR PART NUMBER SUFFIX DESIGNATION FOR PACKAGE SIZE AND COLOR.
- CABLE TIE CROSS-SECTION CODE:
EH = EXTRA HEAVY
- MOUNT MATERIAL: WEATHER RESISTANT NYLON 6/6
RIVET MATERIAL: 5056-S ALUMINUM

DIMENSIONS IN BRACKETS ARE METRIC [mm]

CAD FILENAME/LAYERS G02446BB_PC_TMEHX2_03

PANDUIT CORP. TINLEY PARK, ILLINOIS

SWIVEL TIE MOUNT -
HEAVY (TMEH-X2-__)

UNLESS OTHERWISE SPECIFIED,
DIMENSIONAL TOLERANCES ARE:
(.X) ±0.05 (1.3) (.XXX) ±0.010 (0.25)
(.XX) ±0.02 (0.5) ANGLES ± 5°

UNLESS OTHERWISE SPECIFIED,
ALL DIMENSIONS ARE GIVEN
IN INCHES, THIRD ANGLE PROJECTION.

DRAWN BY JAD

MAT'L:

SCALE FULL

3

8/27/05

JAD

UPDATE RIVET MATERIL FROM STEEL
TO ALUMINUM

GB2446BB

3

DATE
11/01/00

SEE NOTE 3

DRAWING NO.

GB2446BB

DWG

A
SIZE

REV

DATE

BY

CHK

DESCRIPTION

ECN - R

CUST

SUP