



Chipsmall Limited consists of a professional team with an average of over 10 year of expertise in the distribution of electronic components. Based in Hongkong, we have already established firm and mutual-benefit business relationships with customers from,Europe,America and south Asia,supplying obsolete and hard-to-find components to meet their specific needs.

With the principle of "Quality Parts,Customers Priority,Honest Operation,and Considerate Service",our business mainly focus on the distribution of electronic components. Line cards we deal with include Microchip,ALPS,ROHM,Xilinx,Pulse,ON,Everlight and Freescale. Main products comprise IC,Modules,Potentiometer,IC Socket,Relay,Connector.Our parts cover such applications as commercial,industrial, and automotives areas.

We are looking forward to setting up business relationship with you and hope to provide you with the best service and solution. Let us make a better world for our industry!



Contact us

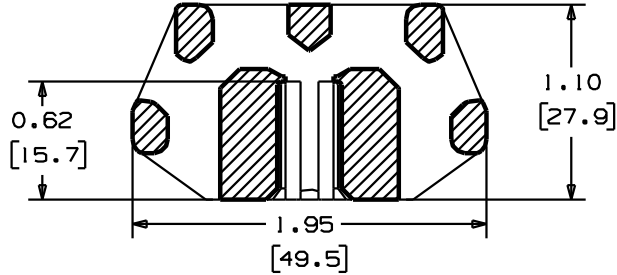
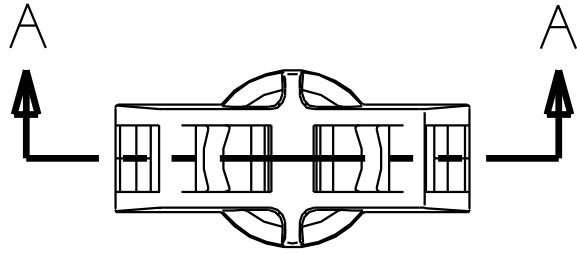
Tel: +86-755-8981 8866 Fax: +86-755-8427 6832

Email & Skype: info@chipsmall.com Web: www.chipsmall.com

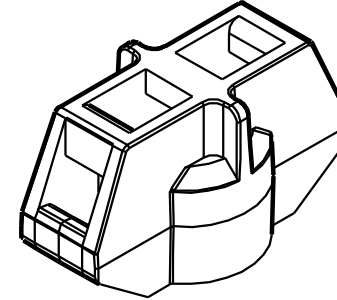
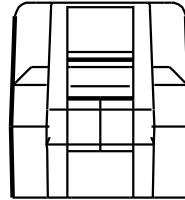
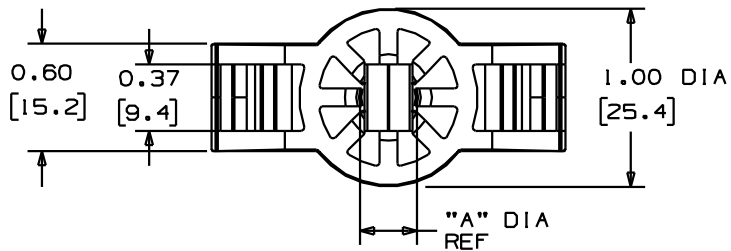
Address: A1208, Overseas Decoration Building, #122 Zhenhua RD., Futian, Shenzhen, China



THIS COPY IS PROVIDED ON A RESTRICTED BASIS AND IS NOT TO BE USED IN ANY WAY DETRIMENTAL TO THE INTERESTS OF PANDUIT CORP.



SECTION A - A



*NOTES:

- SEE www.panduit.com FOR PART NUMBER SUFFIX DESIGNATION CONCERNING PACKAGE SIZE, PART MATERIAL AND PART COLOR.

PANDUIT PART NUMBER*	RECOMMENDED MOUNT STUD	MINIMUM INSTALLED STUD PROTRUSION	DIMENSION "A" REF	WEIGHT lbs/100 pcs (g)/100 pcs	FOR USE WITH THE FOLLOWING PANDUIT CABLE TIES
TMSTHS10	3/8" DIA M10	0.050 (12.7)	0.344 (8.7)	2.67 (1210)	MINIATURE INTERMEDIATE STANDARD LIGHT HEAVY HEAVY
TMSTHS11	7/16" DIA		.387 (9.8)	2.64 (1200)	
TMSTHS12	M12		0.433 (11.0)	2.60 (1180)	
TMSTHS13	1/2" DIA		0.476 (12.1)	2.54 (1150)	
TMSTHS16	5/8" DIA M16		0.610 (15.5)	2.39 (1090)	
TMSTHS19	3/4" DIA		0.727 (18.5)	2.31 (1050)	

DIMENSIONS IN BRACKETS ARE METRIC [mm]

TITLE TMSTHS TIE MOUNT FOR THREADED STUD		CUSTOMER DRAWING	
ITEM REVISION NAME G03597CS/03		PANDUIT	
DATASET FILE NAME G03597CS_DC_GB0239CY/10			
UNLESS OTHERWISE SPECIFIED, DIMENSIONAL TOLERANCES ARE: IN [mm]		MATERIAL: NYLON 6/6	
.x : 0.05 [1.3] .xxx : 0.010 [0.25]		DRAWING NUMBER: GB0239CY	
.xx : 0.02 [0.5] ANGLES : 5°		THIRD ANGLE PROJECTION	
DRAWN BY MLT		SCALE 1:1	
DATE 1/12/96		SHT 1 OF 1	
DESCRIPTION REVISED OAL DIMENSION SEE ECN FOR FULL DETAILS.		SIZE A	
ECN GB0239CY/10			

D101000A/16

REV	DATE	BY	CHK	APR	DESCRIPTION	ECN
10	10/29/13	BWG	MPH	RTF	REVISED OAL DIMENSION SEE ECN FOR FULL DETAILS.	GB0239CY/10