



Chipsmall Limited consists of a professional team with an average of over 10 year of expertise in the distribution of electronic components. Based in Hongkong, we have already established firm and mutual-benefit business relationships with customers from,Europe,America and south Asia,supplying obsolete and hard-to-find components to meet their specific needs.

With the principle of “Quality Parts,Customers Priority,Honest Operation,and Considerate Service”,our business mainly focus on the distribution of electronic components. Line cards we deal with include Microchip,ALPS,ROHM,Xilinx,Pulse,ON,Everlight and Freescale. Main products comprise IC,Modules,Potentiometer,IC Socket,Relay,Connector.Our parts cover such applications as commercial,industrial, and automotives areas.

We are looking forward to setting up business relationship with you and hope to provide you with the best service and solution. Let us make a better world for our industry!



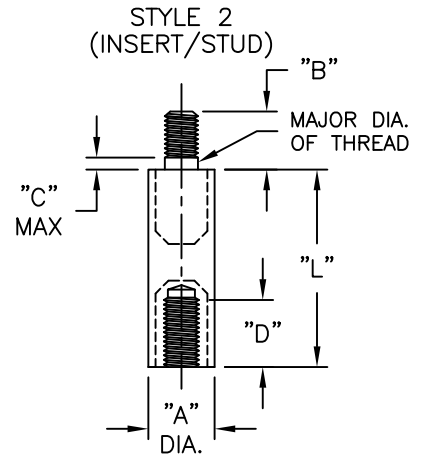
## Contact us

Tel: +86-755-8981 8866 Fax: +86-755-8427 6832

Email & Skype: info@chipsmall.com Web: www.chipsmall.com

Address: A1208, Overseas Decoration Building, #122 Zhenhua RD., Futian, Shenzhen, China





| PART NO.      | "L" BODY LENGTH | "A" BODY DIAMETER | "B" STUD LENGTH | "C" NOT THREADED | "D" INSERT DEPTH | THREAD |
|---------------|-----------------|-------------------|-----------------|------------------|------------------|--------|
| TN4-12-632    | 3/4 (19.1)      | 1/4 (6.4)         | 1/4 (6.4)       | 1/16 (1.6)       | 11/64 (4.4)      | #6-32  |
| TN4-16-632    | 1 (25.4)        |                   |                 |                  |                  |        |
| TN4-20-632    | 1-1/4 (31.8)    |                   |                 |                  |                  |        |
| TN4-24-632    | 1-1/2 (38.1)    |                   |                 |                  |                  |        |
| TN4-28-632    | 1-3/4 (44.5)    |                   |                 |                  |                  |        |
| TN4-32-632    | 2 (50.8)        | 3/8 (9.5)         | 1/4 (6.4)       | 1/16 (1.6)       | 3/16 (4.8)       | #8-32  |
| TN6-16-832    | 1 (25.4)        |                   |                 |                  |                  |        |
| TN6-20-832    | 1-1/4 (31.8)    |                   |                 |                  |                  |        |
| TN6-24-832    | 1-1/2 (38.1)    |                   |                 |                  |                  |        |
| TN6-28-832    | 1-3/4 (44.5)    |                   |                 |                  |                  |        |
| TN6-32-832    | 2 (50.8)        |                   |                 |                  |                  |        |
| TN6-36-832    | 2-1/4 (57.2)    | 1/2 (12.7)        | 9/32 (7.1)      | 3/32 (2.4)       | 3/16 (4.8)       | #10-24 |
| TN6-40-832    | 2-1/2 (63.5)    |                   |                 |                  |                  |        |
| TN8-14-1024   | 7/8 (22.3)      |                   |                 |                  |                  |        |
| TN8-20-1024   | 1-1/4 (31.8)    |                   |                 |                  |                  |        |
| TN8-24-1024   | 1-1/2 (38.1)    |                   |                 |                  |                  |        |
| TN8-28-1024   | 1-3/4 (44.5)    |                   |                 |                  |                  |        |
| TN8-32-1024   | 2 (50.8)        | 5/8 (15.9)        | 7/16 (11.1)     | 1/8 (3.2)        | 21/64 (8.3)      | 1/4-20 |
| TN8-36-1024   | 2-1/4 (57.2)    |                   |                 |                  |                  |        |
| TN8-40-1024   | 2-1/2 (63.5)    |                   |                 |                  |                  |        |
| TN10-20-1/420 | 1-1/4 (31.8)    |                   |                 |                  |                  |        |
| TN10-24-1/420 | 1-1/2 (38.1)    |                   |                 |                  |                  |        |
| TN10-28-1/420 | 1-3/4 (44.5)    |                   |                 |                  |                  |        |
| TN10-32-1/420 | 2 (50.8)        |                   |                 |                  |                  |        |
| TN10-36-1/420 | 2-1/4 (57.2)    |                   |                 |                  |                  |        |
| TN10-40-1/420 | 2-1/2 (63.5)    |                   |                 |                  |                  |        |

NOTES:  
 1. MATERIAL: NYLON 6/6 UL 94 V-2 (RMS-01),  
 COLOR: WHITE.  
 THREADED INSERTS/STUDS: BRASS (RMS-231)

|     |                                  |             |
|-----|----------------------------------|-------------|
| H   | SEE CO 200773 FOR CHANGES        | SK 04.30.12 |
| G   | SEE ECN 1270 FOR CHANGES         | SK 01.10.07 |
| F   | SEE ECN 1261 FOR CHANGES         | SK 12.06.06 |
| E   | SEE ECN 1214 FOR CHANGES         | SK 09.12.06 |
| D   | SEE ECN 1164 FOR CHANGES         | SJ 05.09.06 |
| C   | CHANGED FILE NUMBER              | SM 05.10.01 |
| B   | ADDED NOTE: MAJOR DIA. OF THREAD | JL 11.12.98 |
| A   | CONVERTED TO ACAD                | PB 08.02.94 |
| REV | DESCRIPTION                      | ENGR DATE   |

TITLE: THREADED NYLON STURDIPOST

FILE # TN

MAT'L: SEE NOTES

RE: RICHCO, INC.

DWN: P.B.

DT: 08-02-94

APP: RICHCO INC.  
 PO BOX 804238, CHICAGO, 60680  
 (773) 539-4060

DWG IN IN (MM)

FINAL

PART # SEE TABLE

PRINT TYPE CA