



Chipsmall Limited consists of a professional team with an average of over 10 year of expertise in the distribution of electronic components. Based in Hongkong, we have already established firm and mutual-benefit business relationships with customers from,Europe,America and south Asia,supplying obsolete and hard-to-find components to meet their specific needs.

With the principle of "Quality Parts,Customers Priority,Honest Operation,and Considerate Service",our business mainly focus on the distribution of electronic components. Line cards we deal with include Microchip,ALPS,ROHM,Xilinx,Pulse,ON,Everlight and Freescale. Main products comprise IC,Modules,Potentiometer,IC Socket,Relay,Connector.Our parts cover such applications as commercial,industrial, and automotives areas.

We are looking forward to setting up business relationship with you and hope to provide you with the best service and solution. Let us make a better world for our industry!



Contact us

Tel: +86-755-8981 8866 Fax: +86-755-8427 6832

Email & Skype: info@chipsmall.com Web: www.chipsmall.com

Address: A1208, Overseas Decoration Building, #122 Zhenhua RD., Futian, Shenzhen, China

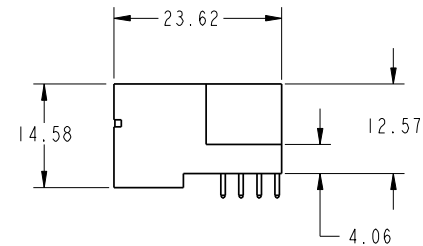
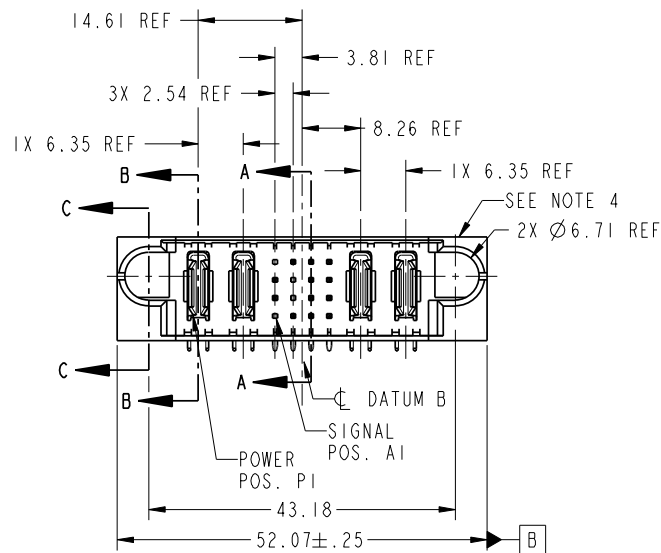


Tous droits strictement réservés. Reproduction ou communication a des tiers interdite sous quelque forme que ce soit sans autorisation écrite du propriétaire. Propriété de c FCI. Droits de reproduction FCI.



All rights strictly reserved. Reproduction or issue to third parties in any form whatever is not permitted without written authority from the proprietor. Property of FCI. Copyright FCI.

PRODUCT NO.	ROWS	POWER		SIGNAL				POWER		E2	
		E1	P1	P2	1	2	3	4	P3		P4
51730-130-- NOTE 3	D C B A										



CODE	DIM "M" MATING LENGTH	CONTACT TYPE
T	[6.86]	SIGNAL
U	[6.86]	SIGNAL
R	[6.86]	SIGNAL
S	[6.86]	SIGNAL
PA	[N/A]	POWER
H	[5.59]	SIGNAL
E	[5.59]	SIGNAL
X	OMITTED	OMITTED

mat'l code				SEE NOTE		tolerances unless otherwise specified		CUSTOMER		FCI	
						0.X ±0.3		COPY		www.fciconnect.com	
ltr	ecn no.	dr	date	linear		0.XX ±0.13		projection		title	
A	DG07-0018	JULIA	01/15/07			0.XXX ±0.051				2P + 16S + 2P	
B	DG07-0192	JULIA	04/05/07	angles		0° ±2°				RIGHT ANGLE SOLDER HEADER	
				dr		JULIA WANG 01/15/07		MM		product family	
				enrg		RYAN YUAN 01/15/07		1:1		PwrBlade	
				chr		BEER FU 01/15/07		scale		code	
				appd		JOSEPH HSIA 01/15/07				213	
sheet index		revision		B B		B B				size	
		1 2		3 4						dwg no	
										51730-130	
										sheet	
										1 of 4	

cage code 22526

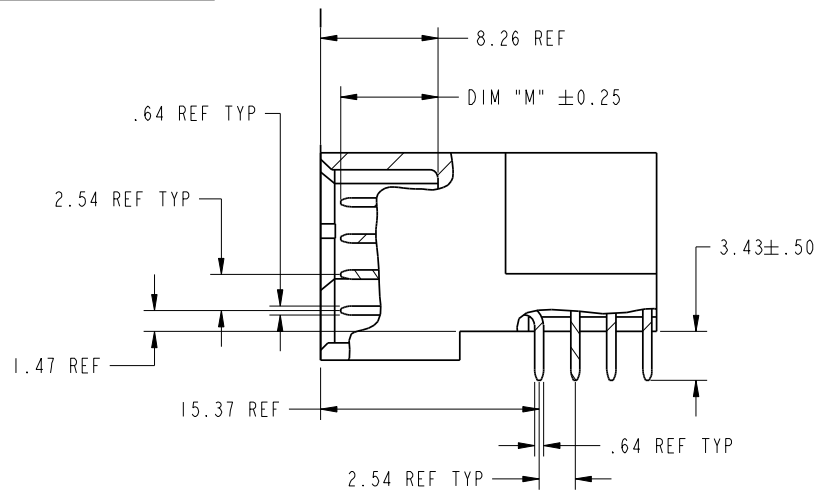
Pro/E

Tous droits strictement reserves. Reproduction ou communication a des tiers interdite sous quelque forme que ce soit sans autorisation écrite du propriétaire. Propriete de c FCI. Droits de reproduction FCI.

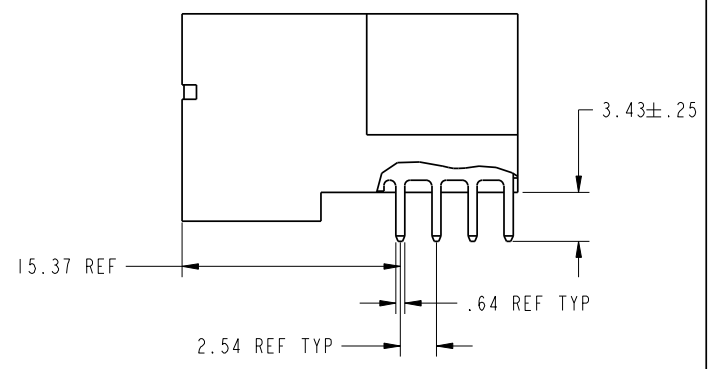


All rights strictly reserved. Reproduction or issue to third parties in any form whatever is not permitted without written authority from the proprietor. Property of FCI. Copyright FCI.

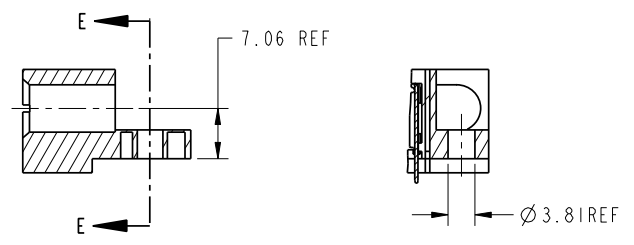
PRODUCT NUMBER
51730-130--
NOTE: 3



BROKEN-OUT SECTION A-A
SCALE 2:1



BROKEN-OUT SECTION B-B
SCALE 2:1



SECTION C-C

PARTIAL SECTION E-E

mat'l code				SEE NOTE	tolerances unless otherwise specified	CUSTOMER	FCI	
lfr	ecm no.	dr	date	linear	0.X ±0.3	COPY	www.fciconnect.com	
B				angles	0.XX ±0.13	projection	title	
				dr	0.XXX ±0.051	MM	2P + 16S + 2P	
				enr	0° ±2°	scale	RIGHT ANGLE SOLDER HEADER	
				chr	JULIA WANG 01/15/07	1:1	product family	PwrBlade
				appd	RYAN YUAN 01/15/07		size	dwg no
					BEER FU 01/15/07		A	51730-130
					JOSEPH HSIA 01/15/07			code
sheet index	revision sheet							213
								sheet
								2 of 4

cage code 22526

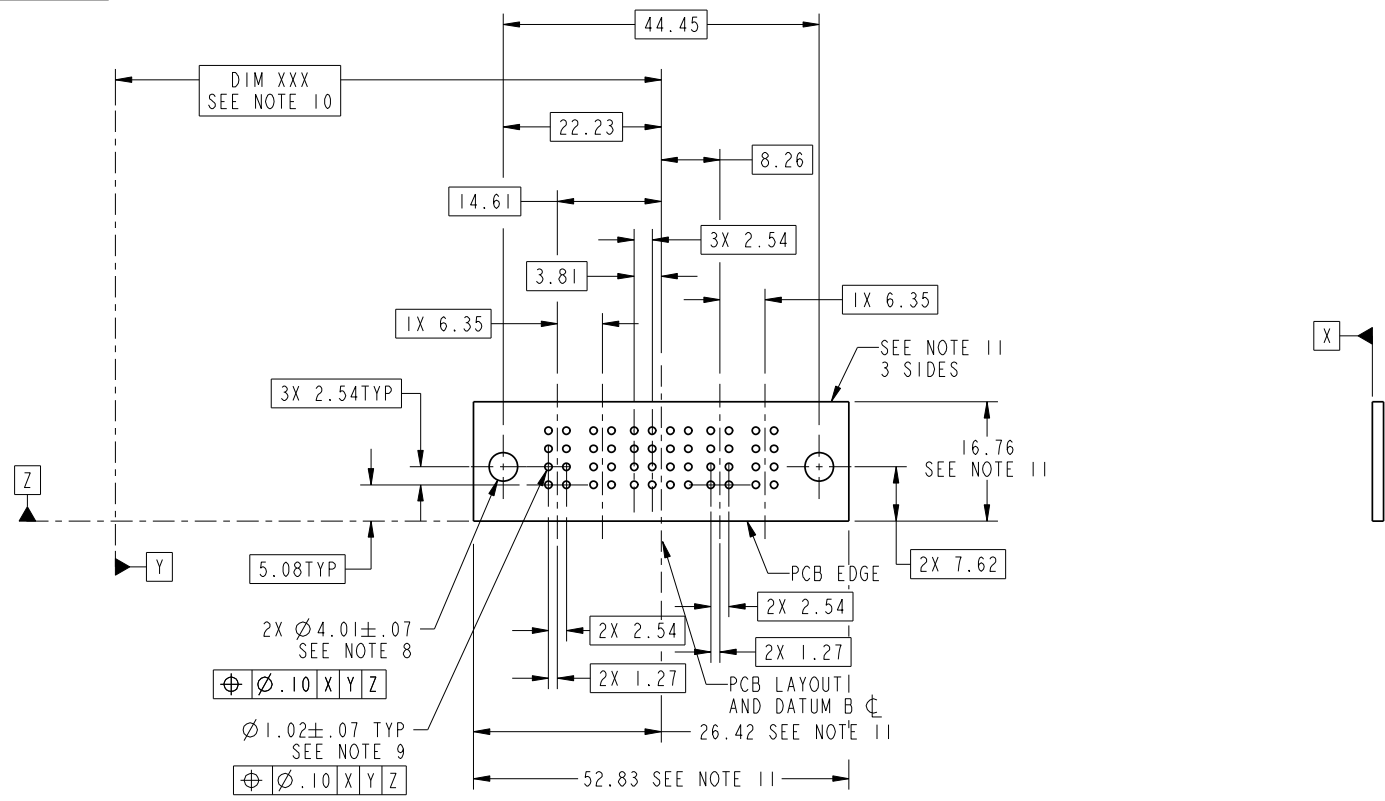
Pro/E

Tous droits strictement reserves. Reproduction ou communication a des tiers interdite sous quelque forme que ce soit sans autorisation écrite du propriétaire. Propriete de c FCI. Droits de reproduction FCI.



All rights strictly reserved. Reproduction or issue to third parties in any form whatever is not permitted without written authority from the proprietor. Property of FCI. Copyright FCI.

PRODUCT NUMBER
51730-130--
NOTE: 3



RECOMMENDED PCB LAYOUT

mat'l code				SEE NOTE	tolerances unless otherwise specified	CUSTOMER	FCI www.fciconnect.com	
lfr	ecn no.	dr	date	linear	0.X ± 0.3	COPY	title	
B				angles	0.XX ± 0.13	projection	2P + 16S + 2P RIGHT ANGLE SOLDER HEADER	
				dr	0.XXX ± 0.051		product family	PwrBlade
				enrg	0° ± 2°	MM	size	213
				chr	JULIA WANG 01/15/07	scale	dwg no	code
				appd	RYAN YUAN 01/15/07	1:1	51730-130	213
					BEER FU 01/15/07		sheet	3 of 4
					JOSEPH HSIA 01/15/07		3 of 4	
sheet index	revision	sheet						

cage code 22526

Pro/E

Tous droits strictement reserves. Reproduction ou communication a des tiers interdite sous quelque forme que ce soit sans autorisation écrite du propriétaire. Propriete de c FCI. Droits de reproduction FCI.



All rights strictly reserved. Reproduction or issue to third parties in any form whatever is not permitted without written authority from the proprietor. Property of FCI. Copyright FCI.

PRODUCT NUMBER
51730-130--
NOTE: 3

NOTES:

1. DIMENSIONS AND TOLERANCES ARE IN ACCORDANCE WITH ASME Y14.5M, 1994 UNLESS OTHERWISE SPECIFIED.

CONNECTOR NOTES:

- 2. HOUSING MATERIAL: UL 94 V-0 GLASS FILLED HIGH-TEMP THERMOPLASTIC
POWER CONTACT MATERIAL: COPPER ALLOY
SIGNAL PIN MATERIAL: COPPER ALLOY
- 3. 51730-130;51730-130LF;51730-130GLF PLATING SPEC. SEE PRINT:10064183
- 4. MANUFACTURER'S NAME, P/N, AND DATE CODE TO APPEAR ON THIS SURFACE.
- 5. PRODUCT SPECIFICATION GS-12-149.
APPLICATION SPECIFICATION BUS-20-067.
- 6. PACKAGED IN TRAYS.

PCB NOTES:

- 7. ALL HOLE DIAMETERS ARE FINISHED HOLE SIZE.
- 8. MOUNTING HOLES, WHERE APPLICABLE, ARE UNPLATED.
- 9. $\varnothing 1.151 \pm 0.025$ DRILLED HOLES PLATED WITH 0.008 MIN SnPb OR Sn OVER 0.03 TO 0.08 Cu PLATING TO ACHIEVE $\varnothing 1.02 \pm .07$ HOLE.
- 10. "DIM XXX" TO BE DETERMINED BY THE CUSTOMER.
- 11. CONNECTOR KEEP-OUT ZONE.

mat'l code				SEE NOTE		tolerances unless otherwise specified		CUSTOMER		FCI		www.fciconnect.com	
lfr	ecr no.	dr	date	linear	0.X ± 0.3	COPY		projection		title			
B					0.XX ± 0.13					2P + 16S + 2P			
				angles	0.XXX ± 0.051					RIGHT ANGLE SOLDER HEADER			
				dr	0° ± 2°			MM		product family		PwrBlade	
				enrg	JULIA WANG 01/15/07			scale		size		213	
				chr	RYAN YUAN 01/15/07			1:1		dwg no		sheet	
				appd	BEER FU 01/15/07					A		4 of 4	
					JOSEPH HSIA 01/15/07					51730-130			
sheet index	revision sheet												

A

A

B

B

1 | 2

3 |

4

1 | 2

Pro/E

3 |

cage code 22526

4