



Chipsmall Limited consists of a professional team with an average of over 10 year of expertise in the distribution of electronic components. Based in Hongkong, we have already established firm and mutual-benefit business relationships with customers from,Europe,America and south Asia,supplying obsolete and hard-to-find components to meet their specific needs.

With the principle of “Quality Parts,Customers Priority,Honest Operation,and Considerate Service”,our business mainly focus on the distribution of electronic components. Line cards we deal with include Microchip,ALPS,ROHM,Xilinx,Pulse,ON,Everlight and Freescale. Main products comprise IC,Modules,Potentiometer,IC Socket,Relay,Connector.Our parts cover such applications as commercial,industrial, and automotives areas.

We are looking forward to setting up business relationship with you and hope to provide you with the best service and solution. Let us make a better world for our industry!



Contact us

Tel: +86-755-8981 8866 Fax: +86-755-8427 6832

Email & Skype: info@chipsmall.com Web: www.chipsmall.com

Address: A1208, Overseas Decoration Building, #122 Zhenhua RD., Futian, Shenzhen, China



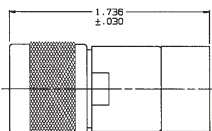
RED INDICATES ORIGINAL

DWG S176	DATA CONTAINED IN THIS DOCUMENT IS UNCLASSIFIED EXCEPT WHERE SHOWN OTHERWISE. IT IS THE PROPERTY OF TROMPETER AND SHALL NOT BE REPRODUCED OR TRANSMITTED IN ANY FORM OR BY ANY MEANS, ELECTRONIC OR MECHANICAL, INCLUDING PHOTOCOPYING, RECORDING, OR BY ANY INFORMATION STORAGE AND RETRIEVAL SYSTEM, WITHOUT EXPRESS WRITTEN PERMISSION.	REV ECD H 12681	REVISIONS DESCRIPTION ADDED: -15, -16 & -17; SH 2 REDRAWN; SEE ECD	105-0376	SH 1C
				DWN DKC	APPROVED LHM
					DATE 7/2/23

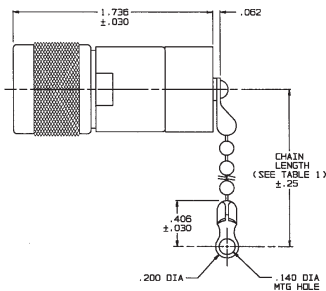
DASH NO	DESCRIPTION	DASH NO	DESCRIPTION
-1	TERM (NO CHAIN)	-10	TERM WITH 10.0 BRASS CHAIN
-2	TERM WITH 2.5 BRASS CHAIN	-11	TERM WITH 10.0 NYLON CHAIN
-3	TERM WITH 2.5 NYLON CHAIN	-12	TERM WITH 2.5 SST ROPE
-4	TERM WITH 3.0 BRASS CHAIN	-13	TERM WITH 3.0 SST ROPE
-5	TERM WITH 3.0 NYLON CHAIN	-14	TERM WITH 6.0 SST ROPE
-6	TERM WITH 6.0 BRASS CHAIN	-15	TERM WITH 4.0 SST ROPE
-7	TERM WITH 6.0 NYLON CHAIN	-16	TERM WITH 7.0 SST ROPE
-8	TERM WITH 4.0 BRASS CHAIN	-17	TERM WITH 4.5 SST ROPE
-9	TERM WITH 4.0 NYLON CHAIN		

DASH NO	"A" DIA	"B" DIA	"C" DIM	"D" DIA
-02	.630	.750	1.066	.450
-03	.505	.625	.941	.369
-04	.439	.562	.878	.355
-05	.380	.500	.816	.325
-06	.317	.437	.753	.295
-07	.281	.408	.722	.278
-08	.510	.750	1.066	.450
-09	.567	.687	1.003	.419
-00B	.330	.450	.796	.300

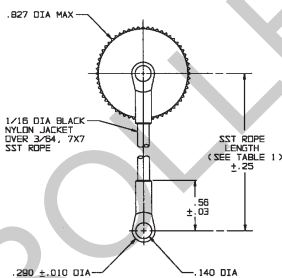
INCH		MM		INCH		MM		INCH		MM	
.005	0.13	.260	7.37	.418	10.64	.625	15.88	.941	23.90		
.010	0.25	.265	7.48	.437	11.10	.630	16.00	.941	25.48		
.030	0.76	.300	7.62	.436	11.15	.687	17.45	1.066	27.08		
.032	0.81	.317	8.05	.450	11.43	.722	18.34	2.5	63.50		
.062	1.57	.325	8.26	.500	12.70	.750	19.05	3.0	76.20		
.140	3.55	.330	8.38	.505	12.83	.753	19.13	4.0	101.60		
.200	5.08	.355	9.02	.56	14.22	.786	19.46	4.5	114.30		
.25	6.35	.380	9.65	.562	14.27	.816	20.73	6.0	152.40		
.278	7.06	.388	9.85	.567	14.40	.827	21.01	7.0	177.80		
.281	7.14	.406	10.31	.610	15.48	.878	22.30	10.0	254.00		



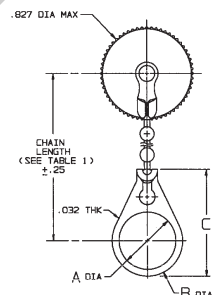
-1 SHOWN
NO CHAIN, STAINLESS STEEL ROPE OR MOUNTING LUG



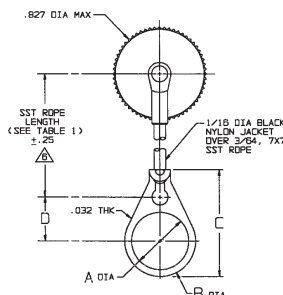
-2-△ THRU -11-△ SHOWN
STANDARD CHAIN & BASIC MOUNTING LUG



-12-△ THRU -17-△ SHOWN
STAINLESS STEEL ROPE AND BASIC MOUNTING LUG



-2-△ -02 THRU -11-△ -00B SHOWN
STANDARD CHAIN AND BULKHEAD JACK MOUNTING LUG



-12-△ -02 THRU -17-△ -00B SHOWN
STAINLESS STEEL ROPE AND BULKHEAD JACK MOUNTING LUG

△ NOTE LENGTH FOR SST ROPE WITH MTG LUG OPTION IS NOT MEASURED TO CENTER OF BULKHEAD MTG LUG

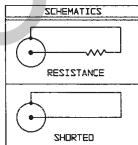
5. EXAMPLE OF COMPLETE MODEL NO:
TNN1-2-△-02
BASIC MODEL NO: TNN1 (50 OHM)
UTNN1 (75 OHM)
CHAIN/ROPE MATL AND LENGTH (SEE TABLE 1)
BULKHEAD JACK MOUNTING LUG (OPTIONAL) WITH BRASS OR NYLON CHAIN AND STAINLESS STEEL ROPE (SEE TABLE 2)

4. TERMINATED MALE COAXIAL 50 & 75 OHM N TYPE PLUG WITH CHAIN & MOUNTING LUG OPTIONS

△ RESISTANCE VALUE IN OHMS (1/2W, 1%) SHOWN SHORTED TO CASE AND RESISTOR

2. FINISH: TFS-1A (NICKEL)

1. ALL DIM ARE IN INCHES



QTY	DESCRIPTION	PART NUMBER	ITEM
10 UNLESS SPECIFIED			
±.005			
±.005			
90°			
90°			
DWN 1 DKC 9-30-88	MATERIAL	14949	DRAWING NO.
ENR 1 G&M 10-6-88			105-0376
ENR 7			REV H
APPR 11-27-72	SCALE 2:1	DATE 11-27-72	SHEET 1C