



Chipsmall Limited consists of a professional team with an average of over 10 year of expertise in the distribution of electronic components. Based in Hongkong, we have already established firm and mutual-benefit business relationships with customers from,Europe,America and south Asia,supplying obsolete and hard-to-find components to meet their specific needs.

With the principle of “Quality Parts,Customers Priority,Honest Operation,and Considerate Service”,our business mainly focus on the distribution of electronic components. Line cards we deal with include Microchip,ALPS,ROHM,Xilinx,Pulse,ON,Everlight and Freescale. Main products comprise IC,Modules,Potentiometer,IC Socket,Relay,Connector.Our parts cover such applications as commercial,industrial, and automotives areas.

We are looking forward to setting up business relationship with you and hope to provide you with the best service and solution. Let us make a better world for our industry!



Contact us

Tel: +86-755-8981 8866 Fax: +86-755-8427 6832

Email & Skype: info@chipsmall.com Web: www.chipsmall.com

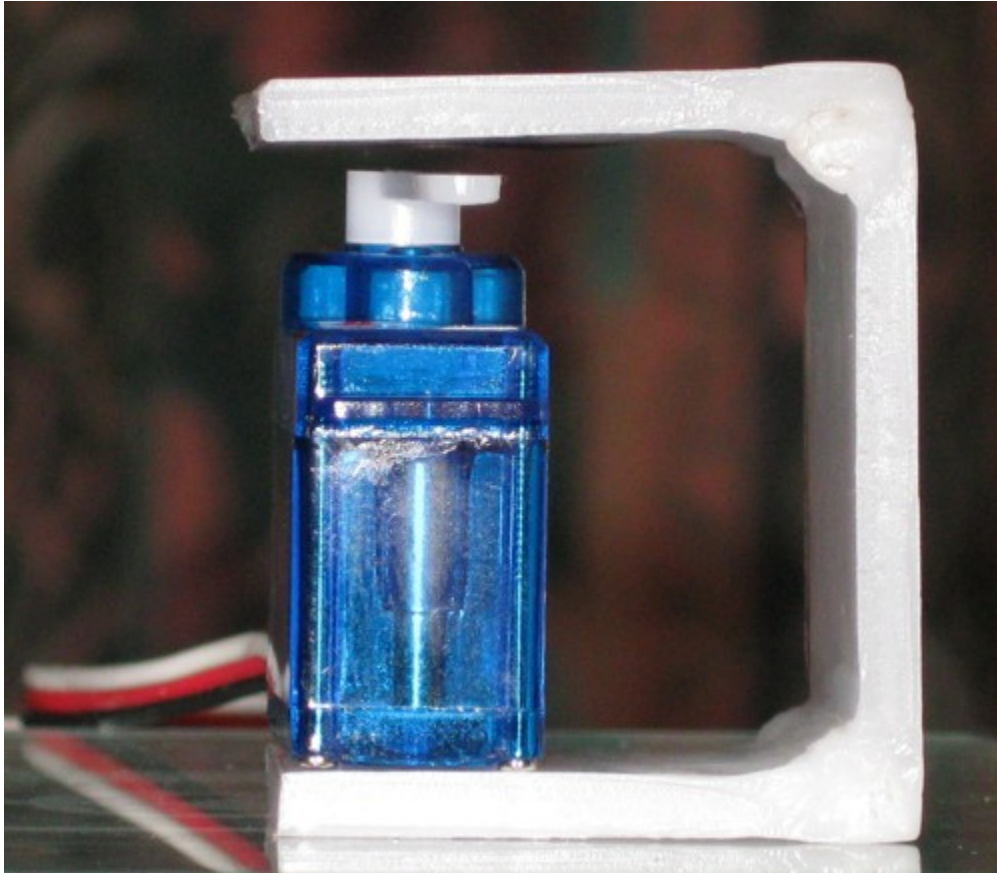
Address: A1208, Overseas Decoration Building, #122 Zhenhua RD., Futian, Shenzhen, China



How To Make

Polymer plastic materials, production of special robot

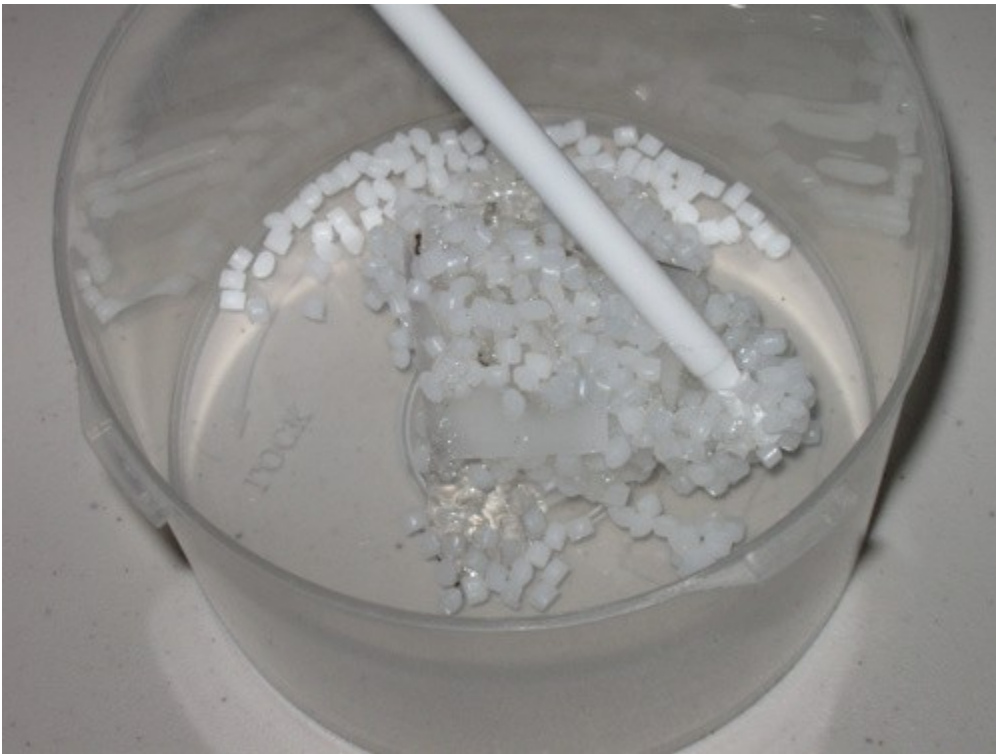
We can look at the complex centipede if the robot is made of how to make:



Should first polymer material placed inside plastic containers, glass containers, plastic containers, steel containers can be, it is best to use cheap plastic containers, so as to avoid washing the remaining good material, while plastic containers like discarded if so, nor the loss What:



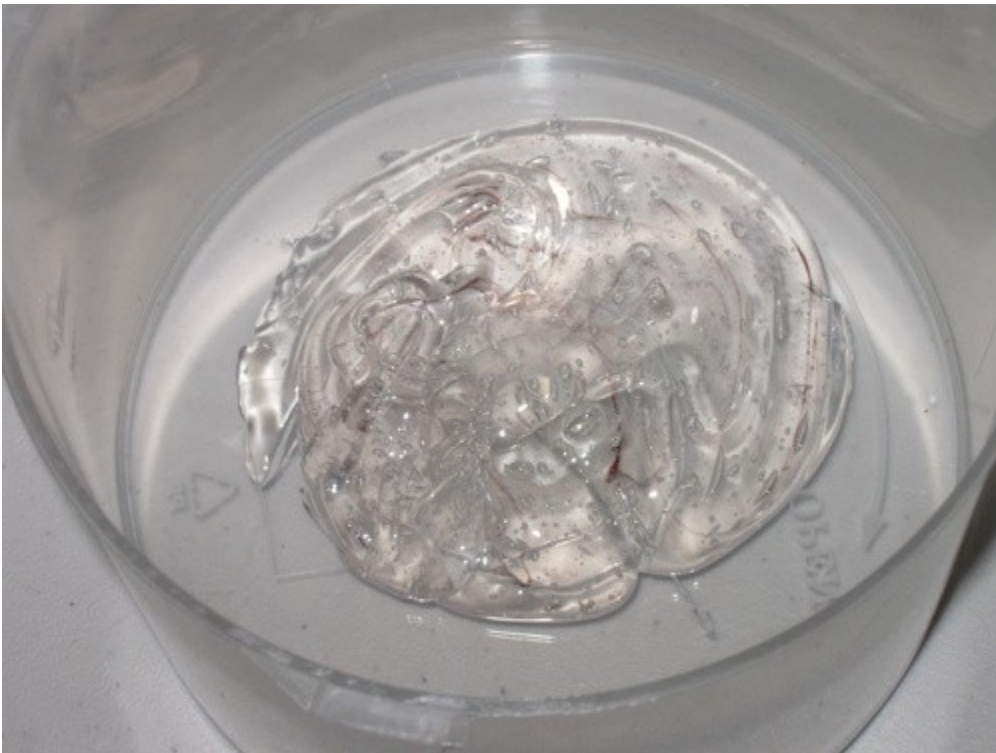
65~90° Add 65 ~ 90 ° C hot water mixing



Granular polymer materials can be seen slowly melt into a liquid



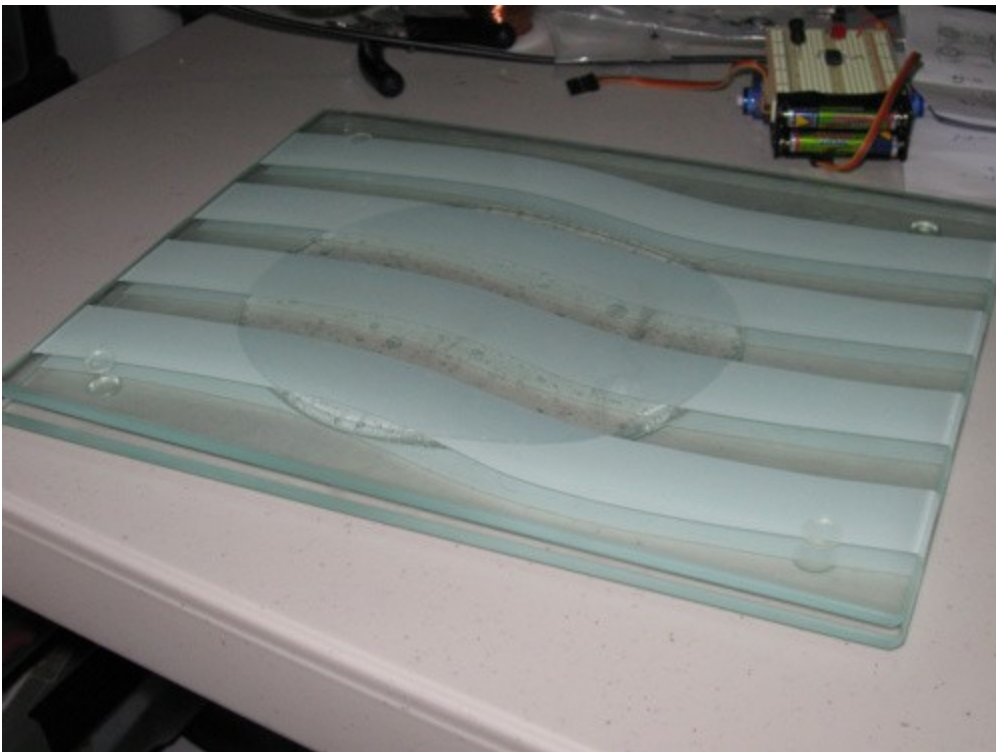
Do not add too much water, stir well to become the state diagram, they can be the next step



Preferred glass can be used to forming / shaping

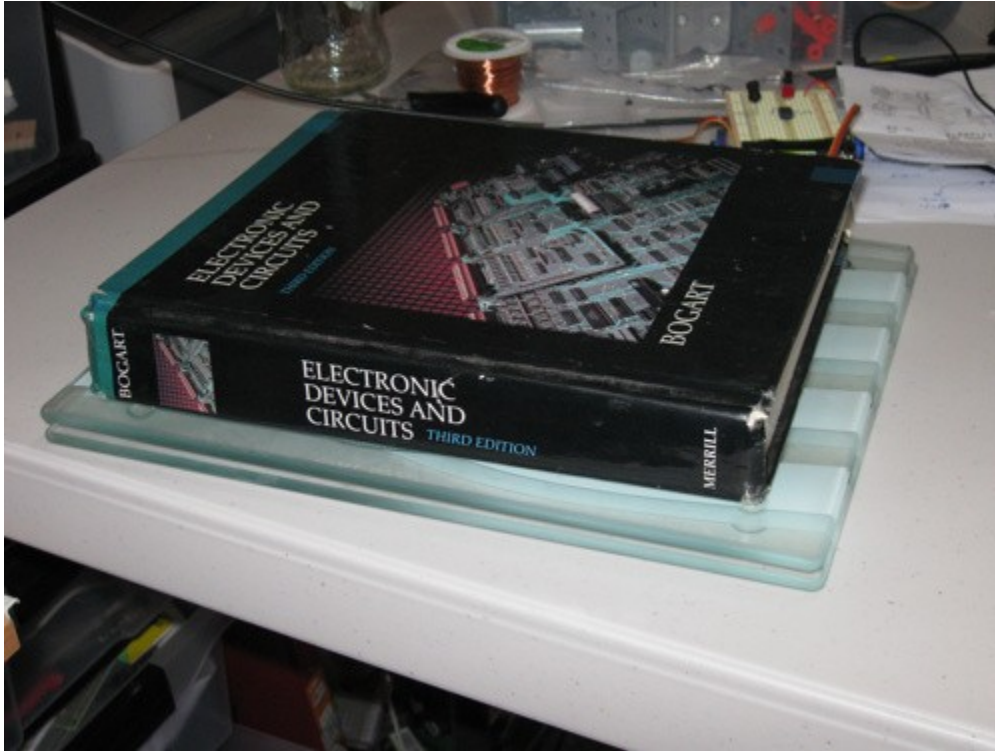


The melt to a liquid-like polymer materials, fell on the glass plate, as shown:



In the polymer material pressure on another piece of glass, and confirmed that two glass panels are parallel,

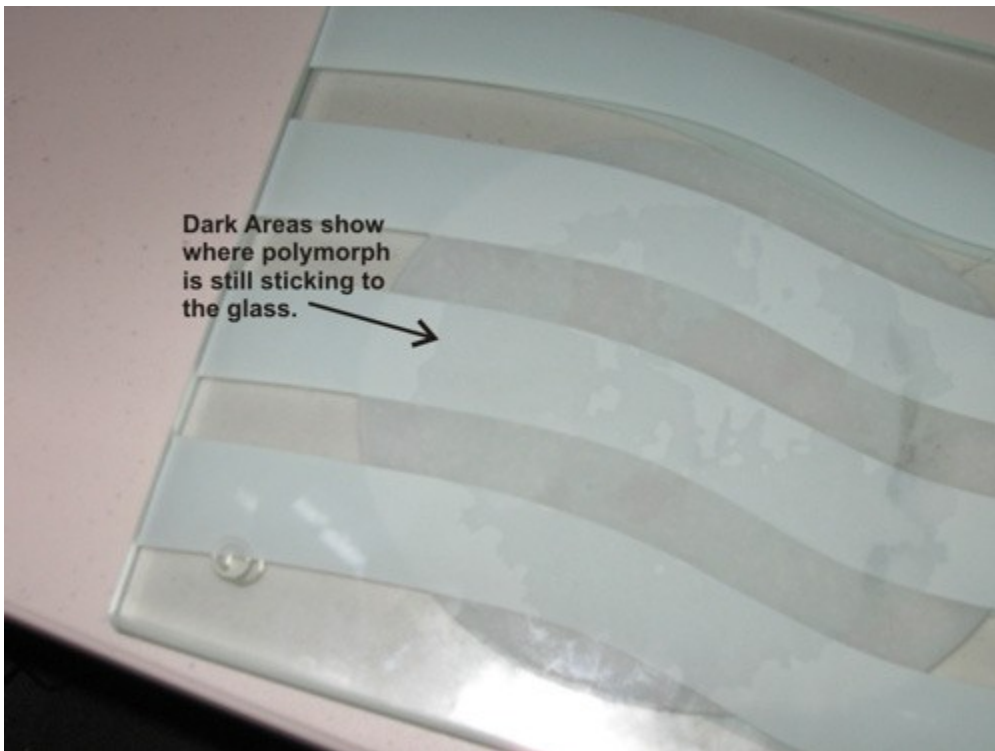
And unformed the thickness of the polymer material thickness you want, when sent for heavy pressure on it, the more secure a few:



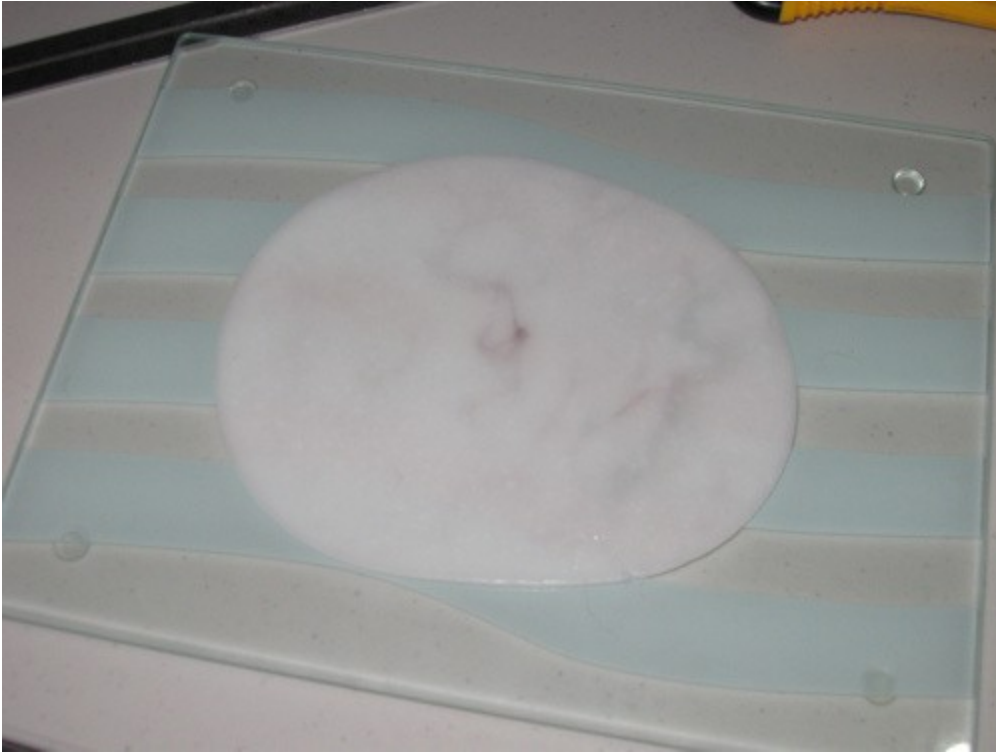
2 ~ 3 hours later, remove the top of the weight (just take the box below), can be observed forming polymer materials are:



Can be seen in the shape of polymer materials have been:



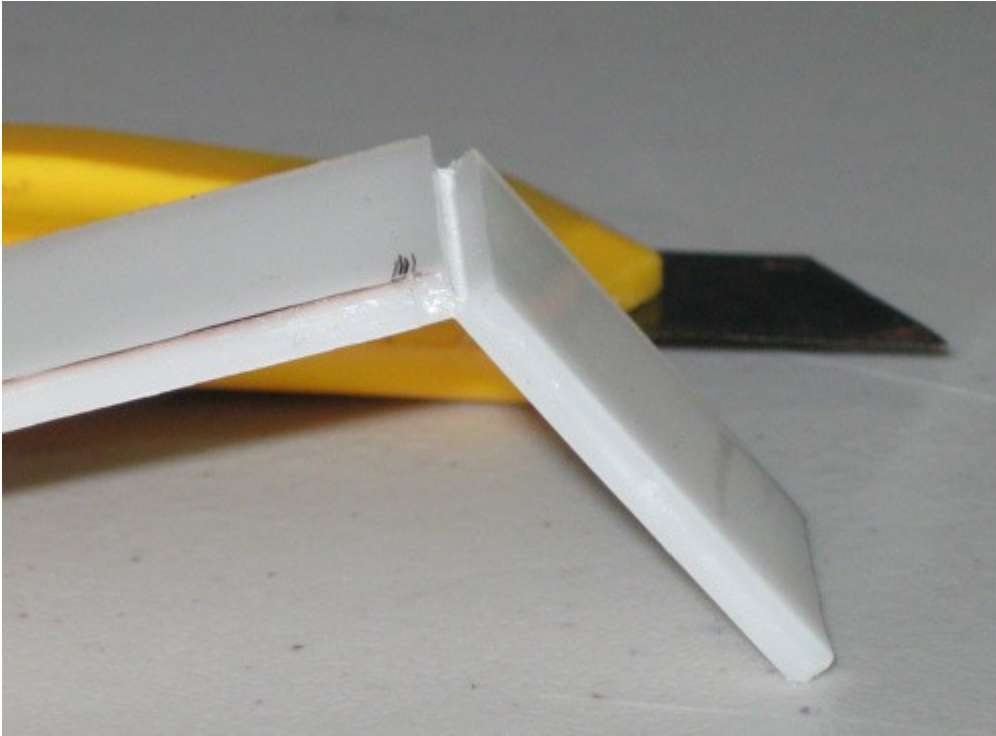
6 ~ 12 hours later, you can see the real forming polymer materials have been:



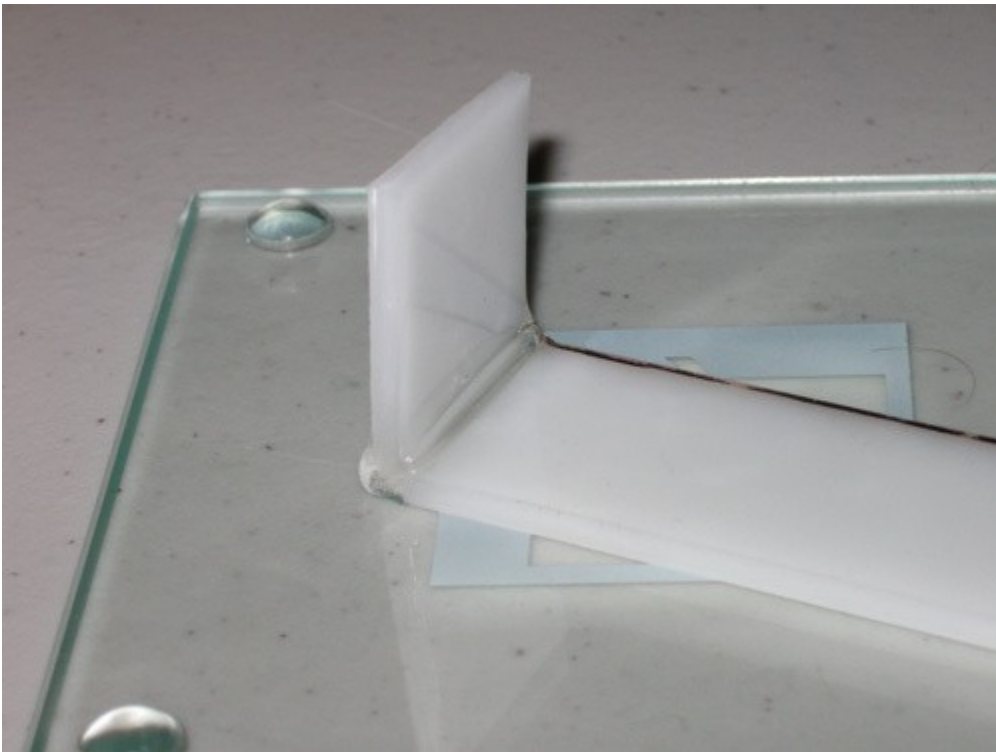
At this time can be recruited Jiedao cut into the profile you want to



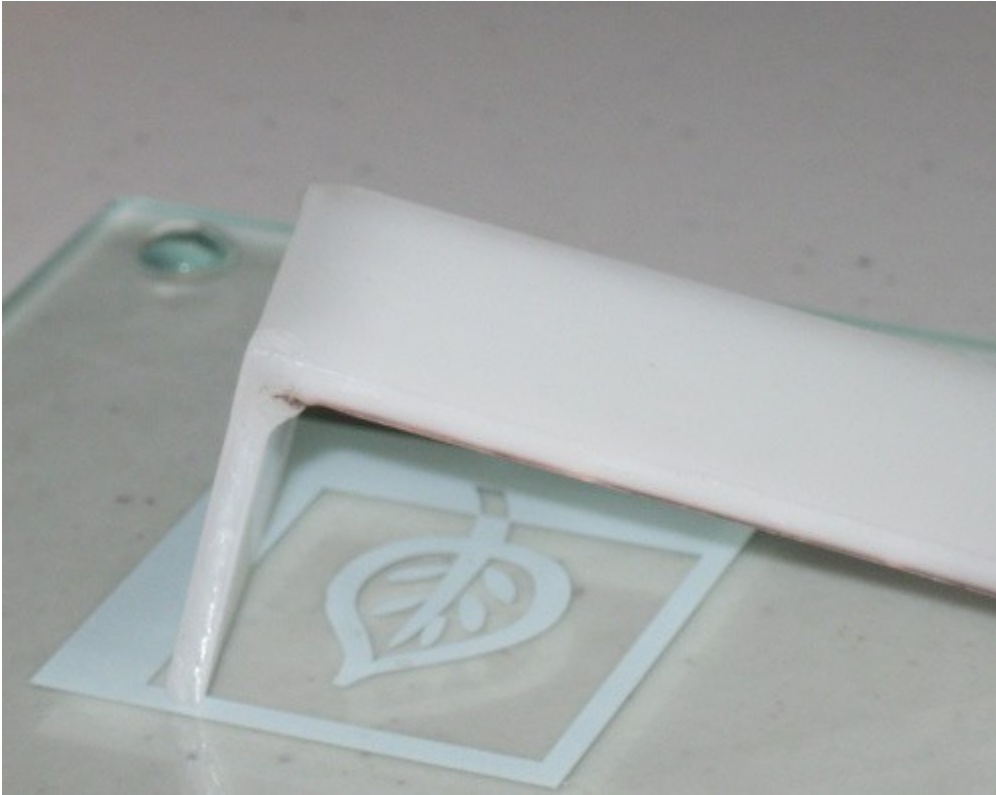
Fold for the shape you want



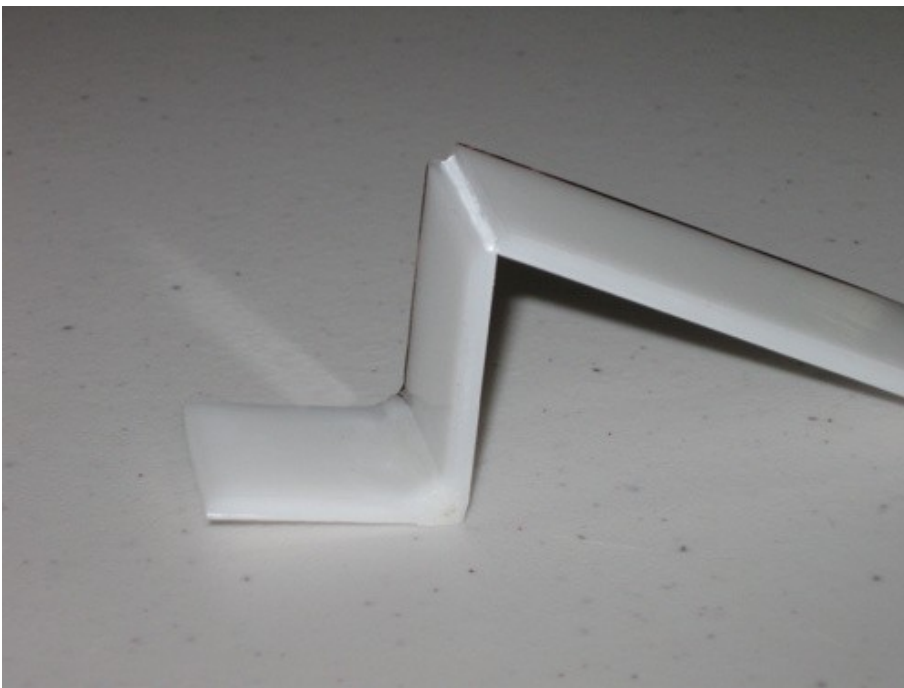
Re-feeding



Wait Forming



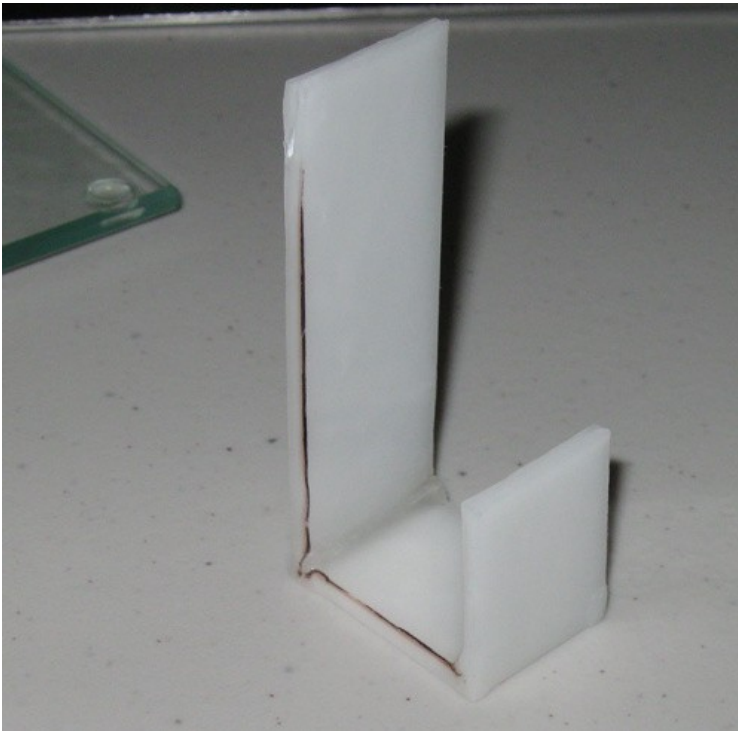
Bending again



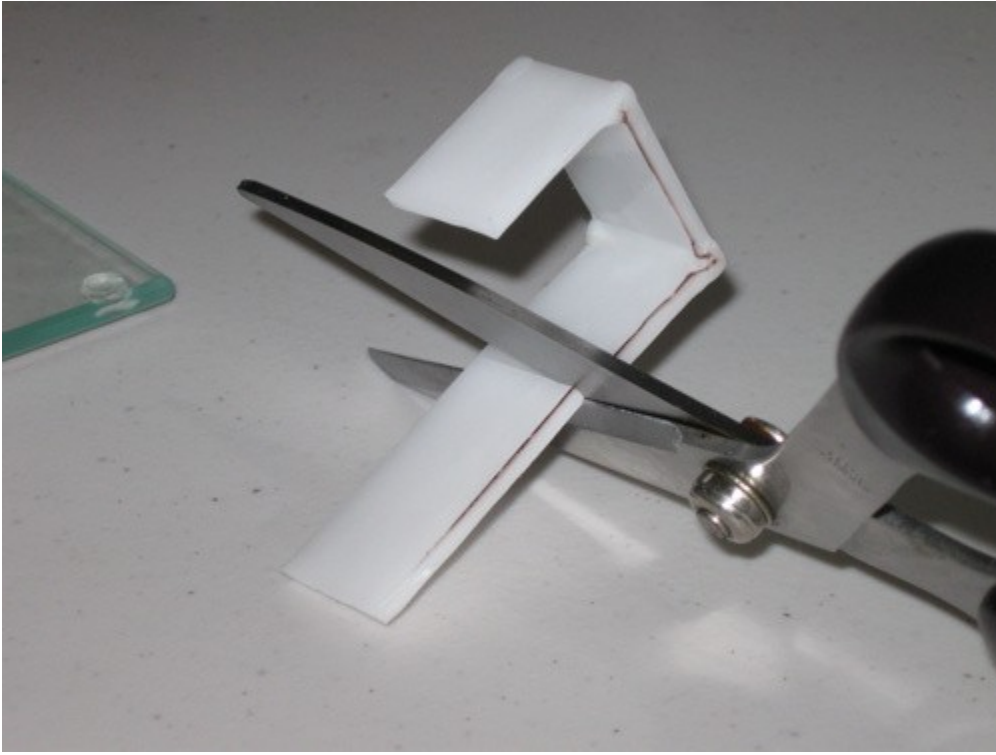
Re-feeding

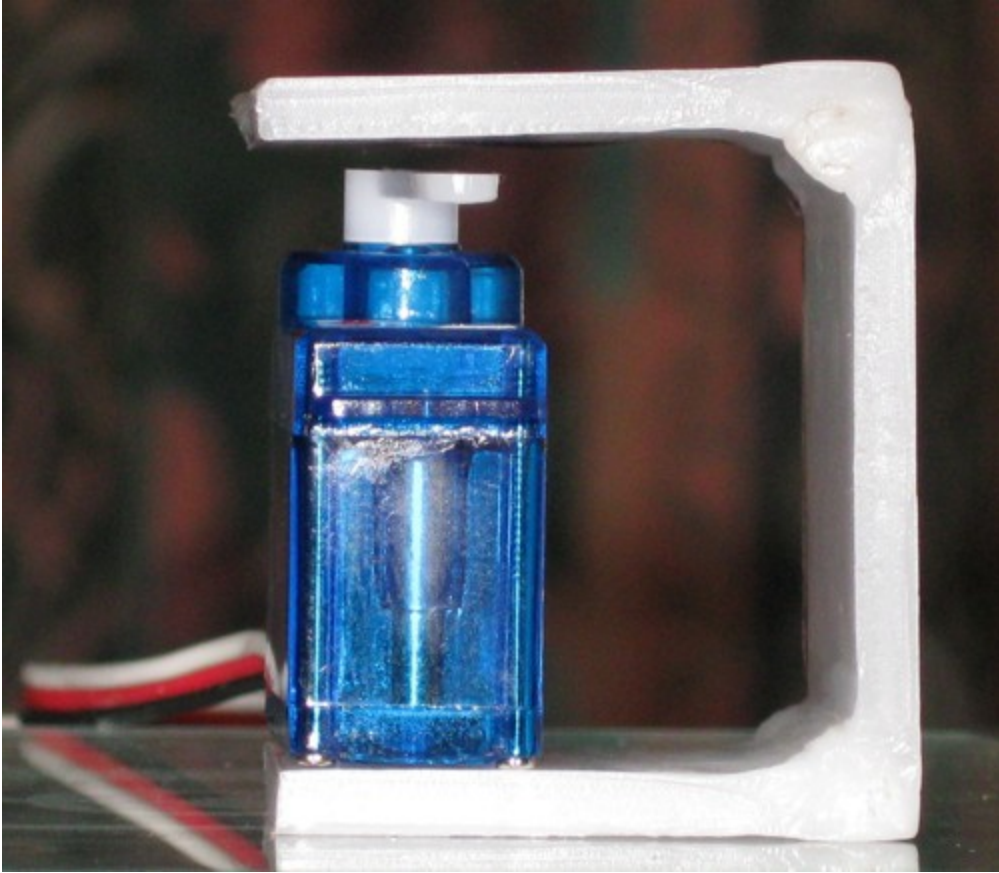


Shown



Long enough, you can cut the

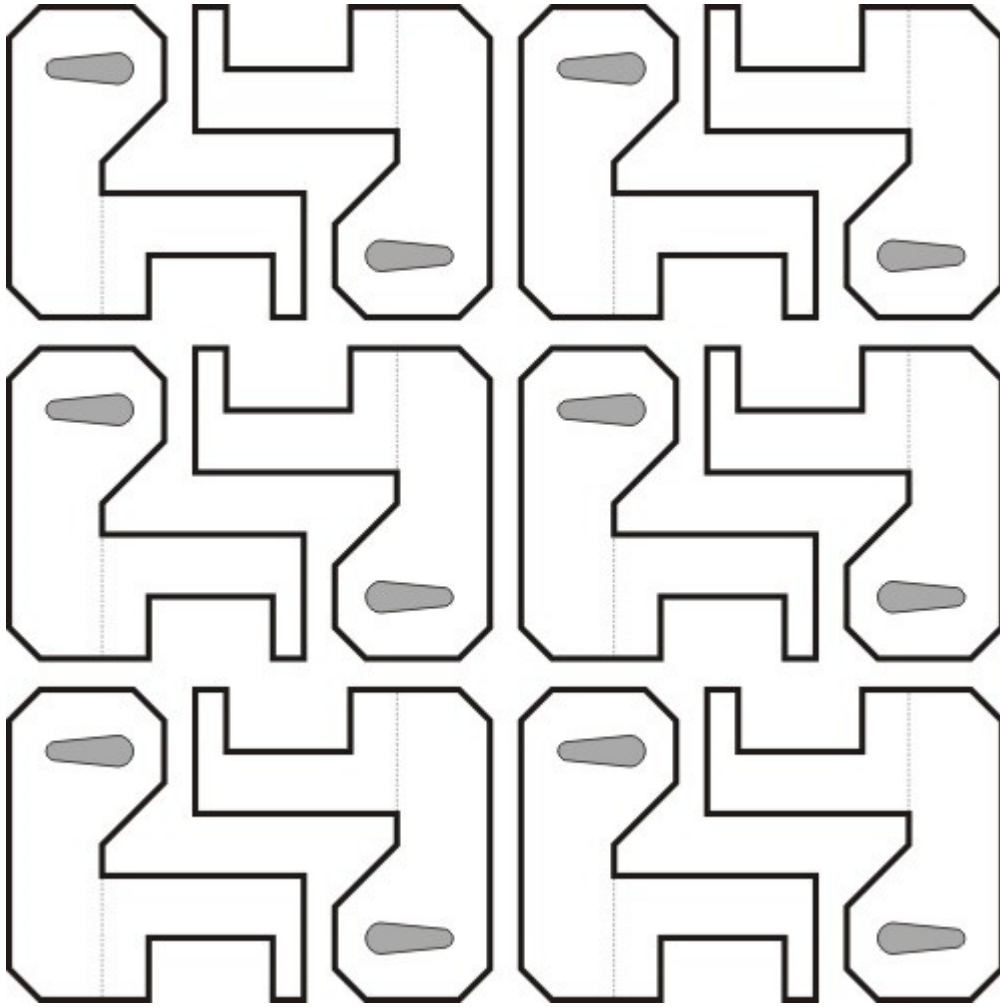




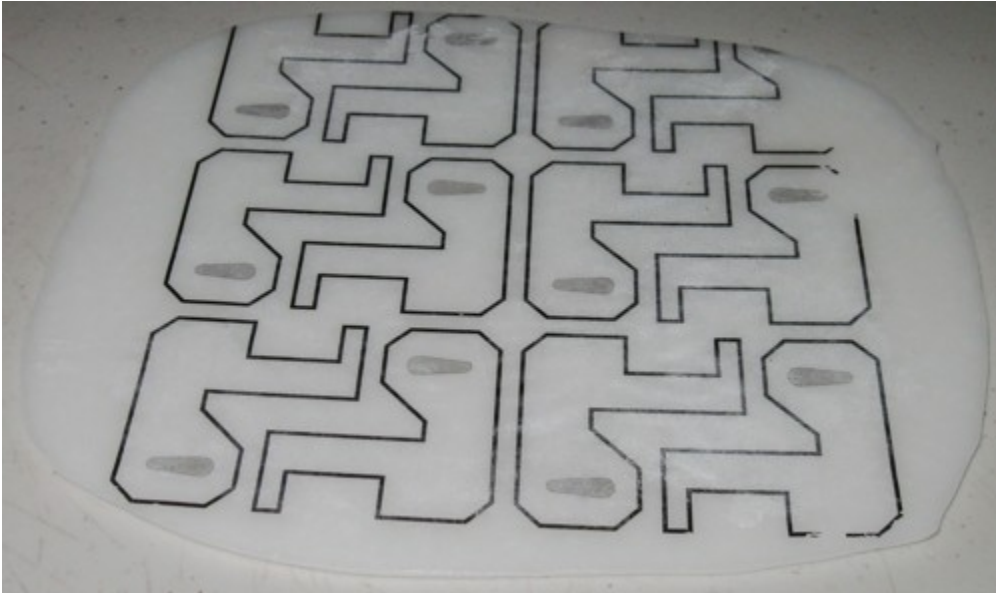
Did not survey the place, you can use iron to amend or beautification



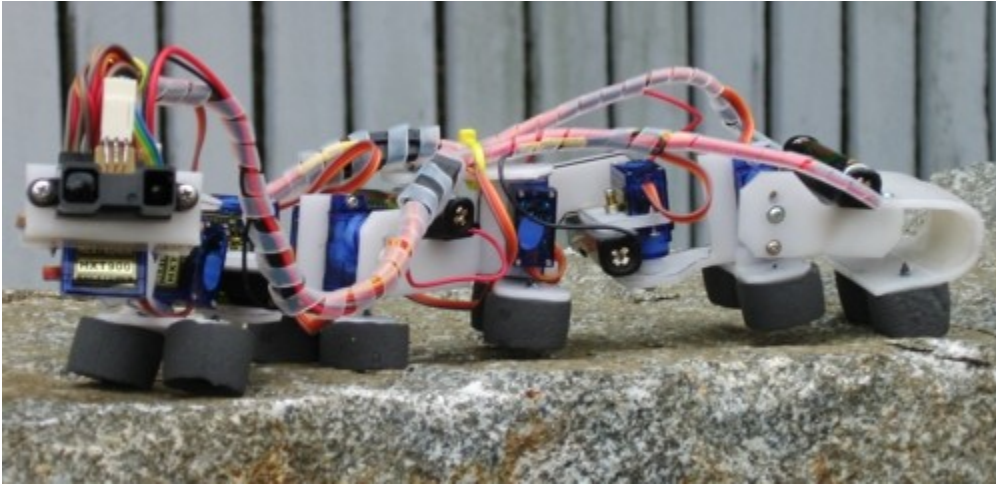
Chunks of like other forms, the first stroke with the whiteboard diagram



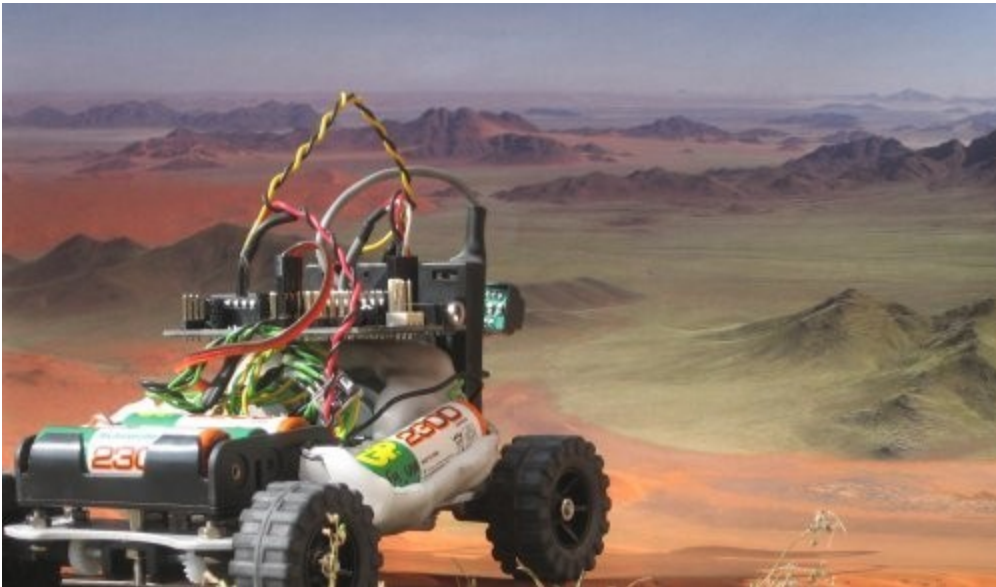
Paint finish



Final product displayed: Otani centipede robot



Obstacle-based vehicles into robots

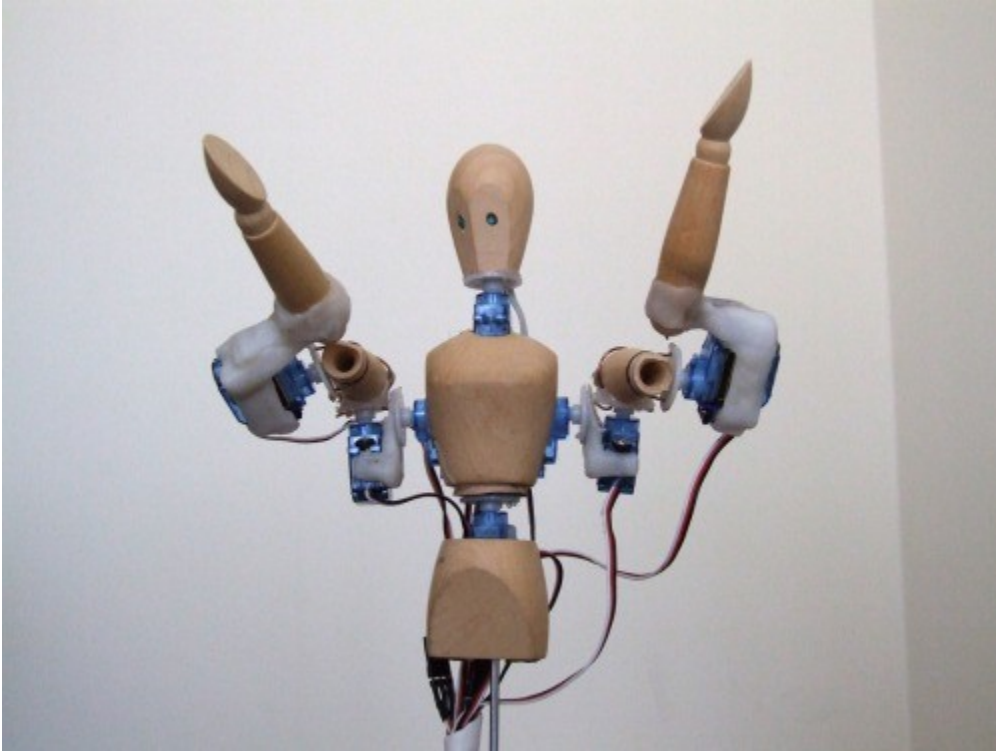


Mouse



www.letsmakerobots.com (Gareth)

Robots



Robot Fish

