



Chipsmall Limited consists of a professional team with an average of over 10 year of expertise in the distribution of electronic components. Based in Hongkong, we have already established firm and mutual-benefit business relationships with customers from,Europe,America and south Asia,supplying obsolete and hard-to-find components to meet their specific needs.

With the principle of "Quality Parts,Customers Priority,Honest Operation,and Considerate Service",our business mainly focus on the distribution of electronic components. Line cards we deal with include Microchip,ALPS,ROHM,Xilinx,Pulse,ON,Everlight and Freescale. Main products comprise IC,Modules,Potentiometer,IC Socket,Relay,Connector.Our parts cover such applications as commercial,industrial, and automotives areas.

We are looking forward to setting up business relationship with you and hope to provide you with the best service and solution. Let us make a better world for our industry!



Contact us

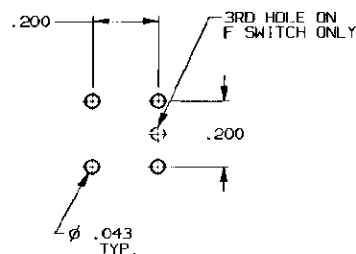
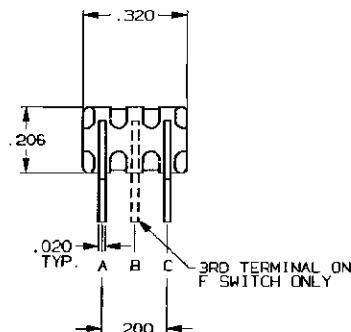
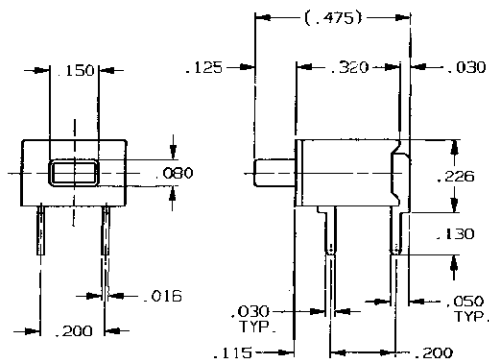
Tel: +86-755-8981 8866 Fax: +86-755-8427 6832

Email & Skype: info@chipsmall.com Web: www.chipsmall.com

Address: A1208, Overseas Decoration Building, #122 Zhenhua RD., Futian, Shenzhen, China



CONVERSION CHART	
INCH	MM
.002	0.05
.010	0.25
.016	0.41
.020	0.51
.030	0.76
.043	1.09
.050	1.27
.080	2.03
.115	2.92
.125	3.18
.150	3.81
.200	5.08
.206	5.23
.226	5.74
.320	8.13
.475	12.07



RECOMMENDED HOLE LAYOUT

TOLERANCE $\pm .002$ UNLESS OTHERWISE NOTED

SPECIFICATIONS:

MATERIALS:
CASE: HIGH TEMPERATURE POLYESTER, UL 94V-0.
ACTUATOR BUTTON: THERMOPLASTIC, COLORS: SEE CHART BELOW.
MOVING CONTACT: COPPER ALLOY, GOLD PLATED OVER NICKEL.
FIXED CONTACT: COPPER ALLOY, GOLD PLATED OVER NICKEL.
TERMINALS: COPPER ALLOY, TIN LEAD PLATED.
TERMINAL SEAL: SP EPOXY
DP EPOXY OPTIONAL.

ELECTRICAL:
CONTACT RATING: GOLD = 0.4 VA MAX. @ 20 VDC OR PEAK AC.
INITIAL CONTACT RESISTANCE: 20 MILLIOHMS MAX.
INSULATION RESISTANCE: 1,000 MEGOHMS @ 500 VDC MIN.
DIELECTRIC STRENGTH: 1,000 VAC @ SEA LEVEL.
LIFE EXPECTANCY: GOLD: 1 POLE = 100,000 CYCLES
2 POLES = 80,000 CYCLES.

MECHANICAL:
ACTUATION FORCE: TP11CG-RA: 9 oz. (.26 Kg)
TP11FG-RA: 12 oz. (.34 Kg).
ACTUATION TRAVEL: .030 APPROX.

ENVIRONMENTAL:
OPERATING TEMPERATURE: -22°F TO +149°F (-30°C TO +65°C).
STORAGE TEMPERATURE: -22°F TO +149°F (-30°C TO +65°C).

NOTES:

1. INTERPRET DRAWING PER ASME Y14.5M-1994.
2. FORMERLY TPB11CG-RA.

(*)	COLOR
0	BLACK
2	RED
6	BLUE

CONTACTS			
MODEL NUMBER	ACTION	FREE BUTTON	DEPRESSED BUTTON
TP11CG-RA(*)	SPST NORMALLY OPEN	NONE	A TO C
TP11FG-RA(*)	SPDT MOMENTARY	B TO A	B TO C (MOM)



OUTLINE DRAWING SPECIFICATIONS ARE SUBJECT TO CHANGES WITHOUT NOTICE

TOLERANCES (EXCEPT AS NOTED)
ANGULAR - $\pm 1^\circ$
DECIMAL .XX = $\pm .010$
DECIMAL .XXX = $\pm .010$
DECIMAL .XXXX = $\pm .010$

ANGAT CONFIDENTIAL
This document contains information which is the exclusive property of Angat Inc.
Distribution, reproduction or use by others is not permitted without the expressed written consent of Angat Inc.

UNLESS OTHERWISE SPECIFIED DIMENSIONS ARE IN INCHES
DO NOT SCALE PRINT

FILE NAME: 401310UT DIRECTORY: T1NEX01

MATERIAL: SEE SPECIFICATIONS

DATE: 7-9-77

SEE SPECIFICATIONS

ORIGINAL DATE OF DRAWING: 7-3-77

DRAWN: B. BUCKHEIT DATE: 7-9-77

CHECKED: T. D. KIRCHOFF DATE: 7-9-77

APPROVED: F. D. KIRCHOFF DATE: 7-9-77

CODE IDENT. NO. 91506

DMG. SIZE C

NEXT ASSY:

TYCO ELECTRONIC

TITLE: OUTLINE DRAWING
PUSHBUTTON SWITCH
TP11CG/FG-RA(*)

DMG. NO. **1437571-8**

PRODUCT CODE: BSL
SCALE: SHEET 1 OF 1

REV A
REV B
REV C
REV D

PER OG3C-0173-02
APD-MZ 03OCT02