



Chipsmall Limited consists of a professional team with an average of over 10 year of expertise in the distribution of electronic components. Based in Hongkong, we have already established firm and mutual-benefit business relationships with customers from,Europe,America and south Asia,supplying obsolete and hard-to-find components to meet their specific needs.

With the principle of “Quality Parts,Customers Priority,Honest Operation,and Considerate Service”,our business mainly focus on the distribution of electronic components. Line cards we deal with include Microchip,ALPS,ROHM,Xilinx,Pulse,ON,Everlight and Freescale. Main products comprise IC,Modules,Potentiometer,IC Socket,Relay,Connector.Our parts cover such applications as commercial,industrial, and automotives areas.

We are looking forward to setting up business relationship with you and hope to provide you with the best service and solution. Let us make a better world for our industry!



## Contact us

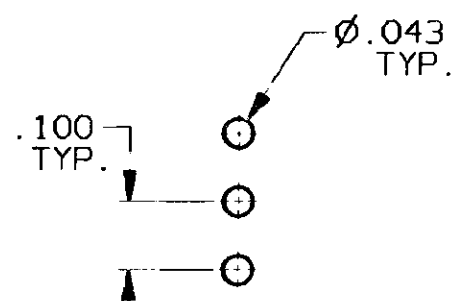
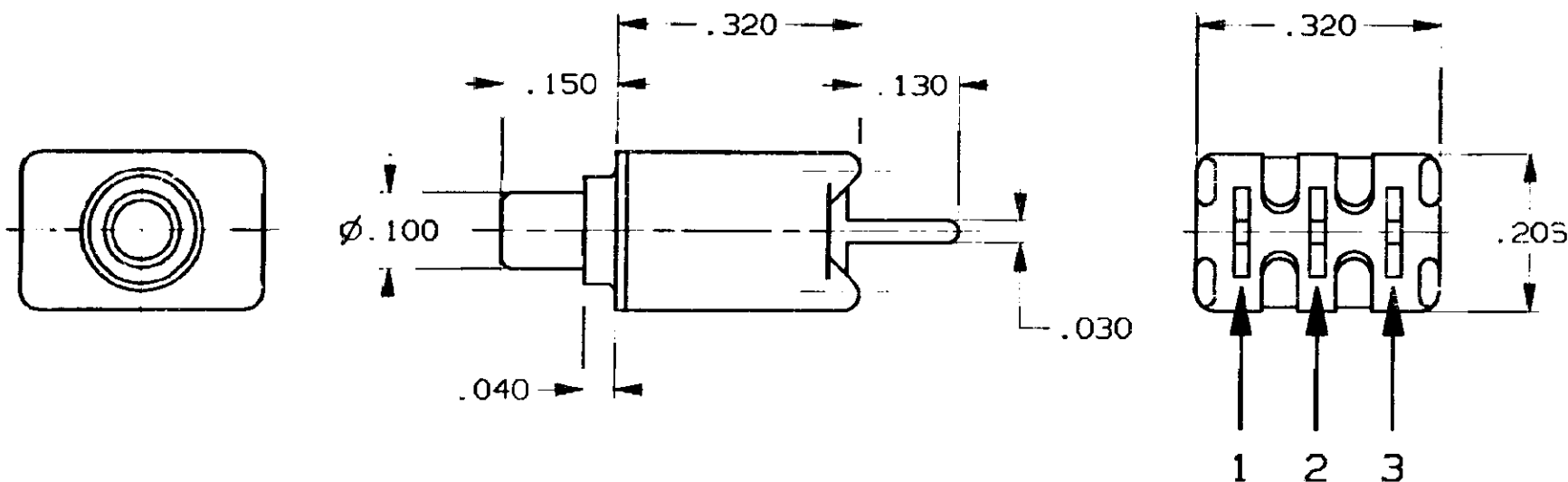
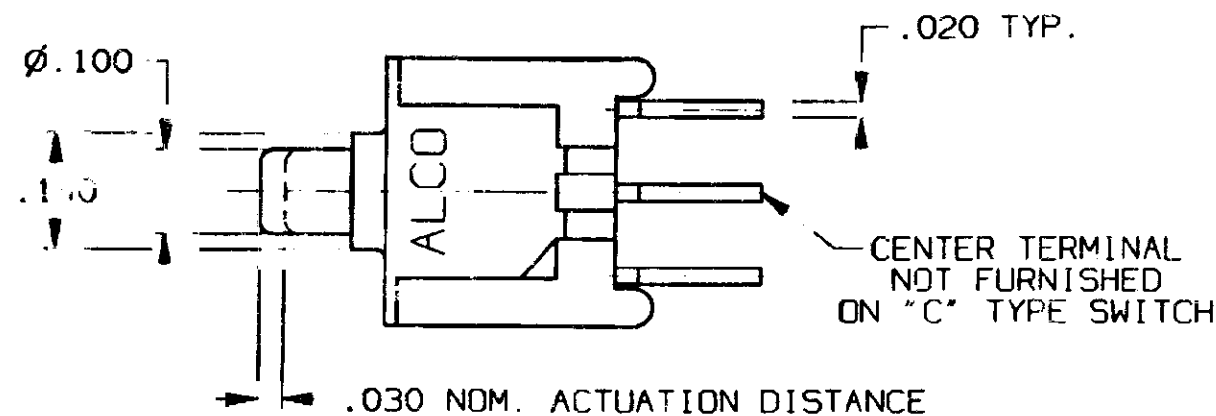
Tel: +86-755-8981 8866 Fax: +86-755-8427 6832

Email & Skype: [info@chipsmall.com](mailto:info@chipsmall.com) Web: [www.chipsmall.com](http://www.chipsmall.com)

Address: A1208, Overseas Decoration Building, #122 Zhenhua RD., Futian, Shenzhen, China



CONVERSION CHART	
INCH	MM
.002	0.05
.010	0.25
.020	0.50
.030	0.76
.040	1.01
.043	1.09
.100	2.54
.110	2.79
.130	3.30
.140	3.55
.150	3.81
.206	5.23
.320	8.12



**RECOMMENDED HOLE LAYOUT**  
TOLERANCE  $\pm .002$  UNLESS OTHERWISE NOTED

OPTIONS	
[**]	BUTTON COLOR
[0]	BLACK
[2]	RED
[9]	WHITE

#### SPECIFICATIONS:

**MATERIALS:**  
CASE: HIGH TEMPERATURE POLYESTER, UL94V-0.  
ACTUATOR BUTTON: POLYAMIDE, (SEE OPTIONS CHART).  
TERMINALS: COPPER ALLOY, TIN/LEAD PLATE.  
TERMINAL SEAL: SP EPOXY.  
MOVING CONTACT: COPPER ALLOY, GOLD PLATE.  
FIXED CONTACTS: COPPER ALLOY, GOLD PLATE.

**ELECTRICAL:**  
CONTACT RATING, GOLD: 0.4 VA MAX. @ 20VDC OR PEAK AC.  
INITIAL CONTACT RESISTANCE: 20 MILLIOHMS MAX.  
INSULATION RESISTANCE: 1,000 MEGOHMS @ 500 VDC MIN.  
DIELECTRIC STRENGTH: 1000 VOLTS RMS @ SEA LEVEL.  
LIFE EXPECTANCY: 60,000 CYCLES.

**MECHANICAL:**  
ACTUATION FORCE: 50 TO 400 GRAMS.  
ACTUATION TRAVEL: .030 IN. APPROX.

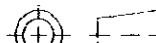


**ENVIRONMENTAL:**  
OPERATING TEMPERATURE:  $-22^{\circ}\text{F}$  TO  $+149^{\circ}\text{F}$  ( $-30^{\circ}\text{C}$  TO  $+65^{\circ}\text{C}$ ).  
STORAGE TEMPERATURE:  $-22^{\circ}\text{F}$  TO  $+149^{\circ}\text{F}$  ( $-30^{\circ}\text{C}$  TO  $+65^{\circ}\text{C}$ ).

**NOTES:** UNLESS OTHERWISE SPECIFIED  
1. INTERPRET DRAWING PER ANSI Y14.5M 1982.

CIRCUIT CONNECTIONS		
SWITCH (*) MODEL NO	FLAT ALCO 1 2 3	FLAT ALCO 1 2 3
TPA11(C)G-PC	OFF	3-1 (MOM)
TPA11(F)G-PC	2-1	2-3 (MOM)
<b>NOTES:</b> TERMINALS CONNECTED WHEN BUTTON IS IN POSITIONS SHOWN. TERMINAL DESIGNATION NUMBERS ARE FOR REFERENCE ONLY, AND DO NOT APPEAR ON SWITCHES.		

#### CUSTOMER DRAWING

SPECIFICATIONS ARE SUBJECT TO CHANGES WITHOUT NOTICE

	THIRD ANGLE PROJECTION	UNLESS OTHERWISE SPECIFIED DIMENSIONS ARE IN MILLI- METERS. DO NOT SCALE PRINT		ORIGINAL DATE OF DRAWING: 9-23-96		 	
	TOLERANCES (EXCEPT AS NOTED)			DRAWN: C. THEODORE	DATE: 9-23-96	TITLE: CUSTOMER DRAWING	
	ANGULAR = $\pm 1^{\circ}$			CHECKED:	DATE:	PUSHBUTTON SWITCH.	
	DECIMAL .XXX = $\pm .010$	MATERIAL:  SEE SPECIFICATIONS		APPROVED:	DATE:	(TPA11(*)G-PC[**])	
	<b>TYCO CONFIDENTIAL</b> This document contains information which is the exclusive property of <b>TYCO ELECTRONICS</b> Distribution, reproduction or use by others is not permitted without the expressed written consent of Augat Inc.	FINISH:  SEE SPECIFICATIONS		CODE IDENT. NO.  91508	DWG. SIZE  C	DWG. NO.  2-1437571-5	REV.  A
			NEXT ASSY:	PRODUCT CODE:		SCALE:	
					SHEET 1 OF 1		

AUGAT D/N 40102

THIS IS A C.A.D. GENERATED DRAWING. DO NOT MAKE MANUAL REVISIONS TO MASTER.

**tyco**  
**Electronics**

TITLE: CUSTOMER DRAWING  
PUSHBUTTON SWITCH.  
(TPA11(\*)G-PC[\*\*])

DWG NO. 2-1437571-5  
REV. A

REV	A
REVISIONS	063C-0173-02