



Chipsmall Limited consists of a professional team with an average of over 10 year of expertise in the distribution of electronic components. Based in Hongkong, we have already established firm and mutual-benefit business relationships with customers from,Europe,America and south Asia,supplying obsolete and hard-to-find components to meet their specific needs.

With the principle of “Quality Parts,Customers Priority,Honest Operation,and Considerate Service”,our business mainly focus on the distribution of electronic components. Line cards we deal with include Microchip,ALPS,ROHM,Xilinx,Pulse,ON,Everlight and Freescale. Main products comprise IC,Modules,Potentiometer,IC Socket,Relay,Connector.Our parts cover such applications as commercial,industrial, and automotives areas.

We are looking forward to setting up business relationship with you and hope to provide you with the best service and solution. Let us make a better world for our industry!



## Contact us

Tel: +86-755-8981 8866 Fax: +86-755-8427 6832

Email & Skype: [info@chipsmall.com](mailto:info@chipsmall.com) Web: [www.chipsmall.com](http://www.chipsmall.com)

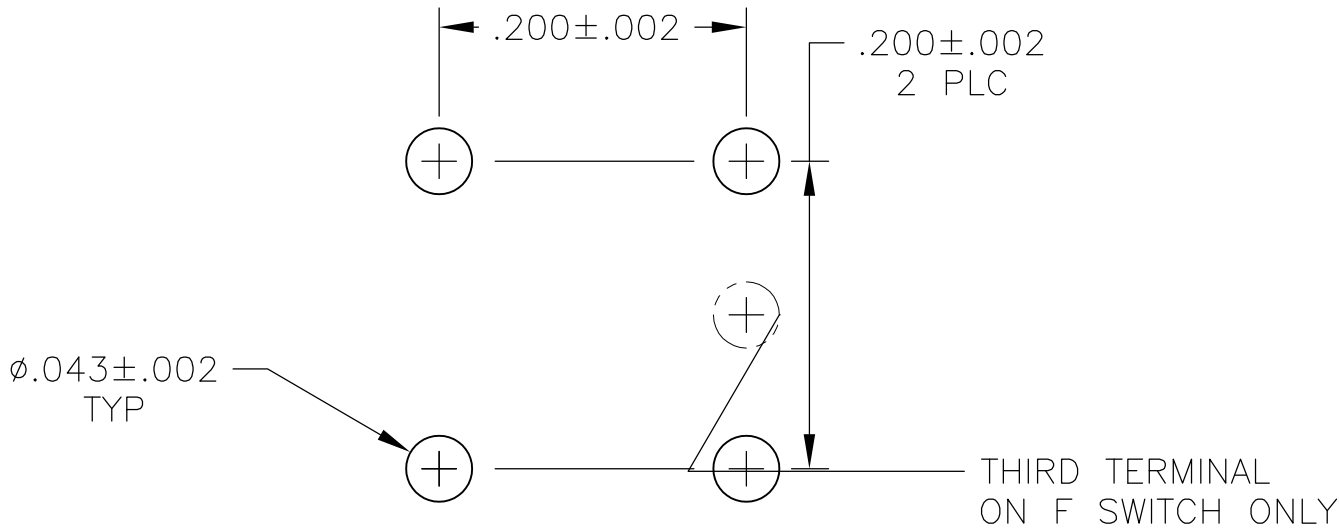
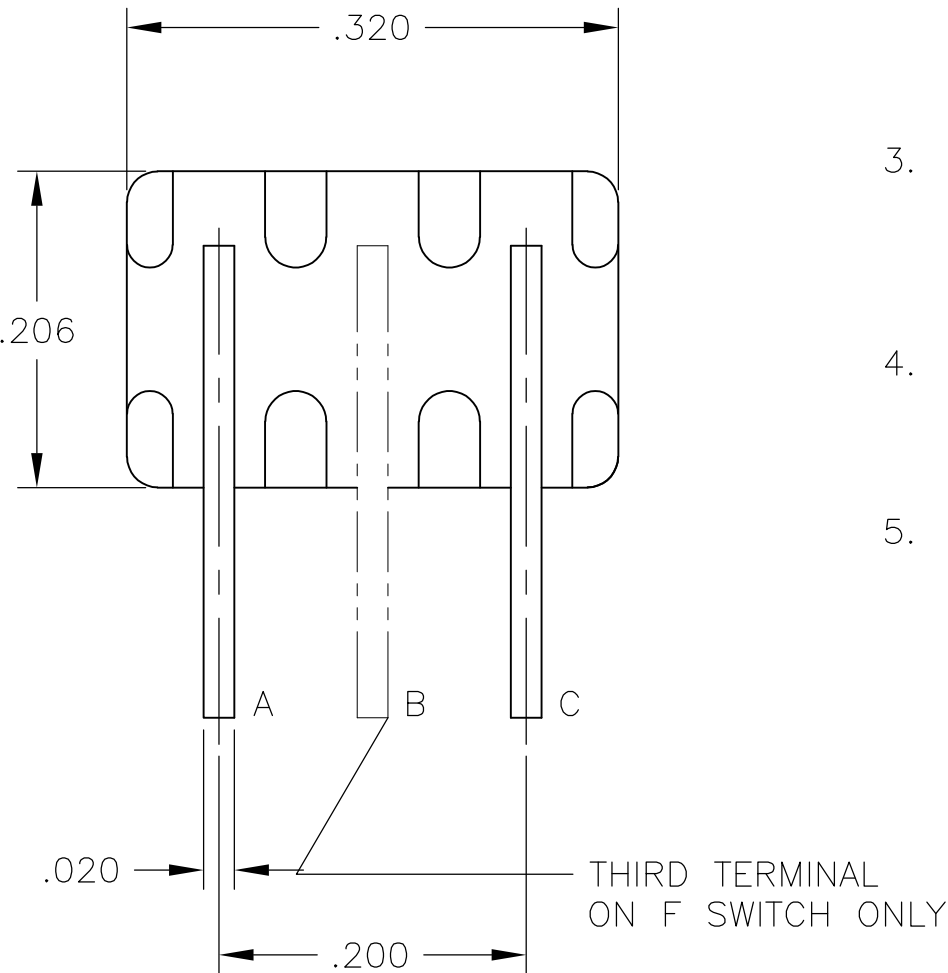
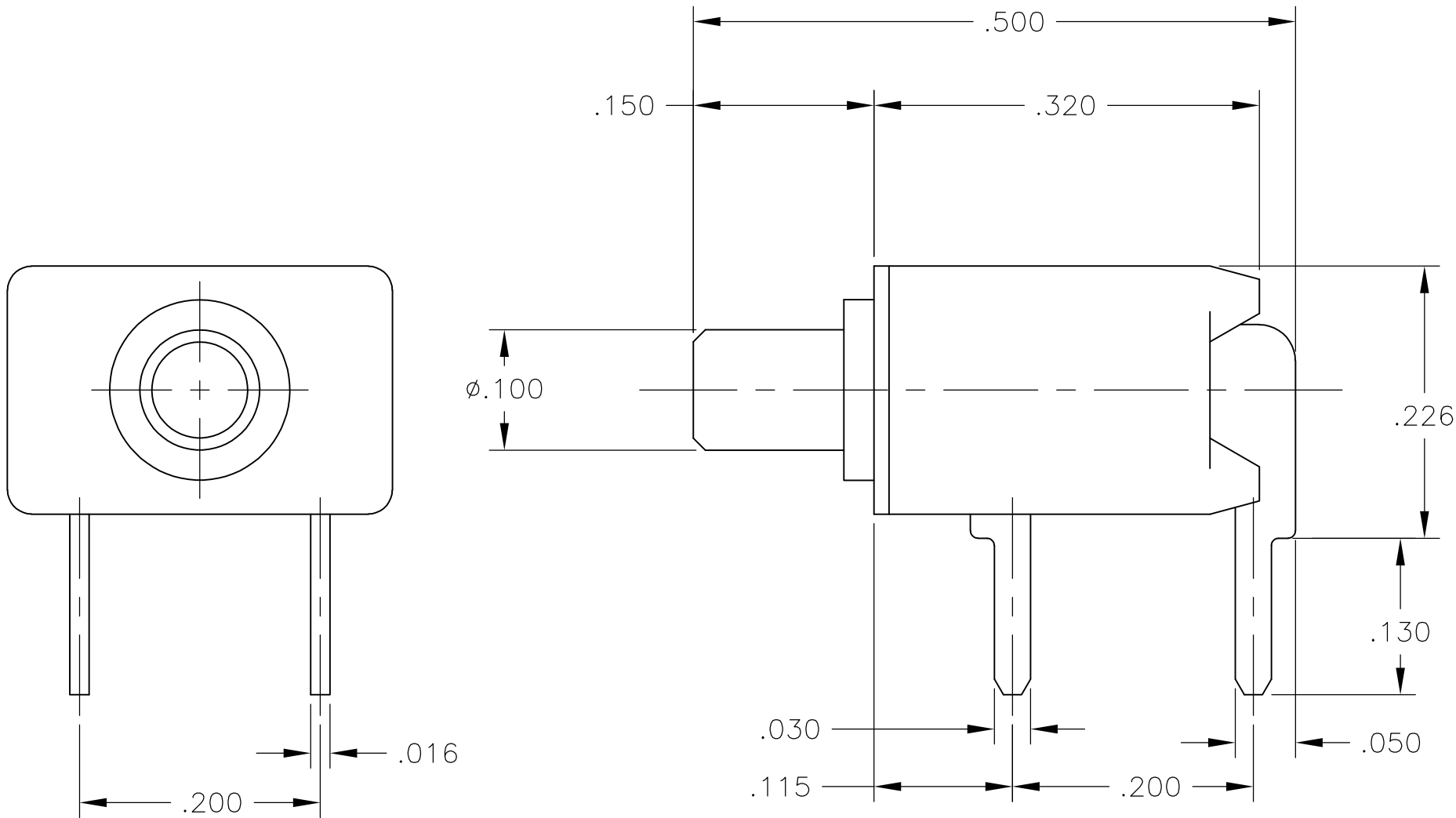
Address: A1208, Overseas Decoration Building, #122 Zhenhua RD., Futian, Shenzhen, China



LOC	DIST	REVISIONS					
AD	00	P	LTR	DESCRIPTION	DATE	OWN	APVD
			B1	REVISED PER ECO-11-005027	11MAR11	RK	HMR

NOTES:

1. **MATERIALS:**  
CASE: THERMOPLASTIC, UL94-V0.  
ACTUATOR BUTTON: THERMOPLASTIC, COLORS: SEE CHART  
MOVING CONTACT: COPPER ALLOY, GOLD PLATED  
FIXED CONTACT: COPPER ALLOY, GOLD PLATED  
TERMINALS: COPPER ALLOY, TIN-LEAD PLATED  
TERMINAL SEAL: SP EPOXY
2. **ELECTRICAL:**  
CONTACT RATING GOLD: 0.4 VA MAX @ 20 VDC OR PEAK AC  
INITIAL CONTACT RESISTANCE: 20 MILLIOHMS MAX  
INSULATION RESISTANCE: 1,000 MEGOHMS AT 500 VDC MIN.  
DIELECTRIC STRENGTH: 1,000 VOLTS  
LIFE EXPECTANCY: 1 POLE = 1000,000 CYCLES  
2 POLES = 80,000 CYCLES.
3. **MECHANICAL:**  
ACTUATION FORCE: SEE TABLE  
ACTUATION TRAVEL: .030 APPROX.
4. **ENVIRONMENTAL:**  
OPERATING TEMPERATURE: -22°F TO +149°F (-30°C TO +65°C)  
STORAGE TEMPERATURE: -22°F TO +149°F (-30°C TO +65°C)
5. INTERPRET DRAWING PER ASME Y14.5M-1984



RECOMMENDED PCB LAYOUT

12 oz [.34Kg]	BLUE	B TO C (MOM.)	B TO A	SPDT MOMENTARY	TPA11FGRA6	3-1437571-9
12 oz [.34Kg]	RED	B TO C (MOM.)	B TO A	SPDT MOMENTARY	TPA11FGRA2	3-1437571-8
12 oz [.34Kg]	BLACK	B TO C (MOM.)	B TO A	SPDT MOMENTARY	TPA11FGRA0	3-1437571-6
9 oz [.26Kg]	BLUE	A TO C	NONE	SPST NORMALLY OPEN	TPA11CGRA6	3-1437571-1
9 oz [.26Kg]	RED	A TO C	NONE	SPST NORMALLY OPEN	TPA11CGRA2	3-1437571-0
9 oz [.26Kg]	BLACK	A TO C	NONE	SPST NORMALLY OPEN	TPA11CGRA0	2-1437571-9
ACTUATION FORCE	BUTTON COLOR	DEPRESSED BUTTON	FREE BUTTON	ACTION	AUGAT PART NUMBER	PART NUMBER
		CONTACTS				

THIS DRAWING IS A CONTROLLED DOCUMENT.		DWN M.BINNER 13DEC2001	TE Connectivity			
DIMENSIONS: INCHES		CHK M.ZITTO 04DEC01				
		APVD M.ZITTO 04DEC01	NAME TPA11CG/FG-RA , SWITCH, PUSH BUTTON			
		PRODUCT SPEC				
MATERIAL SEE TABLE		APPLICATION SPEC				
		WEIGHT -	SIZE A2	CAGE CODE 00779	DRAWING NO C=2-1437571-9	RESTRICTED TO -
		CUSTOMER DRAWING	SCALE 8:1	SHEET 1 of 1	REV B1	