



Chipsmall Limited consists of a professional team with an average of over 10 year of expertise in the distribution of electronic components. Based in Hongkong, we have already established firm and mutual-benefit business relationships with customers from,Europe,America and south Asia,supplying obsolete and hard-to-find components to meet their specific needs.

With the principle of “Quality Parts,Customers Priority,Honest Operation,and Considerate Service”,our business mainly focus on the distribution of electronic components. Line cards we deal with include Microchip,ALPS,ROHM,Xilinx,Pulse,ON,Everlight and Freescale. Main products comprise IC,Modules,Potentiometer,IC Socket,Relay,Connector.Our parts cover such applications as commercial,industrial, and automotives areas.

We are looking forward to setting up business relationship with you and hope to provide you with the best service and solution. Let us make a better world for our industry!



## Contact us

Tel: +86-755-8981 8866 Fax: +86-755-8427 6832

Email & Skype: info@chipsmall.com Web: www.chipsmall.com

Address: A1208, Overseas Decoration Building, #122 Zhenhua RD., Futian, Shenzhen, China



THIS DRAWING IS UNPUBLISHED. RELEASED FOR PUBLICATION  
 © COPYRIGHT BY TYCO ELECTRONICS CORPORATION. ALL RIGHTS RESERVED.

LOC		DIST		REVISIONS			
AD	OO	P	LTR	DESCRIPTION	DATE	DWN	APVD
		B		ECO 06 000585	08AUG06	BSV	MZ

**SPECIFICATIONS:**

**MATERIALS:**

CASE: HIGH TEMPERATURE POLYESTER, UL 94V-0.  
 ACTUATOR BUTTON: THERMOPLASTIC, COLORS: SEE CHART BELOW.  
 MOVING CONTACT: COPPER ALLOY, GOLD PLATED.  
 FIXED CONTACT: COPPER ALLOY, GOLD PLATED.  
 TERMINALS: COPPER ALLOY, TIN LEAD PLATED.  
 TERMINAL SEAL: SP EPOXY  
 DP EPOXY OPTIONAL.

**ELECTRICAL:**

CONTACT RATING: 0.4 VA MAX. @ 20 VDC OR PEAK AC.  
 INITIAL CONTACT RESISTANCE: 20 MILLIOHMS MAX.  
 INSULATION RESISTANCE: 1,000 MEGOHMS @ 500 VDC MIN.  
 DIELECTRIC STRENGTH: 1,000 VAC.  
 LIFE EXPECTANCY: 1 POLE = 60,000 CYCLES  
 2 POLES = 50,000 CYCLES.

**MECHANICAL:**

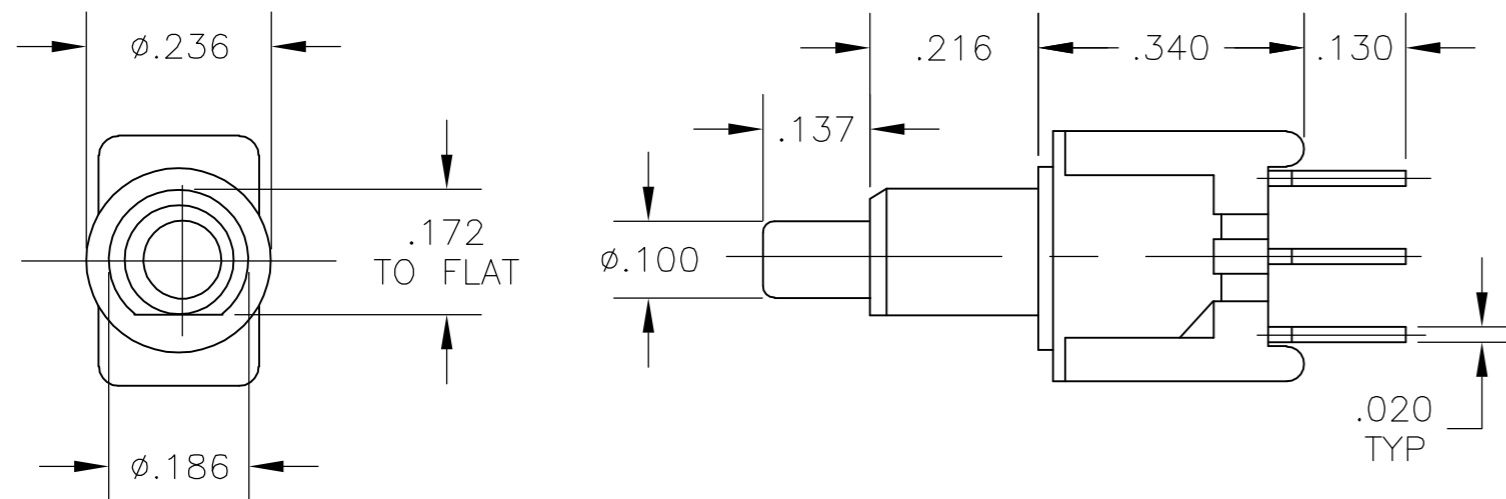
ACTUATION FORCE: 50 TO 400g.  
 ACTUATION TRAVEL: .030 APPROX.

**ENVIRONMENTAL:**

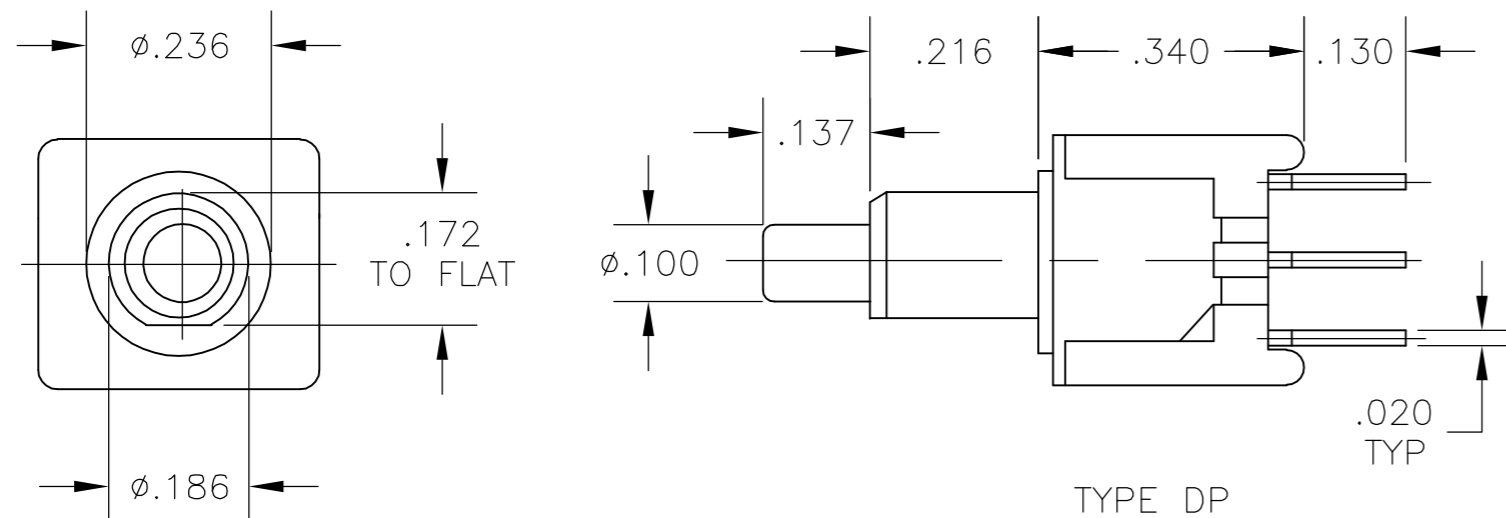
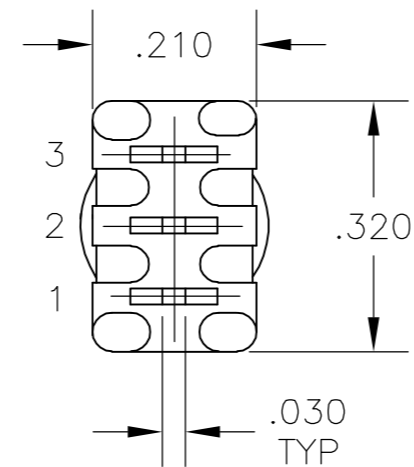
OPERATING TEMPERATURE: -22°F TO +149°F (-30°C TO +65°C).  
 STORAGE TEMPERATURE: -22°F TO +149°F (-30°C TO +65°C).

**NOTES:**

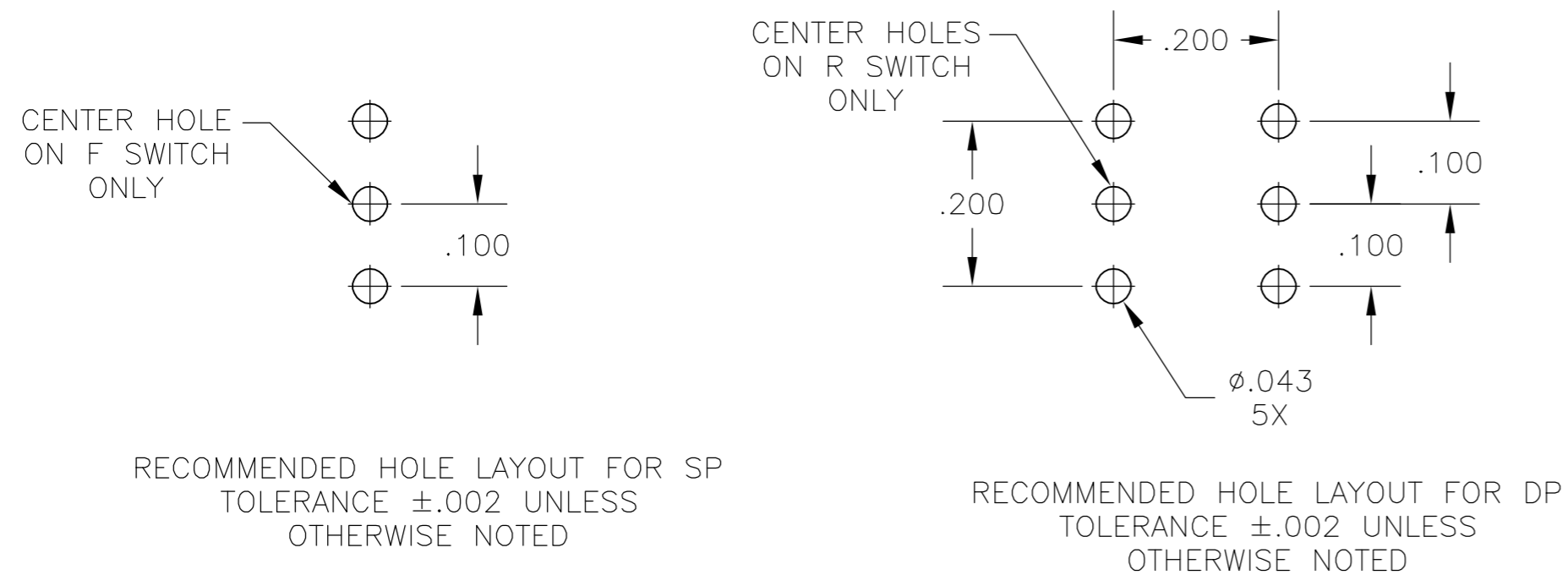
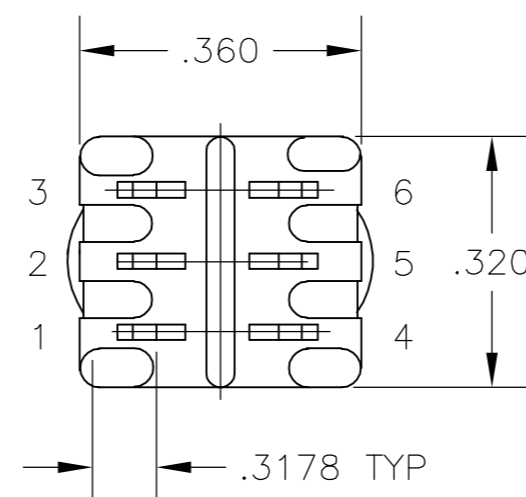
- INTERPRET DRAWING PER ASME Y14.5M-1994.
- SUPPLIED WITH MOUNTING HARDWARE.



TYPE SP



TYPE DP



OBSOLETE	TPB21RGPC2	8-1437571-4
OBSOLETE	TPB21RGPC0	8-1437571-3
	TPB21MGPC2	8-1437571-0
	TPB21MGPC0	7-1437571-9
OBSOLETE	TPB11FGPC6	6-1437571-7
OBSOLETE	TPB11FGPC2	6-1437571-6
	TPB11FGPC0	6-1437571-5
OBSOLETE	TPB11CGPC6	5-1437571-4
	TPB11CGPC2	5-1437571-3
	TPB11CGPC0	5-1437571-1
	ALCO MODEL	TYCO PART NO

TERMINALS CONNECTED WITH BUTTON IN POSITIONS SHOWN.		
SWITCH MODEL	FLAT	FLAT
TPB11CG-PC (*)	OFF	1-3(MOM)
TPB11FG-PC (*)	2-1	2-3(MOM)
TPB21MG-PC (*)	OFF	1-3 (MOM) 4-6
TPB21RG-PC (*)	2-1 5-4	2-3 (MOM) 5-6

NOTE:  
 TERMINAL DESIGNATION NUMBERS ARE FOR REFERENCE ONLY AND DO NOT APPEAR ON SWITCHES.

(*)	BUTTON COLOR	DIMENSIONS: INCHES  TOLERANCES UNLESS OTHERWISE SPECIFIED: 0 PLC ± - 1 PLC ± - 2 PLC ± - 3 PLC ± .010 4 PLC ± - ANGLES ± 1° FINISH SEE SPECIFICATIONS	DWN	12SEP96	 Tyco Electronics Corporation Harrisburg, Pa 17105-3608			
	(0)		BLACK	CHK		-		
	(2)		RED	APVD		-		
	(6)		BLUE	NAME		-		
MATERIAL: SEE SPECIFICATIONS		FINISH: SEE SPECIFICATIONS	PRODUCT SPEC	-	SIZE	CAGE CODE	DRAWING NO	RESTRICTED TO
			APPLICATION SPEC	-	A2	00779	C=5-1437571-1	-
			WEIGHT	-	SCALE		4:1	SHEET
			CUSTOMER DRAWING				1	OF
							1	REV
								B

5-1437571-1

A