



Chipsmall Limited consists of a professional team with an average of over 10 year of expertise in the distribution of electronic components. Based in Hongkong, we have already established firm and mutual-benefit business relationships with customers from,Europe,America and south Asia,supplying obsolete and hard-to-find components to meet their specific needs.

With the principle of “Quality Parts,Customers Priority,Honest Operation,and Considerate Service”,our business mainly focus on the distribution of electronic components. Line cards we deal with include Microchip,ALPS,ROHM,Xilinx,Pulse,ON,Everlight and Freescale. Main products comprise IC,Modules,Potentiometer,IC Socket,Relay,Connector.Our parts cover such applications as commercial,industrial, and automotives areas.

We are looking forward to setting up business relationship with you and hope to provide you with the best service and solution. Let us make a better world for our industry!



## Contact us

Tel: +86-755-8981 8866 Fax: +86-755-8427 6832

Email & Skype: [info@chipsmall.com](mailto:info@chipsmall.com) Web: [www.chipsmall.com](http://www.chipsmall.com)

Address: A1208, Overseas Decoration Building, #122 Zhenhua RD., Futian, Shenzhen, China



LOC	DIST	REVISIONS					
		P	LTR	DESCRIPTION	DATE	DWN	APVD
AD	00		B	ECO-06-000585	10AUG06	BSV	MZ

SPECIFICATIONS:

MATERIALS:  
CASE: HIGH TEMPERATURE POLYSTER,UL 94V-0.  
ACTUATOR BUTTON:THERMOPLASTIC. COLOR: SEE CHART BELOW.  
MOVING CONTACT: COPPER ALLOY. GOLD PLATED OVER NICKEL.  
FIXED CONTACT: COPPER ALLOY. GOLD PLATED OVER NICKEL.  
TERMINALS: COPPER ALLOY.TIN LEAD PLATED.  
TERMINAL SEAL: SP EPOXY.  
DP EPOXY OPTIONAL.

ELECTRICAL:  
CONTACT RATING: GOLD = 0.4 VA MAX. @ 20 VDC OR PEAK AC.  
INITIAL CONTACT RESISTANCE: 20 MILLIOHMS MAX.  
INSULATION RESISTANCE: 1,000 MEGHAOHMS @500 VDC MIN.  
DIELECTRIC STRENGTH: 1,000 VAC @ SEA LEVEL.  
LIFE EXPECTANCY: GOLD 1 POLE=100,000 CYCLES.  
2 POLE=80,000 CYCLES.

MECHANICAL:  
ACTUATION FORCE: 50 TO 400g.  
ACTUATION TRAVEL: .030 APPROX.

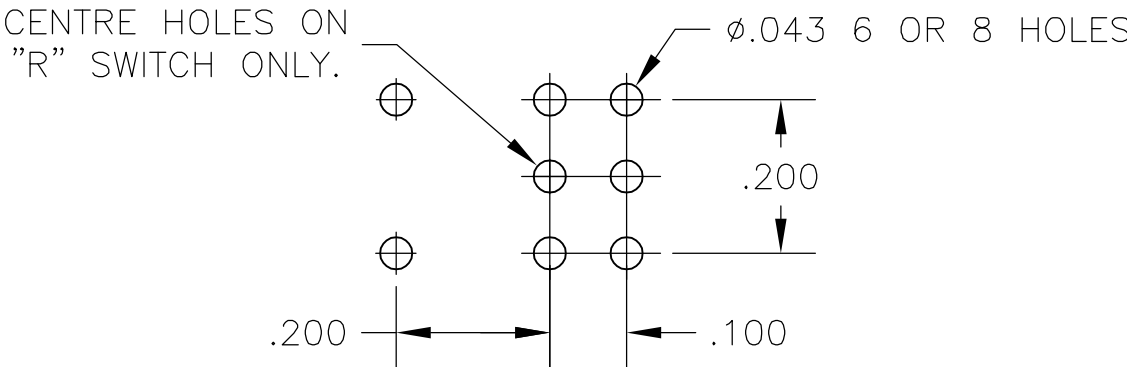
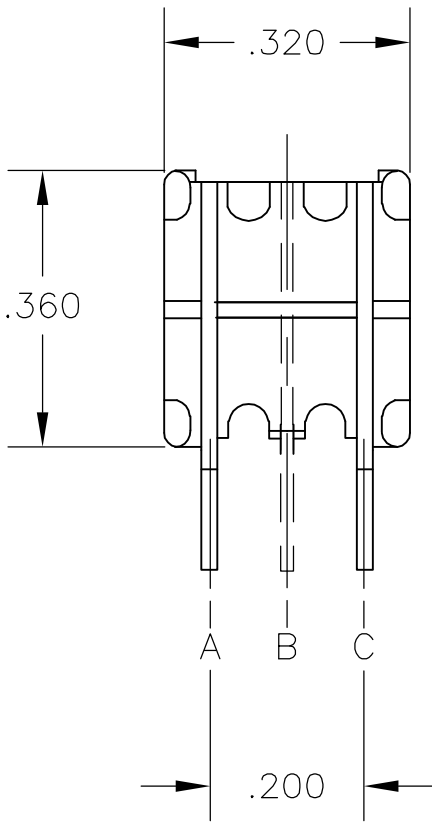
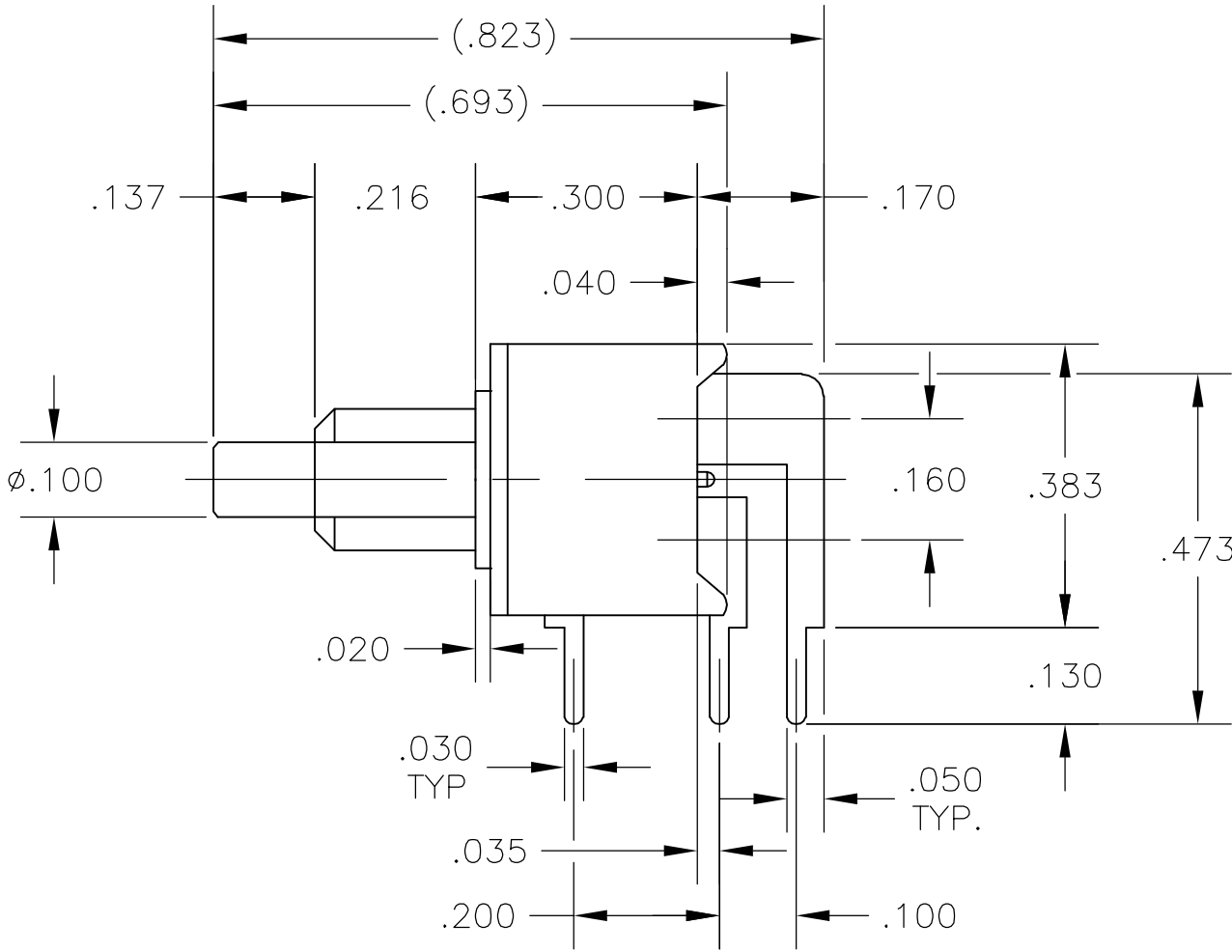
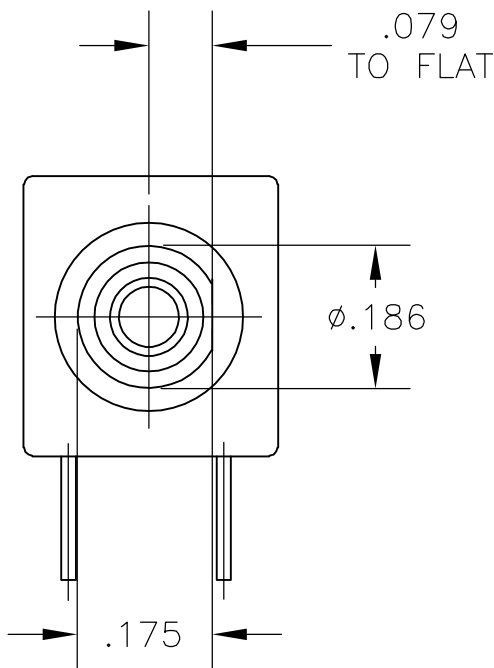
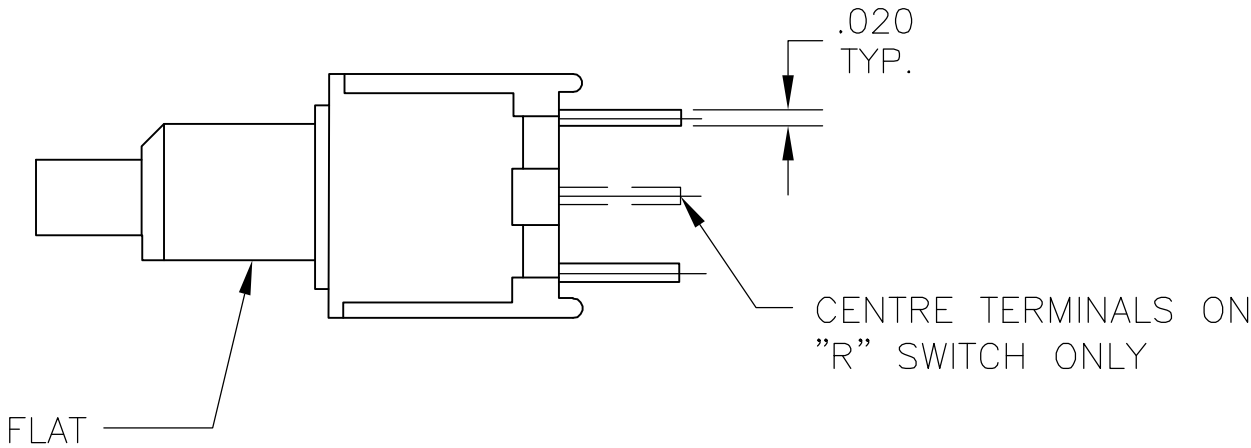
ENVIRONMENTAL:  
OPERATING TEMPERATURE: -22°F TO +149°F (-30°C TO +65°C).  
STORAGE TEMPERATURE: -22°F TO +149°F (-30°C TO +65°C).

NOTES:


1. INTERPRET DRAWING PER ANSI Y14.5M-1994.

(*)	SPECIFY COLORS BUTTON
0	BLACK
2	RED
6	BLUE

CONTACTS			
MODEL NO	ACTION	FREE BUTTONS	DEPRESSED BUTTON
TPB21MG-RA(*)	DPST NORMALLY OPEN	NONE	A TO C
TPB21RG-RA(*)	DPDT MOMENTARY	B TO A	B TO C (MOM)



RECOMMENDED HOLE LAYOUT  
TOLERANCE ±.002 UNLESS  
OTHERWISE NOTED

THIS DRAWING IS A CONTROLLED DOCUMENT.		DWN ED.R	11FEB86	<b>tyco</b> <b>Electronics</b> Tyco Electronics Corporation Harrisburg, Pa 17105-3608						
DIMENSIONS: INCHES		CHK J.S	13FEB86	NAME  SUBMINATURE PUSHBUTTON SWITCH TPB21MG/RG-RA(*)						
TOLERANCES UNLESS OTHERWISE SPECIFIED:		APVD S.D.C	18FEB86							
		PRODUCT SPEC —								
		APPLICATION SPEC —								
MATERIAL		WEIGHT —		SIZE A2	CAGE CODE 00779	DRAWING NO C=8-1437571-6	RESTRICTED TO —			
SEE SPECIFICATIONS		FINISH		CUSTOMER DRAWING				SCALE 4:1	SHEET 1 of 1	REV B