



Chipsmall Limited consists of a professional team with an average of over 10 year of expertise in the distribution of electronic components. Based in Hongkong, we have already established firm and mutual-benefit business relationships with customers from,Europe,America and south Asia,supplying obsolete and hard-to-find components to meet their specific needs.

With the principle of “Quality Parts,Customers Priority,Honest Operation,and Considerate Service”,our business mainly focus on the distribution of electronic components. Line cards we deal with include Microchip,ALPS,ROHM,Xilinx,Pulse,ON,Everlight and Freescale. Main products comprise IC,Modules,Potentiometer,IC Socket,Relay,Connector.Our parts cover such applications as commercial,industrial, and automotives areas.

We are looking forward to setting up business relationship with you and hope to provide you with the best service and solution. Let us make a better world for our industry!



Contact us

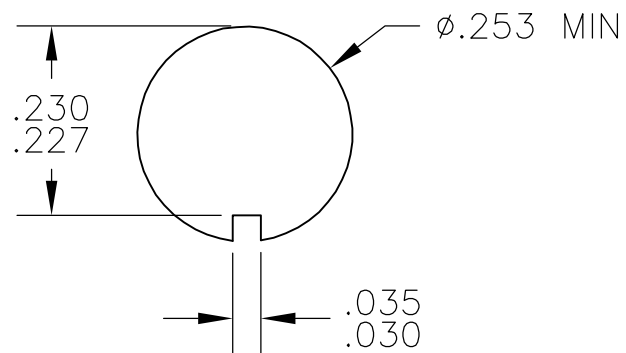
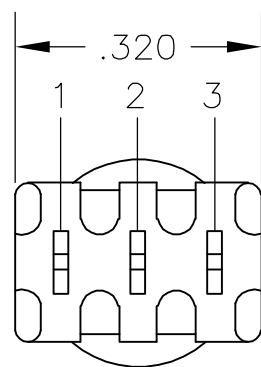
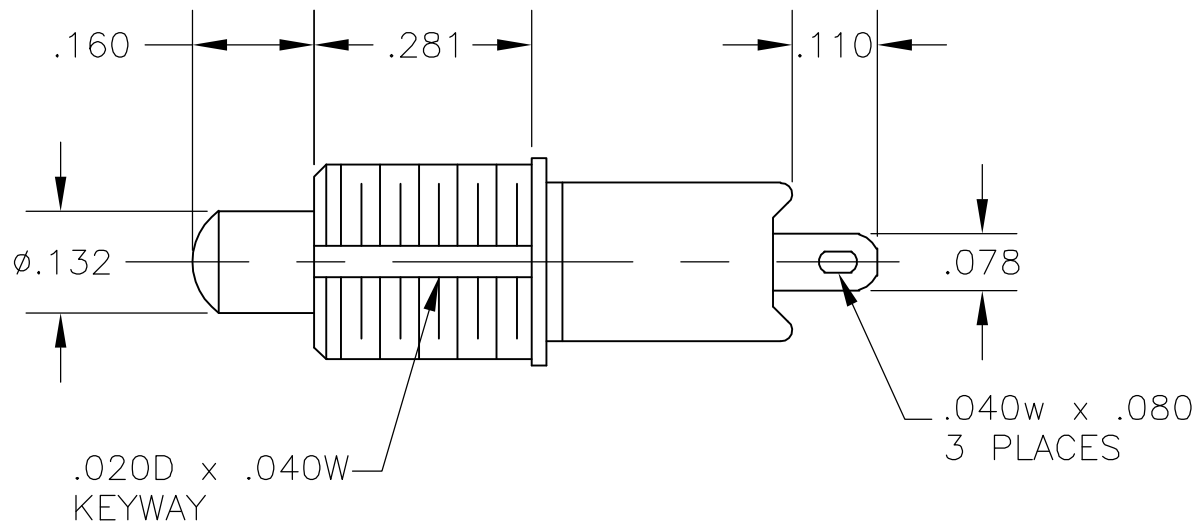
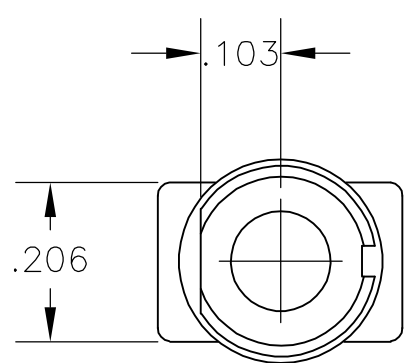
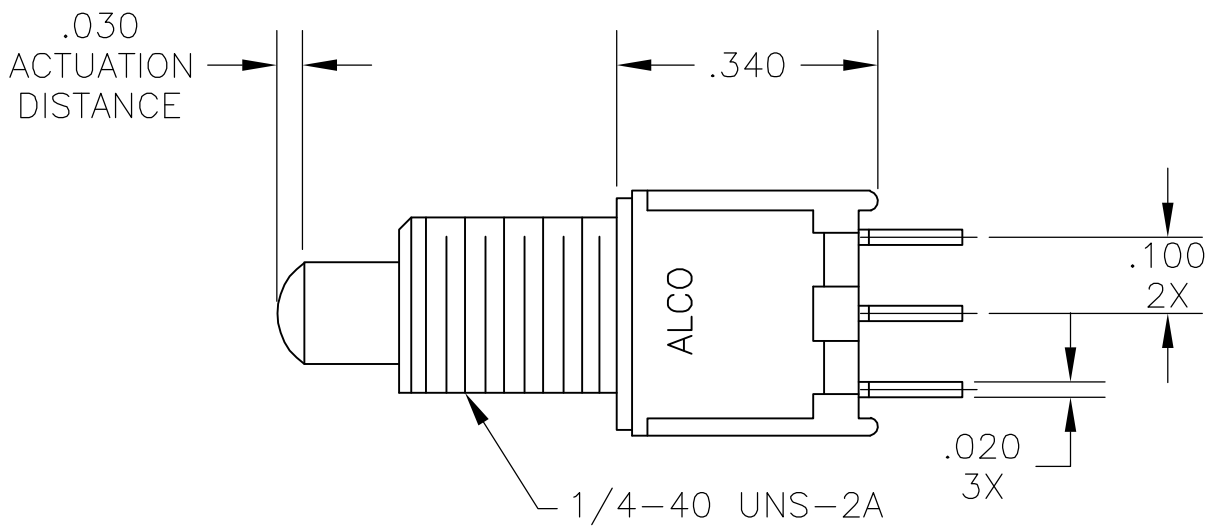
Tel: +86-755-8981 8866 Fax: +86-755-8427 6832

Email & Skype: info@chipsmall.com Web: www.chipsmall.com

Address: A1208, Overseas Decoration Building, #122 Zhenhua RD., Futian, Shenzhen, China



LOC	DIST	REVISIONS					
		P	LTR	DESCRIPTION	DATE	DWN	APVD
AD	00		B	ECO 06 000585	10AUG06	BSV	MZ



RECOMMENDED PANEL LAYOUT
TOLERANCE $\pm .002$ UNLESS
OTHERWISE SPECIFIED

BUTTON COLOR AVAILABLE	
(0)	BLACK
(2)	RED
(6)	BLUE

SPECIFICATIONS:

MATERIALS:

CASE: HIGH TEMPERATURE POLYESTER.
ACTUATOR BUTTON: POLYAMIDE, COLORS: SEE CHART BELOW
MOVING CONTACT: COPPER ALLOY, SILVER PLATE
FIXED CONTACT/TERMINAL: COPPER ALLOY, TIN/LEAD PLATE
TERMINAL SEAL: SP EPOXY.

ELECTRICAL:

CONTACT RATING: 1 AMP @ 125 VAC OR 28 VDC.
INITIAL CONTACT RESISTANCE: 20 MILLIOHMS MAX.
INSULATION RESISTANCE: 1000 MEGOHMS @ 500 VDC MIN.
DIELECTRIC STRENGTH: 1000 VOLTS RMS @ SEA LEVEL
LIFE EXPECTANCY: 60,000 CYCLES

MECHANICAL:

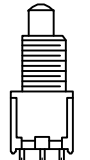

ACTUATION FORCE: 50 TO 400 GRAMS
ACTUATION TRAVEL: .030"

ENVIRONMENTAL:

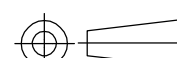
OPERATING TEMPERATURE: -22°F TO $+140^{\circ}\text{F}$ (-30°C TO $+65^{\circ}\text{C}$)
STORAGE TEMPERATURE: -22°F TO $+140^{\circ}\text{F}$ (-30°C TO $+65^{\circ}\text{C}$)

NOTES:

- INTERPRET DRAWING PER ASME Y14.5M-1982
- HARDWARE INCLUDED: (2) HEX NUTS
(1) LOCK WASHER

TERMINALS CONNECTED WHEN TOGGLE IN POSITIONS SHOWN		
SWITCH NO.	 123	 123
TPF13C(*)	OFF	3 TO 1(MOM)
TPF13F(*)	2 TO 1	2 TO 3(MOM)
NOTE: DESIGNATION NUMBERS ARE FOR REFERENCE ONLY AND DO NOT APPEAR ON THE SWITCHES		

T & B D/N 40311-SD

THIS DRAWING IS A CONTROLLED DOCUMENT.		DWN L. COLE	29MAR00	<div><div>tyco</div><div>Electronics</div></div>		Tyco Electronics Corporation		
		CHK —	—			Harrisburg, Pa 17105-3608		
DIMENSIONS: INCHES		TOLERANCES UNLESS OTHERWISE SPECIFIED:		APVD —	NAME	PUSH BUTTON SWITCH (TPF13 SERIES)		
		PRODUCT SPEC —						
		APPLICATION SPEC —						
		—						
		ANGLES ± 1°		SIZE	CAGE CODE	DRAWING NO	RESTRICTED TO	
MATERIAL —		FINISH —		WEIGHT —	A2	00779	C=8-1437572-2	—
CUSTOMER DRAWING				SCALE	4:1	SHEET	1 OF 1	REV B