



Chipsmall Limited consists of a professional team with an average of over 10 year of expertise in the distribution of electronic components. Based in Hongkong, we have already established firm and mutual-benefit business relationships with customers from,Europe,America and south Asia,supplying obsolete and hard-to-find components to meet their specific needs.

With the principle of “Quality Parts,Customers Priority,Honest Operation,and Considerate Service”,our business mainly focus on the distribution of electronic components. Line cards we deal with include Microchip,ALPS,ROHM,Xilinx,Pulse,ON,Everlight and Freescale. Main products comprise IC,Modules,Potentiometer,IC Socket,Relay,Connector.Our parts cover such applications as commercial,industrial, and automotives areas.

We are looking forward to setting up business relationship with you and hope to provide you with the best service and solution. Let us make a better world for our industry!



Contact us

Tel: +86-755-8981 8866 Fax: +86-755-8427 6832

Email & Skype: info@chipsmall.com Web: www.chipsmall.com

Address: A1208, Overseas Decoration Building, #122 Zhenhua RD., Futian, Shenzhen, China



THIS DRAWING IS UNPUBLISHED.

RELEASED FOR PUBLICATION

© COPYRIGHT

BY TYCO ELECTRONICS CORPORATION.

ALL RIGHTS RESERVED.

| LOC | DIST | REVISIONS | | | | | |
|-----|------|-----------|-----|---------------|---------|-----|------|
| AD | 00 | P | LTR | DESCRIPTION | DATE | DWN | APVD |
| | | | B | ECO 06 000585 | 10AUG06 | BSV | MZ |

SPECIFICATIONS:

MATERIALS:
CASE: HIGH TEMPERATURE POLYESTER.
ACTUATOR BUTTON: POLYAMIDE, COLORS: SEE CHART BELOW
MOVING CONTACT: COPPER ALLOY, GOLD OVER NICKEL PLATE
FIXED CONTACT/TERMINAL: COPPER ALLOY, TIN/LEAD PLATE
HEX. NUT: STEEL
FLAT WASHER: STEEL
TERMINAL SEAL: OPTIONAL.

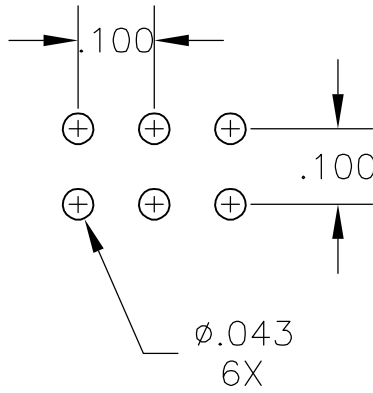
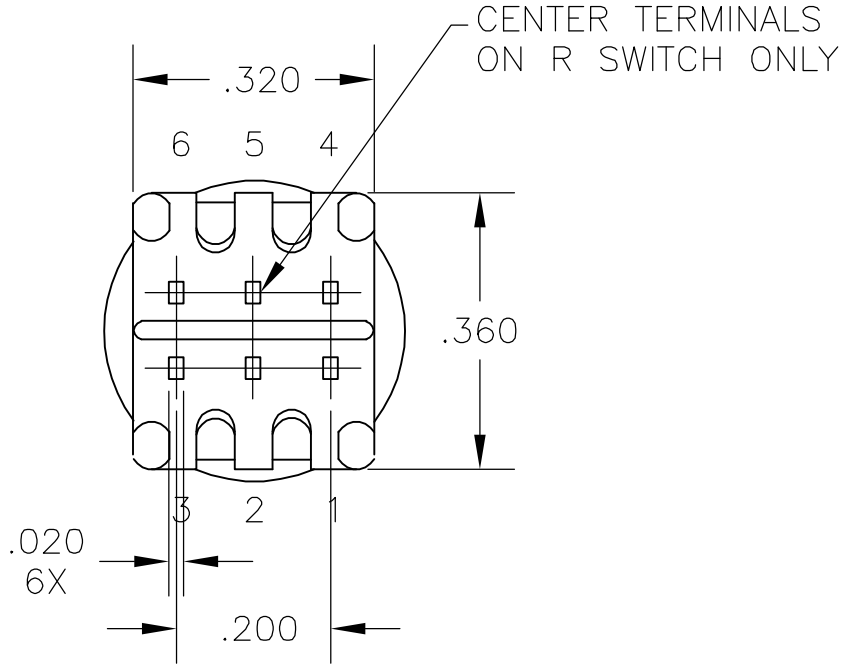
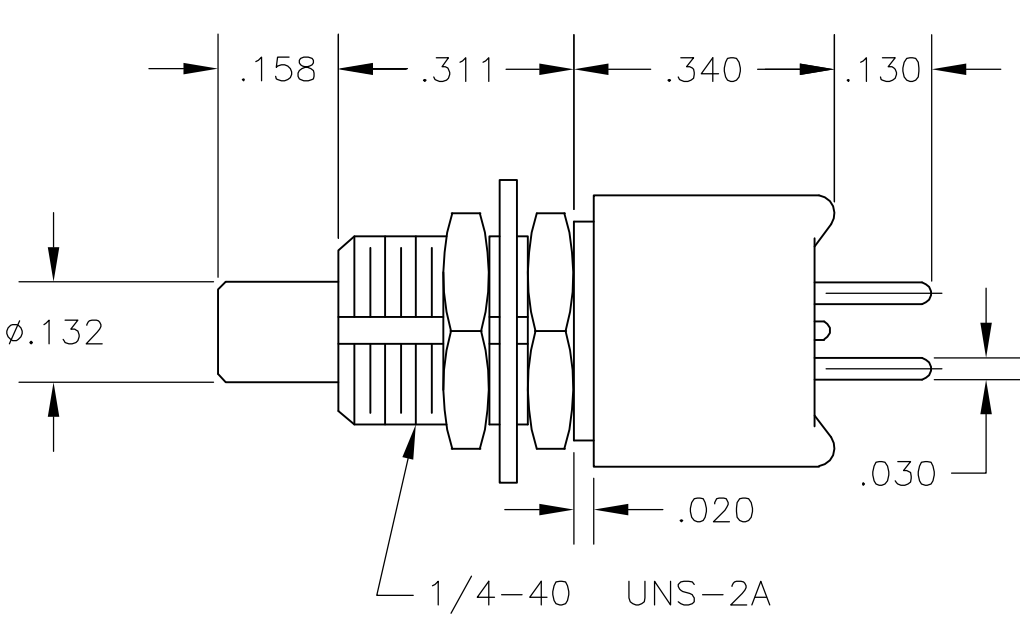
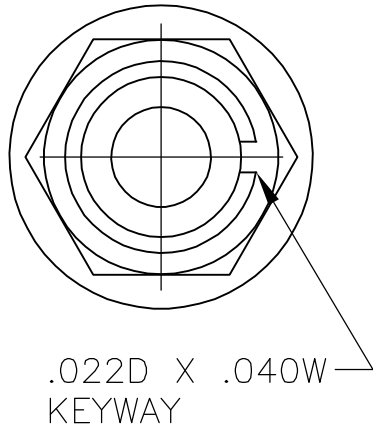
ELECTRICAL:
CONTACT RATING: 0.4 VA MAX. @ 20 VDCOR PEAK AC.
INITIAL CONTACT RESISTANCE: 20 MILLIOHMS MAX.
INSULATION RESISTANCE: 1000 MEGOHMS @ 500 VDC MIN.
DIELECTRIC STRENGTH: 1000 VOLTS RMS @ SEA LEVEL
LIFE EXPECTANCY: 80,000 CYCLES

MECHANICAL:
ACTUATION FORCE: 50 TO 400 GRAMS
ACTUATION TRAVEL: .030"

ENVIRONMENTAL:
OPERATING TEMPERATURE: -22°F TO +149°F (-30°C TO +65°C)
STORAGE TEMPERATURE: -22°F TO +149°F (-30°C TO +65°C)

NOTES:

1. INTERPRET DRAWING PER ASME Y14.5M-1982



RECOMMENDED HOLE LAYOUT
TOLERANCE ±.002 UNLESS
OTHERWISE NOTED

| (*) | ACTUATOR BUTTON COLOR |
|-----|--------------------------|
| (0) | BLACK |
| (2) | RED |
| (6) | BLUE |

AUGAT D/N 40303

| | | | |
|---------------------|----------------|--------------------|-----------|
| 5-6,2-3 (MOM) | 4-5,1-2 | DPDT MOMENTARY | TPF21R-PC |
| 4-6,1-3 | NONE | DPST NORMALLY OPEN | TPF21M-PC |
| DEPRESSED BUTTON | FREE BUTTON | ACTION | MODEL NO. |
| CONTACTS | | | |

| | | | | | | | |
|--|---|------------------|---------|---|-----------|---------------|---------------|
| THIS DRAWING IS A CONTROLLED DOCUMENT. | | DWN | 02OCT96 | tyco Electronics Tyco Electronics Corporation Harrisburg, Pa 17105-3608 | | | |
| DIMENSIONS: INCHES | | CHK | - | | | | |
| | TOLERANCES UNLESS OTHERWISE SPECIFIED: | APVD | - | NAME SUBMINATURE PUSH BUTTON SWITCH PC 1/4-40 BUSHING-TPF21*GPC(*) | | | |
| | | PRODUCT SPEC | - | | | | |
| | | APPLICATION SPEC | - | | | | |
| | | FINISH | - | | | | |
| MATERIAL SEE SPECIFICATIONS | SEE SPECIFICATIONS | WEIGHT | - | SIZE | CAGE CODE | DRAWING NO | RESTRICTED TO |
| | | CUSTOMER DRAWING | | A2 | 00779 | C=8-1437572-7 | - |
| | | | | SCALE | 4:1 | SHEET | 1 OF 1 |
| | | | | | | REV | B |