



Chipsmall Limited consists of a professional team with an average of over 10 year of expertise in the distribution of electronic components. Based in Hongkong, we have already established firm and mutual-benefit business relationships with customers from,Europe,America and south Asia,supplying obsolete and hard-to-find components to meet their specific needs.

With the principle of “Quality Parts,Customers Priority,Honest Operation,and Considerate Service”,our business mainly focus on the distribution of electronic components. Line cards we deal with include Microchip,ALPS,ROHM,Xilinx,Pulse,ON,Everlight and Freescale. Main products comprise IC,Modules,Potentiometer,IC Socket,Relay,Connector.Our parts cover such applications as commercial,industrial, and automotives areas.

We are looking forward to setting up business relationship with you and hope to provide you with the best service and solution. Let us make a better world for our industry!



Contact us

Tel: +86-755-8981 8866 Fax: +86-755-8427 6832

Email & Skype: info@chipsmall.com Web: www.chipsmall.com

Address: A1208, Overseas Decoration Building, #122 Zhenhua RD., Futian, Shenzhen, China



THIS DRAWING IS UNPUBLISHED. RELEASED FOR PUBLICATION
 © COPYRIGHT BY TYCO ELECTRONICS CORPORATION. ALL RIGHTS RESERVED.

LOC		DIST		REVISIONS			
AD	OO	P	LTR	DESCRIPTION	DATE	DWN	APVD
		B		ECO-06-000585	14AUG06	BSV	MZ

SPECIFICATIONS:

MATERIALS:
 CASE: HIGH TEMPERATURE POLYESTER, UL 94V-0.
 ACTUATOR BUTTON: POLYAMIDE, COLOR: SEE CHART BELOW.
 HEXNUT: STAINLESS STEEL.
 WASHER: STAINLESS STEEL.
 MOVING CONTACT: COPPER ALLOY, TIN/LEAD PLATE.
 FIXED CONTACT/TERMINAL: COPPER ALLOY, TIN/LEAD PLATE.
 TERMINAL SEAL: OPTIONAL.

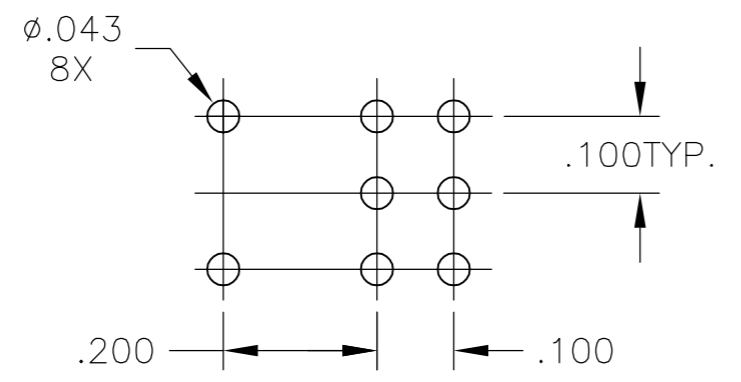
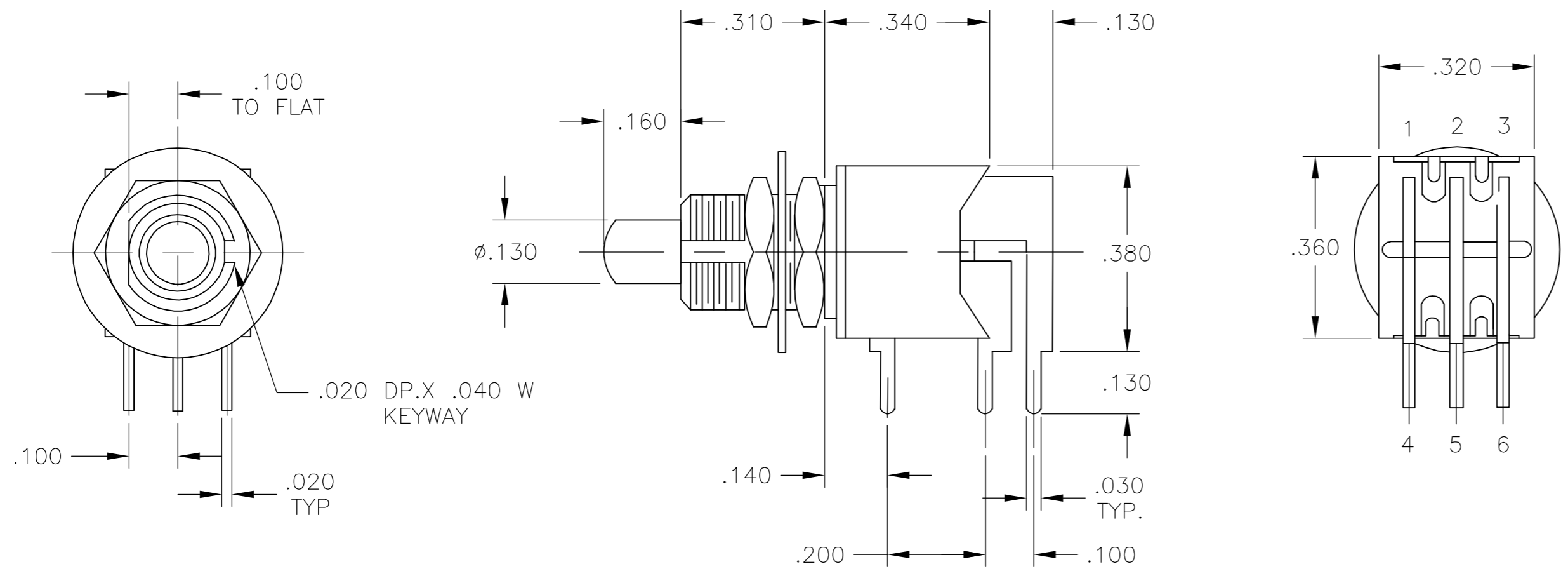
ELECTRICAL:
 CONTACT RATING: 0.4 VA MAX. @ 20 VDC OR PEAK AC.
 INITIAL CONTACT RESISTANCE: 20 MILLIOHMS MAX.
 INSULATION RESISTANCE: 1,000 MEGOHMS @ 500 VDC MIN.
 DIELECTRIC STRENGTH: 1,000 VOLTS RMS @ SEA LEVEL.
 LIFE EXPECTANCY: 80,000 CYCLES.

MECHANICAL:
 ACTUATION FORCE: 50 TO 400 GRAMS.
 ACTUATION TRAVEL: .030 APPROX.

ENVIRONMENTAL:
 OPERATING TEMPERATURE: -22°F TO +149°F (-30°C TO +65°C).
 STORAGE TEMPERATURE: -22°F TO +149°F (-30°C TO +65°C).

NOTES:

1. INTERPRET DRAWING PER ANSI Y14.5M-1982.



TPF21MG RA (*)	DPST	NONE	(1-3), (4-6)
TPF21RG RA (*)	DPDT	1-2, 4-5	(2-3), (5-6)
MODEL NO	TYPE		

TERMINALS CONNECTED WHEN PLUNGER IS IN POSITION SHOWN

TERMINAL DESIGNATION NUMBERS ARE FOR REFERENCE ONLY AND DO NOT APPEAR ON SWITCHES

() INDICATES MOMENTARY.

NO CENTER TERMINAL ON "M" ACTION SWITCH

(*)-SPECIFY COLOR.
 0=BLACK
 2=RED
 6=BLUE.

THIS DRAWING IS A CONTROLLED DOCUMENT.		DWN	23SEP96	tyco Electronics	Tyco Electronics Corporation Harrisburg, Pa 17105-3608		
DIMENSIONS: INCHES		CHK	-		NAME		
TOLERANCES UNLESS OTHERWISE SPECIFIED:		APVD	-	PRODUCT SPEC			
0 PLC ± -		APPLICATION SPEC	-	PUSHBUTTON SWITCH (TPF21 RA(*) SERIES)			
1 PLC ± -		WEIGHT		SIZE	CAGE CODE	DRAWING NO	RESTRICTED TO
2 PLC ± -		FINISH		A2	00779	C=8-1437572-9	-
3 PLC ± .010		MATERIAL		SCALE 4:1 SHEET 1 OF 1 REV B			
4 PLC ± -		SEE SPECIFICATIONS		CUSTOMER DRAWING			
ANGLES ± 1°							

8-1437572-9