



Chipsmall Limited consists of a professional team with an average of over 10 year of expertise in the distribution of electronic components. Based in Hongkong, we have already established firm and mutual-benefit business relationships with customers from,Europe,America and south Asia,supplying obsolete and hard-to-find components to meet their specific needs.

With the principle of “Quality Parts,Customers Priority,Honest Operation,and Considerate Service”,our business mainly focus on the distribution of electronic components. Line cards we deal with include Microchip,ALPS,ROHM,Xilinx,Pulse,ON,Everlight and Freescale. Main products comprise IC,Modules,Potentiometer,IC Socket,Relay,Connector.Our parts cover such applications as commercial,industrial, and automotives areas.

We are looking forward to setting up business relationship with you and hope to provide you with the best service and solution. Let us make a better world for our industry!



## Contact us

Tel: +86-755-8981 8866 Fax: +86-755-8427 6832

Email & Skype: info@chipsmall.com Web: www.chipsmall.com

Address: A1208, Overseas Decoration Building, #122 Zhenhua RD., Futian, Shenzhen, China



# Telpower® DC Power Distribution Fuses

## 170 Volts, DC, 70-800 Amps

TPL



**Catalog Symbol:** TPL

DC Power Distribution Fuses  
Current-Limiting

**Ampere Rating:** 70 to 800 Amperes

**Voltage Rating:** 170 Volts DC

**Interrupting Rating:** 100,000A

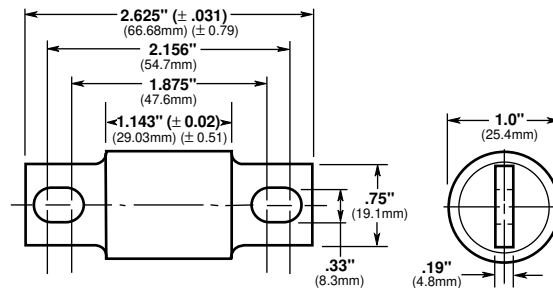
Silver-plated terminals

**Agency Approvals:**

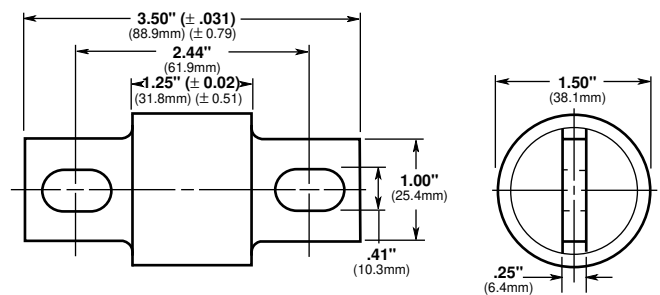
UL Recognized, Guide JFHR2, File E56412

Bellcore

**Dimensional Data**



TPL-BA, TPL-BB, TPL-BC, TPL-BD, TPL-BE,  
TPL-BF, TPL-BG, TPL-BH, TPL-BK, AND TPL-BL



TPL-CN, TPL-CO, TPL-CR, TPL-CU,  
TPL-CV, TPL-CZ, and TPL-CZH

**Catalog Numbers, Carton Quantity and Weight**

Catalog Number	Ampere Rating	Carton Qty.	Weight*	
			Lbs.	Kg.
TPL-BA	70	5	1.6	0.73
TPL-BB	80	5	1.6	0.73
TPL-BC	90	5	1.6	0.73
TPL-BD	100	5	1.6	0.73
TPL-BE	125	5	1.6	0.73
TPL-BF	150	5	1.6	0.73
TPL-BG	175	5	1.6	0.73
TPL-BH	200	5	1.6	0.73
TPL-BK	225	5	1.6	0.73
TPL-BL	250	5	1.6	0.73
TPL-CN	300	1	0.9	0.4
TPL-CO	350	1	0.9	0.4
TPL-CR	400	1	0.9	0.4
TPL-CU	450	1	0.9	0.4
TPL-CV	500	1	0.9	0.4
TPL-CZ	600	1	0.9	0.4
TPL-CZH	800	1	0.9	0.4

\*Weight per carton.

**General Information:**

- Designed for DC power distribution systems.
- Recognized branch circuit protection.
- Current-limiting capability.
- Complete system coordination capability.
- Energy savings with low watts loss, low operating temperatures, and minimum I<sup>2</sup>t levels.
- Use with Telpower **15100, 15200, TPHCS and TP158HC** disconnect systems.
- For replacement of Bussmann's UBO fuses, a **TPL-TA** adapter kit is necessary.
- Spare fuseholders:

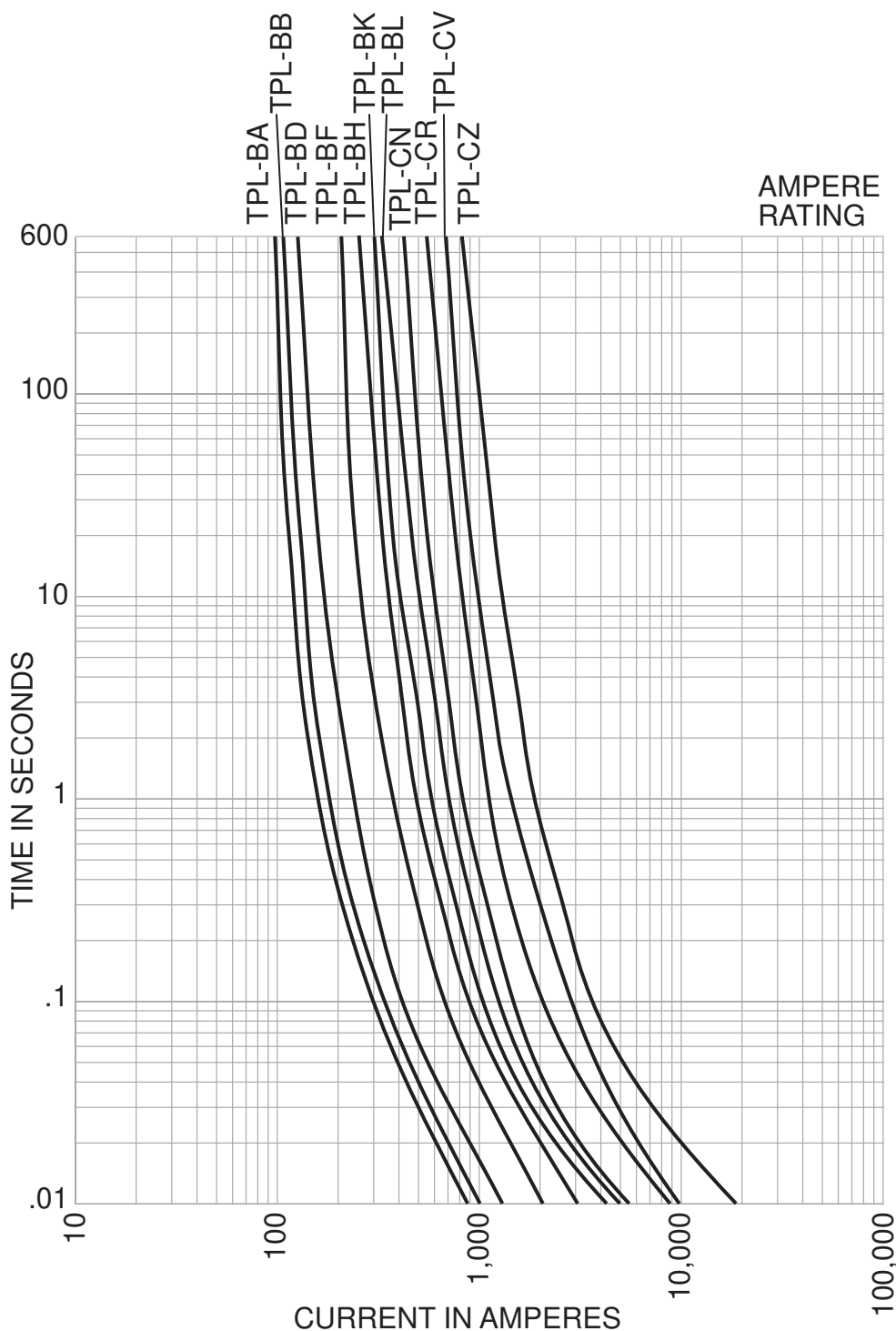
CE CE logo denotes compliance with European Union Low Voltage Directive (50-1000 VAC, 75-1500 VDC). Refer to BIF document #8002 or contact Bussmann Application Engineering at 636-527-1270 for more information.

# Telpower® DC Power Distribution Fuses

## 170 Volts DC, 70-800 Amps

TPL

### Time-Current Characteristic Curves—Average Melt



The only controlled copy of this BIF document is the electronic read-only version located on the Bussmann Network Drive. All other copies of this document are by definition uncontrolled. This bulletin is intended to clearly present comprehensive product data and provide technical information that will help the end user with design applications. Bussmann reserves the right, without notice, to change design or construction of any products and to discontinue or limit distribution of any products. Bussmann also reserves the right to change or update, without notice, any technical information contained in this bulletin. Once a product has been selected, it should be tested by the user in all possible applications.