



Chipsmall Limited consists of a professional team with an average of over 10 year of expertise in the distribution of electronic components. Based in Hongkong, we have already established firm and mutual-benefit business relationships with customers from,Europe,America and south Asia,supplying obsolete and hard-to-find components to meet their specific needs.

With the principle of "Quality Parts,Customers Priority,Honest Operation,and Considerate Service",our business mainly focus on the distribution of electronic components. Line cards we deal with include Microchip,ALPS,ROHM,Xilinx,Pulse,ON,Everlight and Freescale. Main products comprise IC,Modules,Potentiometer,IC Socket,Relay,Connector.Our parts cover such applications as commercial,industrial, and automotives areas.

We are looking forward to setting up business relationship with you and hope to provide you with the best service and solution. Let us make a better world for our industry!



Contact us

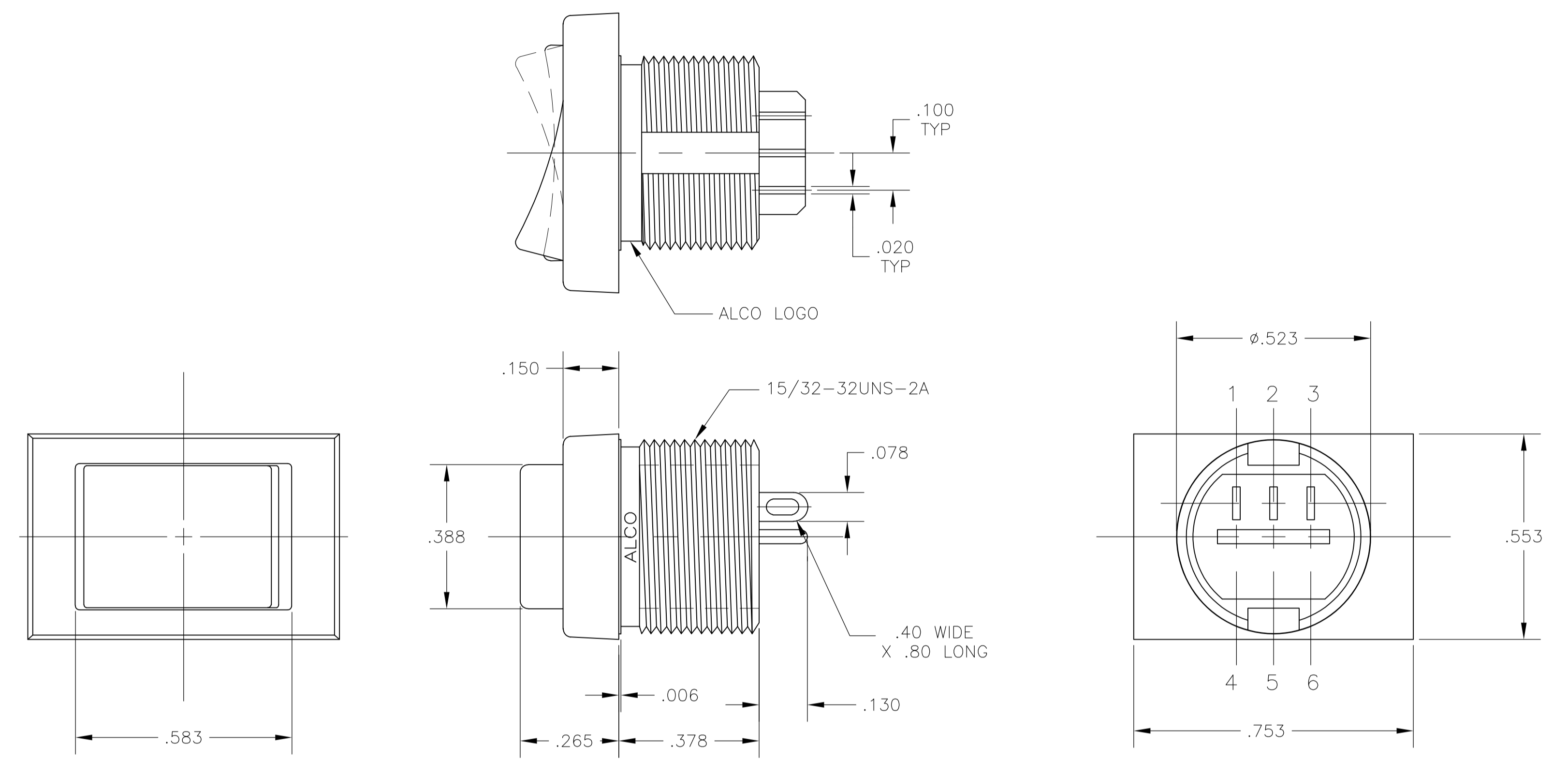
Tel: +86-755-8981 8866 Fax: +86-755-8427 6832

Email & Skype: info@chipsmall.com Web: www.chipsmall.com

Address: A1208, Overseas Decoration Building, #122 Zhenhua RD., Futian, Shenzhen, China

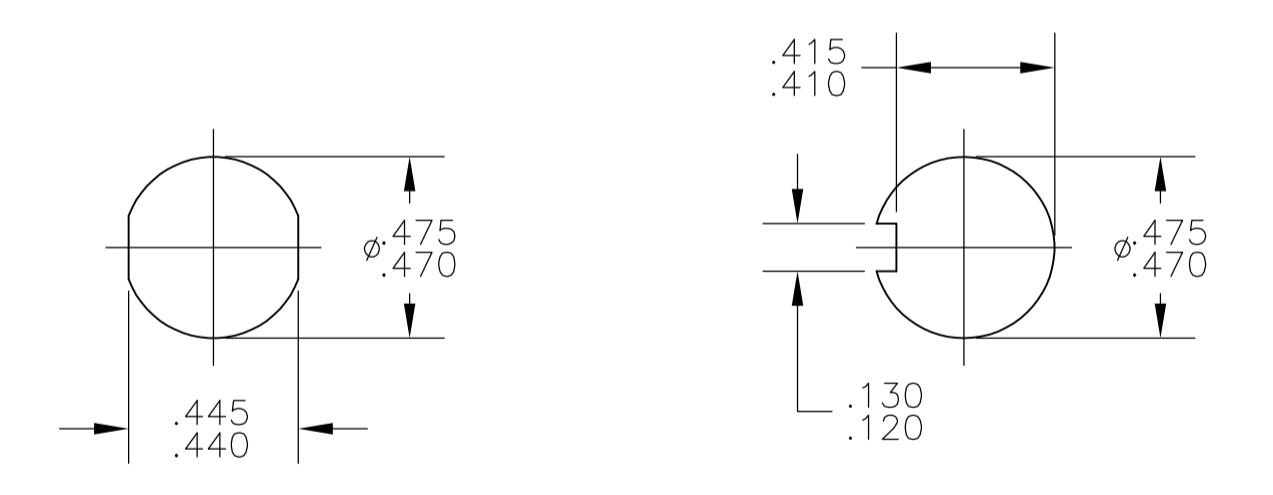


- ALL MATERIALS AND FINISHES COMPLY WITH EU DIRECTIVE 2002/95/EC OF 27JAN2003 (RoHS).
- TERMINAL NUMBERS ARE FOR REFERENCE ONLY AND DO NOT APPEAR ON THE SWITCHES.
- MOUNTING HARDWARE: (1) HEX NUT AND (1) INTERNAL TOOTH LOCKWASHER SUPPLIED WITH SWITCH.



MATERIAL CHART		
COMPONENT NAME	BASE MATERIAL	FINISH
CASE	PPO, BLACK, UL94-HB	
ROCKER	NYLON 6 /6, BLACK, UL-94-V2	
SPRING	MUSIC WIRE	
SPRING, F & G FUNCTIONS	MUSIC WIRE	
INSULATOR	POLYETHERIMIDE, NATURAL	
TERMINAL, END, D, F & G FUNCTIONS	SILVER CLAD COPPER	SILVER OVER NICKEL
TERMINAL, CENTER, D & G FUNCTIONS	BRASS	GOLD OVER NICKEL
TERMINAL, CENTER, F FUNCTION	SILVER CLAD COPPER	SILVER OVER NICKEL
YOKE, G FUNCTION	BRASS	GOLD OVER NICKEL
ROCKER CONTACT, D & F FUNCTIONS	SILVER CLAD COPPER	
ROCKER CONTACT, G FUNCTION	SILVER CLAD COPPER	SILVER
NUT	BRASS	NICKEL
LOCKWASHER	STAINLESS STEEL	
TERMINAL SEAL	ACRYLIC RESIN	

SPECIFICATION CHART	
RATING	3A @ 125 VAC OR 28 VDC, RESISTIVE
INITIAL CONTACT RESISTANCE	20 MILLIOHMS MAX.
INSULATION RESISTANCE	1,000 MEGAOHMS MIN @ 500 VDC
DIELECTRIC WITHSTANDING VOLTAGE	500 V RMS AT SEA LEVEL
ELECTRICAL LIFE, 2 POSITION	80,000 CYCLES
ELECTRICAL LIFE, 3 POSITION	10,000 CYCLES
MECHANICAL LIFE, 2 POSITION	100,000 CYCLES
MECHANICAL LIFE, 3 POSITION	50,000 CYCLES
OPERATING TEMPERATURE	-20°C TO +80°C
STORAGE TEMPERATURE	-45°C TO +95°C



PANEL CUTOUTS
SCALE 2:1

FUNCTION CHART								
PART NUMBER	ALCO P/N	POLE	THROWS	RATING				
1825420-1	TRD13D10WL04	1	2	3A	ON	NONE	ON	
1825420-2	TRD13F10WL04	1	2	3A	(ON)	NONE	ON	
1825420-3	TRD13G10WL04	1	2	3A	(ON)	OFF	(ON)	
					TERMINALS CONNECTED	2-1	-	2-3

NONE: NO MECHANICAL POSITION
OFF: MECHANICAL POSITION WITH NO ELECTRIC CONNECTION
(ON): MOMENTARY ACTION

THIS DRAWING IS A CONTROLLED DOCUMENT.		DIN	BSV	
DIMENSIONS: INCHES		CHK	M. ZITTO	17JUN06
TOLERANCES UNLESS OTHERWISE SPECIFIED:		APP'D	M. ZITTO	17JUN06
0. PLC	± .010	NAME		
1. PLC	± .010	TRD SERIES ROCKER SWITCH, 1 POLE, 3A, WIRE LUG TERMINALS		
2. PLC	± .010	PRODUCT SPEC		
3. PLC	± .010	APPLICATION SPEC		
4. PLC	± .010	SIZE	A1	CAGE CODE
ANGLES	± .010	DRAWING NO	1825420	RESTRICTED TO
MATERIAL	SEE TABLE	WEIGHT		
FINISH		CUSTOMER DRAWING		
		SCALE	4:1	SHEET 1 OF 1
		REV A2		